

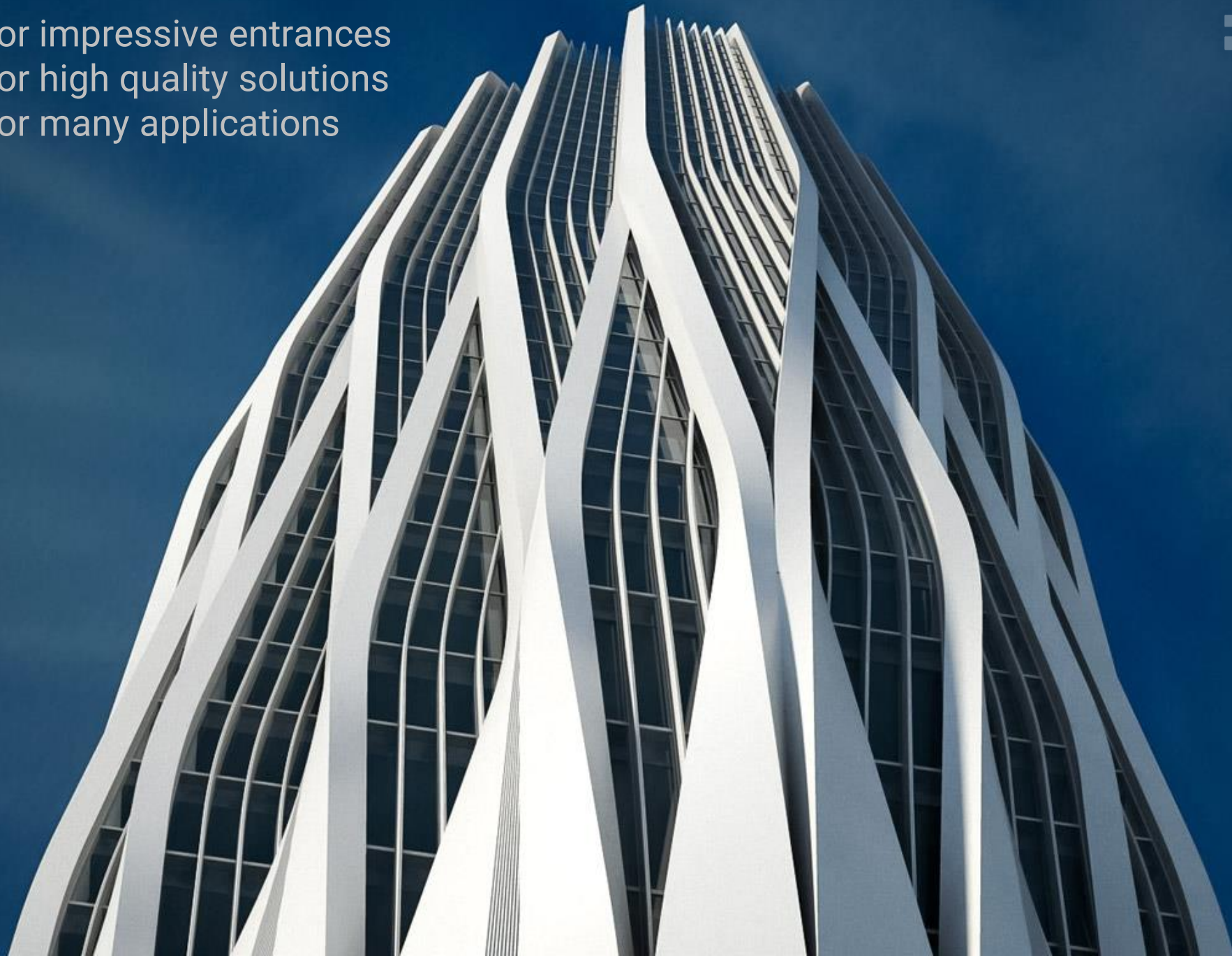


BW BLUE WEST
GmbH

2022

OFFICE SOLUTIONS
JOURNAL

For impressive entrances
For high quality solutions
For many applications



ENTRANCE SYSTEMS

6

BW-S21	8
BW-S20	10
BW-ES200	11
BWC-2	13
BWC-3	16
BWC-4	18
BWW-100 / BWW-250	20

DOOR CLOSERS

22

BDD-1-775 BD	23
BDD-2-760 BSQ	25
BDD-D92	26
BDD-DS915	28
BDD-DS96	31

HINGES

33

BDH-2.05.064	34
BDH-2.05.063.B	36
BGH-5.845E 10/20	38

GLASS FITTINGS

40

BW Double-action	42
BW ROUND	44
BW BEY	46
BW TP/TA	50
BW BG	52
BW EA	53
BW NET	55
Wall connecting profiles	57
BW BR 22/28	58
BGF-DMUN	59
BGF-DUNI	61
BGL-DRON	63
BGL-DGAL	65
BGF-DRP	67

ELECTRONIC CYLINDERS

68

BW - Mechatronic cylinder	69
BW digital cylinder	70

LEVER HANDLES

69

BDL-1.00.310	73
BDL-1.00.177	74
BDL-1.00.412	75
BDL-1.00.418	76

PULL HANDLES

77

BDP-4.07.286.A	78
BDP-4.07.205.A	80
BDP-4.07.204.A	81
BDP-4.07.201.V	82

MASTER KEY SYSTEMS

83

WALLS & PARTITIONS

92

BW-SPACE-R	90
BW-FIREBLOCK-R	91
BW-G20+BW-DS	93
BW-G20+BW-D1S	96
BW-G80+BW-DS	101
BW-G80+BW-D1-80	105
BW-G80+BW-DW	109
BW-G70-BW-DS	111
BW-G70 + BW-D1-70	115
BW-G70 + BW-DBS	117
BW-G70 + BW-D2-70	119
BW-G70 + BW-D2-70S	122
BW-M50 + BW-MP	125
BW-TECHNICAL-PANEL	128

WALLS & PARTITIONS

92

BLBW ACOUSTIC	135
BW THERM	137
VERTICAL WALL SYSTEM	140
BW SAFE	141

FIRE RATED DOORS

145

PANIC BARS

149

BDE-3.20.951.K1	150
BDE-3.20.952.K2	152
BDE-1.20.957	153
BDE-F1.20.945	155
BDE-1.20.954.KIT	157
BDE-D2500	158

ACCESS CONTROL DEVICES

160

BW-OP-VID-PRO-RDR	162
BW-OP-VID-PRO-INT	164
BW-OP-R2-STND	166
BW-OP-R2-MULL	167

PHYSICAL ACCESS SOLUTIONS

168

BW-ONYX-S	169
BW-ONYX-M	170
BW-CENTURION-M	171
BW-BASTION – M	174
BW-SKULL – M	175
BW-GALAXY-M	177
BW-GATE-TS	178
BW-GATE-GS	180
BW-SLIDE	182
BW-JETPAN	183
BW-Arg 40-60-80	185
BW-Arg HSB	189
BW-SWEEPER S	192
BW-SWEEPER-HG	193
BW-SPEEDBLADE	195
BW- SWEEPER-AL	196

BW-AB30	198
BW-AB50	199
BW-AB40	200
BW CITY-LIGHT	202
BW-AC30	203
BW SPEEDBUMPS	205
BW-AS30	206
BOOM BARRIER	207



BLUE WEST is an exceptional German company, specialized in commercial security and access solutions. We develop, produce, assemble, and market a complete range of sophisticated top end products, oriented towards openings. We are committed to the highest standards of quality and reliability in offering architectural solutions.

We continuously developing our extensive product range and services in conjunction with our reputable international production partners to ensure our customers benefit from the very latest global innovations. Our main objective is offering the ideal entrance solutions or security for all market segments like residential, commercial and institutional complexes .

We additionally customize solutions for customer needs in addition to our standard range of products. Through our architectural consultancy and specification services we support our partners to receive the best applicable product with commercial value in mind.



ENTRANCE SYSTEMS





BW-S21

Highly efficient and attractively designed automatic sliding doors product line BWS for exterior and interior.

Door Functions

- The doors can be left completely open
- The doors can be left completely closed
- Cancellation of one of the inner or outer radars
- Keeping the door 70 % open (winter position)
- Position Switch (Manual / Auto, single / double, on / off, full / half opening)

Activators

- Remote control (Standard)
- Safety Sensor (Standard)
- Active or passive microwave sensors (Standard)
- Fingerprint control (optional)
- Coded keypad and proximity (optional)

Optional Requests

- All anodized colors
- Stainless steel profiles and coating
- Different optional glass and color alternatives

Details

Door parameters

Single-panel sliding door	– Clear passage width LW	800 – 3000 mm
	– Door panel weight, max.	1 x 150 kg

Double-panel sliding door	– Clear passage width LW	800 – 3000 mm
	– Door panel weight, max.	2 x 120 kg

Clear passage height*	2100 – 3200 mm
-----------------------	----------------

Technical data of operator

Motor Type	Brushless Dc motor
Height	8 - 12 cm
Installation depth	15 cm
Opening speed (incremental setting)	15 - 65 cm / s (single wing) 15 - 55 cm / s (double wing)
Closing speed (incremental setting)	10 - 45 cm / s (single wing) 10 - 43 cm / s (double wing)
Supply voltage, frequency	AC 80 V - 250 V (50 / 60 Hz)
Power consumption	70W
Class of protection	IP 54
Compliant with EU - Low Voltage Directive and EMC Directive	YES
Manufactured to ISO 9001	YES
Reliable activation and protection in automatic doors, with EN 16005 standard	YES





BW-S20

Product line BWS and its modern drive integrate into every building and meet the needs of even the most demanding users. Stylish, efficient and easy to use.

Door Functions

- The doors can be left completely open
- The doors can be left completely closed
- Cancellation of one of the inner or outer radars
- Keeping the door 70 % open (winter position)
- Position Switch with Digital LCD Display (Manual / Auto, single / double, on / off, full / half opening)
- SHOWING ERROR CODES

Activators

- Remote control (Standard)
- Safety Sensor (Standard)
- Active or passive microwave sensors (Standard)
- Fingerprint control (optional)
- Coded keypad and proximity (optional)

Optional Requests

- All anodized colors
- Stainless steel profiles and coating
- Different optional glass and color alternatives

Details

Door parameters

Single-panel sliding door	<ul style="list-style-type: none"> – Clear passage width LW – Door panel weight, max. 	800 – 3000 mm 1 x 150 kg
Double-panel sliding door	<ul style="list-style-type: none"> – Clear passage width LW – Door panel weight, max. 	800 – 3000 mm 2 x 120 kg
Clear passage height*		2100 – 3200 mm

Technical data of operator

Motor Type	German 63X55 Dunker Brushed DC Motor
Height	8 - 12 cm
Installation depth	15 cm
Opening speed (incremental setting)	3350 Rpm
Supply voltage, frequency	AC 230V (50Hz) ± 5%
Power consumption	100 W
Class of protection	IP 54
Admissible temperature	-15 ° C to + 50 ° C
Digital LCD Display for error codes	YES
Compliant with EU Low Voltage Directive and EMC Directive	YES
Manufactured to ISO 9001	YES
Reliable activation and protection in automatic doors, with EN 16005 standard	YES



BW-ES200

The new, innovative BWS-ES200 SLIDING DOOR OPERATOR system offers the perfect solution for all applications and service requirements.

Door Functions

- The doors can be left completely open
- The doors can be left completely closed
- Cancellation of one of the inner or outer radars
- Keeping the door 70 % open (winter position)
- Position Switch with Digital LCD Display (Manual / Auto, single / double, on / off, full / half opening)
- SHOWING ERROR CODES

Activators

- Remote control (Standard)
- Safety Sensor (Standard)
- Active or passive microwave sensors (Standard)
- Fingerprint control (optional)
- Coded keypad and proximity (optional)

Optional Requests

- All anodized colors
- Stainless steel profiles and coating
- Different optional glass and color alternatives

Details

Door parameters

Single-panel sliding door	– Clear passage width LW	700 – 3000 mm
	– Door panel weight, max.	1 x 200 kg

Double-panel sliding door	– Clear passage width LW	800 – 3000 mm
	– Door panel weight, max.	2 x 160 kg

Clear passage height*	2100 – 3200 mm
-----------------------	----------------

Technical data of operator

Height	100 and 150 mm
--------	----------------

Installation depth	180 mm
--------------------	--------

Opening speed (incremental setting)	10 – 70 cm/s
-------------------------------------	--------------

Closing speed (incremental setting)	10 – 50 cm/s
-------------------------------------	--------------

Hold-open time	0 – 180 s
----------------	-----------

Supply voltage, frequency	230 V, 50/60 Hz
---------------------------	-----------------

Power consumption	250 W
-------------------	-------

Class of protection	IP 20
---------------------	-------

Compliant with EU Low Voltage Directive and EMC Directive	YES
---	-----

Manufactured to ISO 9001	YES
--------------------------	-----

Environmental product declaration in accordance with ISO 14025	YES
--	-----



BWC-2



The bwc-2 two-wing revolving door offers plenty of scope for architectural creativity while also raising accessibility and convenience to a new level. Thanks to the variability of its design and a broad selection of surface finishes, it will turn the entrance of any building into a prestigious entrée.

- Spacious entrance
- Suitable for the needs of the disabled
- Integrated automatic ST FLEX sliding door
- Integrated night shield
- Optional showcases provide advertising space
- Suitable for application as escape route door
- EN 16005 safety standard

Details

Door parameters

Internal diameter(ID):	3600-5400
Passage height (PH):	2100 – 3000
Canopy height:	300 – 700
Total Height:	Clear passage height + canopy height

Traffic capacity

Internal diameter (D) (in mm)	Theoretical capacity person/hour <— —>
3600	1400
4200	2000
4800	2500
5400	2900



3W

1

2

3

4

5

6

4-17

10

9

IDBank

#waitingzone



BWC-3

The STANDARD revolving door systems are perfectly suitable for installation in entrance areas where interior environment control coupled with elegant aesthetics are desired.



Benefits for the installer/fabricator

Flexible system to suit all requirements
Easy installation and rapid commissioning
Guaranteed state-of-the-art design and compliance with all regulations

Benefits for the architect/specifier

Extensive design flexibility in terms of planning and technical requirements
Visually, technically and economically the ideal solution.

Benefits for the user

Enhanced working conditions
Optimization of the building energy balance
Efficient noise protection

Features

- Three- or four-wing design
- Manual operation, positioning, Servo Matic or automatic drive system
- Flexible options (night shields, air curtain, locks etc.)
- Available with Direct drive system
- EN 16005 type approval and certification

Details

Door parameters

Internal diameter(ID):	2000-3800
Clear passage height	LH = 2,100 to max. 4,000 mm
Canopy height:	CH ≥ 100 to max. 1,000 mm

Traffic capacity

Internal diameter (D) (in mm)	Maximum capacity persons/minute → 3 wings
2000	22
2200	20
2400	18
2600	34
2800	31
3000	29

Traffic capacity

Internal diameter (D) (in mm)	Maximum capacity persons/minute → 3 wings
3200	41
3400	38
3600	36
3800	46



BWC-4

The BWC 4 is the perfect solution for high user convenience. Aside from a range of dimensions, the BWC series also offers numerous application-aligned versions to suit individual requirements.



Features

- Superb user convenience
- Optimum cost efficiency
- Flexible options (showcase, night shields etc.)
- Trouble-free installation and commissioning
- Problem-free adaptability to individual requirements
- Optimization of building energy balance

For sophisticated and prestigious entrances

Wherever central entrances of buildings have to handle heavy traffic volumes, where ease of use is paramount and where architecturally refined façades require an equally attractive complement, the BWC-Comfortline range of revolving doors provides the perfect answer.

BWC system components for extensive design flexibility

Thanks to the broad range of optional fittings, materials, surface finishes and glazing designs, these systems can be ideally adapted to meet aesthetic demands.

Problem-free adaptability to individual requirements

BWC Comfortline revolving doors also satisfy the most stringent requirements with respect to reliability, user-friendliness and convenience. Different models offer attractive additional benefits, including options for use as advertisement space.

Details

Door parameters

Internal diameter(ID):	3600, 4200, 4800, 5400, 6200
Clear passage height	2200 - 2500 mm (up to Ø 4800 mm) 2200 mm (from Ø 5400 mm)
Canopy height:	420 – 700

Traffic capacity

Internal diameter (D) (in mm)	Maximum capacity persons/minute →
3600	43
4200	55
4800	64
5400	72
6200	86





BWW-100 / BWW-250

The ED 100/250LE is an elegant electromechanical swing door operator ideal for room access and assistance on demand for various fields of application. The 'Wind Load Control' function is ideal for windy sites compensating for heavy wind loads. Suitable for emergency escape routes as well as use **on fire and smoke check doors**.

Benefits

- Flexible configuration: Customers only pay for the functions they actually require
- Inexpensive transportation and easy mounting thanks to the system's reduced weight
- Low-noise unit thanks to multi-stage gear
- Elegant visual appearance: BLUE WEST Contour design provides for an operator height of only 70 mm
- Various functions included as standard
- Field of application.
- For single- or double-leaf swing doors
- The pull version with slide channel and the push version with standard arm are both suitable for use on fire and smoke doors
- Thanks to its low- and full-energy versions, the system is suitable for automating both rarely and heavily frequented internal and external doors

- High torque for fully automatic swing doors with radar motion detector actuation

Features

Modular design and variable functional range
Automatic operation with "Wind Load Control"
Suitable for use on emergency escape and fire doors

Tested to 1,000,000 cycles

ED 100 - Door weights up to 160kg, door widths up to 1100mm

ED 250 - Door weights up to 400kg, door widths up to 1600mm

New: with integrated smoke detector

For single- and double-leaf swing doors

Details

Module

Operator

A compact and powerful unit.

Choose one of the following operator systems according to your individual door-leaf parameters:

BWW-100

EN 2-4 for door widths of 700 – 1,100 mm and a maximum door weight of 100 kg.

ED 250

EN 4-6 for door widths of 700 – 1,600 mm and a maximum door weight of 250 kg

BRC radio system

Easily operable via pushbutton.

BRC-R receiver

The receiver can easily be integrated in the standard operator.

BRC-H

hand-held transmitter Bi-directional system in new design.

BRC-W wireless wall transmitter (pushbutton-type)

Extra slim design, suitable for surface mounting.

BRC-T transmitter

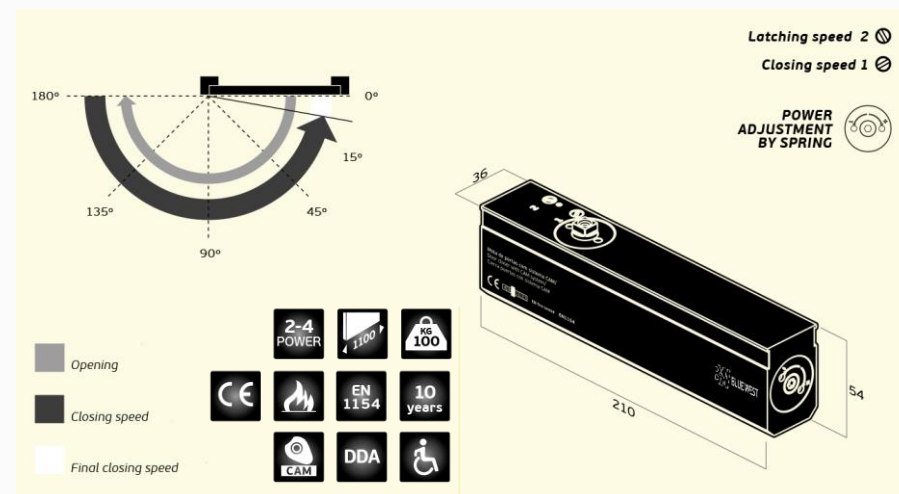
Easy installation in commercial pushbuttons



DOOR CLOSERS



CAM ACTION DOOR CLOSER : BDD-1-775 BD



Details

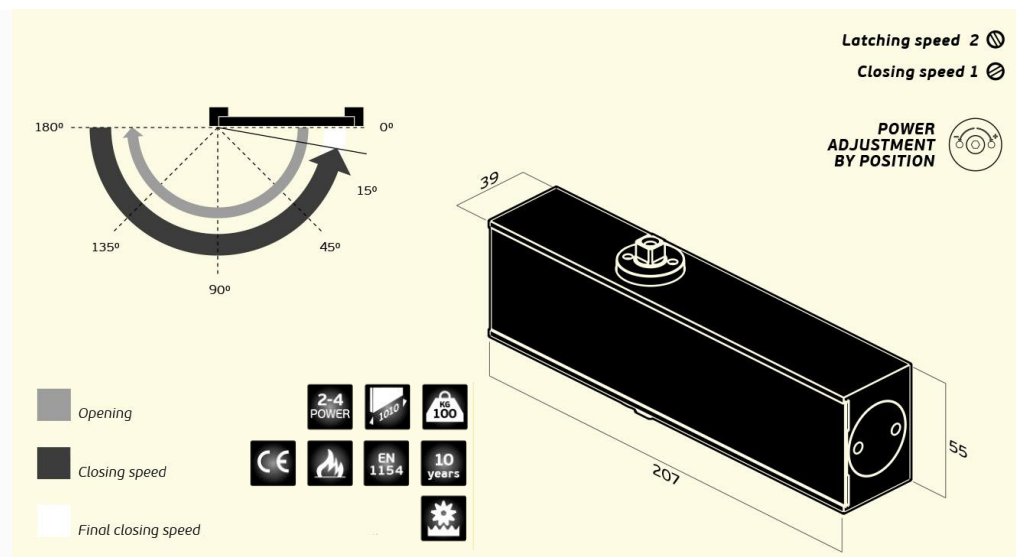
Door closer type	Hydraulic overhead door closer
Arm type	Sliding Arm
Adjustable Power	2 - 4
Maximum door width	1100 mm
Maximum door weight	100 Kg
Power adjustment	by spring
Mechanism	CAM action

Details

closing speed adjustable	by valve
Latching speed adjustable	by valve
Opening angle	180 °
Reversible door closer	YES
Certified Fire proof	YES
CE marking	YES



CAM ACTION DOOR CLOSER : BDD-2-760 BSQ



Details

Door closer type	Hydraulic overhead door closer
Arm type	Standard arm without retaining
Adjustable Power	2 - 4
Maximum door width	1100 mm
Maximum door weight	80 Kg
Power adjustment	by position
Mechanism	Rack and Pinion

Details

closing speed adjustable	by valve
Latching speed adjustable	by valve
Opening angle	180 °
Reversible door closer	YES
Certified Fire proof	YES
CE marking	YES

BDD-D92



Designed especially for BGF-DUNI interior applications, the BDD-D92 door closers in Contur design offer excellent ease of use due to their linear drive mechanism with the heart-shaped cam.

The Contur design ensures a uniform appearance in the complete building.

- Certified manufacture to ISO 9001.
- Especially for interior applications
- Door widths up to 950 mm (BDD-D91) / 1100 mm (BDD-D92)
- For single- and double-leaf doors
- Easy installation
- Quickly adjustable

Features

Benefits for the trade/distributor

- Inexpensive cam-action technology for standard interior doors
- Low storage costs and reduced inventory requirement thanks to uniform slide channels of the Contur series

Benefits for the installer/fabricator

- Non-handed
- Easy to fix and quickly adjustable

Benefits for the architect/specifier

- Excellent value for money
- Uniform appearance throughout the entire Contur slide channel range

Benefits for the user

- Exceptional ease of use and fully controlled closing action
- Optimum adaptability of the closing speed with reliable latching thanks to two regulating valves

Data and features

Closing force Adjustable	Size	EN 1–4
Standard doors	≤ 950 mm ≤ 1100 mm	– •
External doors, outward opening		–
For fire and smoke check doors		•
Non-handed design		•
Arm assembly type	Slide channel	•
Closing speed and latching action independently adjustable at two separate valves	180°–15° 15°– 0°	

• yes – no ○ optional

Data and features

Cushioned limit stay, mechanical		○
Hold-open		○
Dimensions in mm	Length Overall depth Height	281 47 65
Door closer tested to EN 1154		•
CE mark for building products		•



BDD-DS915



BDD-DS915 Cam-action door closer is designed and manufactured to high quality standards to meet the growing demand for an economical solution of high performance concealed overhead door closer with standard features.

- BLUE WEST Easy Open technology
- Optional hold-open
- Identical mounting position for both size 3 and 4
- Easy adjustment of two closing speeds
- Fire tested in accordance to EN1154

Features

Benefits for the architect / specifier

- Innovative engineering and design by BLUE WEST
- Compliance with statutory requirements for barrier-free building (UL listed, tested to EN1154)
- Unblemished appearance of prestige doors – concealed installation

Benefits for the trade / distributor

- Hassle-free ordering and inventory management – closer body (non-handed) and slide-channel arm assembly in one box for ease of handling

Benefits for the installer / fabricator

- Ease of installation - compact concealed cam-action (non-handed system) door closer with identical mounting position for both size 3 and 4
- Easy adjustment of the two closing speeds separately

Benefits for the user

- Barrier-free with BLUE WEST Easy Open technology - Easy access for all users and for children, seniors and the physically-disabled
- Convenience and Comfort - optional hold-open device and cushioned limit stay
- Enhanced protection against vandalism - concealed installation

Features		EN 3	EN 4
Standard doors	up to 950 mm	•	–
	up to 1100 mm	–	•
Fire and smoke check doors	up to 950 mm	•	–
	up to 1100 mm	–	•
Door leaf thickness		≥45 mm	≥45 mm
Max. door leaf weight in kg		60	80
Max. door opening angle		115°	115°
Dimensions in mm	Length	267	267
	Body Length	230	230
	Width	36	36
	Height	57	57
Non-handed design		•	•
Door Closer certified to EN 1154		•	•
C UL US listed		•	•
CE mark for building products		•	•

• yes – no ○ optional





BDD-DS96



The BDD-DS96 series offers the optimum solution for applications requiring concealed door controls. It is suited for virtually any door and frame combination in a variety of leaf thicknesses and configurations.

- Rapid decrease in opening force makes doors easy to open
- Efficient cam and roller design
- Non-handed
- Adjustable spring force size

Features

Cam and roller technology

The BDD-DS96 door closer's unique cam and roller technology meets the challenge of providing the operation and features necessary in a compact design.

Door applications

The BDD-DS96 Series is suitable for interior wood, hollow metal, and aluminum doors and frames. All BDD-DS96 models can be inverted to install the closer body in the frame. Maximum door opening is approximately 130°.

Certification

The BLUEWEST BDD-DS96 are listed by UL and CUL under their continuing reinspection programs. Meets the requirements for UL 10C for positive pressure. California State Fire Marshal (CSFM) approved. Meets the requirements of ANSI/BHMA A117.1 and ADA for barrier-free accessibility.

Data and features			
Variable closing force	Spring strength	EN 2–4	EN 3–6
Standard doors	up to 1100 mm up to 1400 mm	• –	• •
For fire and smoke check doors	up to 1100 mm up to 1400 mm	• –	• •
Door leaf thickness	from 40 mm	•	•
Non-fire doors	from 50 mm	•	–
Max. door leaf weight in kg		130	180
Max. door opening angle (depends on door design)	approx. 120°		
Weight in kg		1.3	2.5
Dimensions in mm	Length	277	291
	Width	32	39.5
	Height	42	51
CE mark for building products		•	•

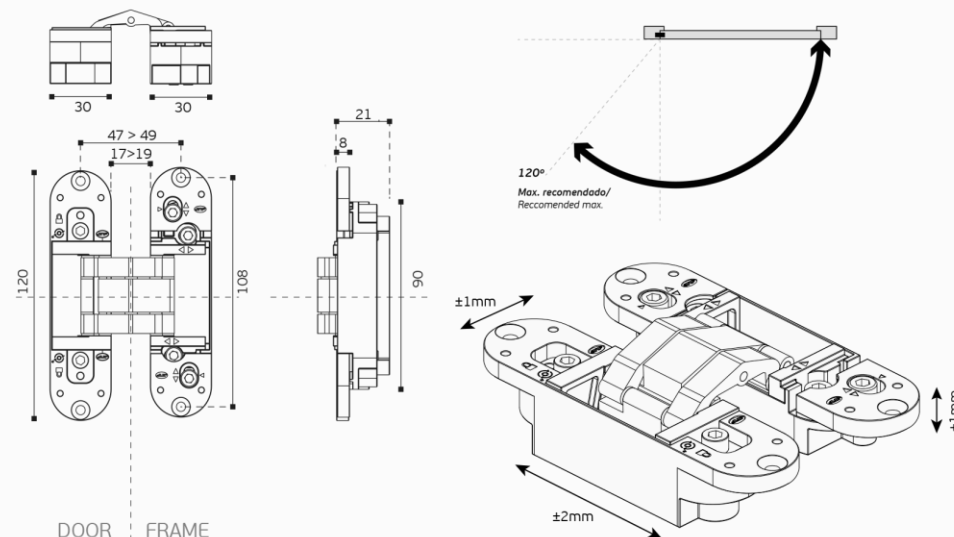
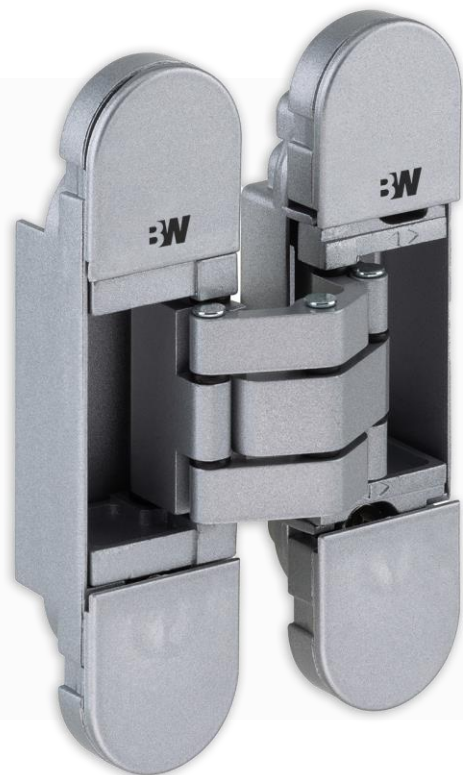


HINGES



BDH-2.05.064

Invisible hinge with 3D adjustment.



Finishes



3x
60
Kg

200.000 CYCLES

2x
50
Kg

200.000 CYCLES

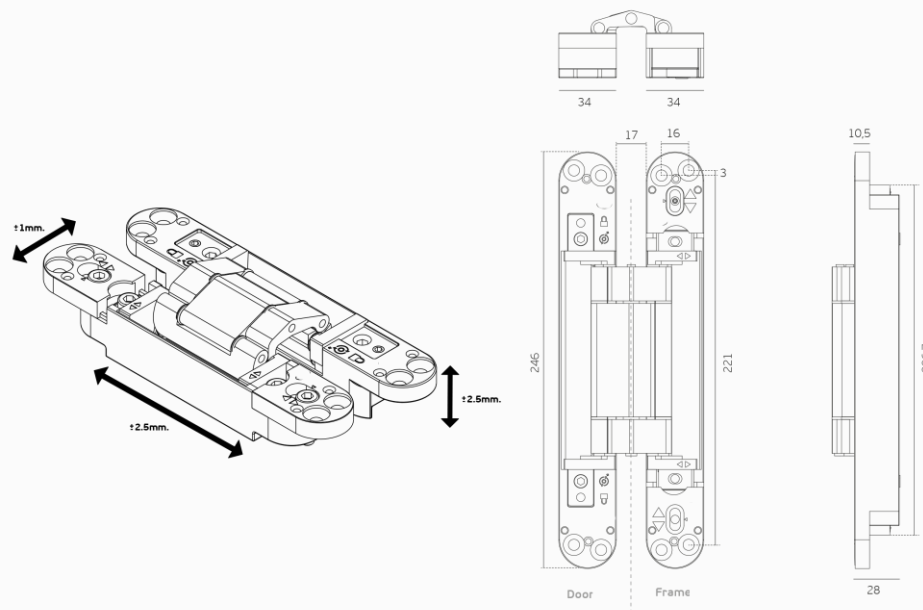


BDH-2.05.063.B

Invisible hinge with 3D adjustment.



Black Edition





BGH-5.845E 10**BGH-5.845E 20****Hidden door closer hinges**

The new hidden oildynamic doorcloser hinge, for framed doors with a stop. Upon customer request. This type is completely hidden into the profile, and adapted to every project.



BGH-5.845E 20
Upper hinge

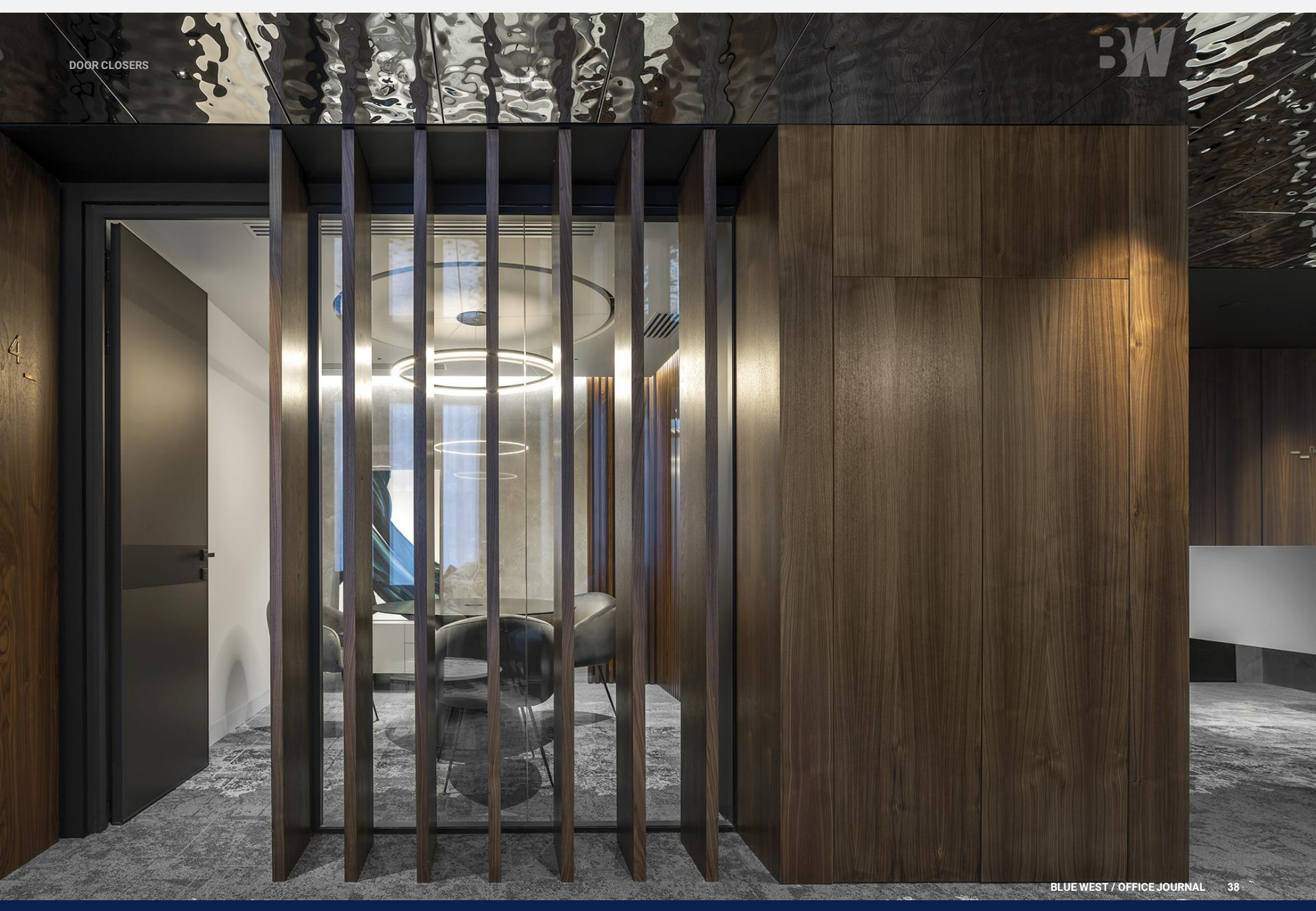
**Features:**

- Hydraulic Closing;
- Invisible – hidden into the profile;
- Customizable, in order to satisfy every specific project;
- Adjustability of the closing speed;
- Height regulation +/- 3 mm;
- 90° Stop
- Minimum dimensions 25x25 mm.

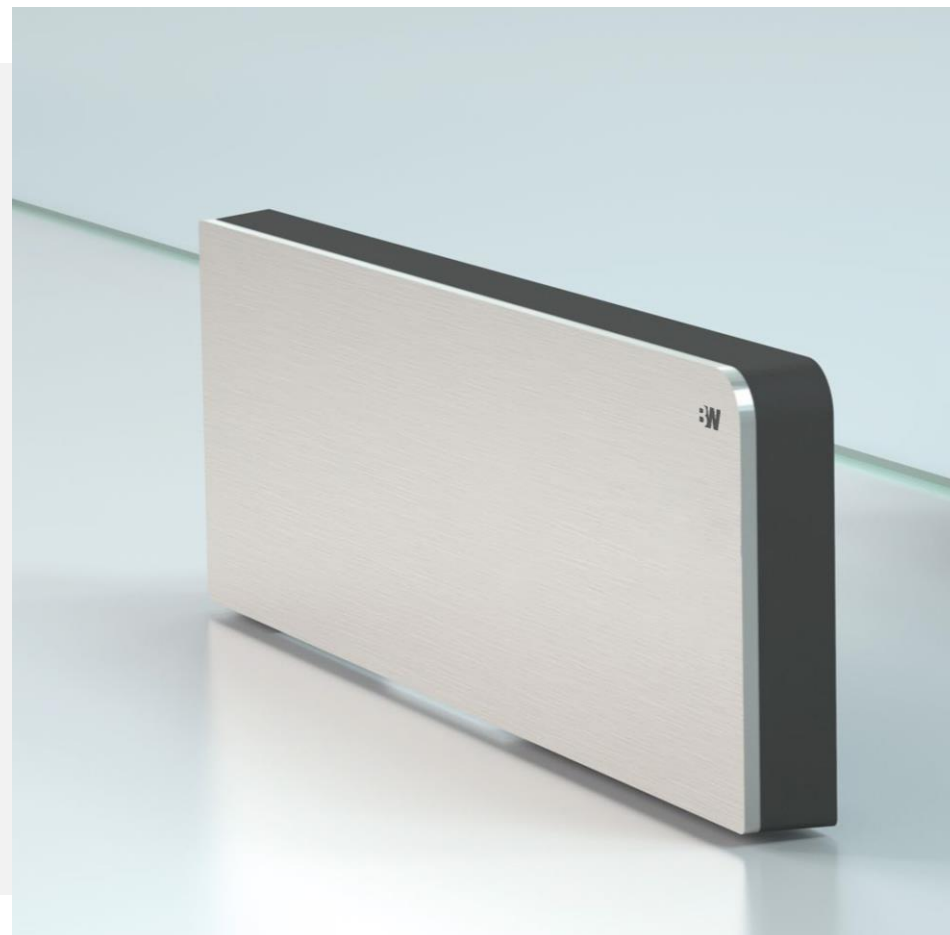
The installation of the upper hinge is completed by the dedicated hidden lower hinge.



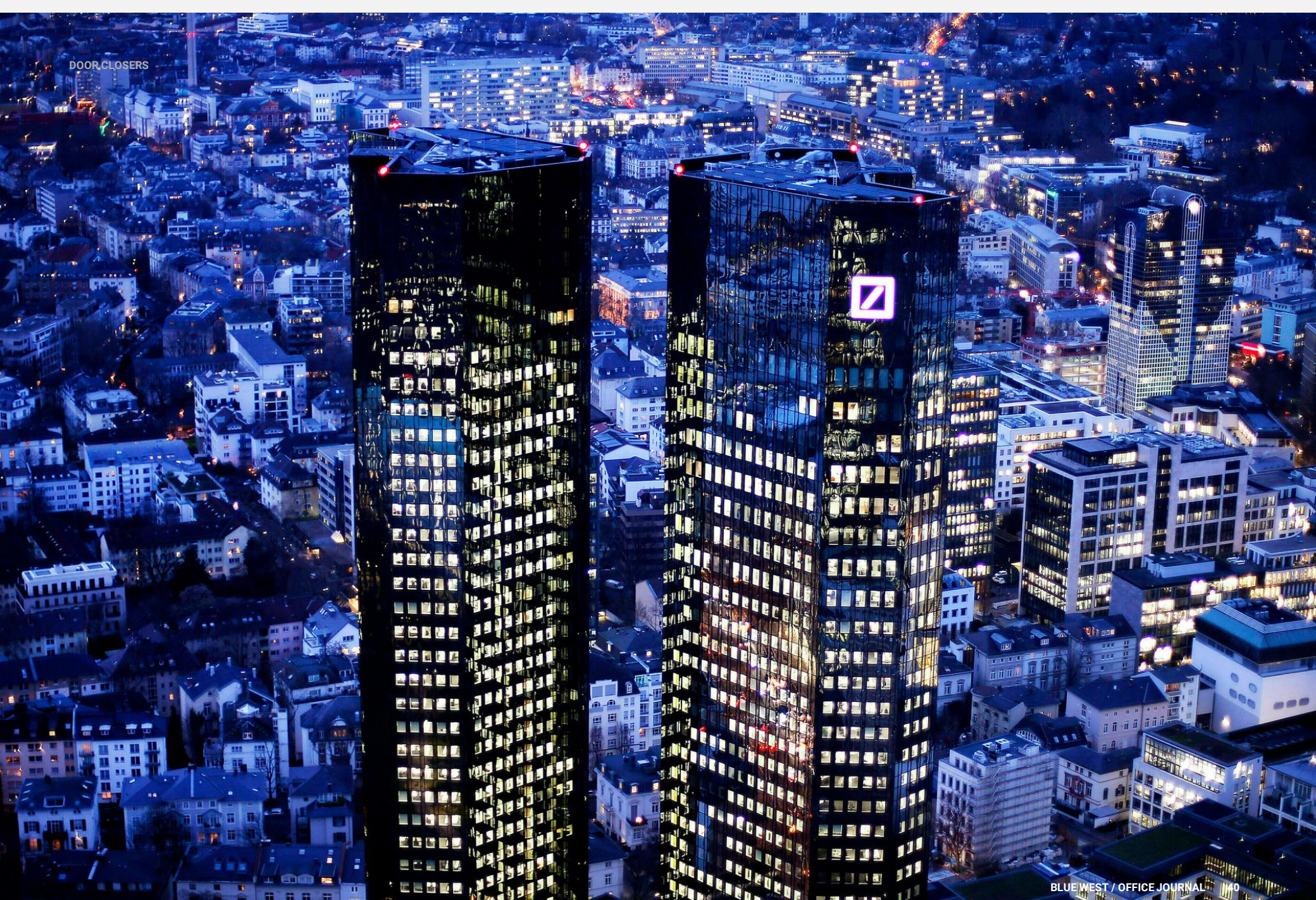
BGH-5.845E 10
Bottom hinge



GLASS DOOR FITTINGS AND ACCESSORIES



DOORCLOSERS



BW Double-action Door Hinge



The BW double-action door hinge offers particular convenience. And all the more so where the door is returned to the desired closed position by the action of the hinges alone – without any need for a recessed floor spring or an overhead door closer.

- Effortless opening and closing of swing doors
- Excellent returns from every angle
- TÜV-tested/third-party verification
- Easy installation

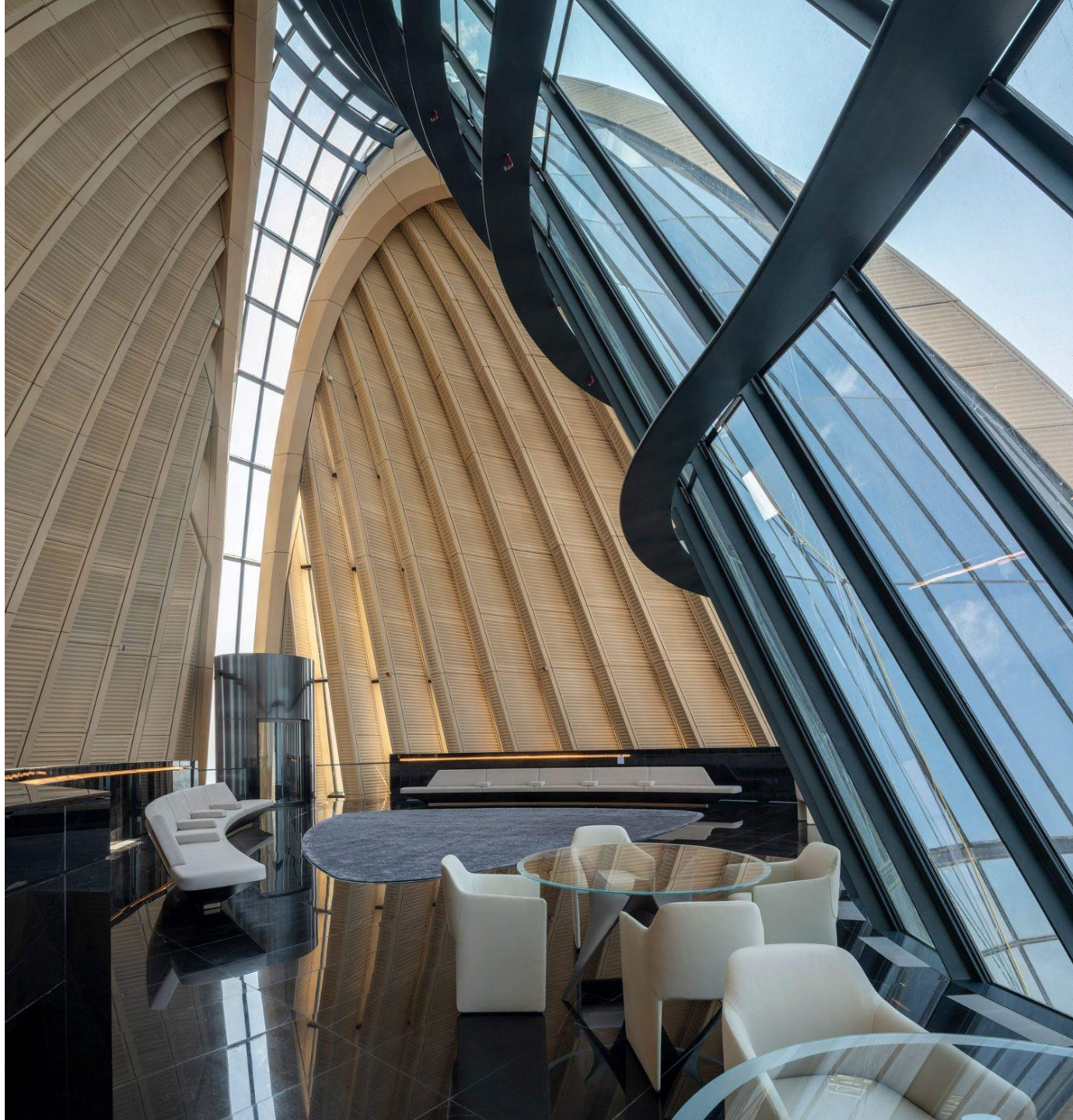


BW ROUND DOUBLE-ACTION GLASS DOOR SYSTEM



The patented ROUND double-action door system keeps glass double-action doors completely clear from visually disruptive functional elements. The fitting components do not appear in the door leaf's clear outlined area; rather, they are stored in the surrounding structures. As a result, the fitting is not the main focus, but rather absolute door transparency. Even smaller rooms become really large – a big win for interior architecture.

- High level of transparency
- Independently choose the room's color and material
- High durability thanks to sophisticated technology
- No need for a door frame



BW BEY Anti-Pinch Swing Door System



BEY, a secure, functional, unique and design-oriented system for swinging glass doors without jamming. The BEY swing door's patented system with its pivot point positioned in the middle of the glass axle ensures safety. BEY opens up numerous opportunities to integrate frameless glass doors in toughened glass assemblies or wall openings. The option to choose between an elegant, continuous rotating rod and the short rod solution makes the technology "acceptable" for any room situation.

- Secure, safe and functional
- Continuous rotating rod does not jam
- Prevents the risk of trapped fingers
- No need for a door frame
- High level of transparency due to low metal fitting size
- Flexible application for many different door situations

RAKBANK
RAK *elite*
 الخدمات المصرفية المميزة
 PREMIUM BANKING

BW BEY Anti-Pinch Swing Door System





BW TP/TA Door Rails



The TP/TA door and side panel rails coordinate with all BLUE WEST patch fittings in terms of design, dimensions and the finishes available.

- For heavy-duty and wide doors
- Special security and quality features
- Easy door adjustment
- Reliability built in
- Short delivery times



BW BG Lock System



It doesn't matter what sort of glass door needs securing, what function it has to fulfill, or the type of fittings specified – there will be a lock in the BLUE WEST BG range that will provide the shape, the function and the finish you require.

- For heavy-duty and wide doors
- Special security and quality features
- Easy door adjustment
- Reliability built in
- Short delivery times

BW EA Patch Fittings



EA patch fittings are characterized by their slim, neat shape and sophisticated hinge design. This comprehensive range of fittings maximizes the transparent elegance of single-action doors – whether hung in frames or integrated in toughened glass assemblies.

- Easy glass preparation, secure fixing
- Suitable for 8, 10 and 12 mm glass thicknesses
- Reliability built in
- Matching range of locks
- Virtually unlimited choice of colors and finishes
- Short delivery times

BW EA Patch Fittings

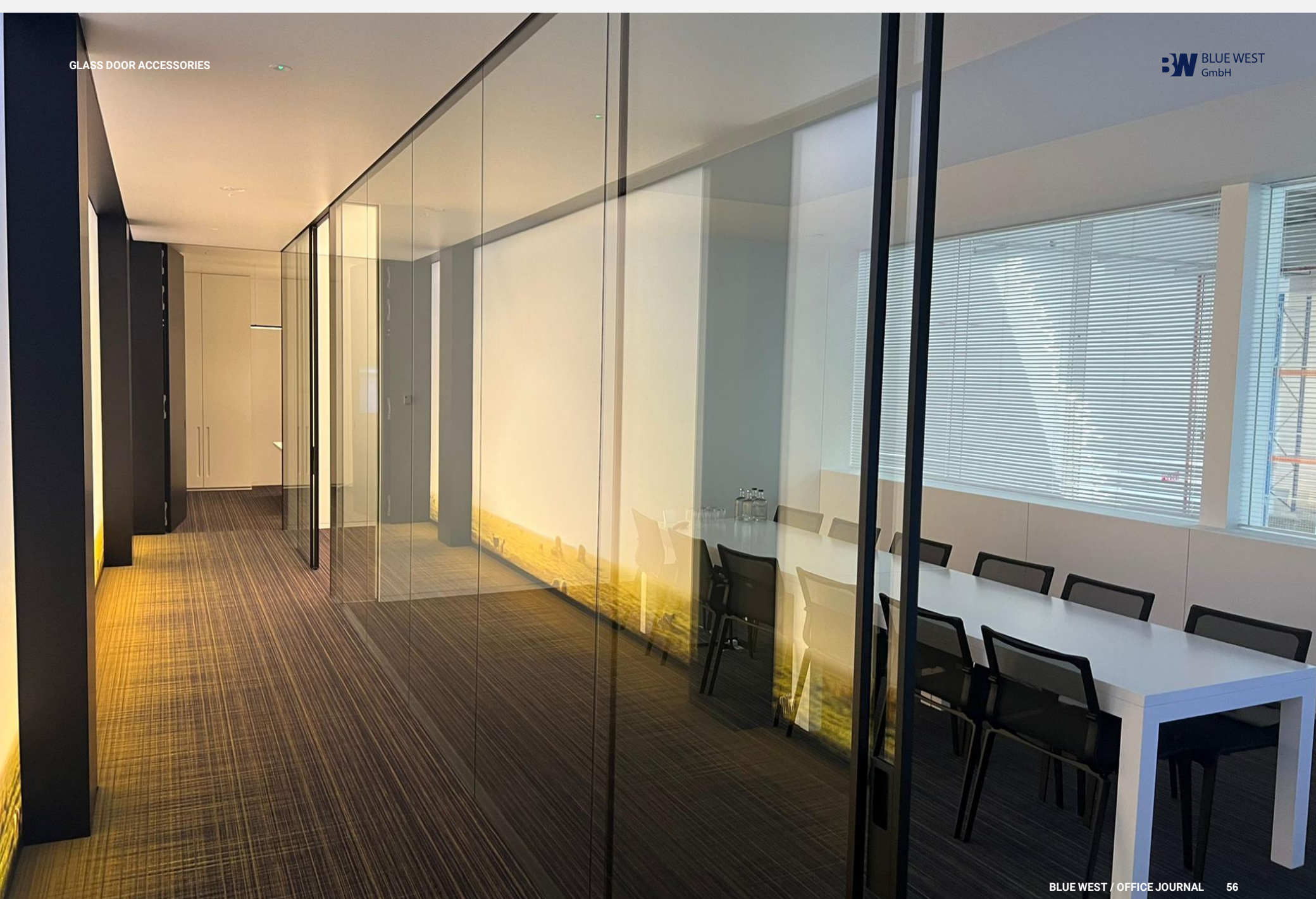


BW NET toughened glass assemblies



NET impresses with its distinctive design: point-fixed in stainless-steel. This elegant solution underscores the spaciousness of transparent architecture and relies on high flexibility. As a result, special formats in very special architecture can also be implemented in addition to doors and conventional toughened-glass systems.

- Great flexibility and wide variety
- No need for a door frame
- Glass elements are easy to install with custom fit
- Uniform stainless-steel design for sliding and revolving doors



BW Wall connecting profiles



The wall connecting profiles seal toughened-glass designs to the wall, ceiling and floor in a clean, elegant manner and ensure secure support for side parts and roof lights. Many different materials such as aluminum, brass, stainless steel and many different surfaces offer a premium and attractive look.

- Designed for toughened safety glass
- Glass thickness 8 - 19 mm
- Door weight: 15 kg per clamp
- Material: Aluminum, brass, stainless steel
- Surface: Anodized and RAL colors, brass, stainless steel
- Easy mounting

BW BR 22/28 Frame System



The BR 22 and BR 28 frame solutions comprise a frame profile (standard-drilled holes), a clamping profile and two contact rubber profiles (PVC, transparent). The frames are suitable for both interior and exterior applications.

- Elegant solutions for interior and exterior applications
- Easy to install
- Straightforward removal and re-installation
- Can be combined with sash bar profiles

BGF-DMUN



- Clear design lines, no visible fixings
- Wide range of surface finishes, colours and materials
- Particularly easy to install: Many BGF-DMUN fittings can be mounted on the glass and fixed into place in their as-delivered condition
- Fast installation, simple in-situ adjustment of the installed system
- set up for the right glass thickness: adaptable to different glass thicknesses without the need to change gaskets
- Improved load-bearing performance and more secure hold thanks to high-strength materials (screws and threaded sleeves of high-grade stainless steel capable of absorbing high clamping forces)
- Use of laminated safety glass (LSG) using BLUE WEST's proven Clamp&Glue technology for high quality and safety demands (BGF-DMUN Premium)

	BGF-DMUN Premium	BGF-DMUN Comfort
Max. load-bearing capacity	200 kg	150 kg
Max. panel width	1,300 mm	1,100 mm
Possible glass thickness	8 – 12 mm 12 – 15 mm 15 – 19 mm 19 – 22 mm	8 – 12 mm
Supported pivot points in mm	55, 65, 70 mm	55, 65, 70 mm
Offset adjustability in mm	Infinite (± 3 mm); 52 – 73 mm	Infinite (± 3 mm); 52 – 73 mm
Adjustability of the door/insert	Multi-dimensional	Multi-dimensional
Cover materials	Stainless steel, aluminum, glass etc	Stainless steel, aluminum

BGF-DMUN

Available finishes



Aluminum white



Aluminum silver



Satin stainless steel



Polished stainless steel



Niro Dark



Brass Antique



Black Bronze

BGF-DUNI



With its broad spectrum of basic types and variants, the BLUE WEST BGF-DUNI range of patch fittings enables the creation of toughened glass constructions of almost any conceivable design. Toughened glass assemblies can be constructed with fixed part components in widely differing arrangements to suit double or single action doors in single leaf or double leaf designs.

- Easy glass preparation, secure fixing
- Suitable for common glass thickness
- Variable pivot point
- Reliability built in
- Matching range of locks
- Short delivery times

BLUE WEST BGF-DUNI fittings

These fittings are supplied as standard with gaskets to suit 10 mm and 12mm glass thickness. However, the fittings can be supplied to suit glass thickness from 8mm -19mm on request.

Suitable for most applications

The inserts for corner and overpanel patches in the BLUE WEST BGF-DUNI range have been designed and manufactured to give two options for the pivot point distance from the sidepanel or frame. It can be either 55 mm or 65 mm.

Easy glass preparation, secure fixing

BLUE WEST has an intimate knowledge of the special properties of glass as a building material. This has led to the design of fittings requiring only minimal glass preparation – a quick and easy cut-out with additional holes. Carefully considered and positive measures have been taken to create the maximum contact surface area for optimum clamping efficiency.

Matching range of locks

The BLUE WEST BGF-DUNI range includes every type of accessory and of course, a variety of locks and strike boxes in a matching design concept, giving the architect or specifier plenty of options to choose from.

Technical data

- Max. door leaf weight, 110 kg
- Max. door leaf width, 1100 cm
- Can be implemented with door rails up to 150 kg and 1400 cm





BGL-DRON



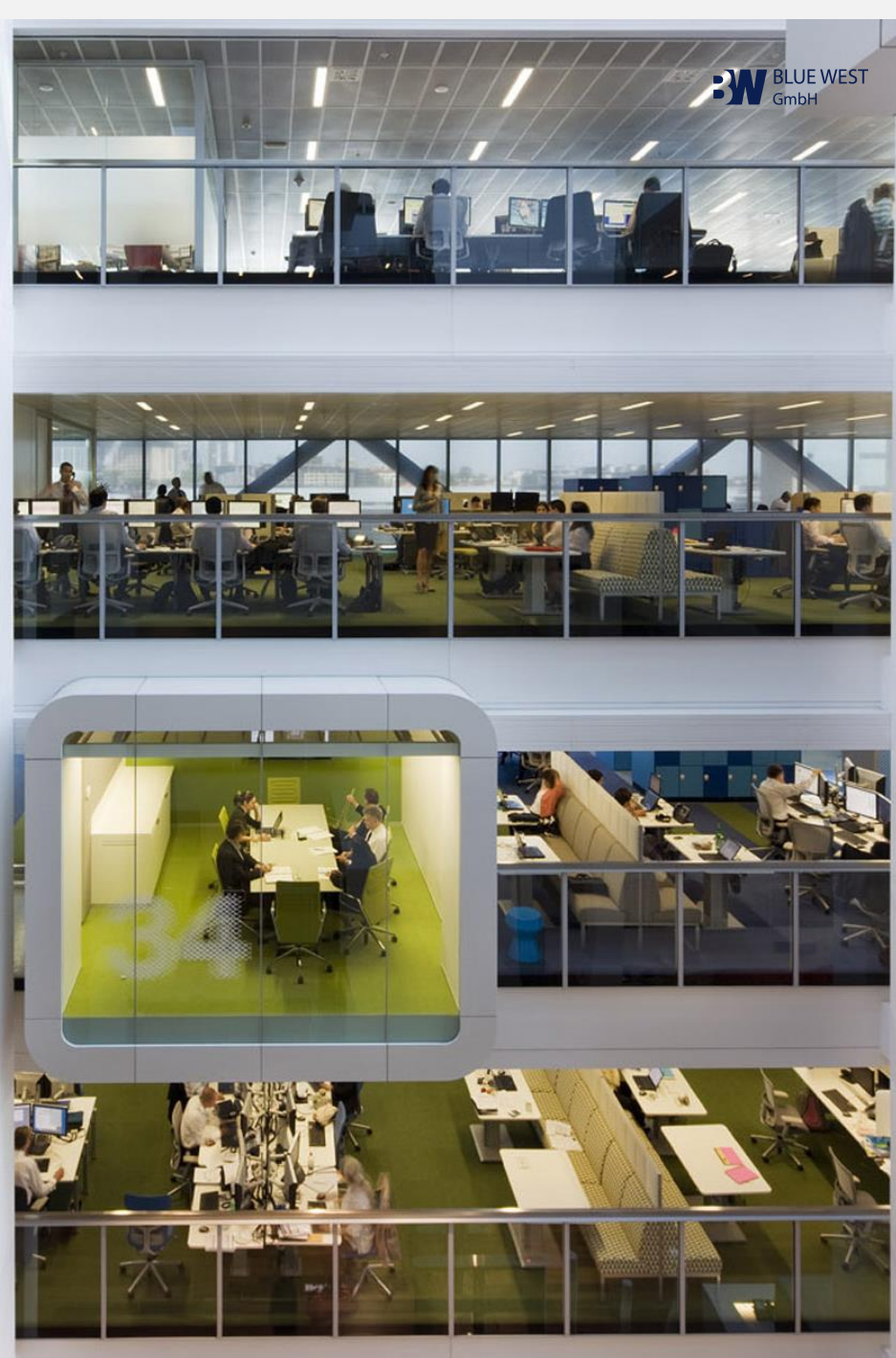
- Lock insert with low-noise “whisper” functionality as standard. The whisper latch (study metal latch
- partially plastics-sheathed and damped latch motions for noise minimisation) satisfy particularly high expectations. Adjustable lever handle follower $+1,5^\circ / -1^\circ$, patent pending, for avoidance of “lever
- handle sag” (droop). Further on a special spring supported clamp follower holds the lever handle perfectly secure.
- The fully closed lock case provides optimum protection for the internal components which themselves are of rugged unit construction.
- Locks comply to the current DIN EN 12209.
- Moreover these locks were tested successfully by a neutral testing institute with 200,000 latch and 200,000 locking bolt operating cycles



BGL-DGAL



- Lock insert with low-noise “whisper” functionality as standard. The whisper latch (study metal latch – partially plastics-sheathed and damped latch motions for noise minimisation) satisfy particularly high expectations. Adjustable lever handle follower +1,5° / -1°, patent pending, for avoidance of “lever handle sag” (droop). Further on a special spring supported clamp follower holds the lever handle perfectly secure.
- The fully closed lock case provides optimum protection for the internal components which themselves are of rugged unit construction.
- Locks comply to the current DIN EN 12209.
- Moreover these locks were tested successfully by a neutral testing institute with 200,000 latch and 200,000 locking bolt operating cycles



BGF-DRP



The popularity of concealed overhead closers has led BLUE WEST to furnish fully fabricated headers for every door and sidelite configuration. The RP Header System, which incorporate RTS overhead concealed door closers, offer the perfect solution for those who prefer the aesthetic advantages of a concealed closer.

- Modular system
- Innovative design and quality material
- RP Header System incorporates concealed overhead door closer
- Special damping system to protect the door against unwanted impact
- Integral hold open function

Features

BLUE WEST RP Patch Fittings with transom closer.

The BLUE WEST RP pivot door system works with a tubular transom profile in which the BLUE WEST RTS transom closer is integrated and concealed.

Attaches the all-glass door to the closer

This BLUE WEST RTS transom closer not only returns the door to the zero position each time it is opened, it also has a special damping system to protect the door against unwanted impact caused by over aggressive opening. In addition, the integral hold open, which also comes as standard, enables the door to be held open at an angle of 90°.

Innovative design and quality material

The popularity of concealed overhead closers has led BLUE WEST to furnish fully fabricated headers for every door and sidelight configuration.

Benefits for the architect/specifier

The perfect solution for those who prefer the aesthetic advantages of a concealed closer

Benefits for the trade/distributor

Applications

For indoor use, e.g.

- Doctor's offices
- Hotel rooms
- Office rooms
- Private residences



ELECTRONIC CYLINDERS



BW - Mechatronic cylinder



BLUE WEST mechatronic cylinders bridge the gap between electronic access control and the world of mechanics. As part of the tried-and-tested **BLUE WEST** evolo portfolio, they can be seamlessly integrated into existing mechanical master key systems. A whole world of new possibilities is now available, thanks to the combination of mechanical cylinders and electronic access control. The key can be programmed very quickly – and programming can be removed just as fast too. Plus, access rights can be controlled in relation to both time and location. The smart key, which is equipped with an RFID chip, opens doors with both mechanical and mechatronic cylinders.

The range includes versions with surface fixed housing and compact cylinder, as well as double, thumbturn and single cylinders, in which the electronic module is built into the door leaf.

BW digital cylinder



These are lifestyle cylinder locks with both visual and acoustic access signals. They are compact, energy efficient and extremely easy to install. The many different versions offer a solution for every door.

Features

- Can be installed in any door made of wood, glass or metal
- Suitable for installation in fire doors
- Increased drill protection for enhanced security
- Award-winning modern design
- Available in black or white
- Modular design - On-site length adjustment possible

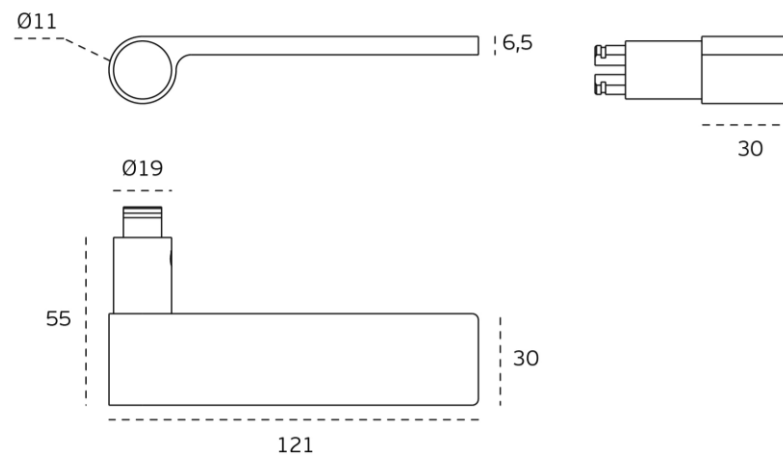


LEVER HANDLES



BDL-1.00.310

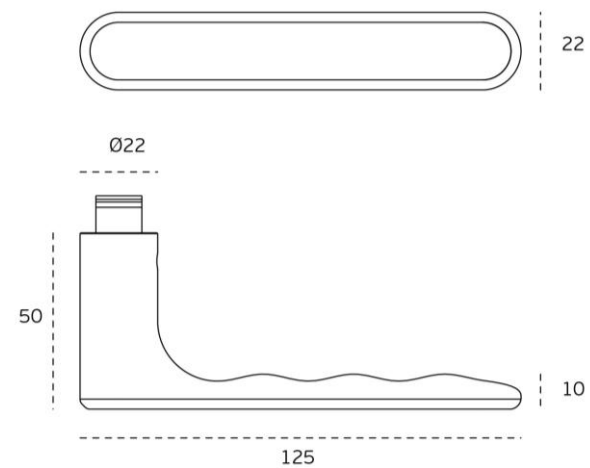
Material: stainless Steel
Finish: Satin

**Available finishes**

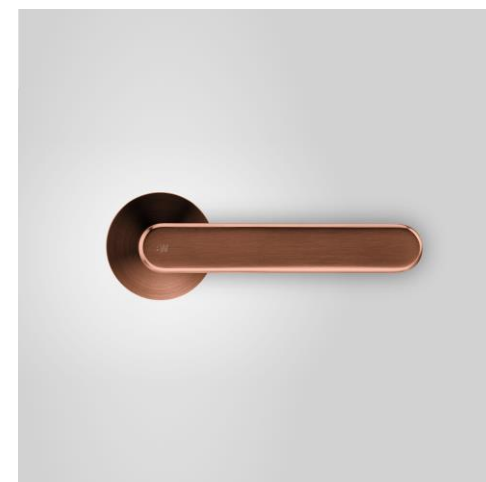
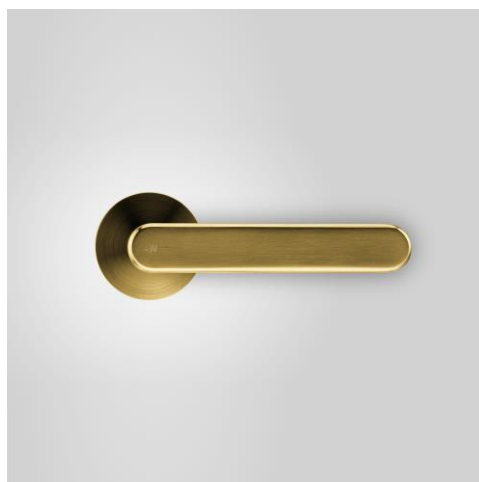
BDL-1.00.177



Material: stainless Steel
Finish: Satin



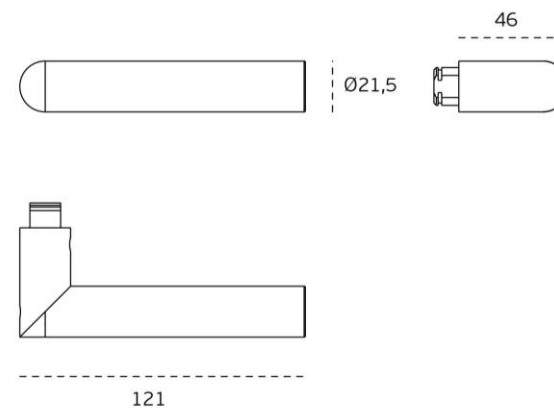
Available finishes



BDL-1.00.412



Material: stainless Steel
Finish: Satin

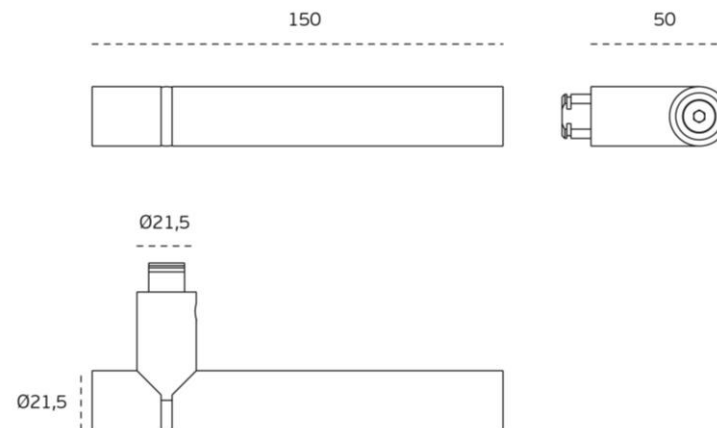


Available finishes



BDL-1.00.418

Material: stainless Steel - WENGÉ
Finish: Satin

**Available finishes**

PULL HANDLES

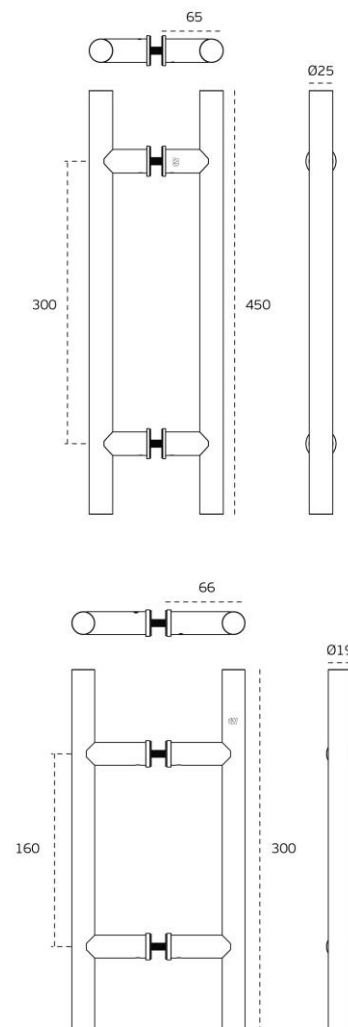


BDP-4.07.286.A

Material: EN 1.4301 / AISI 304

Finish: Satin

Optional: PVD Titanium Coated



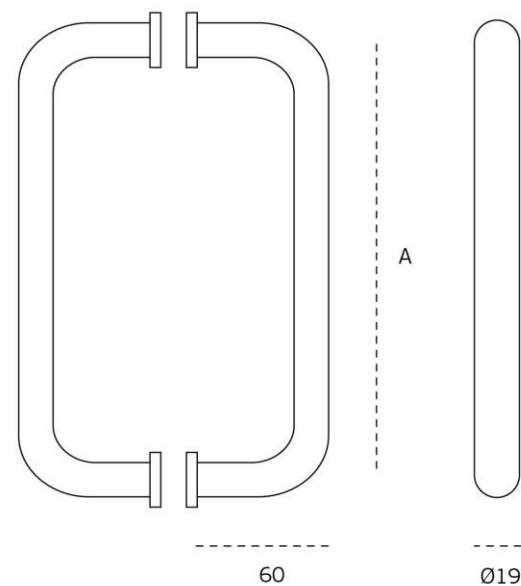


BDP-4.07.205.A

Material: EN 1.4301 / AISI 304

Finish: Satin

Optional: PVD Titanium Coated



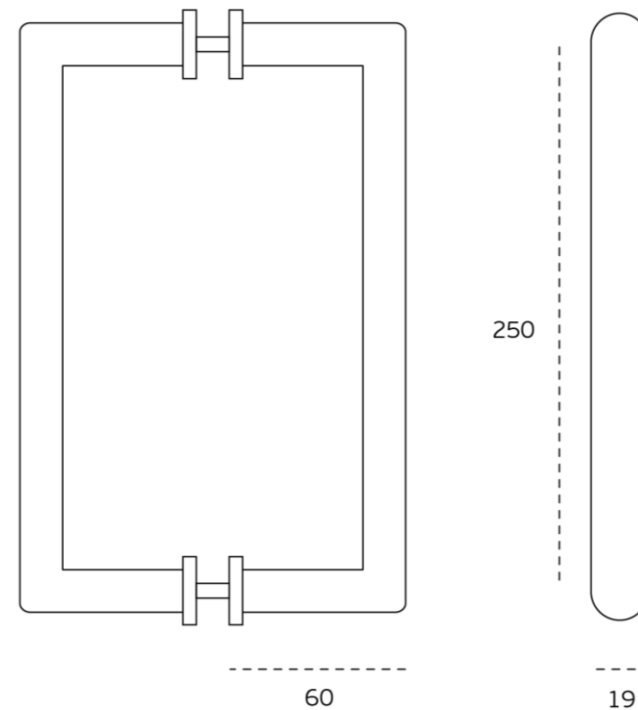
A - 200/250

BDP-4.07.204.A

Material: AISI 304

Finish: Satin

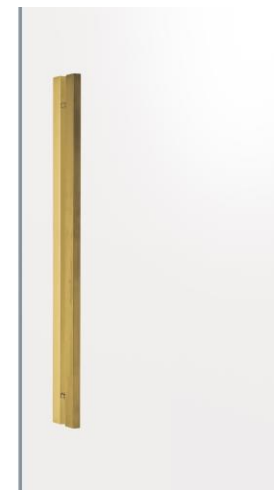
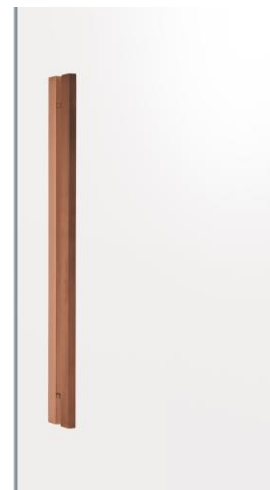
Optional: PVD Titanium Coated



BDP-4.07.201.V

Material: AISI 304

Finish: Satin



MASTER KEY SYSTEMS

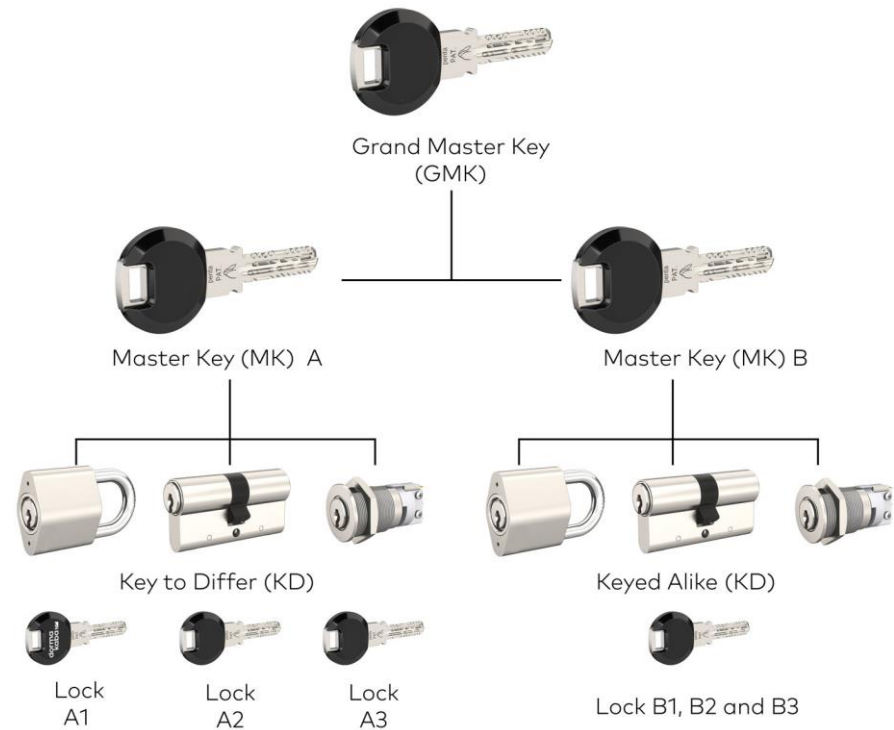


Complete Master Key System Design

A master key system is a key plan whereby selected keys can open a number of pre-defined doors. It helps maintain better control, saves key replacement costs and is convenient, as there are a lower number of keys in circulation. It also provides quick access to all rooms within the premises, e.g. for security staff and management personnel. This is not only convenient but can save lives in case of emergency.

In the front example, the 'Master Key' would open all doors and lock types in the property and is held by the caretaker. The Sub-Master A opens the main entrance and all the locks on the ground floor, and is held by the manager of the company that occupies that floor. The same applies to Sub-Master B.

In addition, each employee has one key that opens the main entrance, their own office door and their filing cabinets. These keys work with different types of lock, e.g. door locks, cabinet locks, padlocks, etc., as long as the cylinder inside them is of the same model.



❖ **MOVABLE & FIXED
PARTITIONS**

❖ **WALL SYSTEMS**













IMAGINEERS OF SPACE(S)

Having a space where people can meet and work (together) is essential to employee wellbeing, health and productivity. However, due to challenging building joints and the variety of project participants, creating these spaces often runs into difficulties and frustration. Installing or moving walls takes considerable time, energy and money. BW-SPACE-R relegates these problems to a thing of the past. Its plug-and-play wall profiles are easy to install or relocate, and leave the floors and ceilings unscathed. This doesn't mean compromising on design, either – thanks to mix-and-match material options. BW-SPACE-R also provides excellent acoustics.

BW-SPACE-R® is a new invention by **BLUE WEST**. Patent is pending. **BLUE WEST** is a Belgian company specializing in vertical space partitioning. These imaginers of space(s) always seek out the perfect blend of aesthetics, functionality, flexibility, durability and acoustics. The creative team fuses imagination and engineering to create a unified whole.

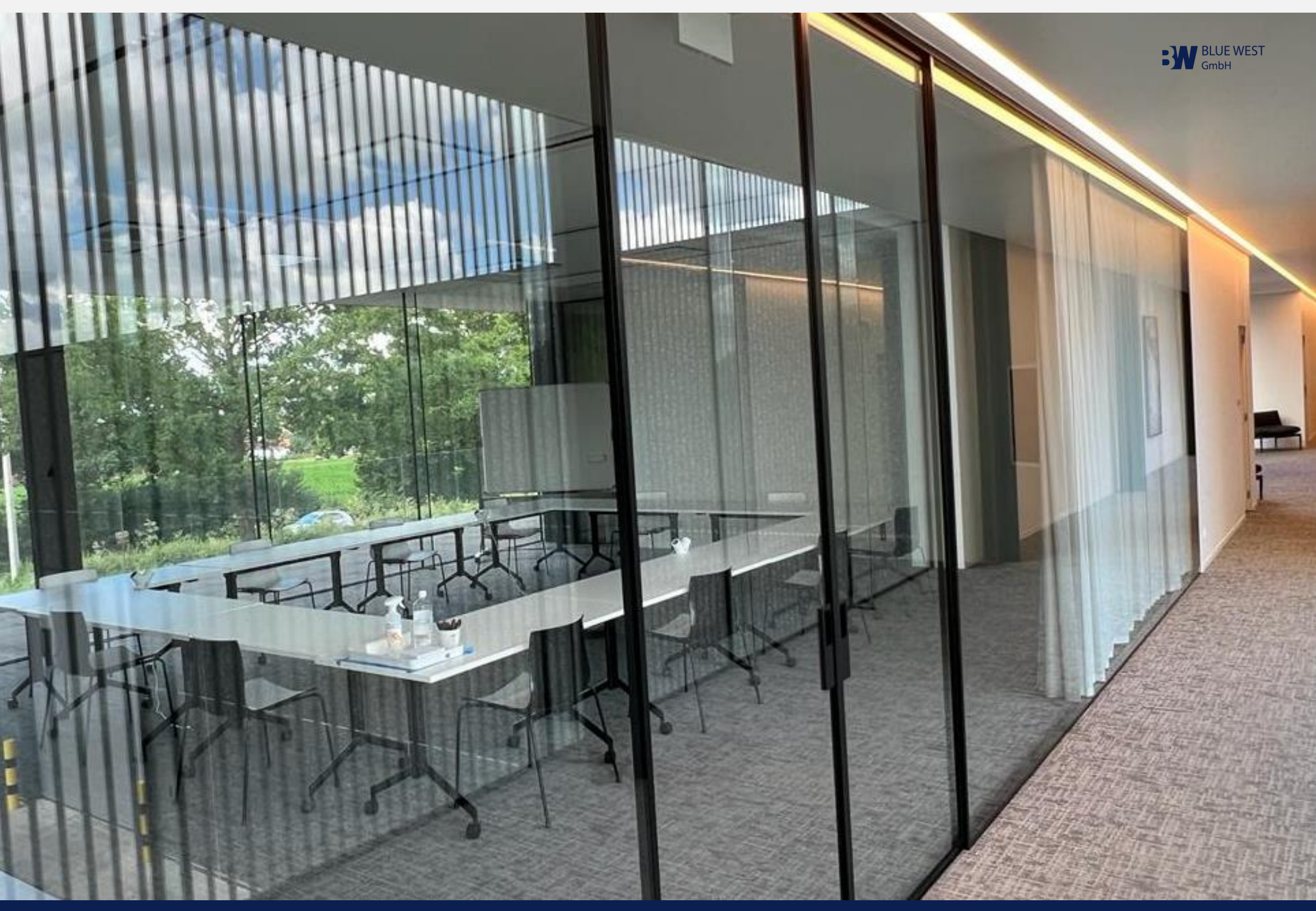
- ❖ Mix & match materials
- ❖ Move to the rhythm of the grid
- ❖ Seamless ceiling, wall and floor connection
- ❖ Evolves along with you
- ❖ Keep the body, change the skin
- ❖ Top-notch acoustic performance

FIRE-RESISTANT GLASS WALLS

Most fire resistant glass solutions require heavy profiling. BLUE WEST BW-Fireblock-R is the slim profile solution for your design. It combines tested and certified fire safety with typical BLUE WEST aesthetics, functionality, integration and finishing.

- ❖ Minimal frame with glass to glass connections
- ❖ Up to EI120
- ❖ Slim profiles – finishing in any RAL color
- ❖ Patent pending click solution for profiling
- ❖ Combination with fire safe glass door
- ❖ Combination with fire safe panel door





BW-G20 + BW-DS

GLASS PARTITION AND MINIMALIST SLIDING DOOR WITH SAFETY GLASS

With this full-height BW-G20 partitioning, light will flood your space in abundance. Slim, barely noticeable profiles provide a tasteful accent to your office environment.

The BW-DS sliding door is a seamless addition, continuing the line of the partitioning without interruption. Safety glass increases the safety factor, as does the lack of doors opening outward. Thanks to the sliders at the top, a track along the floor is unnecessary. Add an optional automatic closing system and the door will gently close itself.

Select your own color (standard or custom RAL color), profile finish (anodized or powder coat, matt or glossy, texture), glazing (clear, frosted, colored, Vanceva glass), door handles or pulls, division into panels or interplay of lines.







BW-G20 + BW-D1S

Full-height glass partitioning and frameless pivot door with central glazing

With this full-height BW-G20 partitioning, light will flood your space in abundance. Slim, barely noticeable profiles provide a tasteful accent to your office environment.

The BW-D1s two-way frameless door is the most minimalist option in our range. Ultra-slim aluminium profiles provide a sleek metal look in line with the latest interior design trends.

A floor spring ensures that the door will close automatically. You can also opt to have it stay open at a 90-degree angle.

Select your own colour (standard or custom RAL colour), profile finish (anodised or powder coat, matt or glossy, texture), glazing (clear, frosted, coloured, Vanceva glass), door handles or pulls, division into panels or interplay of lines.





FULL-HEIGHT GLASS PARTITIONING AND FRAMELESS PIVOT DOOR WITH EXTERNAL GLAZING

With this full-height G20 partitioning, light will flood your space in abundance. Slim, barely noticeable profiles provide a tasteful accent to your office environment.

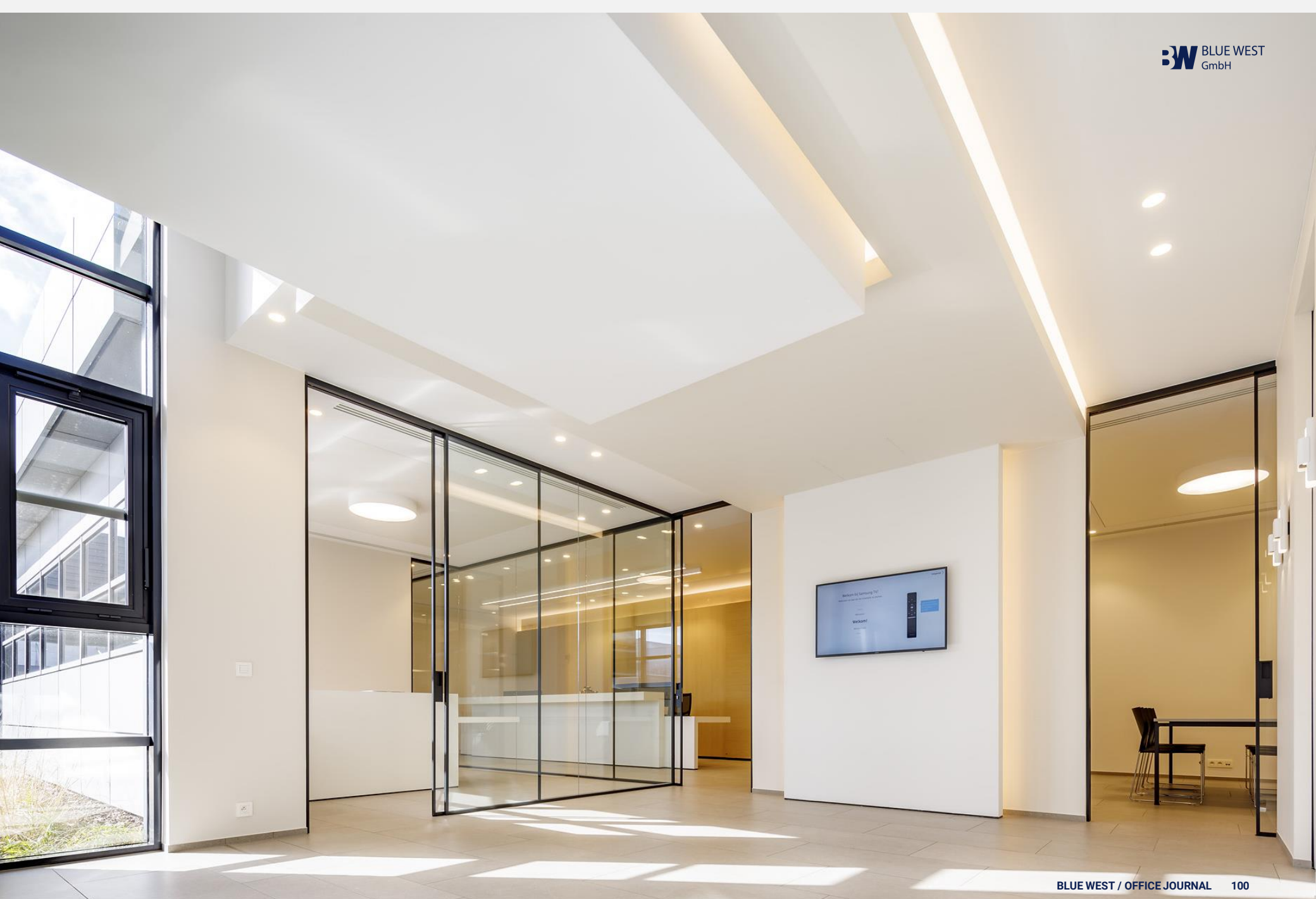
BW-DBS is a sleek, frameless pivot door. It offers the look of a steel internal door, but is much lighter thanks to the slim aluminum profile. An eye-catching addition to any office environment.

A floor spring ensures that the door will close automatically. You can also opt to have it stay open at a 90-degree angle.

Select your own color (standard or custom RAL color), profile finish (anodized or powder coat, matt or glossy, texture), glazing (clear, frosted, colored, Vanceva glass), door handles or pulls, division into panels or interplay of lines.







BW-G80 + BW-DS

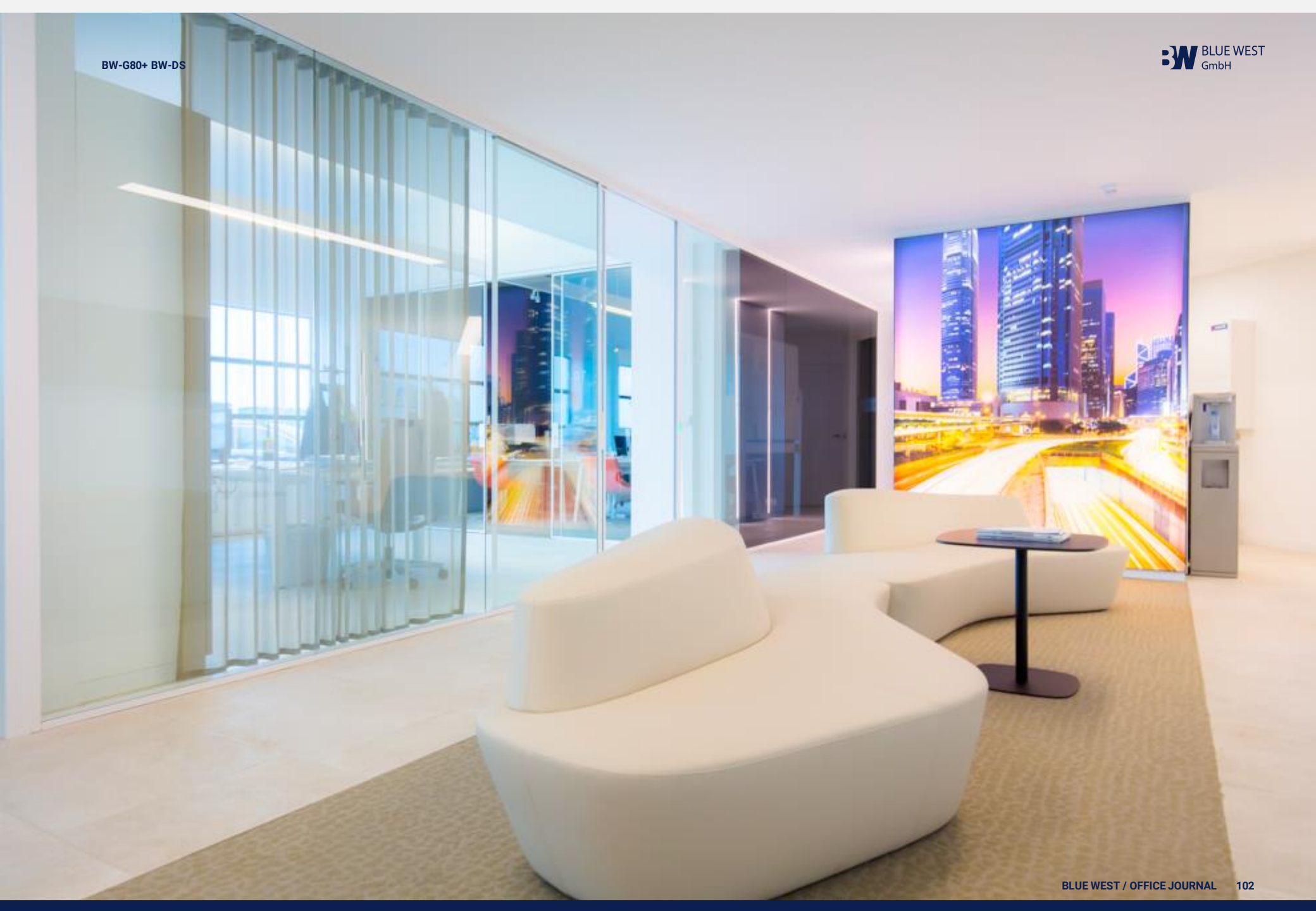
STURDY PARTITIONING AND MINIMALIST SLIDING DOOR WITH SAFETY GLASS

The BW-G80 glass partition (with single or double glazing) offers a bold look and great user friendliness. The triple-channel profiles allow for glass partitions up to 3 meters tall, without a transom. Flush mounting to the ceiling and floor is possible. The system's sturdy construction ensures years of enjoyment, even with heavy use.

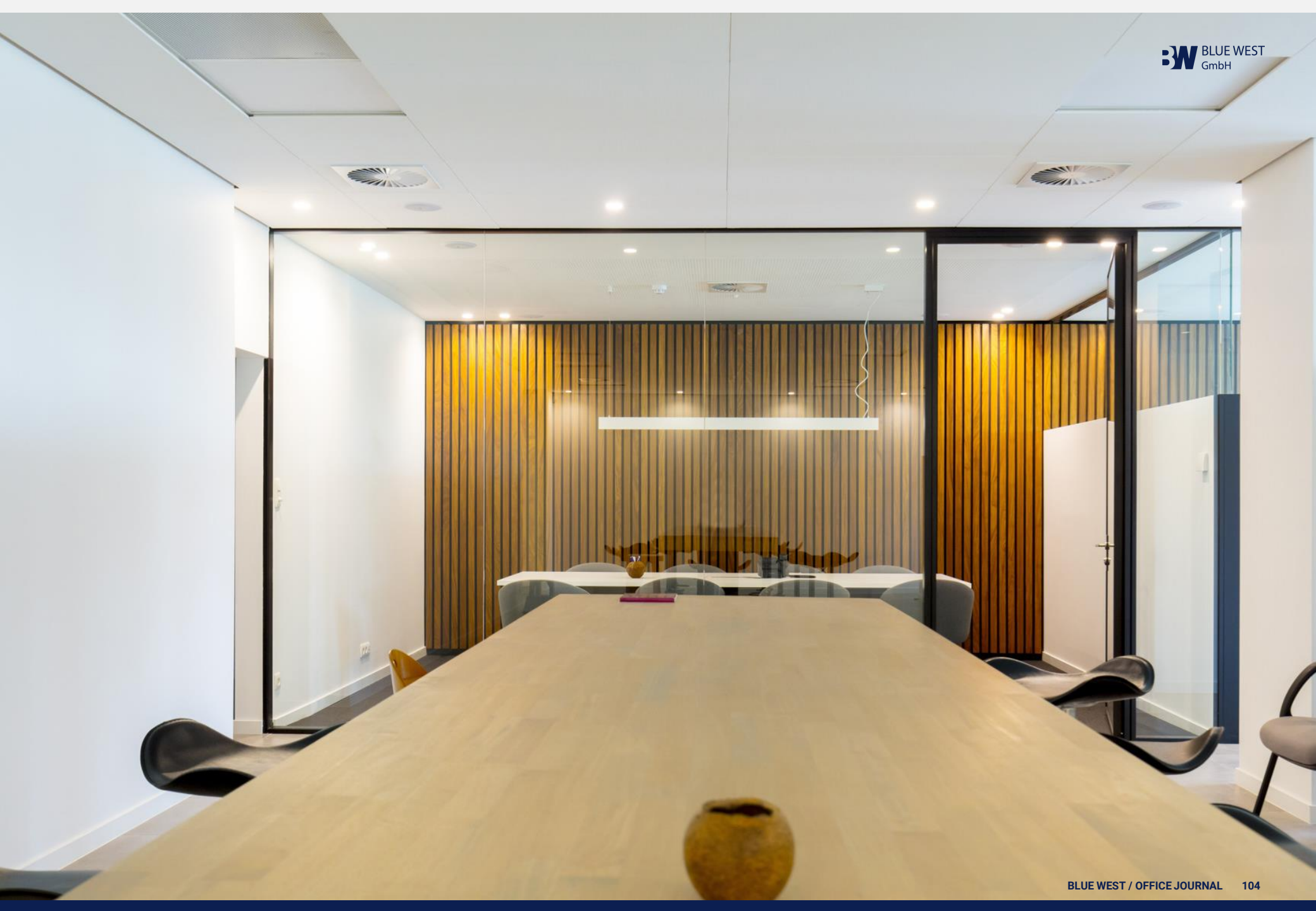
The DS sliding door is a seamless addition, continuing the line of the partitioning without interruption. Safety glass increases safety in the office, as does the lack of doors opening outward. Thanks to the sliders at the top, a track along the floor is unnecessary. Add an optional automatic closing system and the door will gently close itself.

Select your own color (standard or custom RAL color), profile finish (anodized or powder coat, matt or glossy, texture), glazing (clear, frosted, colored, Vanceva glass), door handles or pulls, division into panels or interplay of lines.









STURDY PARTITIONING SYSTEM AND HINGED DOOR WITH HANDLE AND LOCK IN THE GLASS

The **BW-G80** glass partition (with single or double glazing) offers a bold look and great user friendliness. The triple-channel profiles allow for glass partitions up to 3 meters tall, without a transom. Flush mounting to the ceiling and floor is possible. The system's sturdy construction ensures years of enjoyment, even with heavy use.

The contemporary BW-D1-80 hinged door is fully on trend. The steel-look door combines an attractive aluminum frame with a large expanse of glass up to 3 meters tall, allowing light to flood your office in abundance.

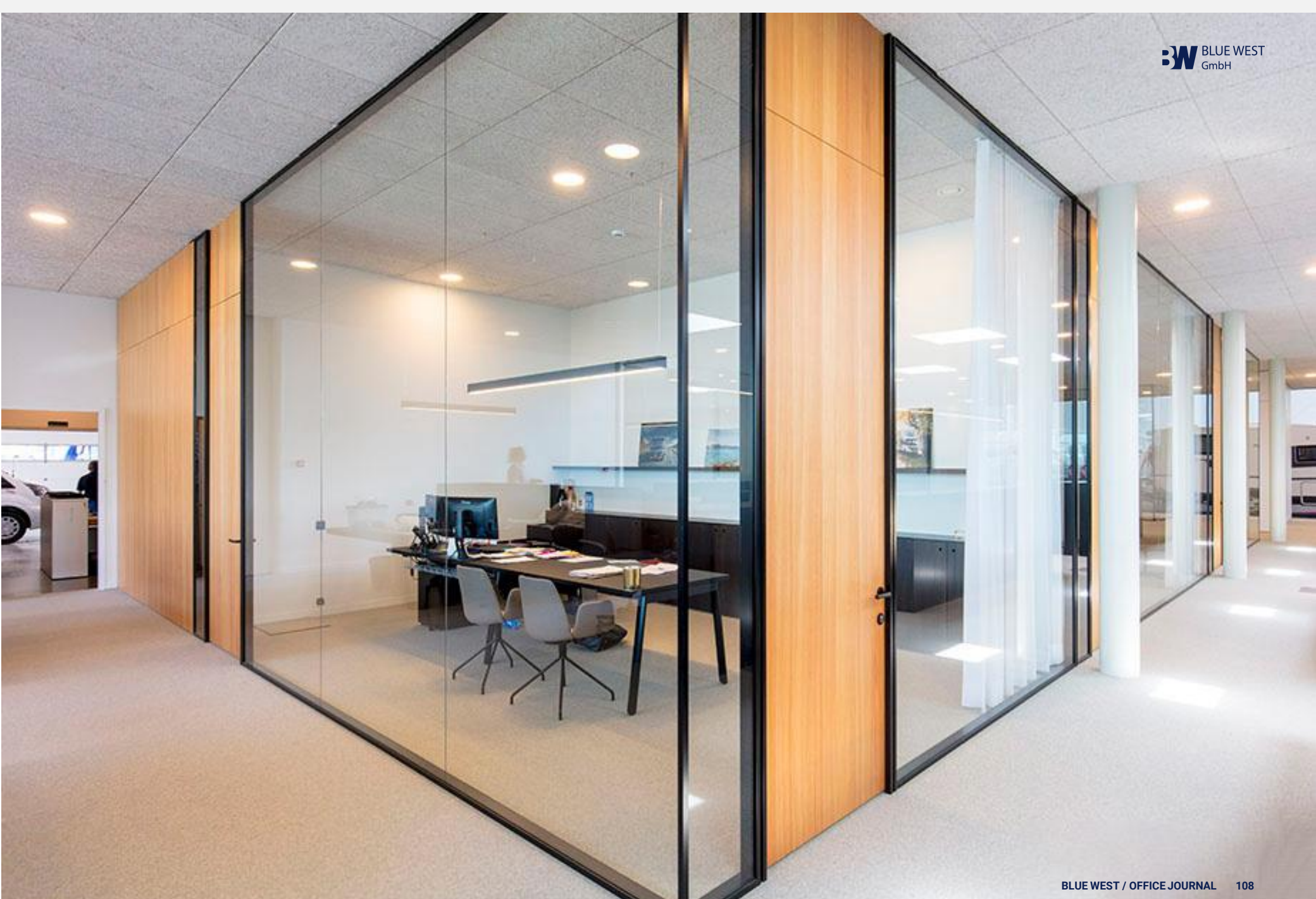
The door swings 135 degrees in one direction. Use of top and bottom pivots avoids unsightly hinges. The handle and the lock plate fit into the glass panel.

Select your own color (standard or custom RAL color), profile finish (anodized or powder coat, matt or glossy, texture), glazing (clear, frosted, colored, Vanceva glass), door handles or pulls, division into panels or interplay of lines.









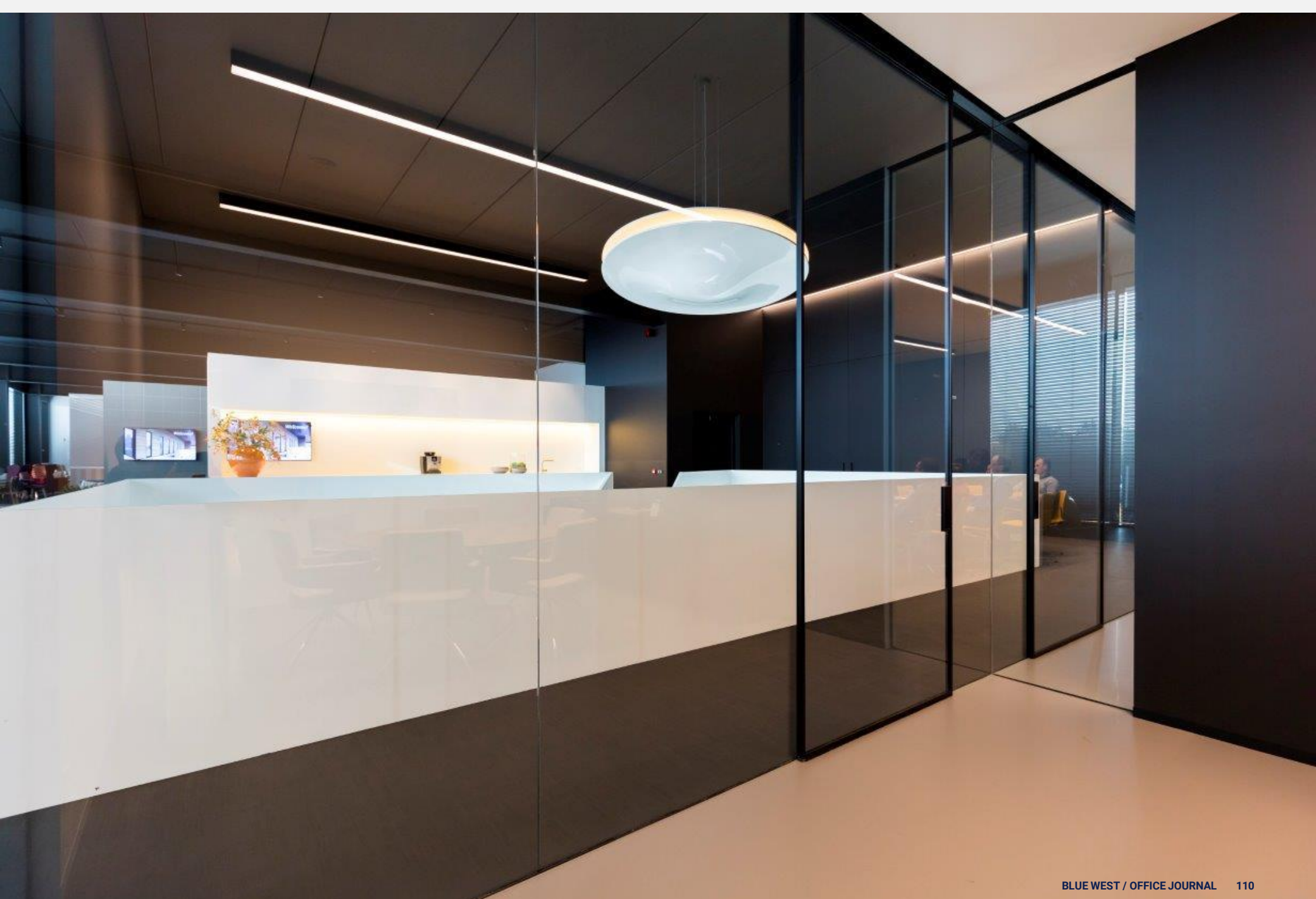
BW-G80 + BW-DW

STURDY PARTITIONING AND WOOD-LOOK DOOR

The **BW-G80** glass partition (with single or double glazing) offers a bold look and great user friendliness. The triple-channel profiles allow for glass partitions up to 3 metres tall, without a transom. Flush mounting to the ceiling and floor is possible. The system's sturdy construction ensures years of enjoyment, even with heavy use.

For a warm look, combine this glass partition with our brand-new **BW-DW** door. Instead of glazing, the door features a wood veneer finish, providing just a bit more privacy. It is also possible to add more insulation to the door for even better acoustics.





FULL-HEIGHT GLAZED PARTITIONING AND SLIDING DOOR WITH SAFETY GLASS

- This **BW-G70** partitioning system has ultra-slim aluminum profiles and glass reaching to the ceiling, creating a great feeling of spaciousness. The profiles can be mounted flush to the ceiling and floor. opt for single or double glazing depending on the required acoustics. This applies to the DS sliding door as well.
- The door is a seamless addition, continuing the line of the partitioning without interruption. Safety glass increases the safety factor, as does the lack of doors opening outward. Thanks to the sliders at the top, a track along the floor is unnecessary. Add an optional automatic closing system and the door will gently close itself.
- Select your own color (standard or custom RAL color), profile finish (anodized or powder coat, matt or glossy, texture), glazing (clear, frosted, colored, Vanceva glass), door handles or pulls.









BW-G70 + BW-D1-70

FULL-HEIGHT GLAZED PARTITIONING AND HINGED DOOR WITH GLAZED SURFACE ON ONE SIDE

- This **BW-G70** partitioning system has ultra-slim aluminium profiles and glass reaching to the ceiling, creating a great feeling of spaciousness. The profiles can be mounted flush to the ceiling and floor. Opt for single or double glazing depending on the required acoustics.
- The **BW-D1-70** framed door's glass is completely flush with the aluminium frame and wall on one side. The door opens 90 degrees one way. The hinges integrate subtly with the rest of the design. The locking mechanism is part of the door's frame.
- Select your own colour (standard or custom RAL colour), profile finish (anodised or powder coat, matt or glossy, texture), glazing (clear, frosted, coloured, Vanceva glass), door handles or pulls.

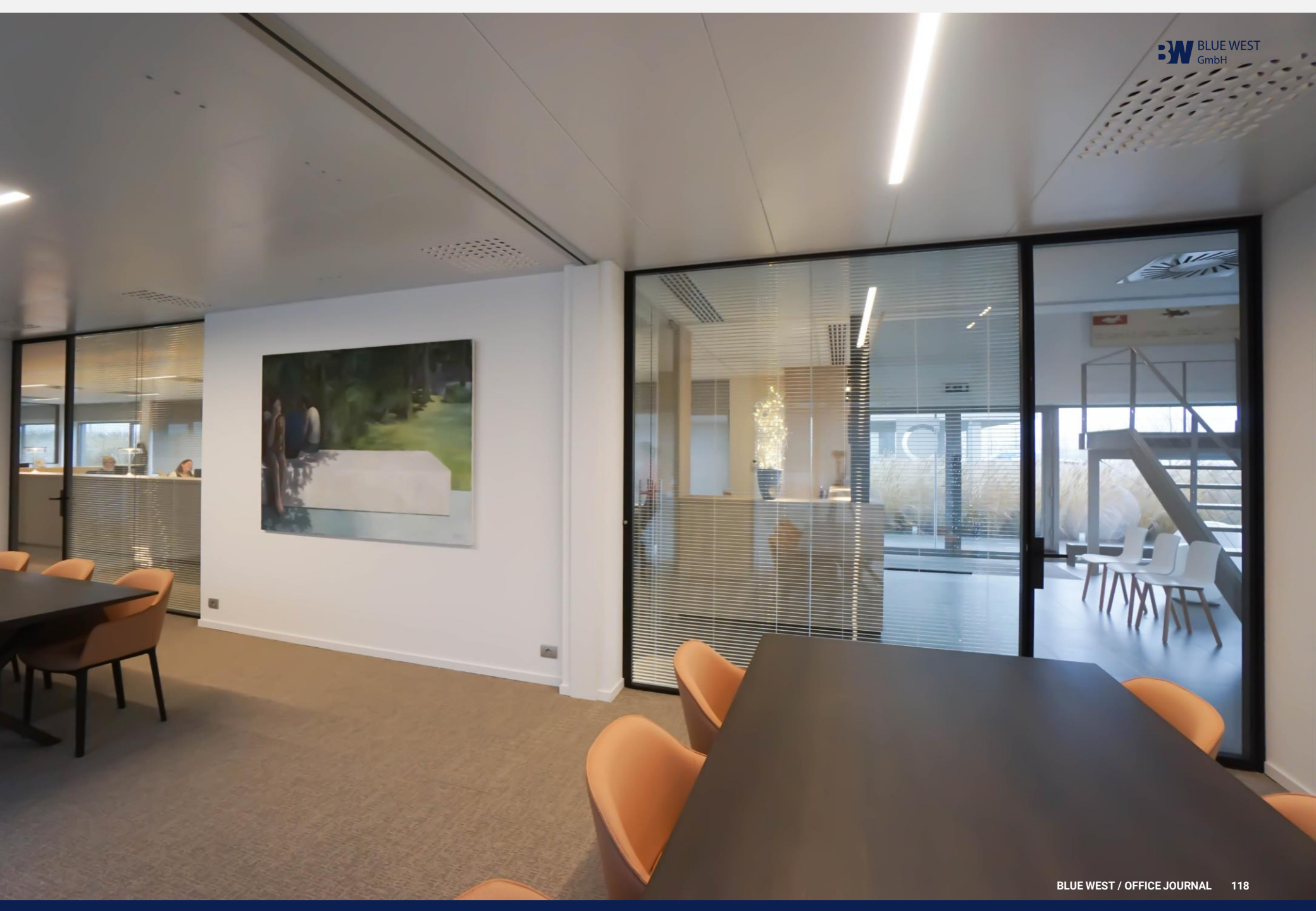




FULL-HEIGHT GLAZED PARTITIONING AND FRAMELESS PIVOT DOOR

- This **BW-G70** partitioning system has ultra-slim aluminum profiles and glass reaching to the ceiling, creating a great feeling of spaciousness. The profiles can be mounted flush to the ceiling and floor. Opt for single or double glazing depending on the required acoustics.
- The sleek DBs pivot door is a perfect addition. The door opening is frameless. It offers the look of a steel internal door, but is much lighter thanks to the slim aluminum profile. An eye-catching addition to any office environment.
- A floor spring ensures that the door will close automatically. You can also opt to have it stay open at a 90-degree angle.
- Select your own color (standard or custom RAL color), profile finish (anodized or powder coat, matt or glossy, texture), glazing (clear, frosted, colored, Vanceva glass), door handles or pulls.





FULL-HEIGHT GLAZED PARTITIONING AND HINGED DOOR WITH GLAZED SURFACE ON ONE SIDE

- This **BW-G70** partitioning system has ultra-slim aluminum profiles and glass reaching to the ceiling, creating a great feeling of spaciousness. The profiles can be mounted flush to the ceiling and floor. Opt for single or double glazing depending on the required acoustics.
- The glass of the **BW-D2-70** steel-look framed door is completely flush with the aluminum frame and the wall on both sides of the door. Minimalist design at its finest! The hinges integrate subtly with the rest of the design. The locking mechanism is part of the door's frame. This door has wonderful acoustics as well.
- Select your own color (standard or custom RAL color), profile finish (anodized or powder coat, matt or glossy, texture), glazing (clear, frosted, colored, Vanceva glass), door handles or pulls







BW-G70 + BW-D2-70S

FULL-HEIGHT GLAZED PARTITIONING AND DOUBLE-GLAZED PIVOT DOOR

- This **BW-G70** partitioning system has ultra-slim aluminum profiles and glass reaching to the ceiling, creating a great feeling of spaciousness. The profiles can be mounted flush to the ceiling and floor. Opt for single or double glazing depending on the required acoustics.
- Our D2-70s pivot door is state-of-the-art. The glass door swings both ways and is distinguished by the way the glass surface and delicate aluminum profile are perfectly flush on either side. This refined detailing provides for a high-quality design. A floor spring allows the door to close automatically or stay open at a 90-degree angle.
- Select your own color (standard or custom RAL color), profile finish (anodized or powder coat, matt or glossy, texture), glazing (clear, frosted, colored, Vanceva glass), door handles or pulls.







BW-M50 + BW-MP

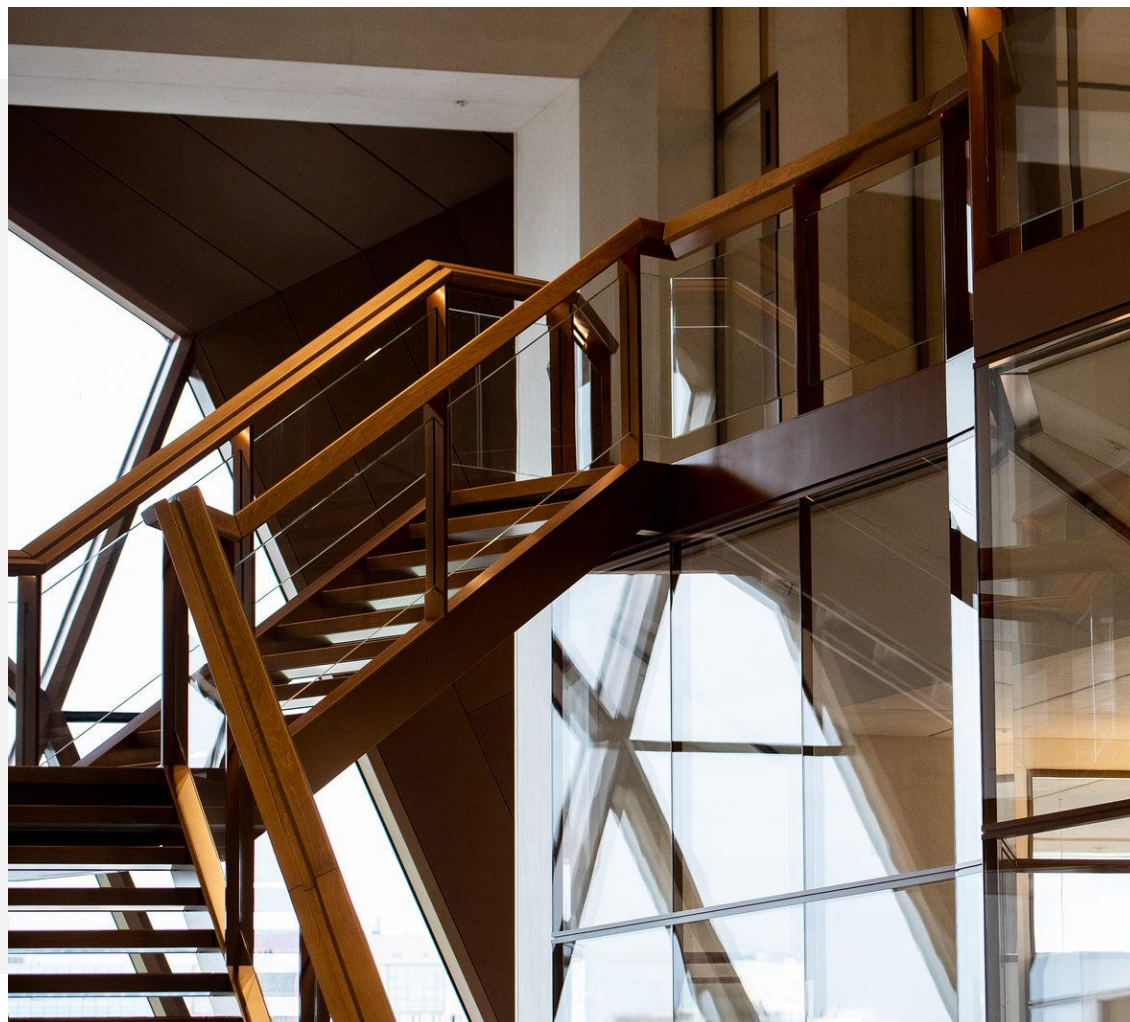
PARTITIONING AND MONOVOLUME HINGED DOOR WITH FRAMES AND PANELS

- This **BW-M50** glass partition is ideal for those who love an industrial look. The aluminum frame with double glazing can be divided according to your preference. The **BW-M50** invites you to get creative. Complete the whole with a mono volume hinged door. This door is constructed using an aluminum frame and can also be divided as you wish. Several glass panes are fixed to either side using adhesive.
- The mount for this mono volume hinged door is frameless. Available with hinges (opening 90 degrees one way) or as a two-way pivot door.
- You can combine various styles and colors of glass in a single partition or door, making the range of design options very broad. Your partitioning will be a true eye catcher!
- Select your own color (standard or custom RAL color), profile finish (anodized or powder coat, matt or glossy, texture), glazing (clear, frosted, colored, Vanceva glass), door handles or pulls





OPTIONS & INTEGRATIONS

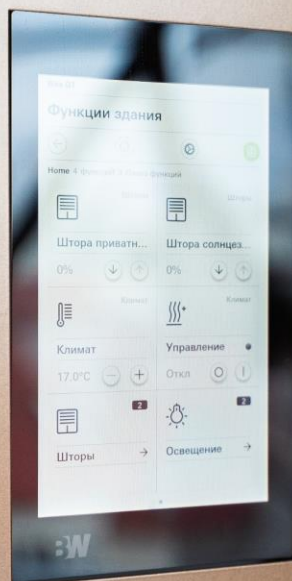


BW TECHNICAL PANEL

**TECHNICAL CASINGS ALLOWING FOR AN EASY
INTEGRATION AND READY ACCESSIBILITY OF
CONTROLS, DISPLAYS AND CABLING**

- We can easily conceal all controls, screens and their cabling in technical panels that seamlessly merge into our door / wall systems.
- Our **BLUE WEST** solutions are unique thanks to the many possibilities to connect and integrate our products with floor ceilings, walls and facades.
- The contemporary working environment requires that all new techniques are easily accessible. Our range of options & integration ensures that you can enjoy your workshop in comfort.





BW FLEXIBLE WALL

GLASS WALL/MOBILE WALL CONNECTION WITH SPECIAL ACOUSTIC CONNECTION

Do you have a flexible wall that you want to connect as imperceptibly as possible to your glass office walls? Our special acoustic connection ensures a soundproof and refined connection between the glass wall and the flexible wall.

Our **BW** solutions are unique thanks to the many possibilities to connect and integrate our products with floor ceilings, walls and facades.

The contemporary working environment requires that all new techniques are easily accessible. Our range of options & integration ensures that you can enjoy your workshop in comfort.



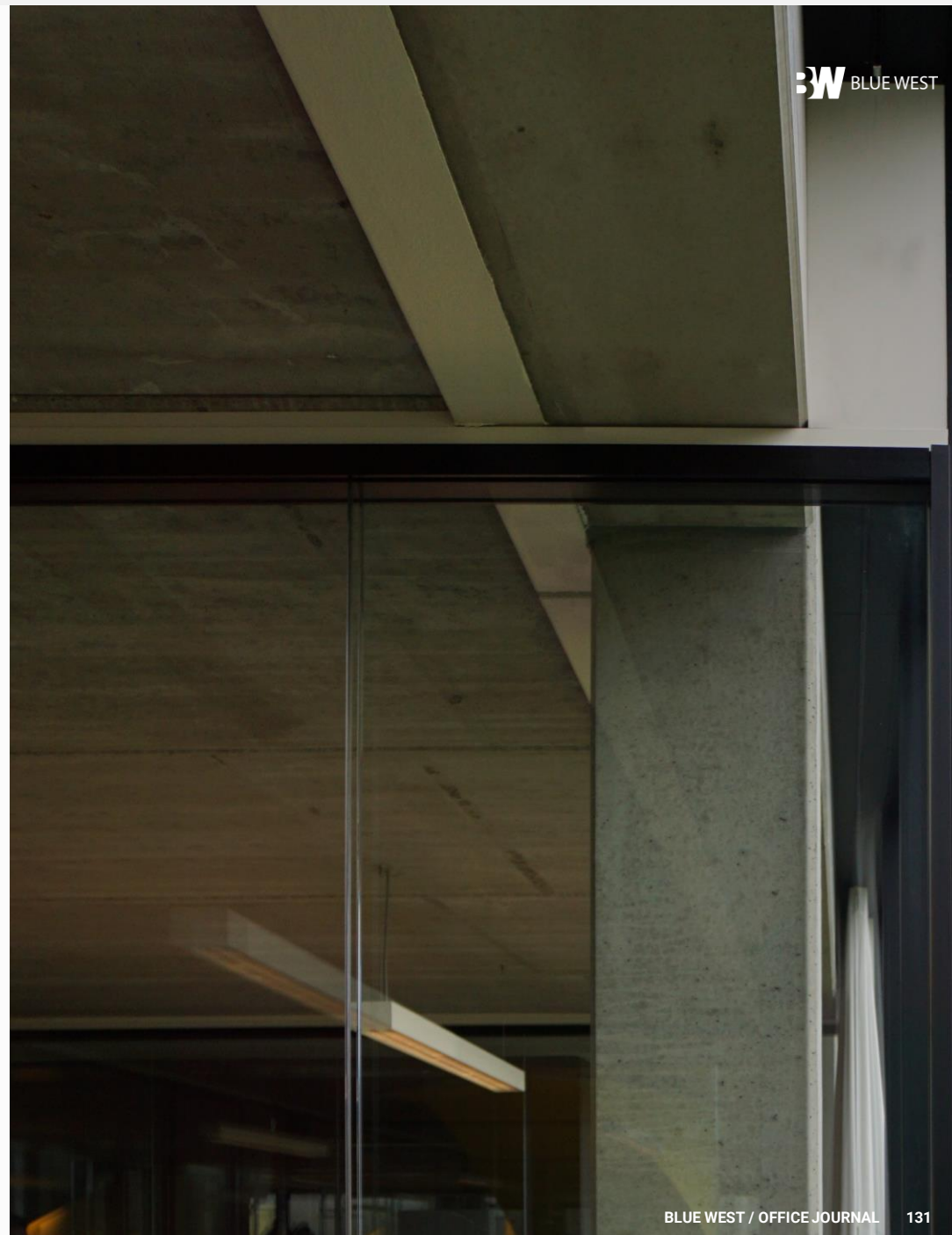
BW FACADE

ELEGANT WALL/FACADE CONNECTION PROFILE AND AN OPTIONAL CONNECTION IN CASE OF HEIGHT DIFFERENCES

We provide a seal between your office walls and the facade with an elegant connection profile. We can even eliminate a height difference between the wall and the facade.

Our **BW** solutions are unique thanks to the many possibilities to connect and integrate our products with floor ceilings, walls and facades.

The contemporary working environment requires that all new techniques are easily accessible. Our range of options & integration ensures that you can enjoy your workshop in comfort.



DISCRETION

OPTIONAL PROVIDING OF SCREENS OR INTEGRATION OF ADJUSTABLE BLINDS BETWEEN GLASS PANELS

Organize your office without sacrificing transparency and sense of space? Our glass partition walls and doors are ideal for this. Still, there is a need for some privacy now and then. Integrating slats in double-glazed wall gives you the option of closing off your working environment.

Our **BW** solutions are unique thanks to the many possibilities to connect and integrate our products with floor ceilings, walls and facades.

The contemporary working environment requires that all new techniques are easily accessible. Our range of options & integration ensures that you can enjoy your workshop in comfort.



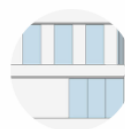
AUTOMATIC MOVABLE PARTITION

250
mm/s

High-speed travel to the required position



ComfortDrive track drive system with smart bus technology



Individually programmable for flexible room management

STOP



Reliable safety with system stop and reverse on contact with obstructions



R_w
58 dB

Sound reduction ratings up to R_w 58 dB with optimised profiles and seals.



Low specific weights per unit area for easy handling and obvious structural advantages



Smaller-dimensioned stacking areas and parking niches



Decorative melamine finishes from the "Classic Collection"

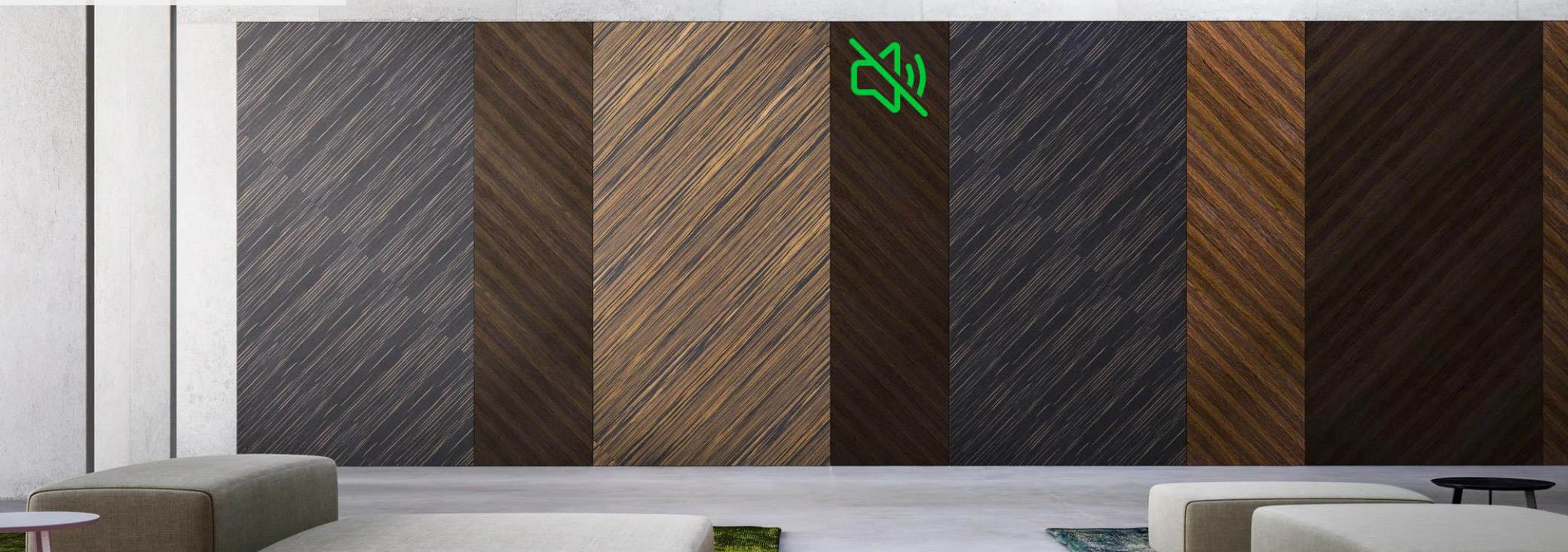
MOVABLE PARTITION



BW

QUALITIES

LEADING THE FIELD IN SOUND INSULATION



An excellent solution for parallel events

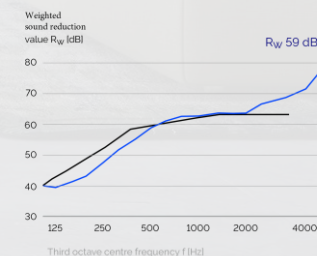
As well as having the function of visually sub-dividing areas, movable partition walls also have the role in many applications of filtering acoustic signals in order to prevent noise disturbing the users of the other rooms. Room partitioning with reliable acoustic insulation properties is a must, particularly when events run concurrently.

The BLUE WEST BLUE FEST system ensures unsurpassed sound insulation without compromising ease of use. As freely oscillating elements, the clip-on fascia boards reduce the transmission of structure-borne noise, thus ensuring extremely high acoustic performance.

Weighted sound reduction

Enhancing the well-being of room users

Special acoustic panels increase sound absorption and reduce reverberation. These advantages, coupled with the high quality standards and visual impact of BLUE WEST BLUE FEST, greatly enhance user comfort and offer incomparable benefits for areas where people come together to communicate.



ACOUSTIC MOVABLE PARTITION



Absorbs noise to create an improved in-room ambience



Exceptional absorption values



Wide range of surface finishes and a variety of perforation patterns



E1 quality committed to ensuring a healthy interior and environment

BW THERM SLIDING WALL SYSTEM

The BW Therm horizontal sliding wall system is a good choice wherever greater temperature differences must be separated from each other. Thanks to its easy latch operation on the pivoting/sliding panel, the BW Therm makes it really simple to switch the panel function in an instant. All other function elements are invisibly integrated into the re-designed, linear frame system.



Features

- Thermally-insulating closure due to circumferential frame profile with thermal separation at all panels
- A convenient movement for switching from the sliding to door functionality on the pivoting/sliding panel.
- Panel height up to 3500 mm (pivoting/sliding panel up to 3000 mm)
- All pivoting/sliding panels are equipped with the **BDD-DS96** with a hold-open device, which is invisibly integrated into the door profile.

Standards

Heat protection	<ul style="list-style-type: none">• Heat transition coefficient in accordance with DIN EN ISO 10077-1,• -2UD [W/m²K] = 1,8
Endurance strength	<ul style="list-style-type: none">• Class 3 in accordance with DIN EN 1527, corresponds to 25,000 cycles for hanging sliding doors > 100 kg• Class 3 in accordance with DIN EN 1191, corresponds to 20,000 cycles for door function for pivoting double-action panel, pivoting double action sliding panel and single-action door
Impact test	<ul style="list-style-type: none">• Class 5 (highest achievable class) in accordance with DIN EN 13049 (simulation and impact loads)
Corrosion test	<ul style="list-style-type: none">• Class 4 in accordance with DIN EN 1670 (proximity to coast)



MOVABLE WALL SYSTEM

BW



**VERTICAL MOVABLE
WALL SYSTEM**



BW SAFE SLIDING WALL SYSTEM

BW SAFE offers enhanced convenience and security for the installer and user. The new door rail enables an effortless and time-saving installation thanks to proven Clamp & Glue technology. Suitable for toughened glass thicknesses 10-19mm with optional safe use of laminated safety glass for added safety.



Features

The new 3-in-1 multi-lock offers three options for secure locking. Additional intelligent solutions like a status display, a concealed door closer and double brush seals to minimise drafts, ensure more convenience and security. Extensive design freedom allows adaptation to any interior ambience.

- Hassle-free installation thanks to new Clamp & Glue technology
- Enhanced safety in use with laminated safety glass (LSG)
- 3-in-1 multi-lock gives more locking possibilities in one component
- New status display clearly shows the locking status of the door panel
- Less draft, greater comfort with innovative double brush seals
- Glass panes can have the following glass thicknesses: 10mm, 12mm, 12.8mm, 13.5mm, 15mm, 17mm and 19 mm.

DATA

Max. system height:	4000 mm
Max. panel width:	1250 mm
Max. panel weight:	150 kg Seamlessly accepts glass thicknesses ranging from 10 to 19 mm
Tested and certified:	Wind load (frame bending): EN 12211 Class 1 Fatigue strength: DIN EN 1527 Class 2 and DIN EN 1991 Class 3 Shock test: DIN EN 13049 Class 5 (highest class) Corrosion test: DIN EN 1670 Class 4 EPD (Environmental Product Declaration): ISO 14040

**BW SAFE SLIDING WALL
SYSTEM**



**BW SAFE SLIDING WALL
SYSTEM**

BW





FIRE RATED DOORS









PANIC BARS

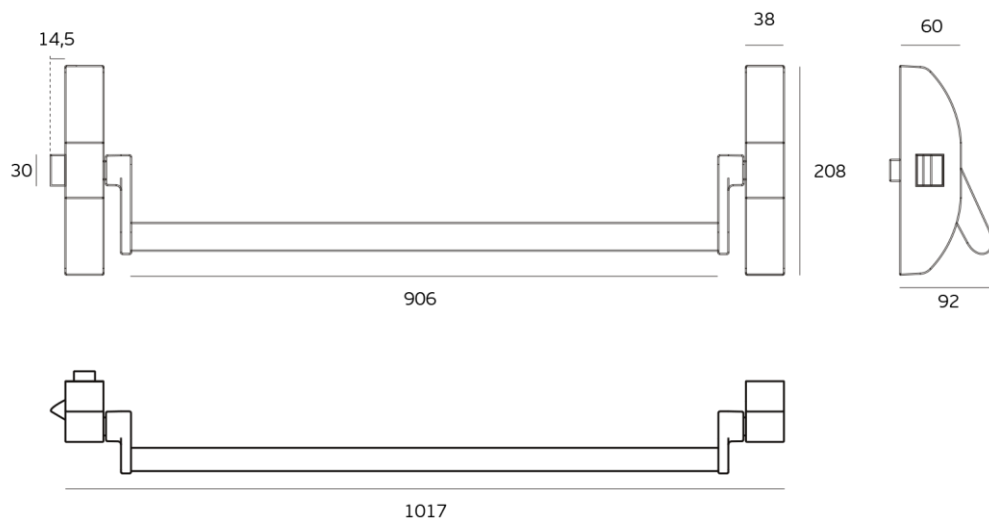


BDE-3.20.951.K1

PANIC EXIT DEVICES FOR GLASS DOORS



Reversible anti panic door lock for single glass doors. Closing system through a side latch. Without access from external side.



PANIC EXIT BAR FOR GLASS DOORS

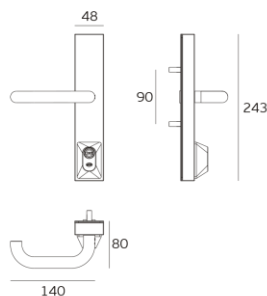
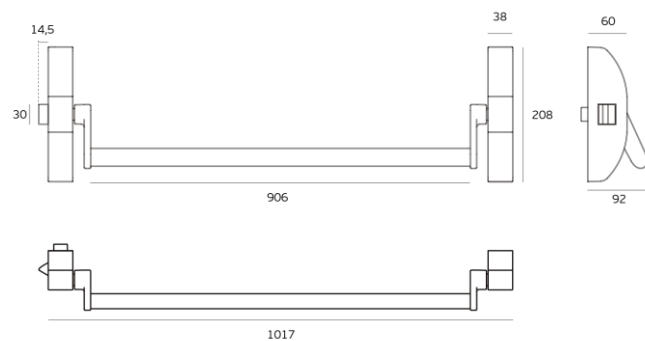


BDE-3.20.952.K2

PANIC EXIT DEVICES FOR GLASS DOORS



Reversible anti-panic door lock for single glass doors. Closing system through a side latch. Opening by key from the outside. Lever handle with plate and cylinder included.

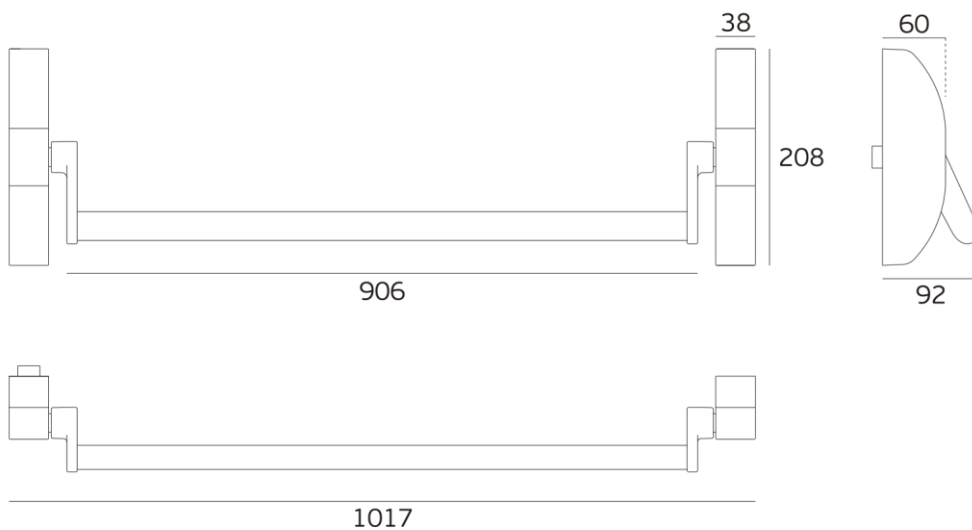


BDE-1.20.957

ANTIPANIC LOCK



Reversible panic exit device for single doors. Without side latch.
 Applicable with mortice door lock BDE-1.20.960/BDE.1.20.960.C.
 Opening by key from the outside.
 Lever handle with plate and cylinder not included



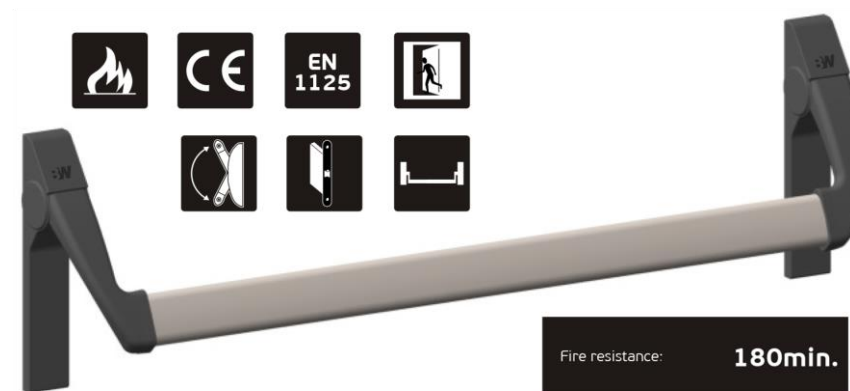
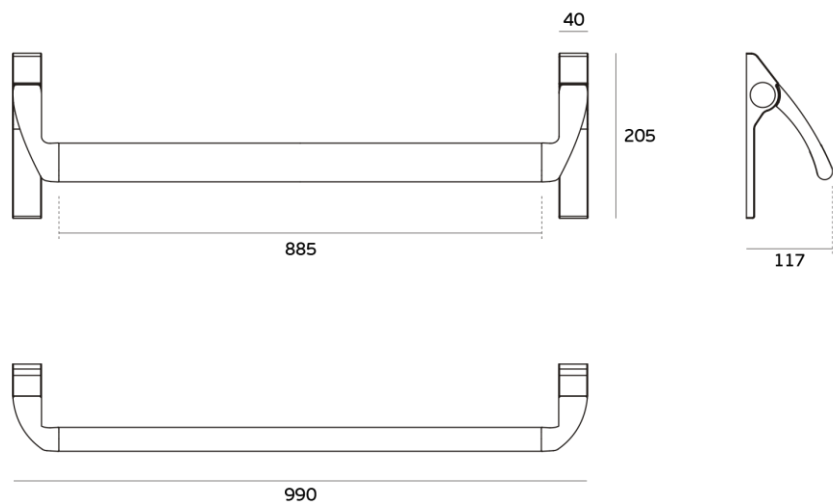


BDE-F1.20.945

ANTIPANIC LOCK



Reversible anti-panic door lock for single doors. Without side latch. Applicable with mortise lock .Opening by key from the outside. Lever handle with plate and cylinder not included

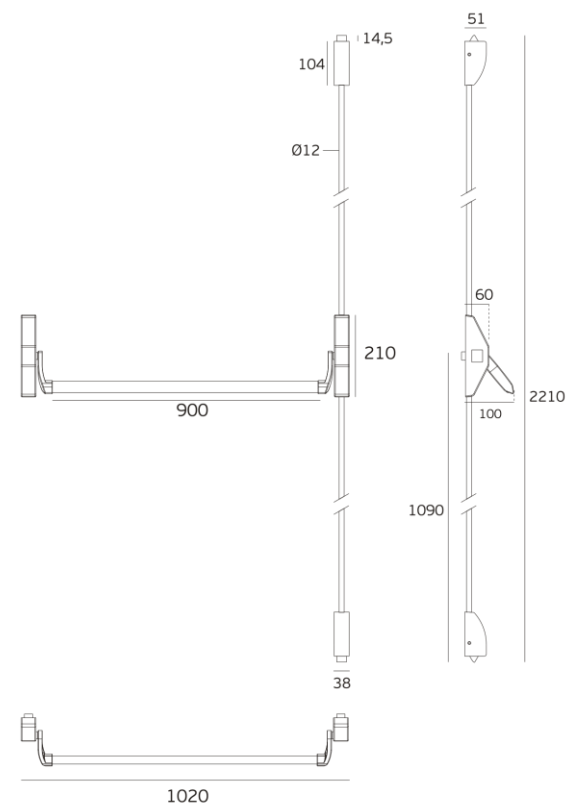
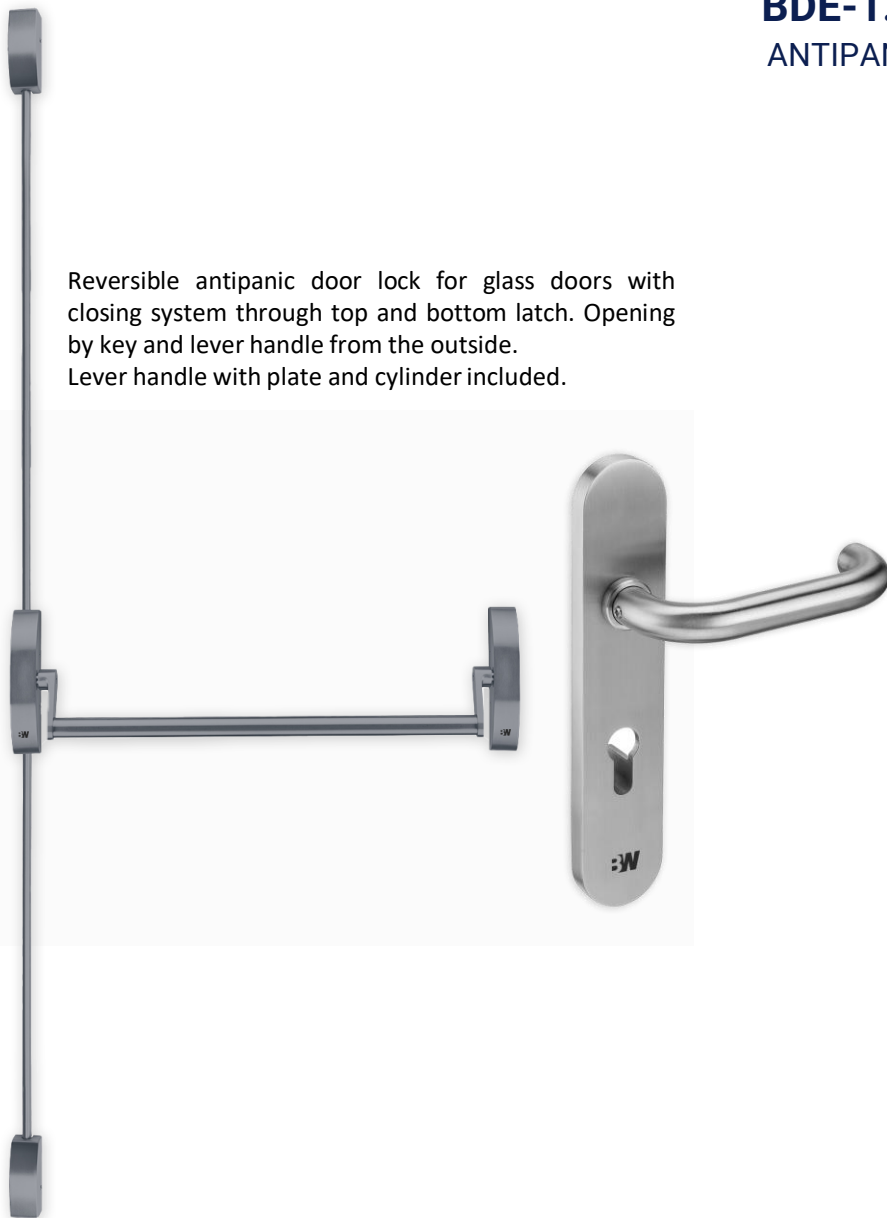




BDE-1.20. 954.KIT

ANTIPANIC DOOR LOCK

Reversible antipanic door lock for glass doors with closing system through top and bottom latch. Opening by key and lever handle from the outside. Lever handle with plate and cylinder included.

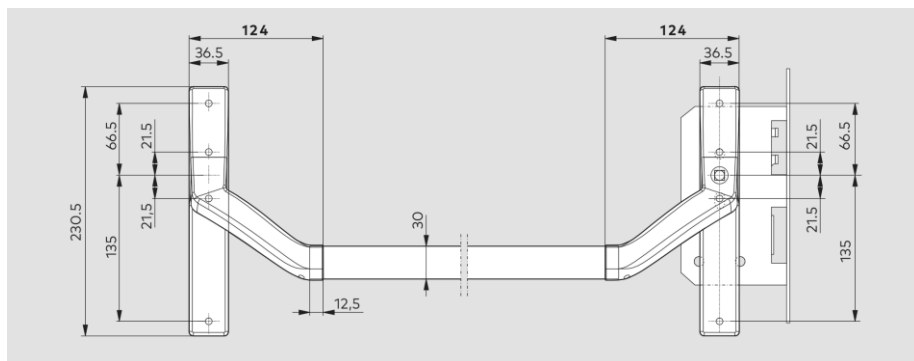


BDE-D2500

TOUCH BAR FITTINGS FOR TIMBER DOORS



With its series **BDE-D2500** (touch bar), the **BLUE WEST** Premium project door furniture and corresponding complementary accessories, **BLUE WEST** is able to offer a high-performance panic hardware system ideal for both internal and external timber door applications. The integrated mortise panic/emergency escape lock enables the door to be engaged by both latch and bolt.





ACCESS CONTROL DEVICES





BW-OP-VID-PRO-RDR



The **BLUE WEST** Video Reader Pro combines the heightened security of a built-in high resolution camera with the form factor of a mullion door reader. Automatically associate video footage with access events, alerts, and motion, and visually monitor entries in the **BW** mobile app, and the Control Center.

The Video Reader Pro is a multi-technology reader that supports both low (125 kHz) and high (13.56 MHz) frequencies. The camera angle is adjustable during installation, ensuring optimal video coverage. The Video Reader Pro is ONVIF Profile S and T compliant to easily integrate with third-party video management systems, and connects to legacy access control panels in Standalone Mode or via Mobile Gateway.



Fast & reliable

Patented Triple Unlock with Bluetooth, WiFi and cellular data



Touchless access

Supports hands-free Wave to Unlock, mobile or watch app, tablet, HF and LF keycards, fobs, and Cloud Key



Video at the door

Associate video with access events or alerts and visually monitor entries from the app or Control Center



Cloud security

Encrypted end-to-end communication, strong public key cryptography



Interoperability

Easily integrates with physical on-premise systems and logical software systems



Simple management

Software runs in the cloud, no need to set up or maintain local servers and software



Capacity tracking

Track occupancy and enforce capacity limits with innovative BLE functionality



Monitoring

Built-in diagnostic and real-time troubleshooting insights



Reliability

Instant software upgrades ensure consistent, high-quality performance



BW-OP-VID-PRO-INT



The **BLUE WEST** Video Intercom Reader Pro combines a built-in high resolution camera, intelligent intercom, and multi-technology reader into a slim and sleek form factor. Visitors use the intercom to initiate calls, communicate with assigned users, and are visually identified within the **BLUE WEST** app. Automatically associate video footage with access events and visually monitor entries in the **BW** Control Center. The Video Intercom Reader Pro is a multi-technology reader that supports both low (125 kHz) and high (13.56 MHz) frequencies. The camera angle is adjustable during installation, ensuring optimal video footage.



Works with any system

Easily integrates with legacy access control systems, logical software systems, and existing video systems via ONVIF-compliant platform



Touchless reliable access

Our patented Triple Unlock technology supports hands-free supports hands-free Wave to Unlock, mobile or watch app, tablet, HF and LF keycards, fobs, and Cloud Key



Video at the door

Associate video with access events or alerts and visually monitor entries from the app or Control Center



Smart intercom

Visitors can say the name of the person they're visiting, ask to speak to a receptionist, or leave a voicemail, all via the intercom's intelligent voice interface



Clear calls

Two-way audio streaming with echo and noise cancellation lets you easily communicate with guests at the door



Easy to install

Sleek mullion form factor is easy to mount and install with simple PoE connectivity and snap-in design



Cloud security

Encrypted end-to-end communication, strong public key cryptography



Capacity tracking

Track occupancy and enforce capacity limits with innovative BLE functionality



Monitoring

Built-in diagnostic and real-time troubleshooting insights



BW-OP-R2-STND Standard Door Reader



The **BLUE WEST** Standard Smart Reader v2 leverages industry leading security combined with an elegant design that will enhance any door and office environment. The reader supports multiple touchless access methods, including Wave to Unlock, in-app and remote unlocks, and unlocking via a Smart Watch. This multi-technology reader supports both low (125 kHz) and high (13.56 MHz) frequencies, plus a wide variety of key cards and fobs.



Fast & reliable

Patented Triple Unlock with Bluetooth, WiFi and cellular data



Touchless access

Supports hands-free Wave to Unlock, mobile or watch app, tablet, HF and LF keycards, fobs, and Cloud Key



Reader security

Stores no sensitive data, tamper resistant



Fail safe

Designed to withstand power failures and Internet outages



Easy to install

Standard wiring, easily replaces legacy systems



Capacity tracking

Track occupancy and enforce capacity limits with innovative BLE functionality

BW-OP-R2-MULL Mullion Door Reader



The **BLUE WEST** BW-Mullion Smart Reader v2 leverages industry leading security combined with an elegant design that will enhance any door and office environment. The reader supports multiple touchless access methods, including Wave to Unlock, in-app and remote unlocks, and unlocking via a Smart Watch. This multi-technology reader supports both low (125 kHz) and high (13.56 MHz) frequencies, plus a wide variety of key cards and fobs. Innovative BLE functionality allows the reader to track occupancy and supports contact tracing. The mullion form is ideal for surface mounting where space is limited, like on a doorframe.



Fast & reliable

Patented Triple Unlock with Bluetooth, WiFi and cellular data



Touchless access

Supports hands-free Wave to Unlock, mobile or watch app, tablet, HF and LF keycards, fobs, and Cloud Key



Reader security

Stores no sensitive data, tamper resistant



Fail safe

Designed to withstand power failures and Internet outages



Easy to install

Standard wiring, easily replaces legacy systems



Capacity tracking

Track occupancy and enforce capacity limits with innovative BLE functionality

PHYSICAL ACCESS CONTROL SOLUTIONS (INTERIOR)



BW-ONYX-S TRIPOD TURNSTILES



Ergonomic design with stylish body lines is the defining feature of this turnstile. The inclined scratch resistant glass top gives this turnstile a futuristic look making it a stylish architectural element to compliment any modern interior.

These turnstiles are equipped with an automatic bi-directional servo-drive mechanism with a robust locking system and are able to operate reliably and efficiently in high traffic flow locations.

This model has a robust hub with stainless steel pods and a fully automatic anti-panic system, where in the case of an emergency, the arms are automatically lowered and users can freely pass through unhindered. The cabinet tops are made of a scratch-resistant black glass, which allows simple maintenance and long lasting aesthetics. The sleek LED's follow the lines of the turnstile's body, and can be both static and dynamic in operation. Additionally the pulsing display indicates the direction of travel through the turnstile. Two RFID readers are integrated under the top glass reader panels, with LED lighting which provides a clear indication for users to present their access control cards. The combination of all of these LED features clearly determines the status of the passage (Green – Access authorized, Red- Access denied and Blue – Standby mode).

BW-ONYX-M TRIPOD TURNSTILES



Ergonomically designed with stylish lines which encapsulates a sturdy chassis and efficient control system, producing a unit which is ideal for today's contemporary interiors. These turnstiles are equipped with an automatic bi-directional servo-drive mechanism with a robust locking system and are able to operate reliably and efficiently in high traffic flow locations. This model is equipped with an automatic anti-panic system, where, in the case of an emergency, the arms are automatically lowered and users can freely pass through unhindered. The cabinet tops are made of a scratch-resistant black glass, which allows simple maintenance and long lasting aesthetics. The sleek LED's follow the lines of the turnstile's body, and can be both static and dynamic in operation. Additionally the pulsing display indicates the direction of travel through the turnstile. Two RFID readers are integrated under the top glass reader panels, with LED lighting which provides a clear indication for users to present their access control cards. The combination of all of these LED features clearly determines the status of the passage (Green – Access authorized, Red- Access denied and Blue – Standby mode).

BW-CENTURION-M TRIPOD TURNSTILES



Ergonomically designed with stylish lines which encapsulates a sturdy chassis and efficient control system, producing a unit which is ideal for today's contemporary interiors. These turnstiles are equipped with an automatic bi-directional servo-drive mechanism with a robust locking system and are able to operate reliably and efficiently in high traffic flow locations. This model is equipped with an automatic anti-panic system, where, in the case of an emergency, the arms are automatically lowered and users can freely pass through unhindered. The cabinet tops are made of a scratch-resistant black glass, which allows simple maintenance and long lasting aesthetics. The sleek LED's follow the lines of the turnstile's body, and can be both static and dynamic in operation. Additionally the pulsing display indicates the direction of travel through the turnstile. Two RFID readers are integrated under the top glass reader panels, with LED lighting which provides a clear indication for users to present their access control cards. The combination of all of these LED features clearly determines the status of the passage (Green – Access authorized, Red- Access denied and Blue – Standby mode).

BW-CENTURION-M TWIN TRIPOD TURNSTILES



BW-CENTURION-M Twin is one of the most popular of the tripod arm style turnstiles. Taking minimum space and giving maximum efficiency the fast responding motor and quick operation will eliminate crowding at the entrance. The drop arm function efficiently enables free passage in case of emergency. A brushed or polished stainless steel finish will suit any interior (powder coated version available). The enclosure design of this vertical tripod turnstile means it is suitable for outdoor installation without an additional canopy or extensive alterations. As with other turnstiles in this series, BW-CENTURION-M Twin is available with a back-up battery connection.



BW-BASTION – M TWIN TRIPOD TURNSTILES



BW-Bastion-M is one leg base tripod gate. BW-Bastion-M tripod access system has a new mechanism BW-Triservo-M. BW-Bastion-M has a double LED indication too. Enlarged housing of this access turnstile allows getting extra strength and robust benefits which keep pedestrian traffics of high intensity.

Advantages:

- Bi-directional motorized tripod turnstile with panic / bar drop function;
- High quality at a cost effective price;
- Integration with any type of access control and ID systems;
- Low power consumption;
- Panic / bar drop function with automatic reset;
- Whisper quiet, low noise operation;
- Optional indoor or outdoor housing types;
- Wide range of accessories; Availability of a back-up battery connection;
- Complete supply set as a standard.

BW-SKULL – M TRIPOD TURNSTILES



BW-SKULL-M is a gate barrier with a special wall mounting design. BW-Skull-M turnstile has a double LED indication - on the side and on top. A variety of housing finishing types enables this tripod turnstile to be fitted to a range of installation sites, both indoors and outdoors. It includes an anti-panic function (to prevent injury in the case of people panicking by allowing fast and easy egress to the people in the building).

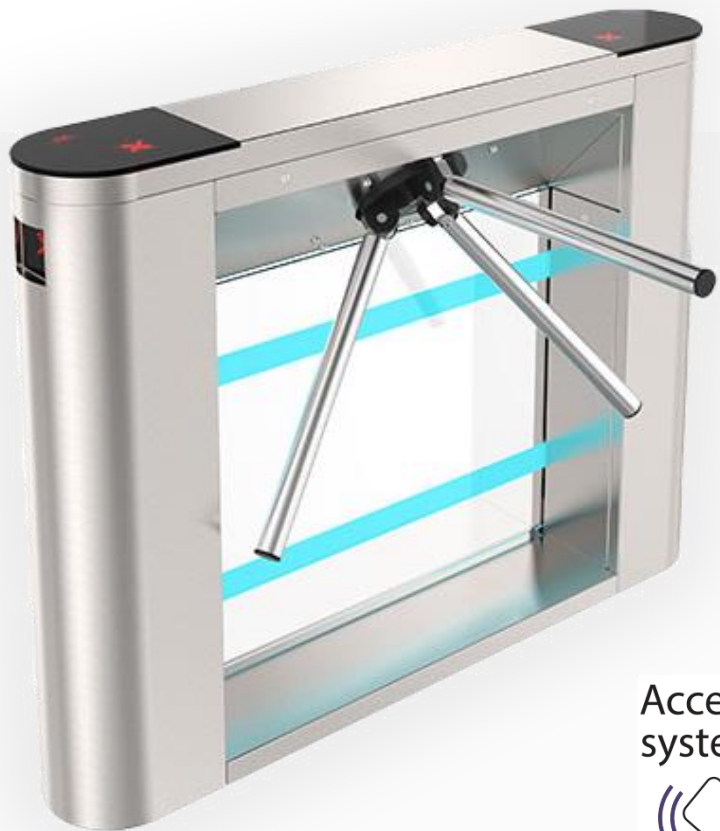
Advantages:

- Bi-directional motorized tripod turnstile with panic / bar drop function;
- High quality at a cost effective price;
- Integration with any type of access control and ID systems;
- Low power consumption;
- Panic / bar drop function with automatic reset;
- Whisper quiet, low noise operation;
- Optional indoor or outdoor housing types;
- Wide range of accessories; Availability of a back-up battery connection;
- Complete supply set as a standard.

VISION
EXCHANGE



BW-GALAXY-M TRIPOD TURNSTILES



BW-Galaxy-M turnstile combines the functional Twix and stylish Sweeper. Galaxy M turnstile access consists of transparent glass framed by high strength steel. The contemporary design of the cabinet is a stylish addition to the range. While the housing is manufactured from stainless steel, a number of finishes are available, polished, brushed etc. The glass is equipped with LED indicators that change color depending on the entrance mode. On the top of Galaxy M tripod barrier turnstile is a card reader and LED display. Galaxy - M has new mechanism Triservo-M.

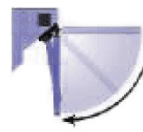
Access control
system



Push
button



Drop-arm



Motorized



Bi-directional



BW-GATE-TS SWING GATES



BW-GATE-TS gates are suitable for all buildings and interiors. **BW-GATE-TS** automatic gate has a motorized drive. Swing gates offer a variety of different dimensions making them a useful solution to provide access control to people with special needs or are disabled. This type of access control equipment can be controlled manually both by push button or interfaced with wide variety of access control systems. Mostly, these solutions are used together with other turnstiles to provide wide lanes of up to 900 mm. The design and operation of these gates enables individuals to pass freely, which is not possible with some other waist height turnstiles.

- Advantages: Bi-directional;
- High quality at a cost effective price;
- Integration with any type of access control and ID systems;
- Low power consumption;
- Whisper quiet, low noise operation;
- Possibility of gate opener customization;
- Wide range of accessories;
- Complete supply set as a standard;
- Fail safe.



BW-GATE-GS SWING GATES



BW-GATE-GS gates offer single or dual direction control of pedestrian access. The primary purpose of the servo-type swing gate turnstile is a control of pedestrian access for industrial premises, administrative establishments, banks, offices, shops, stations and other sites. Due to its unique shape and variety of models, it can suit any interior. That turnstile range is easy to use, compact in size and feature a blade of glass in the swing gate. When receiving a command to permit passage the drive bar turns 90°, and after passage returns to its original position.

Advantages:

- Bi-directional;
- High quality at a cost effective price;
- Integration with any type of access control and ID systems;
- Low power consumption;
- Whisper quiet, low noise operation;
- Possibility of gate opener customization;
- Wide range of accessories;
- Complete supply set as a standard;
- Fail safe.

BW-GATE-GS SLIM



BW-Gate-GS Slim gates offer single or dual direction control of pedestrian access. This swing turnstile has ultra thin tube (100 mm) equipped with light indication that glows depending on the passage mode. The primary purpose of the turnstile gate is single or dual direction control of pedestrian access for industrial premises, administrative establishments, banks, offices, shops, stations and other sites. Due to its unique shape and variety of models, it can suit any interior. BW-Gate-GS Slim range is easy to use, compact in size and feature a blade of glass in the swing gate. When receiving a command to permit passage the drive bar turns 90°, and after passage returns to its original position.

BW-SLIDE



BW-Slide speed gate with folding high gates is stylish original solution for your location that guarantees effective protection of the site. Slide speed gate could be easily fitted to any location: office centers, banks, hotels etc. The folding system of Slide gates has a more robust, reliable design compared to existing speed gates on market. The height of the flaps excludes the possibility of unauthorized passage, and also prevents the transfer of any objects.

Key features:

- BMDrive® - Reliable mechanism with powerful BLDC gear motor ensures long term maintenance free operation;
- The BMDrive® mechanism controller is equipped with an OLED display for easy setup and configuration without special programmers, also a full configuration and diagnostics is possible via a USB connector by using a service software for Windows OS;
- Digital control of force and leaf speed in combination with safety sensors prevent a passing person from being struck by a leaf, even in case of an unauthorized passage;
- By use of artificial intelligence algorithms and large number of high-precision infrared passage sensors, Slide speed gate detects and sounds the alarm when two people try to pass by one card, pass in the wrong direction and pass without authorization.

BW-JETPAN



BW-Jetpan is ideally suited for areas with unmanned security, as higher wings prevent vaulting over the turnstile. The **BW-Jetpan** is also fitted with optical sensors to prevent tailgating. The contemporary design, appearance and functionality makes the BW-Jetpan suitable for a variety of building entrances, such as **banks**, utility companies and commercial buildings.

- The speed gates have an ultra-modern futuristic design. Our speed gates of this series are ideal for stylish lobby interiors in hotels, banks, office centers, etc;
- BMDrive® Reliable mechanism with powerful BLDC gear motor ensures long term maintenance-free operation;
- Robust PinLock® locking system prevents from full leaves opening manually in case of vandalism;
- The smart self-diagnosing system of mechanism BMDrive® automatically analyzes the system, detects critical malfunctions, and records error log and warnings;
- The BMDrive® mechanism controller is equipped with an OLED display for easy setup and configuration without special programmers, also a full configuration and diagnostics is possible via a USB connector by using a service software for Windows OS.
- Digital control of force and leaf speed in combination with safety sensors prevent a passing person from being struck by a leaf, even in case of an unauthorized passage;



BW-Arg 40 - 60 – 80 Sensor barriers



Good design can be planned. The new Arg sensor barriers from **BLUE WEST** open the way to more freedom in form, color and function. They combine the options of a modern access system in the supervised entrance area in three models. From short basic versions to exquisite objects with sophisticated sensors, they offer a wide range of functions.

- Variable passage widths of 650 mm, 900 mm, 915 mm or 1,000 mm
- Variable door leaf heights of 990 mm, 1,200 mm, 1,400 mm, 1,600 mm, or 1,800 mm (upper edge)
- User-optimised scanner integration
- Discreet ambient lighting
- Smart emergency exit and escape route
- Secure separation sensors
- Efficient fixing type







BW-Arg HSB Sensor Barriers



Two product lines

The units in the Arg product range consist of a sensor-controlled passage with automatic door elements in various versions. They provide for convenient contactless passage, even with bags or luggage. The doors close again immediately once the person has passed through, preventing unauthorised passage. Depending on the way the door leaves open, the HSB or the HSG production lines can be selected.

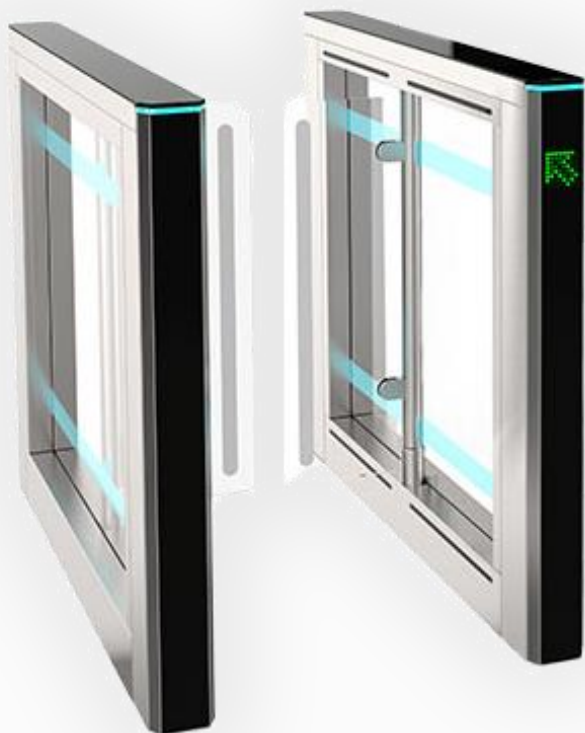
Arg HSB half-height sensor barriers

Tried-and-tested HSB half-height speed barriers are equipped with swing doors and can be configured individually thanks to the wide range of materials and finishes. Choose between a stainless steel housing or transparent glass side walls to match the design of your entrance area. Two different lengths of unit are also available with various sensors, offering different levels of security.





BW-SWEEPER S



Sweeper-S fuses together all advantages of Sweeper model and new engineering solutions. Redesigned housing is huge advantage among other turnstiles in speed gates series. The width of one side housing is just 110 mm makes it the slimmest and the most sophisticated model on the security market.

- The speed gates have an ultra-modern futuristic design. Our speed gates of this series are ideal for stylish lobby interiors in hotels, banks, office centers, etc;
- BMDrive® Reliable mechanism with powerful BLDC gear motor ensures long term maintenance-free operation;
- Robust PinLock® locking system prevents from full leaves opening manually in case of vandalism;
- The smart self-diagnosing system of mechanism BMDrive® automatically analyzes the system, detects critical malfunctions, and records error log and warnings;
- The BMDrive® mechanism controller is equipped with an OLED display for easy setup and configuration without special programmers, also a full configuration and diagnostics is possible via a USB connector by using a service software for Windows OS.
- Digital control of force and leaf speed in combination with safety sensors prevent a passing person from being struck by a leaf, even in case of an unauthorized passage;

BW-SWEEPER-HG



Tall version of speed gates model intended for applications where a higher degree of security is required. High swing glass leaves available up to 1800 mm from the floor. It helps to avoid transfer of anything above the turnstile, as well as overjumping it. Special design allows to arrange even 900 mm passage which can be used for people with special.



BW-SPEEDBLADE



BW-SPEEDBLADE – is a type of motorized turnstile featured with retractable flaps operation principle. Housing materials and light weight cabinets' shape make BW-Speedblade turnstile universal for large variety of facilities with heightened requirements to esthetic equipment appearance. As well as other **BLUE WEST** BW-speedgates, BW-Speedblade has implemented anti-tailgating function. Turnstiles can be operated from remote control panel or via access control system.

BW- SWEEPER-AL



Based on the BW-Sweeper and BW-Sweeper-HG models, the **BW-Sweeper-AL** is a bespoke system enabling you to order the system you need: two waist-height glass blades or two full-height glass blades or one of each. Also there is plenty of space for additional equipment such as access control systems or identification devices, which can be situated at the start and in the middle of the whole system. Also, additional post or holder for identification devices (IRIS reader, finger-print, face-recognition etc.) can be ordered. It can be single-passage only or multi-passage. Sweeper-AL pedestrian turnstile gate is ideally suited for use at different airports and Banks. When power goes OFF both directions are free.

PHYSICAL ACCESS CONTROL SOLUTIONS (OUTSIDE)



BW-AB30 AUTOMATIC BOLLARDS



BLUE WEST High security automatic bollards are designed to prevent unauthorized vehicles access to secure areas and to provide the highest level of antiterrorism protection. This type of equipment is installed at areas of high risk sites of heavy vehicle attack such as military infrastructures, government institutions, or public places (stadiums, fairgrounds) etc. High security bollards are installed in either single or multiple units with an external hydraulic station and PLC, connected via the hydraulic hoses. A separate push button control unit is supplied for manual control which is usually installed within the security office. This equipment can be easily integrated and interconnected with ACS and other vehicle access control equipment such as arm barriers.

BW-AB50 AUTOMATIC BOLLARDS



BLUE WEST BW-AB50 High security automatic bollards are designed to prevent unauthorized vehicles access to secure areas and to provide the highest level of antiterrorism protection. Generally, this type of equipment is installed at high risk sites where maximum protection to the public and assets are required. Typically, where there could be a high risk of heavy vehicle attack such as public places (stadiums, fairgrounds), government institutions, or military infrastructures etc. These bollards are installed in either single or multiple units with an external hydraulic station and PLC, connected via the hydraulic hoses. A separate push button control unit is supplied for manual control which is usually installed within the security office. Additionally, this equipment can be easily integrated and interconnected with ACS and other vehicle access control equipment (arm barriers etc.).

BW-AB40 SEMI AUTOMATIC BOLLARDS



BLUE WEST BW-AB40 high security fixed and removable bollards are the most cost-effective solution for preventing unauthorized vehicle access. **BLUE WEST** high security bollards correspond to the requirements for antiterrorism protection. Absence of necessity in service maintenance are the main features to be outlined. One of the greatest advantage related to its mobility, when free access is required. Advanced technologies and extensive manufacturing experience ensure that **BLUE WEST** high security fixed/removable bollards are durable easy to install and maintain.



BW CITY-LIGHT CYCLOPES



BLUE WEST City-light Cyclopes are an innovative part of the **BLUE WEST** range of traffic barriers. This type of equipment is designed to manage pedestrian friendly vehicle access control. Cyclopes does not require a deep installation depth. Depending on model type together with the foundation case and drainage pit, the installation depth is only 250 mm to 350 mm. This solution greatly simplifies the installation and service maintenance procedures. The combined features make Cyclopes an ideal solution for a multitude of projects.

BW-AC30 HIGH SECURITY CYCLOPE SERIES



BLUE WEST BW-AC30 high security Cyclopes ensure the highest level of anti-ramming protection. It was tested and certified according to ASTM F2656/F2656-15 and IWA14-1:2013 standards. The blocking segment is operated from an external control box with the HPU and PLC. Interconnection between the two elements is provided via the interconnected power and oil hoses. The equipment has been designed, engineered and extensively tested to maintain high intensity operations. A wide range of optional configurations enables the **BLUE WEST** high security Cyclopes to be an ideal security solution for a variety of projects under different environment conditions. This solution greatly simplifies the installation and service maintenance procedures. The combined features make Cyclopes an ideal solution for a multitude of projects.



BW CITY-LIGHT SPEEDBUMPS



BLUE WEST City Light Speedbumps are the most versatile in the vehicle blocker range. It offers the user the option to use as a permanent, semi-permanent or temporary solution. Its main advantage is that it can be installed above ground offering rapid deployment without the need for extensive groundworks. For a more permanent solution without the ramps the City Light Speedbump can be installed within a shallow pit. Operation in the raised position **BLUE WEST** City Light Speedbump works like a regular wedge barrier. When closed, it performs the function of a speed hump to slow traffic. The built-in hydraulic unit has the advantage for the PLC can be up to 100m between blocking part and the operator. There are different sizes available in the City-Light Speedbump range subject to the blocking width required. Other options and customized sizes can also be considered.

BW-AS30 HIGH SECURITY MOBILE SPEEDBUMPS



BLUE WEST High security Mobile Speedbumps are reliable compact solution to provide security of your territory. It does not require any installation to the ground.

High security Mobile Speedbump was tested and certified according to ASTM F2656/F2656-18a and IWA14-1:2013 standards.

Key advantages of Mobile Speedbumps M30:

- full mobility of crash-rated, automatic wedge barrier;
- easy application: setting up within 10 minutes: simply by delivering to the site → unloading → plug in to the power;
- no civil works required: no anchors/no bolts. High security Mobile Speedbump has warning LED indication and warning painting. Also can be interfaced with any ACS.

Ideal for organizing temporary protection of driveways during public events (fairs, festivals, weekly markets, public holidays etc.).

BOOM BARRIER



BLUE WEST automatic Boom Barriers are a fully automated solutions for controlling the access of cars to a protected area. Housing of boom barrier is available in different RAL colors. High speed of operation makes arm barriers providing high territory security. It should be installed nearby exit /entrance gates and operates in complex with a parking system devices to provide high security access.

THANK YOU FOR YOUR ATTENTION

FOR MORE TECHNICAL INFORMATION CONTACT US



Neuer Wall 71 c/o WorkRepublic 20354
Hamburg - Germany
+49 (0) 40 9999 9442-9
www.bluewest.de
info@bluewest.de



Sale office

Maslak 1453, Ticari T4b blok -7kat Daire
153, Sariyer-Istanbul
+90 850 305 930
info@bluewestmiddleeast.com