



BW BLUE WEST
GmbH

2022

**MEDICAL CENTERS
SOLUTIONS JOURNAL**

For impressive entrances
For high quality solutions
For many applications



ANTIMICROBIAL LEVER HANDLES

7

BDL-IN.03.100.TMS	8
Antimicrobial coating	10
BW-MicroShield	11

LEVER HANDLES

13

BDL-ASSA-ASL-040	14
BDL-ASSA-ASL-090	15
BDL-ASSA-ATL-060	17
BDL-ASSA-ATL-090	19
BDL-ASSA-ASL-010	21

DOOR CLOSERS

22

BDD-A340	23
BDD-1-775 BD	24
BDD-2-760 BSQ	26
BDD-21.550.BA	28

BALUSTRADES

32

ENTRANCE SYSTEMS

43

BW-S21	44
BW-S20	46
BW-DK-ES200	48
BW-ASSA-Unislide H	50
BWW-ASSA-SW300	52
BWW-DK-100 / 250	54

HEALTH CENTER ROOM DIVIDERS

56

BW-SCREENFLEX	57
BW-EasyClick	61

GLASS FITTINGS

64

BW DK-Double-action	66
BW DK-ROUND	69
BW DK-BEY	70
BW DK-TP/TA	74
BW DK-BG	76
BW DK-EA	77
BW DK-NET	78
Wall connecting profiles	81
BW DK-BR 22/28	82
BGF-DK-DMUN	83
BGL-DK-DRON	85
BGL-DK-DGAL	86
BGF-DK-DRP	88

ELECTRONIC CYLINDERS

89

BW-DK-Mechatronic cylinder	90
BW DK-digital cylinder	91

PULL HANDLES

93

BDP-4.07.286.A	94
BDP-4.07.205.A	96
BDP-4.07.204.A	97
BDP-4.07.201.V	98

**MASTER KEY
SYSTEMS**

99

HINGES

101

BDH-2.05.064	102
BDH-2.05.063.B	104
BGH-5.845E 10/20	107

**WALLS &
PARTITIONS**

109

BW-DS SLIDING DOOR	110
BW-DS POCKET SLIDING DOOR	112
BW-D1-80 HINGED DOOR	114
BW-DB HINGED DOOR	115
BW-D1S PIVOT DOOR	116
BW-DBS PIVOT DOOR	118
BW-MONOVOLUME DOOR	120
BW-MONOVOLUME SLIDING DOOR	122
M50 GLASS PARTITION	124
PIVOTING GLASS DOOR BW-SKD-75	125
SLIDING PANEL DOOR BW-SWV	128
BW TECHNICAL PANEL	131
BW FLEXIBLE WALL	133
BW FACADE	134
DISCRETION	135
BW SAFE	137

WC CABINS

138

**FIRE RATED
DOORS**

144

PANIC BARS

148

BDE-3.20.951.K1	149
BDE-3.20.952.K2	151
BDE-1.20.957	152
BDE-F1.20.945	154
BDE-1.20. 954.KIT	156
BDE-D2500	157

**ACCESS
CONTROL
DEVICES**

159

BW-OP-VID-PRO-RDR	161
BW-OP-VID-PRO-INT	163
BW-OP-R2-STND	165
BW-OP-R2-MULL	166

**PHYSICAL
ACCESS
SOLUTIONS**

167

BW-AC30	168
BOOM BARRIER	170



BLUE WEST is an exceptional German company, specialized in commercial security and access solutions. We develop, produce, assemble, and market a complete range of sophisticated top end products, oriented towards openings. We are committed to the highest standards of quality and reliability in offering architectural solutions.

We continuously developing our extensive product range and services in conjunction with our reputable international production partners to ensure our customers benefit from the very latest global innovations. Our main objective is offering the ideal entrance solutions or security for all market segments like residential, commercial and institutional complexes .

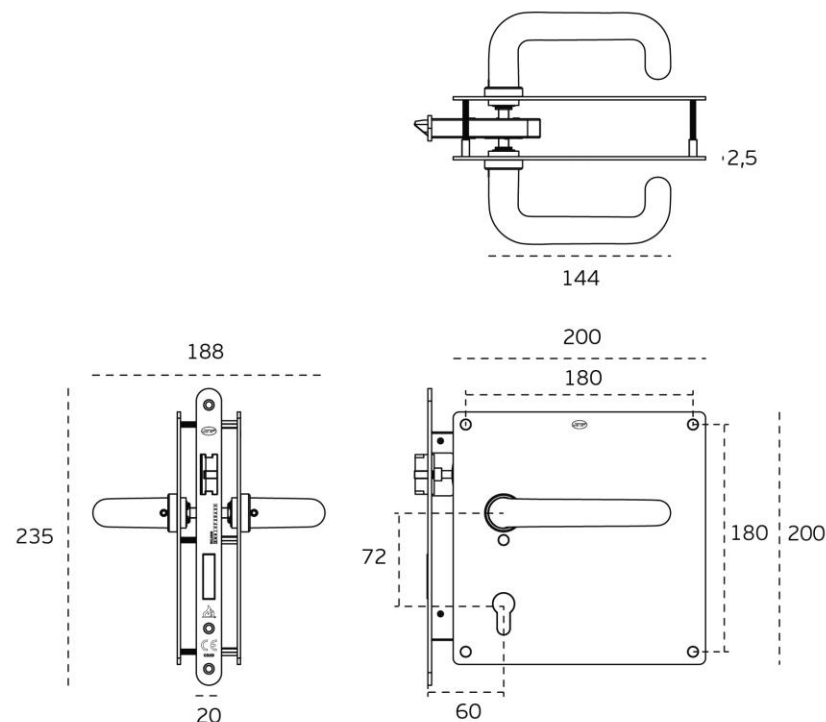
We additionally customize solutions for customer needs in addition to our standard range of products. Through our architectural consultancy and specification services we support our partners to receive the best applicable product with commercial value in mind.



ANTIMICROBIAL LEVER HANDLES



BDL-IN.03.100.TMS



ANTIMICROBIAL PLATE SET

Plate set developed for use in busy spaces with 5 points for fixing the plate to the door.

Set includes handle fixed to the 3mm plate (BDL-IN.00.270) with safety washer with anti-friction polymer and mortise door lock for European cylinder for doors with heavy use grade 3 (BDL-IN.20.995) with CE certification and fireproof protection.

This plate set has an **antimicrobial** finish.

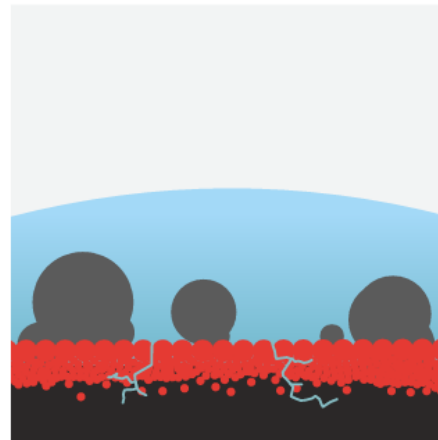


Antimicrobial coating– for secure and hygienic entry into rooms and buildings.

Hygiene is of paramount importance today. This is non-negotiable. The need to access a door with in a physical touch sometimes may be inevitable building or a facility. A challenge to maintain hygiene today, touch becomes sacred to everyone accessing a door by touching the hardware. As a pioneer in providing touch-free access solutions, BLUE WEST now introduces antimicrobial protection as a preventive measure wherever touch is essential to access a door. Varied door hardware applications like door lever handles or a panic exit devices that frequently require physical operation can be protected from being a source of infection spread. This specialised antimicrobial coating can be widely used in such hardware and supports the need to have a solution for secure, hygienic and safe entry into rooms.

What is technology? the coating

The antimicrobial coating works at a cellular level to continually disrupt the growth and reproduction of microorganisms that contaminate a treated surface. The technology operates a multi-modal attack by damaging the protein, cell membrane, DNA and internal systems of a microbe, causing it to die. This coating allows for a cleaner surface in between physical cleaning.



Uncoated



Coated

BW-MicroShield Antimicrobial Coating

BW-MicroShield uses proven silver ion-based technology from Agion®, a leading provider of antimicrobial solutions, to stem the spread of bacteria and other microbes.

The Challenge:

The hardware on highly-trafficked door openings in buildings is a prime location for bacteria and other microbes. Door pulls, levers and exit devices are touched continuously by people going in and out. Organisms can live on these surfaces for hours.

The Solution:

To assist with reduction of these organisms, BLUE WEST Group companies offer MicroShield®, an antimicrobial coating for door hardware. MicroShield uses proven silver ion-based technology from Agion®, a leading provider of antimicrobial solutions, to stem the spread of bacteria and other microbes. MicroShield is effective against a broad range of:

- Bacteria
- Mold
- Fungi
- Algae
- Mildew



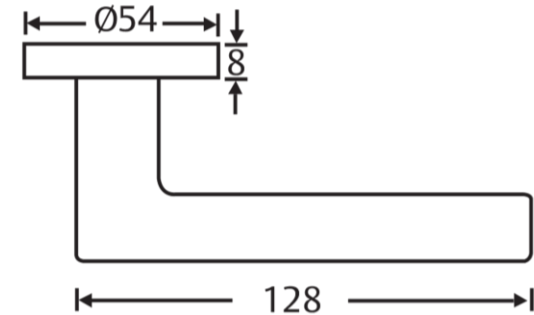


LEVER HANDLES



BDL-ASSA-ASL-040

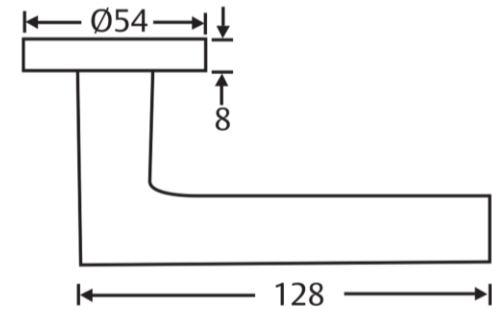
Solid Stainless Steel Lever Handle on Rose

**Specifications**

- Dimensions: Length - 128mm
- Spindle: 8mm x 8mm Straight Spindle Standard
- Round Rose: Ø54mm x 8mm
- Finish: Satin Stainless Steel - US32D
- Can cover with **Anti Bacterial Coating**
- Door thickness required from 30mm - 50mm
- Spindle - 8mm x 8mm
- Suitable for hinged timber, metal doors
- All leversets come complete with two euro cylinder escutcheons
- Rose are designed to fit back to back and fixing are concealed by the use of a slip on outer rose
- Finish SSS - US32D

BDL-ASSA-ASL-090

Solid Stainless Steel Lever Handle on Rose

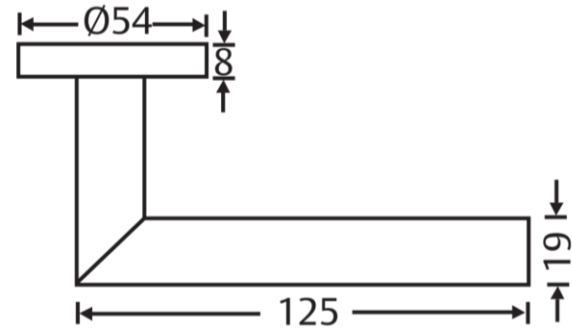
**Specifications**

- Dimensions: Length - 128mm
- Spindle: 8mm x 8mm Straight Spindle Standard
- Round Rose: Ø54mm x 8mm
- Finish: Satin Stainless Steel - US32D
- Can cover with **Anti Bacterial Coating**
- Door thickness required from 30mm - 50mm
- Spindle - 8mm x 8mm
- Suitable for hinged timber, metal doors
- All leversets come complete with two euro cylinder escutcheons
- Rose are designed to fit back to back and fixing are concealed by the use of a slip on outer rose
- Finish SSS - US32D



BDL-ASSA-ATL-060

Tubular Stainless Steel Lever Handle on Rose

**Specifications**

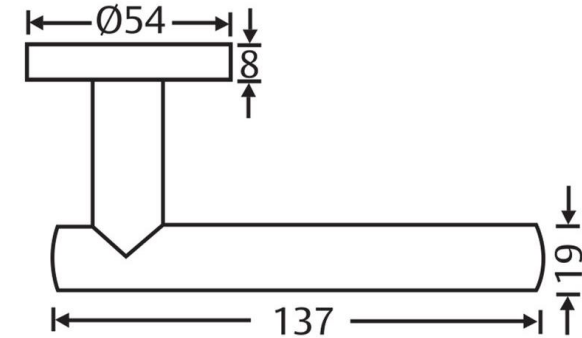
- Dimensions: Length - 125mm
- Spindle: 8mm x 8mm Straight Spindle Standard
- Round Rose: Ø54mm x 8mm
- Finish: Satin Stainless Steel - US32D
- Can cover with **Anti Bacterial Coating**
- Door thickness required from 30mm - 50mm
- Spindle - 8mm x 8mm
- Suitable for hinged timber, metal doors
- All leversets come complete with two euro cylinder escutcheons
- Rose are designed to fit back to back and fixing are concealed by the use of a slip on outer rose
- Finish SSS - US32D



BDL-ASSA-ATL-090



Tubular Stainless Steel Lever Handle on Rose



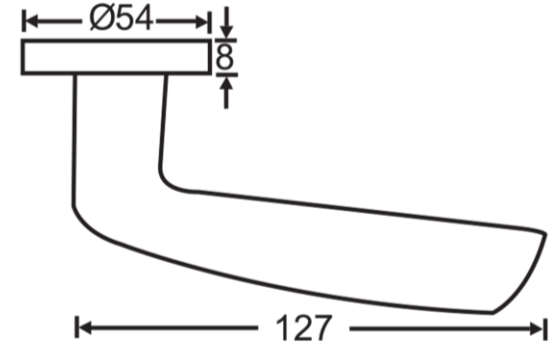
Specifications

- Dimensions: Length - 137mm
- Spindle: 8mm x 8mm Straight Spindle Standard
- Round Rose: Ø54mm x 8mm
- Finish: Satin Stainless Steel - US32D Can cover with
- Can cover with **Anti Bacterial Coating**
- Door thickness required from 30mm - 50mm
- Spindle - 8mm x 8mm
- Suitable for hinged timber, metal doors
- All leversets come complete with two euro cylinder escutcheons
- Rose are designed to fit back to back and fixing are concealed by the use of a slip on outer rose
- Finish SSS - US32D



BDL-ASSA-ASL-010

Solid Stainless Steel Lever Handle on Rose

**Specifications**

- Dimensions: Length - 127mm
- Spindle: 8mm x 8mm Straight Spindle Standard
- Round Rose: Ø54mm x 8mm
- Finish: Satin Stainless Steel - US32D
- Can cover with **Anti Bacterial Coating**
- Door thickness required from 30mm - 50mm
- Spindle - 8mm x 8mm
- Suitable for hinged timber, metal doors
- All leversets come complete with two euro cylinder escutcheons
- Rose are designed to fit back to back and fixing are concealed by the use of a slip on outer rose
- Finish SSS - US32D

DOOR CLOSERS



Heavy duty electromagnetic hold open: BDD-A340

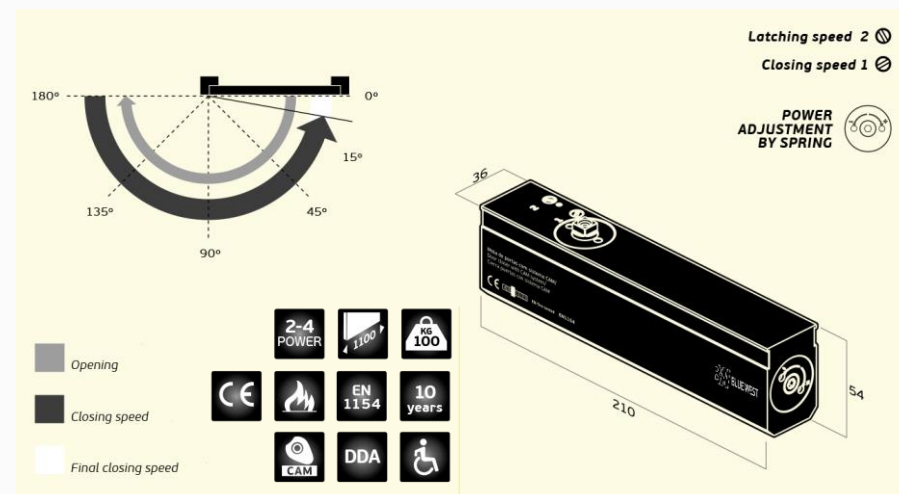


An electromagnetic hold open guide rail door closer for commercial and public access use. The hold-open function enables a fire door to be held open whilst in normal use, until activation of the fire alarm when the door closes. This closer is designed to be professionally installed into the building's fire alarm system.

Specification:

- Rack and pinion closer with link arm L190
- Certified in compliance with EN 1154, size 36
- Suitable for fire and smoke protection doors
- For single action doors up to 1400 mm wide
- Can be used with integrated concealed mounting plate,
- suitable for fire and smoke protection doors
- Can be used for left and righthanded doors
- Link arm height adjustable up to 14mm
- Closing speed, latching speed and backcheck adjustable
- via front facing regulating valves
- Thermodynamic valves for consistent performance
- Variable adjustable closing force
- Opening angle up to 180°
- Effective backcheck and latching speed range adjustable
- Large range of applications

CAM ACTION DOOR CLOSER : BDD-.21.813



Details

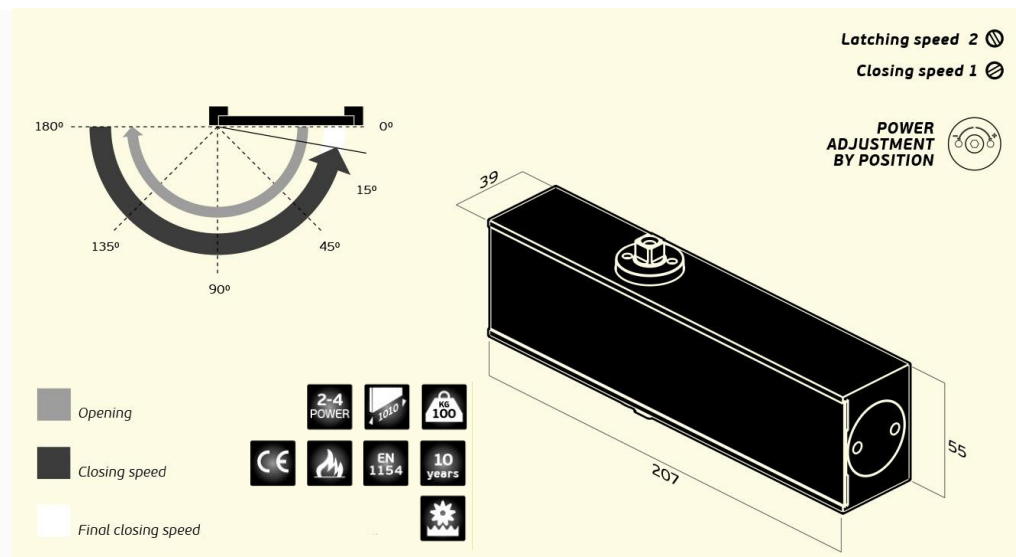
Door closer type	Hydraulic overhead door closer
Arm type	Sliding Arm
Adjustable Power	2 - 4
Maximum door width	1100 mm
Maximum door weight	100 Kg
Power adjustment	by spring
Mechanism	CAM action

Details

closing speed adjustable	by valve
Latching speed adjustable	by valve
Opening angle	180 °
Reversible door closer	YES
Certified Fire proof	YES
CE marking	YES



CAM ACTION DOOR CLOSER : BDD-2-760 BSQ



Details

Door closer type	Hydraulic overhead door closer
Arm type	Standard arm without retaining
Adjustable Power	2 - 4
Maximum door width	1100 mm
Maximum door weight	80 Kg
Power adjustment	by position
Mechanism	Rack and Pinion

Details

closing speed adjustable	by valve
Latching speed adjustable	by valve
Opening angle	180 °
Reversible door closer	YES
Certified Fire proof	YES
CE marking	YES



BDD-21.550.BA



HYDRAULIC OVERHEAD DOOR CLOSER FREELINE WITH SLIDING ARM - FIXED POWER: 3

Features

- Hydraulic overhead door closer
- Standard arm without retaining
- Fixed Power: 3
- Maximum door width: 1000 mm
- Maximum door weight: 60 kg
- Rack and pinion mechanism
- closing speed adjustable by valve
- Latching speed adjustable by valve
- Opening angle 180 °
- Reversible door closer

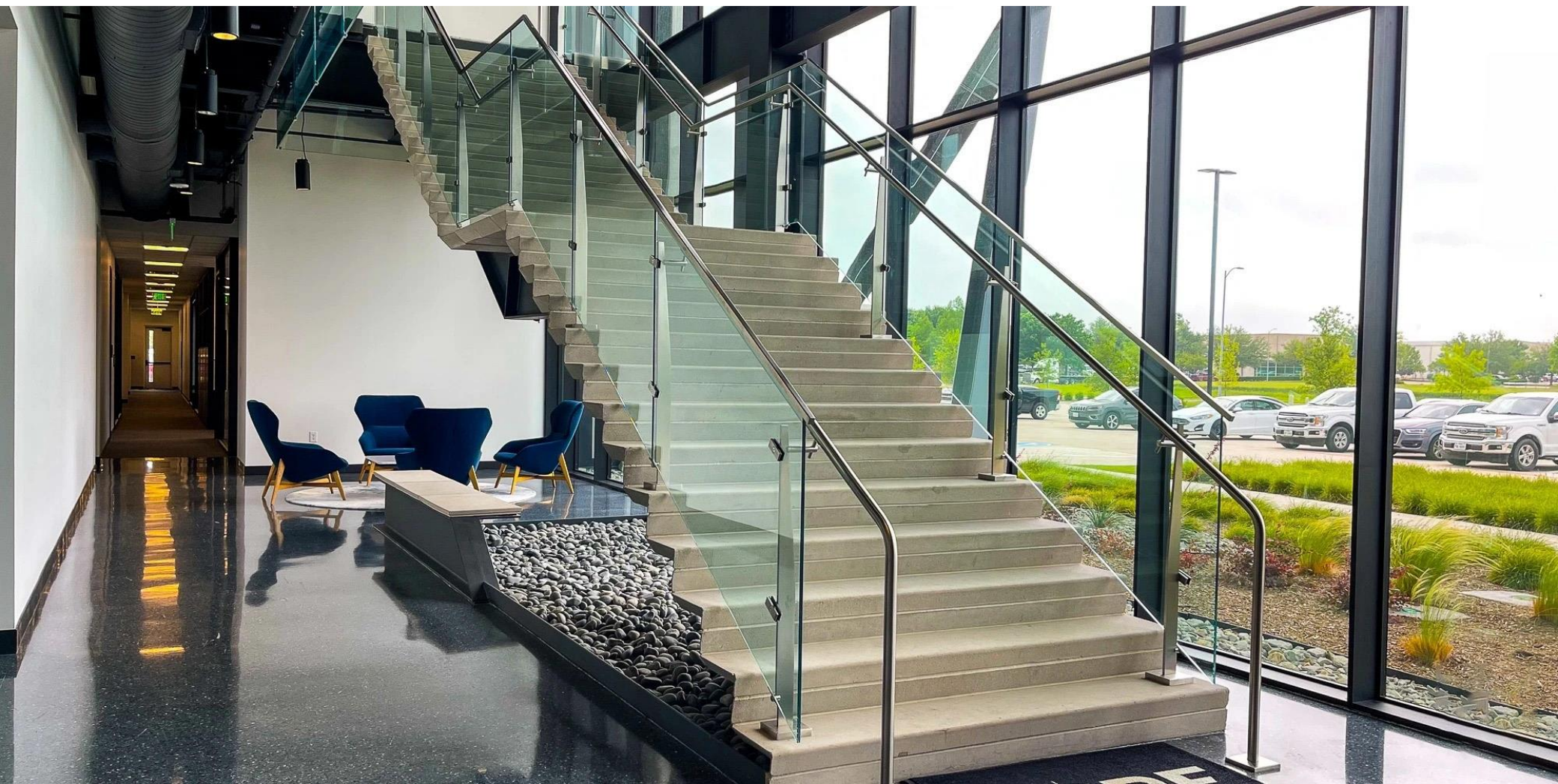






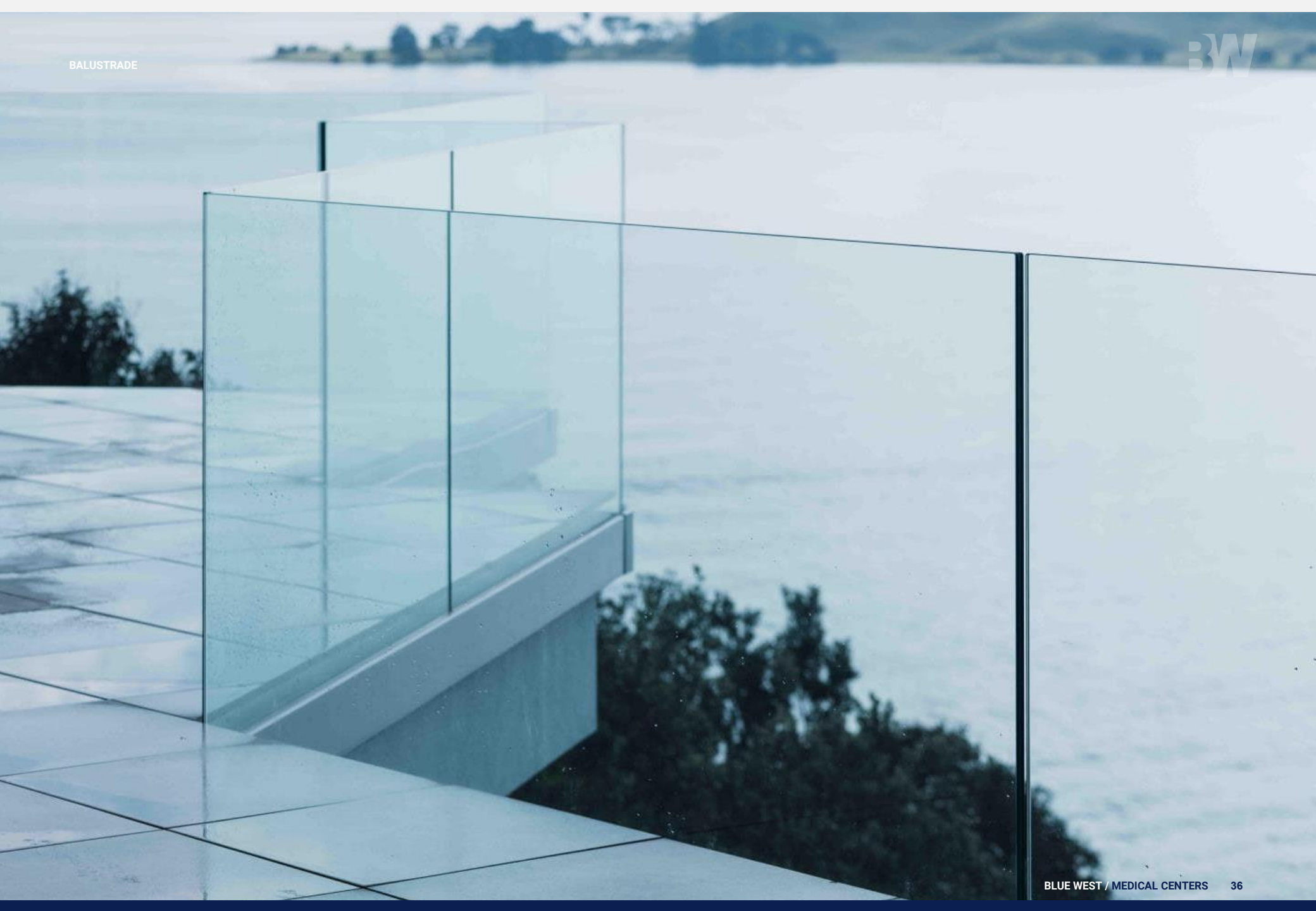
BALUSTRADES

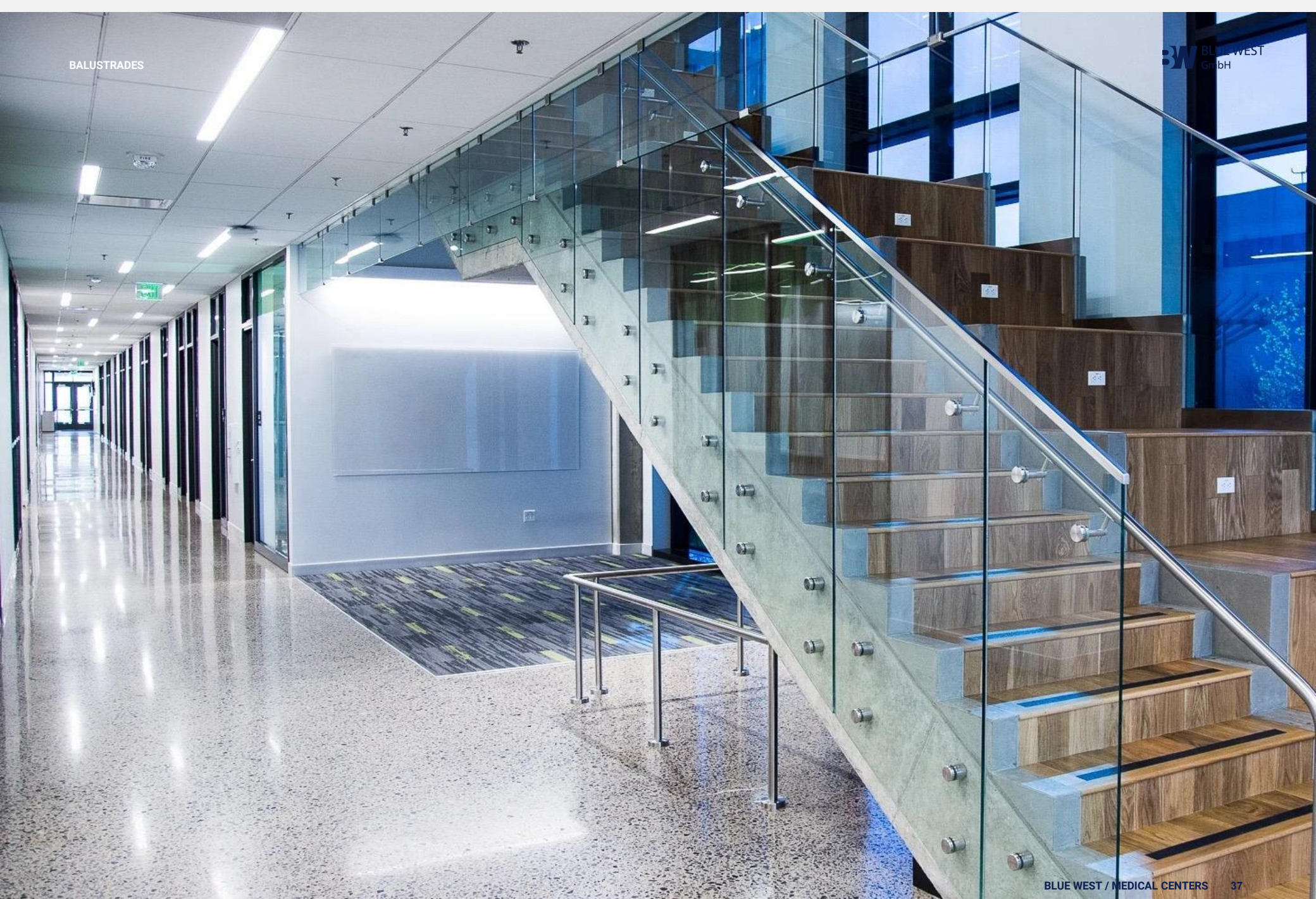


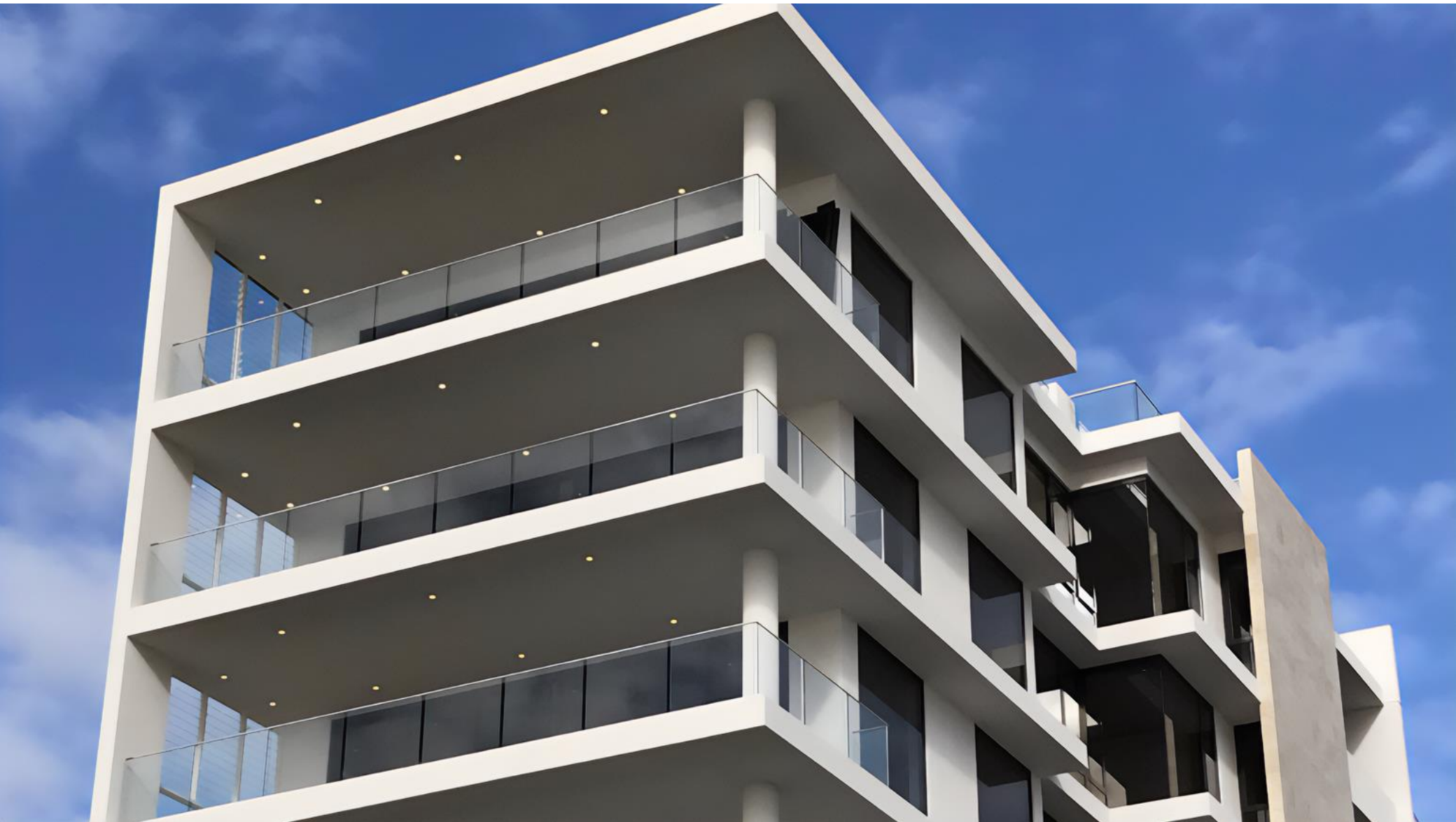






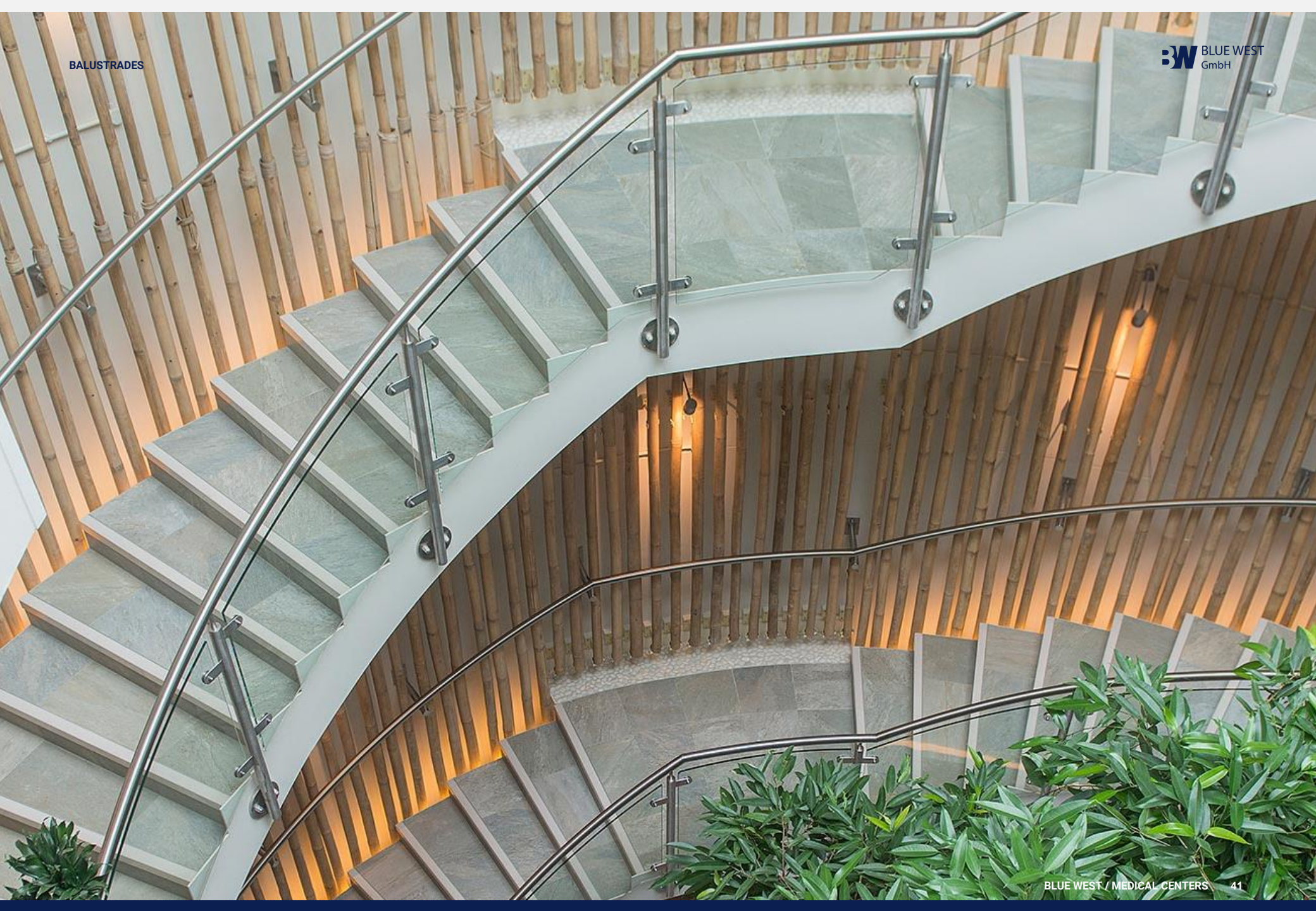








2





ENTRANCE SYSTEMS



BW-S21

Highly efficient and attractively designed automatic sliding doors product line BWS for exterior and interior.

Door Functions

- The doors can be left completely open
- The doors can be left completely closed
- Cancellation of one of the inner or outer radars
- Keeping the door 70 % open (winter position)
- Position Switch (Manual / Auto, single / double, on / off, full / half opening)

Activators

- Remote control (Standard)
- Safety Sensor (Standard)
- Active or passive microwave sensors (Standard)
- Fingerprint control (optional)
- Coded keypad and proximity (optional)

Optional Requests

- All anodized colors
- Stainless steel profiles and coating
- Different optional glass and color alternatives

Details

Door parameters

Single-panel sliding door	– Clear passage width LW	800 – 3000 mm
	– Door panel weight, max.	1 x 150 kg

Double-panel sliding door	– Clear passage width LW	800 – 3000 mm
	– Door panel weight, max.	2 x 120 kg

Clear passage height*	2100 – 3200 mm
-----------------------	----------------

Technical data of operator

Motor Type	Brushless Dc motor
Height	8 - 12 cm
Installation depth	15 cm
Opening speed (incremental setting)	15 - 65 cm / s (single wing) 15 - 55 cm / s (double wing)
Closing speed (incremental setting)	10 - 45 cm / s (single wing) 10 - 43 cm / s (double wing)
Supply voltage, frequency	AC 80 V - 250 V (50 / 60 Hz)
Power consumption	70W
Class of protection	IP 54
Compliant with EU - Low Voltage Directive and EMC Directive	YES
Manufactured to ISO 9001	YES
Reliable activation and protection in automatic doors, with EN 16005 standard	YES





BW-S20

Product line BWS and its modern drive integrate into every building and meet the needs of even the most demanding users. Stylish, efficient and easy to use.

Door Functions

- The doors can be left completely open
- The doors can be left completely closed
- Cancellation of one of the inner or outer radars
- Keeping the door 70 % open (winter position)
- Position Switch with Digital LCD Display (Manual / Auto, single / double, on / off, full / half opening)
- SHOWING ERROR CODES

Activators

- Remote control (Standard)
- Safety Sensor (Standard)
- Active or passive microwave sensors (Standard)
- Fingerprint control (optional)
- Coded keypad and proximity (optional)

Optional Requests

- All anodized colors
- Stainless steel profiles and coating
- Different optional glass and color alternatives

Details

Door parameters

Single-panel sliding door	<ul style="list-style-type: none"> – Clear passage width LW – Door panel weight, max. 	800 – 3000 mm 1 x 150 kg
Double-panel sliding door	<ul style="list-style-type: none"> – Clear passage width LW – Door panel weight, max. 	800 – 3000 mm 2 x 120 kg
Clear passage height*		2100 – 3200 mm

Technical data of operator

Motor Type	German 63X55 Dunker Brushed DC Motor
Height	8 - 12 cm
Installation depth	15 cm
Opening speed (incremental setting)	3350 Rpm
Supply voltage, frequency	AC 230V (50Hz) ± 5%
Power consumption	100 W
Class of protection	IP 54
Admissible temperature	-15 ° C to + 50 ° C
Digital LCD Display for error codes	YES
Compliant with EU Low Voltage Directive and EMC Directive	YES
Manufactured to ISO 9001	YES
Reliable activation and protection in automatic doors, with EN 16005 standard	YES





BW—DK-ES200

The new, innovative BWS-ES200 SLIDING DOOR OPERATOR system offers the perfect solution for all applications and service requirements.

Door Functions

- The doors can be left completely open
- The doors can be left completely closed
- Cancellation of one of the inner or outer radars
- Keeping the door 70 % open (winter position)
- Position Switch with Digital LCD Display (Manual / Auto, single / double, on / off, full / half opening)
- SHOWING ERROR CODES

Activators

- Remote control (Standard)
- Safety Sensor (Standard)
- Active or passive microwave sensors (Standard)
- Fingerprint control (optional)
- Coded keypad and proximity (optional)

Optional Requests

- All anodized colors
- Stainless steel profiles and coating
- Different optional glass and color alternatives

Details

Door parameters

Single-panel sliding door	– Clear passage width LW	700 – 3000 mm
	– Door panel weight, max.	1 x 200 kg

Double-panel sliding door	– Clear passage width LW	800 – 3000 mm
	– Door panel weight, max.	2 x 160 kg

Clear passage height*	2100 – 3200 mm
-----------------------	----------------

Technical data of operator

Height	100 and 150 mm
Installation depth	180 mm
Opening speed (incremental setting)	10 – 70 cm/s
Closing speed (incremental setting)	10 – 50 cm/s
Hold-open time	0 – 180 s
Supply voltage, frequency	230 V, 50/60 Hz
Power consumption	250 W
Class of protection	IP 20
Compliant with EU Low Voltage Directive and EMC Directive	YES
Manufactured to ISO 9001	YES
Environmental product declaration in accordance with ISO 14025	YES





BW-ASSA-Unislide H

BLUE WEST Unislide H Hermetic sliding door system - hygiene control in controlled environments.

The **BLUE WEST** ASSA-Unislide H Hermetic sliding door system is specially designed for use in areas where clean, hygienic, tight-sealing doors are required. Powered by the **BLUE WEST** SL540 operator, it provides an airtight sealed entrance for clean room type environments such as operating theatres, pharmaceutical production facilities, food preparation facilities and laboratories.

The hermetic sliding door system is specially designed for use in areas where clean, hygienic, well-sealing doors are required. Powered by a high performance **BLUE WEST** ASSA-Unislide H operator, it provides an airtight sealed entrance for clean room environments such as operating theatres, pharmaceutical production facilities, food preparation facilities and laboratories.

Details

- Power supply: 120 V AC -10% to 240 V AC +10%; 50/60 Hz
- Power consumption max.: 250 W
- Recommended max. door weight: 200 kg
- Clear opening: 800 – 2500 mm
- Opening and closing speed variable: up to 0.7 m/s
- Hold open time: 0 – 60 s
- Ambient temperature: -20°C to +50°C
- Relative humidity(non-condensing): 5% to 85%



BWW-ASSA-W300

BLUE WEST SW300 Slim Swing Door Operator.



The BLUE BWW-ASSA-W300 is an intelligent, heavy-duty electromechanical swing door operator with an attractive slim 70 mm design. It provides low noise during operation and it is the ideal choice for applications with high demands on gentle and smooth operation in combination with strength and high traffic flow.

It compensates for stack pressure and wind load and yet remains easy to open manually. It is the ideal choice for heavy traffic flow entrances in healthcare, residential, office and public service environments where both low noise and ease of access are important.

BLUE WEST BWW-ASSA-W300 provides a unique double-acting solution giving panic break-out in both directions with automatic reset. An optional embedded battery back-up

and monitoring ensures operation even when the power is interrupted, while an intelligent locking function adds security.

BLUE BWW-ASSA-W300 is suitable for applications such as: low-energy and heavy-duty, interior and exterior entrances, single- and double-leaf doors, push and pull applications, fire doors (depending on national regulations), escape routes with optional panic break-out in both directions with automatic reset, and smoke evacuation through inverse functionality.

Safety compliance

The BWW-ASSA-W300 complies with EN 1634-1, DIN 18263-4, EN 16005 and EN 1158.

Details

- Power supply: 100-240 VAC +10/-15%, 50/60 Hz, mains fuse max. 10A (building installation)
- Power consumption max.: 300 W
- Auxiliary voltage: 24 V DC, max. 700 mA
- Monitored battery backup unit: 24 V DC
- Electromechanical locking connection: 12 V DC, max. 1200 mA or 24 V DC, max. 600 mA
- Ambient temperature: -20 °C to +45 °C
- Relative humidity (non condensing) 95%
- Recommended max. door weight and door width Inertia J: PUSH = 140 kgm² and PULL = 80 kgm²
- Class of protection IP20
- Integrated coordination unit for double fire doors





BWW-DK-100 / BWW-DK-250

The BWW-DK-100/250LE is an elegant electromechanical swing door operator ideal for room access and assistance on demand for various fields of application. The 'Wind Load Control' function is ideal for windy sites compensating for heavy wind loads. Suitable for emergency escape routes as well as use **on fire and smoke check doors**.

Benefits

- Flexible configuration: Customers only pay for the functions they actually require
- Inexpensive transportation and easy mounting thanks to the system's reduced weight
- Low-noise unit thanks to multi-stage gear
- Elegant visual appearance: BLUE WEST Contour design provides for an operator height of only 70 mm
- Various functions included as standard
- Field of application.
- For single- or double-leaf swing doors
- The pull version with slide channel and the push version with standard arm are both suitable for use on fire and smoke doors
- Thanks to its low- and full-energy versions, the system is suitable for automating both rarely and heavily frequented internal and external doors

- High torque for fully automatic swing doors with radar motion detector actuation

Features

Modular design and variable functional range
Automatic operation with "Wind Load Control"
Suitable for use on emergency escape and fire doors

Tested to 1,000,000 cycles

ED 100 - Door weights up to 160kg, door widths up to 1100mm

ED 250 - Door weights up to 400kg, door widths up to 1600mm

New: with integrated smoke detector

For single- and double-leaf swing doors

Details

Module

Operator

A compact and powerful unit.

Choose one of the following operator systems according to your individual door-leaf parameters:

BWW-DK-100

EN 2–4 for door widths of 700 – 1,100 mm and a maximum door weight of 100 kg.

BWW-DK-250

EN 4–6 for door widths of 700 – 1,600 mm and a maximum door weight of 250 kg

BRC radio system

Easily operable via pushbutton.

BRC-R receiver

The receiver can easily be integrated in the standard operator.

BRC-H

hand-held transmitter Bi-directional system in new design.

BRC-W wireless wall transmitter (pushbutton-type)

Extra slim design, suitable for surface mounting.

BRC-T transmitter

Easy installation in commercial pushbuttons



agency

**outpatients
arrival kiosk**

Welcome
Please scan your letter



Please hold the barcode
here for scanning

HEALTH CENTER ROOM DIVIDERS



BW-SCREENFLEX / BW-HEALTHFLEX

BW-SCREENFLEX offers a dozen product lines in up to 38 colors. Our standard line is our most popular. Many medical facilities seek our BW-HEALTHFLEX portable room dividers, as we apply an antimicrobial agent to the fabric. This same agent is built directly into the vinyl coverings we offer. Vinyl is also easy to clean.

Our dividers also limit distractions and create quieter environments with sound-absorbing panels. They offer much-needed separation in spaces, too. We're seeing hospital staff wanting to create division with vision. Major hospitals turn to us, too, including Rush University Medical Center in Chicago, who recently used our room dividers to create more spaces for staff to check-in privately with patients. Using BW-SCREENFLEX anyone can create a custom space quickly—something you wouldn't be able to do with more permanent but movable wall solutions in a large room with high ceilings.









BW-EasyClick

You can easily create a room within a room. BLUE WEST's fixed privacy screens are the perfect medical room dividers. They can be attached to both wall and floor poles. The BW-EasyClick™ concept makes removing and re-installing easy with just one click. A wall-mounted screen can be mounted on a trolley for a mobile room divider or to any other BLUE WEST component. All screens are equipped with the BW-EasyClick function making mobility one click away.







GLASS DOOR FITTINGS AND ACCESSORIES





BW Double-action Door Hinge



The BW double-action door hinge offers particular convenience. And all the more so where the door is returned to the desired closed position by the action of the hinges alone – without any need for a recessed floor spring or an overhead door closer.

- Effortless opening and closing of swing doors
- Excellent returns from every angle
- TÜV-tested/third-party verification
- Easy installation



BW Double-action Door Hinge



BW ROUND DOUBLE-ACTION GLASS DOOR SYSTEM



The patented ROUND double-action door system keeps glass double-action doors completely clear from visually disruptive functional elements. The fitting components do not appear in the door leaf's clear outlined area; rather, they are stored in the surrounding structures. As a result, the fitting is not the main focus, but rather absolute door transparency. Even smaller rooms become really large – a big win for interior architecture.

- High level of transparency
- Independently choose the room's color and material
- High durability thanks to sophisticated technology
- No need for a door frame

BW BEY Anti-Pinch Swing Door System



BEY, a secure, functional, unique and design-oriented system for swinging glass doors without jamming. The BEY swing door's patented system with its pivot point positioned in the middle of the glass axle ensures safety. BEY opens up numerous opportunities to integrate frameless glass doors in toughened glass assemblies or wall openings. The option to choose between an elegant, continuous rotating rod and the short rod solution makes the technology "acceptable" for any room situation.

- Secure, safe and functional
- Continuous rotating rod does not jam
- Prevents the risk of trapped fingers
- No need for a door frame
- High level of transparency due to low metal fitting size
- Flexible application for many different door situations



BW BEY Anti-Pinch Swing Door System





BW TP/TA Door Rails



The TP/TA door and side panel rails coordinate with all BLUE WEST patch fittings in terms of design, dimensions and the finishes available.

- For heavy-duty and wide doors
- Special security and quality features
- Easy door adjustment
- Reliability built in
- Short delivery times



BW BG Lock System



It doesn't matter what sort of glass door needs securing, what function it has to fulfill, or the type of fittings specified – there will be a lock in the BLUE WEST BG range that will provide the shape, the function and the finish you require.

- For heavy-duty and wide doors
- Special security and quality features
- Easy door adjustment
- Reliability built in
- Short delivery times

BW EA Patch Fittings



EA patch fittings are characterized by their slim, neat shape and sophisticated hinge design. This comprehensive range of fittings maximizes the transparent elegance of single-action doors – whether hung in frames or integrated in toughened glass assemblies.

- Easy glass preparation, secure fixing
- Suitable for 8, 10 and 12 mm glass thicknesses
- Reliability built in
- Matching range of locks
- Virtually unlimited choice of colors and finishes
- Short delivery times

BW EA Patch Fittings



BW NET toughened glass assemblies



NET impresses with its distinctive design: point-fixed in stainless-steel. This elegant solution underscores the spaciousness of transparent architecture and relies on high flexibility. As a result, special formats in very special architecture can also be implemented in addition to doors and conventional toughened-glass systems.

- Great flexibility and wide variety
- No need for a door frame
- Glass elements are easy to install with custom fit
- Uniform stainless-steel design for sliding and revolving doors



BW Wall connecting profiles



The wall connecting profiles seal toughened-glass designs to the wall, ceiling and floor in a clean, elegant manner and ensure secure support for side parts and roof lights. Many different materials such as aluminum, brass, stainless steel and many different surfaces offer a premium and attractive look.

- Designed for toughened safety glass
- Glass thickness 8 - 19 mm
- Door weight: 15 kg per clamp
- Material: Aluminum, brass, stainless steel
- Surface: Anodized and RAL colors, brass, stainless steel
- Easy mounting

BW BR 22/28 Frame System



The BR 22 and BR 28 frame solutions comprise a frame profile (standard-drilled holes), a clamping profile and two contact rubber profiles (PVC, transparent). The frames are suitable for both interior and exterior applications.

- Elegant solutions for interior and exterior applications
- Easy to install
- Straightforward removal and re-installation
- Can be combined with sash bar profiles

BGF-DMUN



- Clear design lines, no visible fixings
- Wide range of surface finishes, colours and materials
- Particularly easy to install: Many BGF-DMUN fittings can be mounted on the glass and fixed into place in their as-delivered condition
- Fast installation, simple in-situ adjustment of the installed system
- set up for the right glass thickness: adaptable to different glass thicknesses without the need to change gaskets
- Improved load-bearing performance and more secure hold thanks to high-strength materials (screws and threaded sleeves of high-grade stainless steel capable of absorbing high clamping forces)
- Use of laminated safety glass (LSG) using BLUE WEST's proven Clamp&Glue technology for high quality and safety demands (BGF-DMUN Premium)

	BGF-DMUN Premium	BGF-DMUN Comfort
Max. load-bearing capacity	200 kg	150 kg
Max. panel width	1,300 mm	1,100 mm
Possible glass thickness	8 – 12 mm 12 – 15 mm 15 – 19 mm 19 – 22 mm	8 – 12 mm
Supported pivot points in mm	55, 65, 70 mm	55, 65, 70 mm
Offset adjustability in mm	Infinite (± 3 mm); 52 – 73 mm	Infinite (± 3 mm); 52 – 73 mm
Adjustability of the door/insert	Multi-dimensional	Multi-dimensional
Cover materials	Stainless steel, aluminum, glass etc	Stainless steel, aluminum



BGL-DRON



- Lock insert with low-noise “whisper” functionality as standard. The whisper latch (study metal latch
- partially plastics-sheathed and damped latch motions for noise minimisation) satisfy particularly high expectations. Adjustable lever handle follower $+1,5^\circ / -1^\circ$, patent pending, for avoidance of “lever
- handle sag” (droop). Further on a special spring supported clamp follower holds the lever handle perfectly secure.
- The fully closed lock case provides optimum protection for the internal components which themselves are of rugged unit construction.
- Locks comply to the current DIN EN 12209.
- Moreover these locks were tested successfully by a neutral testing institute with 200,000 latch and 200,000 locking bolt operating cycles

BGL-DGAL



- Lock insert with low-noise “whisper” functionality as standard. The whisper latch (study metal latch – partially plastics-sheathed and damped latch motions for noise minimisation) satisfy particularly high expectations. Adjustable lever handle follower +1,5° / -1°, patent pending, for avoidance of “lever handle sag” (droop). Further on a special spring supported clamp follower holds the lever handle perfectly secure.
- The fully closed lock case provides optimum protection for the internal components which themselves are of rugged unit construction.
- Locks comply to the current DIN EN 12209.
- Moreover these locks were tested successfully by a neutral testing institute with 200,000 latch and 200,000 locking bolt operating cycles



BGF-DRP



The popularity of concealed overhead closers has led BLUE WEST to furnish fully fabricated headers for every door and sidelite configuration. The RP Header System, which incorporate RTS overhead concealed door closers, offer the perfect solution for those who prefer the aesthetic advantages of a concealed closer.

- Modular system
- Innovative design and quality material
- RP Header System incorporates concealed overhead door closer
- Special damping system to protect the door against unwanted impact
- Integral hold open function

Features

BLUE WEST RP Patch Fittings with transom closer.

The BLUE WEST RP pivot door system works with a tubular transom profile in which the BLUE WEST RTS transom closer is integrated and concealed.

Attaches the all-glass door to the closer

This BLUE WEST RTS transom closer not only returns the door to the zero position each time it is opened, it also has a special damping system to protect the door against unwanted impact caused by over aggressive opening. In addition, the integral hold open, which also comes as standard, enables the door to be held open at an angle of 90°.

Innovative design and quality material

The popularity of concealed overhead closers has led BLUE WEST to furnish fully fabricated headers for every door and sidelight configuration.

Benefits for the architect/specifier

The perfect solution for those who prefer the aesthetic advantages of a concealed closer

Benefits for the trade/distributor

Applications

For indoor use, e.g.

- Doctor's offices
- Hotel rooms
- Office rooms
- Private residences



ELECTRONIC CYLINDERS



BW – DK-Mechatronic cylinder



BLUE WEST mechatronic cylinders bridge the gap between electronic access control and the world of mechanics. As part of the tried-and-tested **BLUE WEST** evolo portfolio, they can be seamlessly integrated into existing mechanical master key systems. A whole world of new possibilities is now available, thanks to the combination of mechanical cylinders and electronic access control. The key can be programmed very quickly – and programming can be removed just as fast too. Plus, access rights can be controlled in relation to both time and location. The smart key, which is equipped with an RFID chip, opens doors with both mechanical and mechatronic cylinders.

The range includes versions with surface fixed housing and compact cylinder, as well as double, thumbturn and single cylinders, in which the electronic module is built into the door leaf.

BW DK-digital cylinder



These are lifestyle cylinder locks with both visual and acoustic access signals. They are compact, energy efficient and extremely easy to install. The many different versions offer a solution for every door.

Features

- Can be installed in any door made of wood, glass or metal
- Suitable for installation in fire doors
- Increased drill protection for enhanced security
- Award-winning modern design
- Available in black or white
- Modular design - On-site length adjustment possible



PULL HANDLES

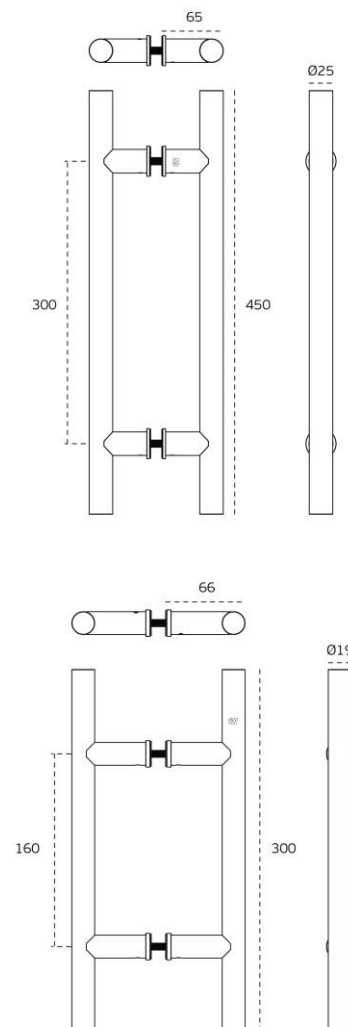


BDP-4.07.286.A

Material: EN 1.4301 / AISI 304

Finish: Satin

Optional: PVD Titanium Coated



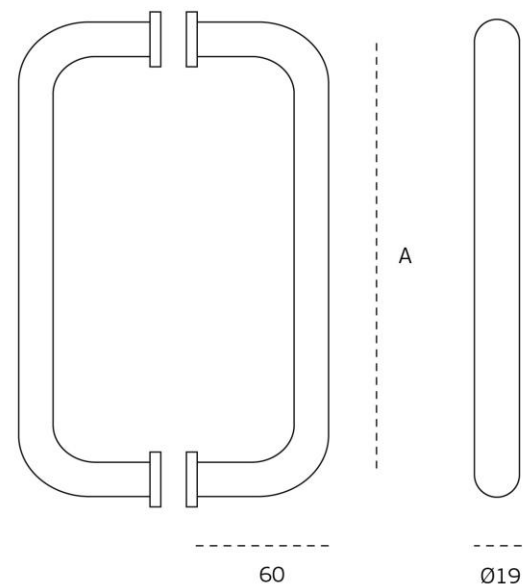


BDP-4.07.205.A

Material: EN 1.4301 / AISI 304

Finish: Satin

Optional: PVD Titanium Coated



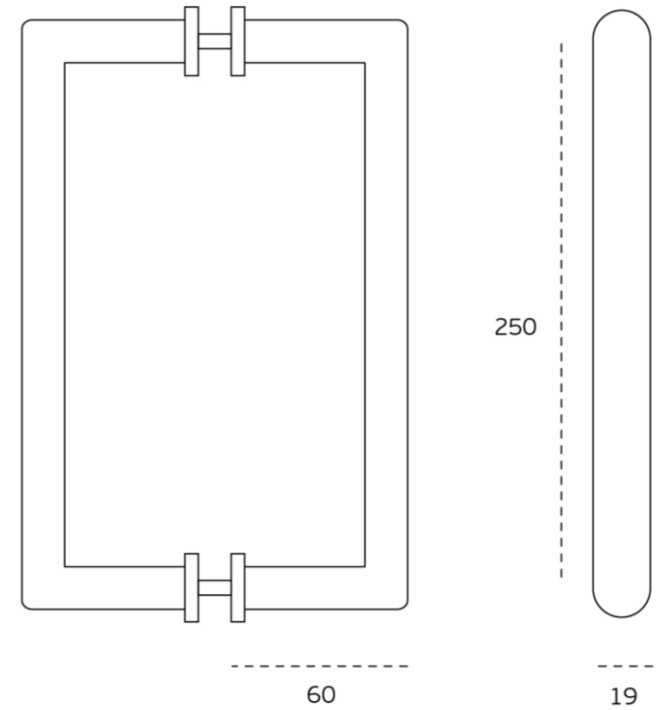
A - 200/250

BDP-4.07.204.A

Material: AISI 304

Finish: Satin

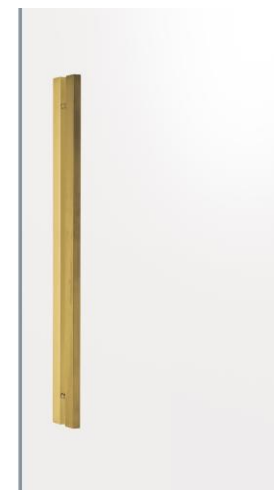
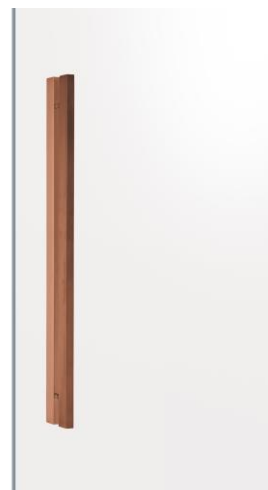
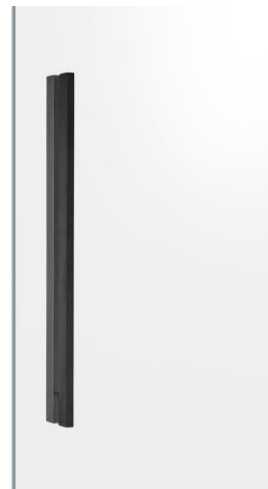
Optional: PVD Titanium Coated



BDP-4.07.201.V

Material: AISI 304

Finish: Satin



MASTER KEY SYSTEMS

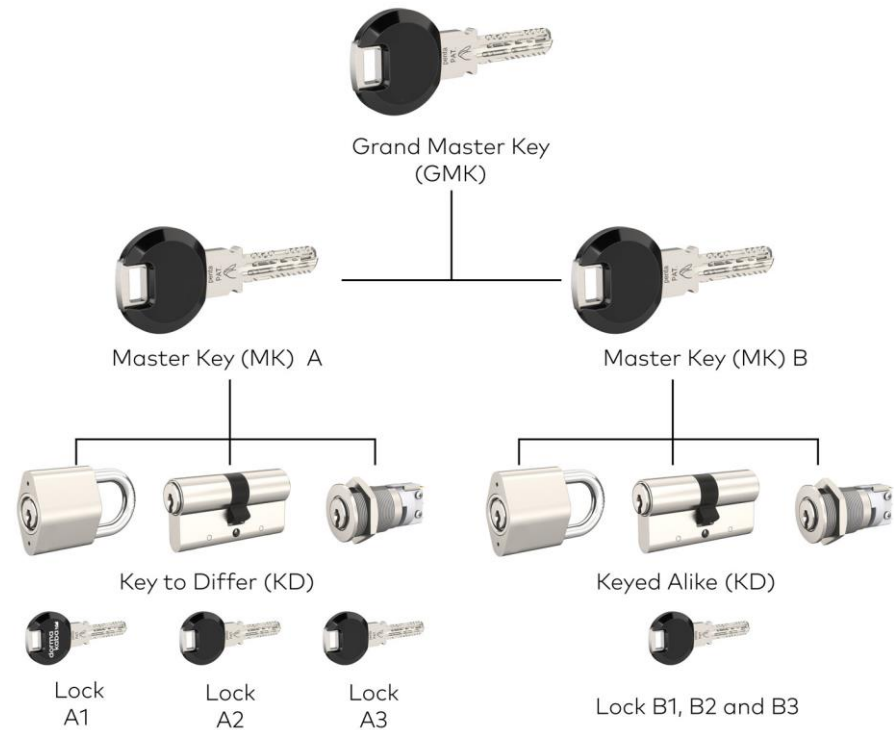


Complete Master Key System Design

A master key system is a key plan whereby selected keys can open a number of pre-defined doors. It helps maintain better control, saves key replacement costs and is convenient, as there are a lower number of keys in circulation. It also provides quick access to all rooms within the premises, e.g. for security staff and management personnel. This is not only convenient but can save lives in case of emergency.

In the front example, the 'Master Key' would open all doors and lock types in the property and is held by the caretaker. The Sub-Master A opens the main entrance and all the locks on the ground floor, and is held by the manager of the company that occupies that floor. The same applies to Sub-Master B.

In addition, each employee has one key that opens the main entrance, their own office door and their filing cabinets. These keys work with different types of lock, e.g. door locks, cabinet locks, padlocks, etc., as long as the cylinder inside them is of the same model.

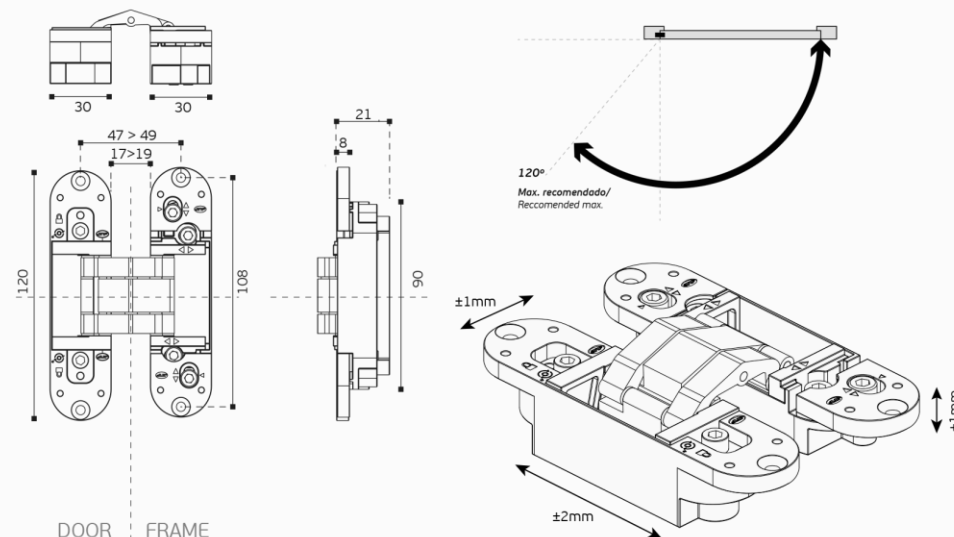
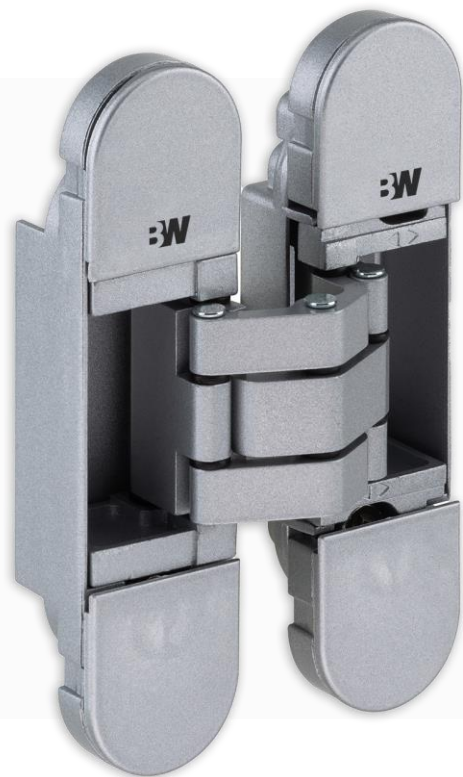


HINGES



BDH-2.05.064

Invisible hinge with 3D adjustment.



Finishes



3x
60
Kg
200.000 CYCLES

2x
50
Kg
200.000 CYCLES

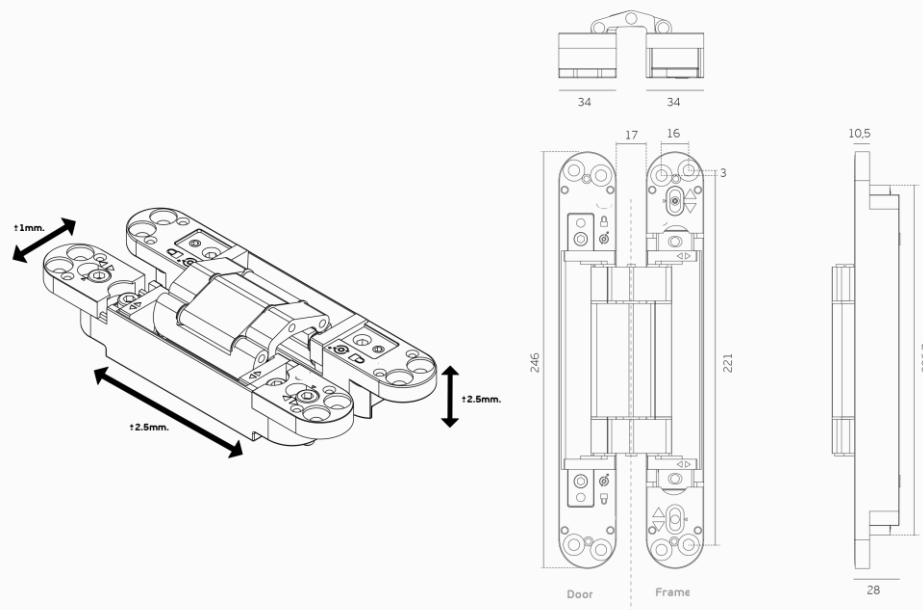


BDH-2.05.063.B

Invisible hinge with 3D adjustment.



Black Edition







BGH-5.845E 10
BGH-5.845E 20

Hidden door closer hinges

The new hidden oildynamic doorcloser hinge, for framed doors with a stop. Upon customer request. This type is completely hidden into the profile, and adapted to every project.



BGH-5.845E 20
Upper hinge



Features:

- Hydraulic Closing;
- Invisible – hidden into the profile;
- Customizable, in order to satisfy every specific project;
- Adjustability of the closing speed;
- Height regulation +/- 3 mm;
- 90° Stop
- Minimum dimensions 25x25 mm.

The installation of the upper hinge is completed by the dedicated hidden lower hinge.



BGH-5.845E 10
Bottom hinge



❖ **MOVABLE & FIXED
PARTITIONS**

❖ **WALL SYSTEMS**



BW-DS SLIDING DOOR

MINIMALIST SLIDING DOOR WITH SAFETY GLASS

Would you like a nice glass door in your home despite your limited space? This BW-DS sliding door is the perfect solution. Restrained aluminum profiles and safety glass combine to offer an elegant appearance and great ease of use.

This glass door slides along the side of your wall. The hanging system can be fixed to the surface of the wall or ceiling. Do you prefer it to blend unobtrusively with your interior? Flush mounting is also possible.

Thanks to the sliders at the top, a track along the floor is unnecessary. Add an optional automatic closing system and the door will gently close itself.

As all **BW** glass doors are made to order, filling tall or wide openings is no problem. Thanks to our superior technology, various combinations and configurations are possible. Select your own color (standard or custom RAL color), profile finish (anodized or powder coat, matt or glossy, texture), glazing (clear, frosted, colored, Vanceva glass), door handles or pulls, division into panels or interplay of lines.





BW-DS POCKET SLIDING DOOR

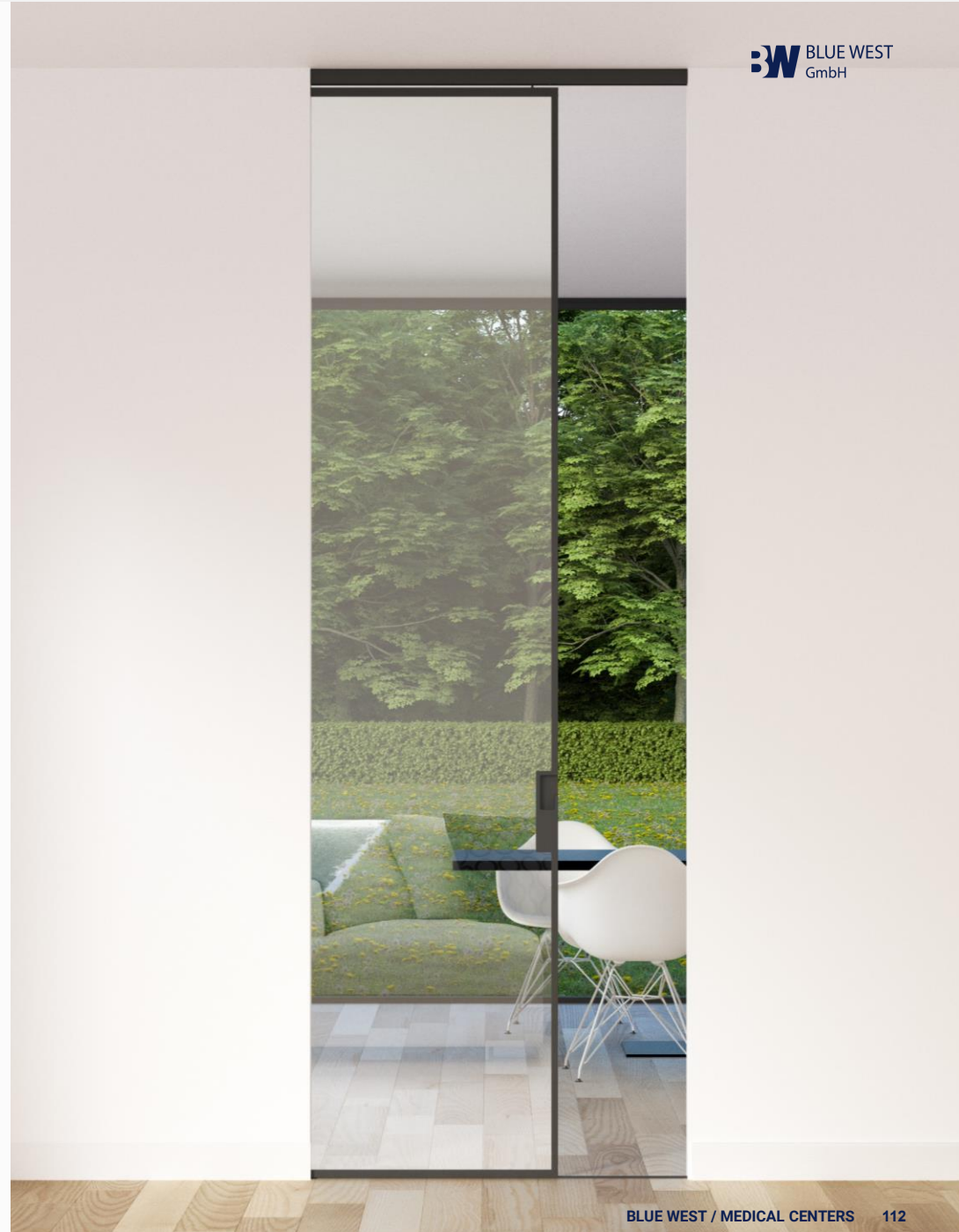
SLEEK SLIDING DOOR DISAPPEARS INTO WALL

Would you like a nice glass door in your home despite your limited space? This **BW-DS** pocket sliding door is worth considering.

The plain aluminum profiles offer a clean look, reinforced by the door's ability to disappear fully into the wall. Close the door to separate two areas and open it again to create one larger area.

Thanks to the sliders at the top, a track along the floor is unnecessary. Add an optional automatic closing system and the door will gently close itself.

As all **BW** glass doors are made to order, filling tall or wide openings is no problem. Thanks to our superior technology, various combinations and configurations are possible. Select your own color (standard or custom RAL color), profile finish (anodized or powder coat, matt or glossy, texture), glazing (clear, frosted, colored, Vanceva glass), door handles or pulls, division into panels or interplay of lines.





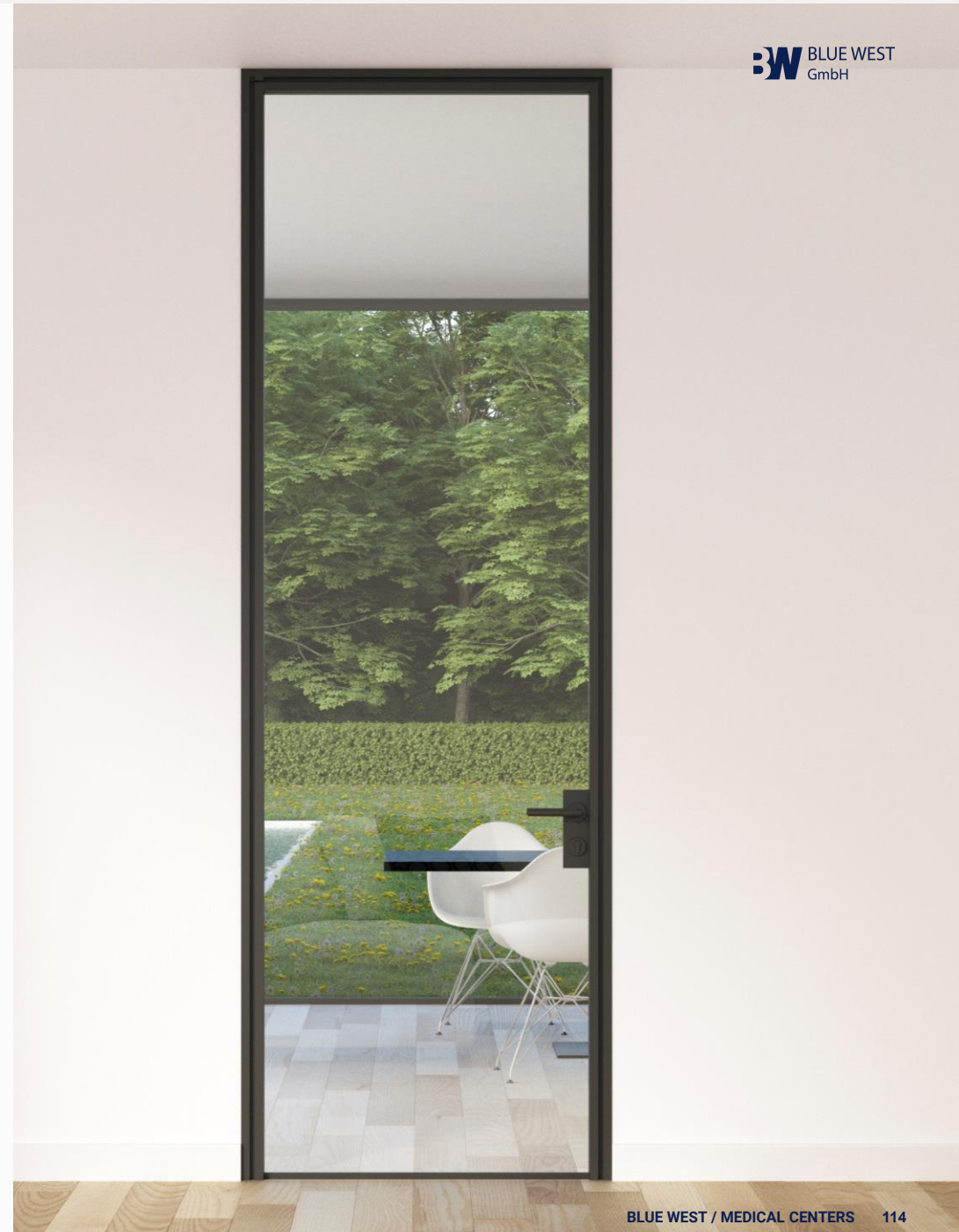
BW-D1-80 HINGED DOOR

HINGED DOOR WITH HANDLE AND LOCK IN THE GLASS

This contemporary **BW-D1-80** hinged door is fully on trend. The steel-look door combines an attractive aluminum frame with a large expanse of glass, allowing light to flood your space in abundance.

The door opens 135 degrees one way. Use of top and bottom pivots avoids unsightly hinges. The handle and lock fit into the pane of glass.

As all **BW** glass doors are made to order, filling tall or wide openings is no problem. Thanks to our superior technology, various combinations and configurations are possible. Select your own color (standard or custom RAL color), profile finish (anodized or powder coat, matt or glossy, texture), glazing (clear, frosted, colored, Vanceva glass), door handles or pulls.



BW-DB HINGED DOOR

HINGED DOOR WITH HANDLE AND LOCK IN THE FRAME

BW-DB is a hinged door with a sleek steel look; a lovely addition to your interior. The handle and lock are part of the door's frame.

The hinges integrate unobtrusively with the rest of the design. The door opens 90 degrees one way.

As all **BW** glass doors are made to order, filling tall or wide openings is no problem. Thanks to our superior technology, various combinations and configurations are possible. Select your own color (standard or custom RAL color), profile finish (anodized or powder coat, matt or glossy, texture), glazing (clear, frosted, colored, Vanceva glass), door handles or pulls.



BW-D1S PIVOT DOOR

FRAMELESS PIVOT DOOR WITH CENTRAL GLASS

The **BW-D1s** two-way frameless door is the most minimalist option in our range. Ultra-slim aluminum profiles provide a sleek metal look that is fully on trend.

A floor-mounted spring allows the door to close automatically. You can also opt to have it stay open at a 90-degree angle.

As all **BW** glass doors are made to order, filling tall or wide openings is no problem. Thanks to our superior technology, various combinations and configurations are possible. Select your own color (standard or custom RAL color), profile finish (anodized or powder coat, matt or glossy, texture), glazing (clear, frosted, colored, Vanceva glass), door handles or pulls.





26

20

BW-DBS PIVOT DOOR

FRAMELESS PIVOT DOOR WITH EXTERNAL GLAZING

BW-DBs is a sleek, frameless pivot door. It offers the look of a steel internal door, but is much lighter thanks to the slim aluminum profile. An eye-catching addition to any interior, whether rustic or modern.

A floor-mounted spring allows the door to close automatically. You can also opt to have it stay open at a 90-degree angle.

As all **BW** glass doors are made to order, filling tall or wide openings is no problem. Thanks to our superior technology, various combinations and configurations are possible. Select your own color (standard or custom RAL color), profile finish (anodized or powder coat, matt or glossy, texture), glazing (clear, frosted, colored, Vanceva glass), door handles or pulls, division into panels or interplay of lines.





BW-MONOVOLUME HINGED DOOR

HINGED DOOR WITH PANELS AND DOUBLE GLAZING

This **BW-MONOVOLUME** hinged door with multiple elements really catches the eye. The door is constructed with an aluminum frame that can be divided according to your preference. Several glass panes are fixed to either side using adhesive. You can combine various styles and colors of glass in a single door, making the range of design options very broad.

The mount for this hinged door is frameless. Available with hinges (opening 90 degrees one way) or as a two-way pivot door.

This hinged door is an ideal combination with one of our fixed glass partitions.





BW-MONOVOLUME SLIDING DOOR

SLIDING DOOR WITH PANELS AND DOUBLE GLAZING

This **BW-MONOVOLUME** sliding door with multiple panels is a true eye catcher. The door is constructed with an aluminum frame that can be divided according to your preference. Several glass panes are fixed to either side using adhesive. You can combine various styles and colors of glass in a single door, making the range of design options very broad.

This sliding door can move either alongside or into the wall. It slides smoothly and soundlessly along a track that can be mounted to the surface or flush with your wall or ceiling. There is no visible hardware along the floor.

This sliding door is an ideal combination with one of our fixed glass partitions.





M50 GLASS PARTITION

SLIM PARTITIONING WITH FRAMES AND PANELS

This **BW-M50** glass partition is ideal for those who love an industrial look. The aluminum frame with double glazing can be divided according to your preference.

The **BW-M50** invites you to get creative and combine different styles and colors of glass for a true eye catcher!



SLIDING GLASS DOOR BW-SWK75

CUSTOM SLIDING GLASS DOOR

The **BW** brand Anyway Doors with its custom-made glass sliding doors manages to merge clean lines and technical sophistication. Sliding partitions are contemporary and trendy, but are less suited to frequently-used passages or places with high acoustic or thermal requirements! A new and very compact anodized aluminum rail was designed for sliding glass doors.

The aluminum top rail can be mounted either on the wall or ceiling. If desired, the rail can also be incorporated into the ceiling. To prevent problems in advance with situations whereby the sliding doors move between two walls, a rail system was developed that enables the extraction of the sliding partition on one side, in the doorway. This means that no repairs or adjustments need to take place in between the two walls.







SLIDING PANEL DOOR BW-SWV

CUSTOM SLIDING PANEL DOOR

These modern made-to-measure sliding doors are well thought-out and have a practical design with a smooth, compact look and concealed integrated technology. They are ideal as an optical screen between two spaces, or for a wall cabinet. The intended function, location and arrangement determine the choice of materials and the sliding partition type.

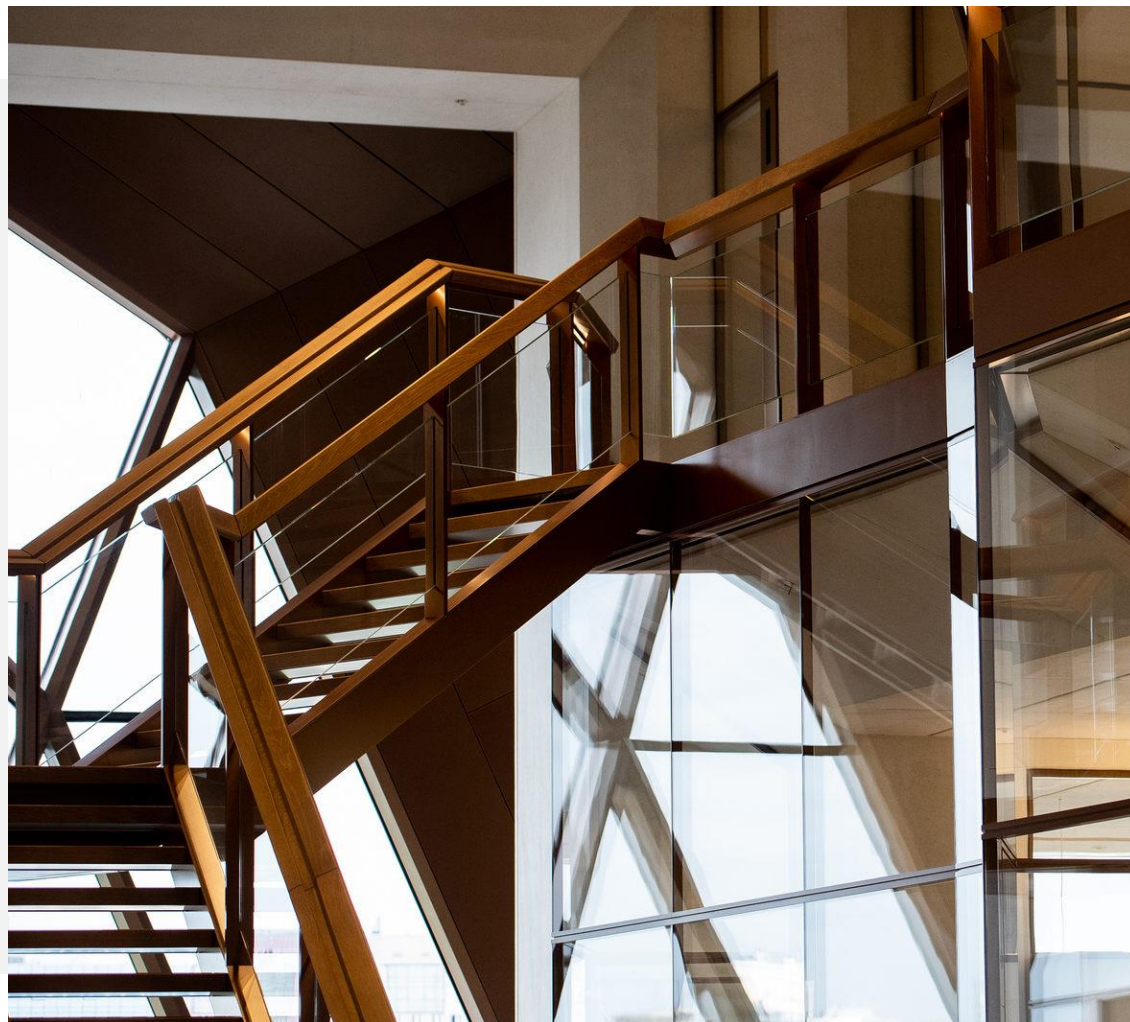
The tailor-made sliding doors are available in various materials, varying from full tempered glass doors to 'full panels' that have a solid core and are made of 'solid' full-core material.

Sliding partitions are very contemporary and trendy, but are less suited to frequently-used passages or places with high acoustic or thermal requirements! They are ideal for use between the living room and kitchen, living room and office, bedroom and wardrobe, bedroom and bathroom, and so on. They are less suitable in locations with frequent passage traffic or increased acoustic and thermal requirements, such as between the hallway and living room. For these locations you're better off looking at the pivoting doors which offer better ergonomics.





OPTIONS & INTEGRATIONS

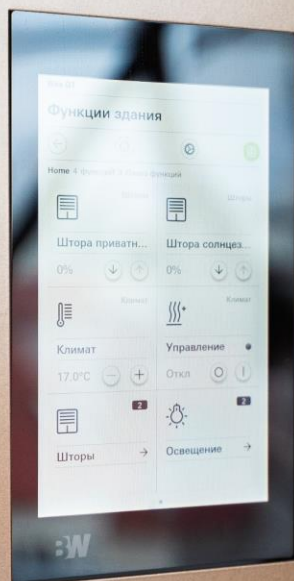


BW TECHNICAL PANEL

TECHNICAL CASINGS ALLOWING FOR AN EASY INTEGRATION AND READY ACCESSIBILITY OF CONTROLS, DISPLAYS AND CABLING

- We can easily conceal all controls, screens and their cabling in technical panels that seamlessly merge into our door / wall systems.
- Our **BLUE WEST** solutions are unique thanks to the many possibilities to connect and integrate our products with floor ceilings, walls and facades.
- The contemporary working environment requires that all new techniques are easily accessible. Our range of options & integration ensures that you can enjoy your workshop in comfort.





BW FLEXIBLE WALL

GLASS WALL/MOBILE WALL CONNECTION WITH SPECIAL ACOUSTIC CONNECTION

Do you have a flexible wall that you want to connect as imperceptibly as possible to your glass office walls? Our special acoustic connection ensures a soundproof and refined connection between the glass wall and the flexible wall.

Our **BW** solutions are unique thanks to the many possibilities to connect and integrate our products with floor ceilings, walls and facades.

The contemporary working environment requires that all new techniques are easily accessible. Our range of options & integration ensures that you can enjoy your workshop in comfort.



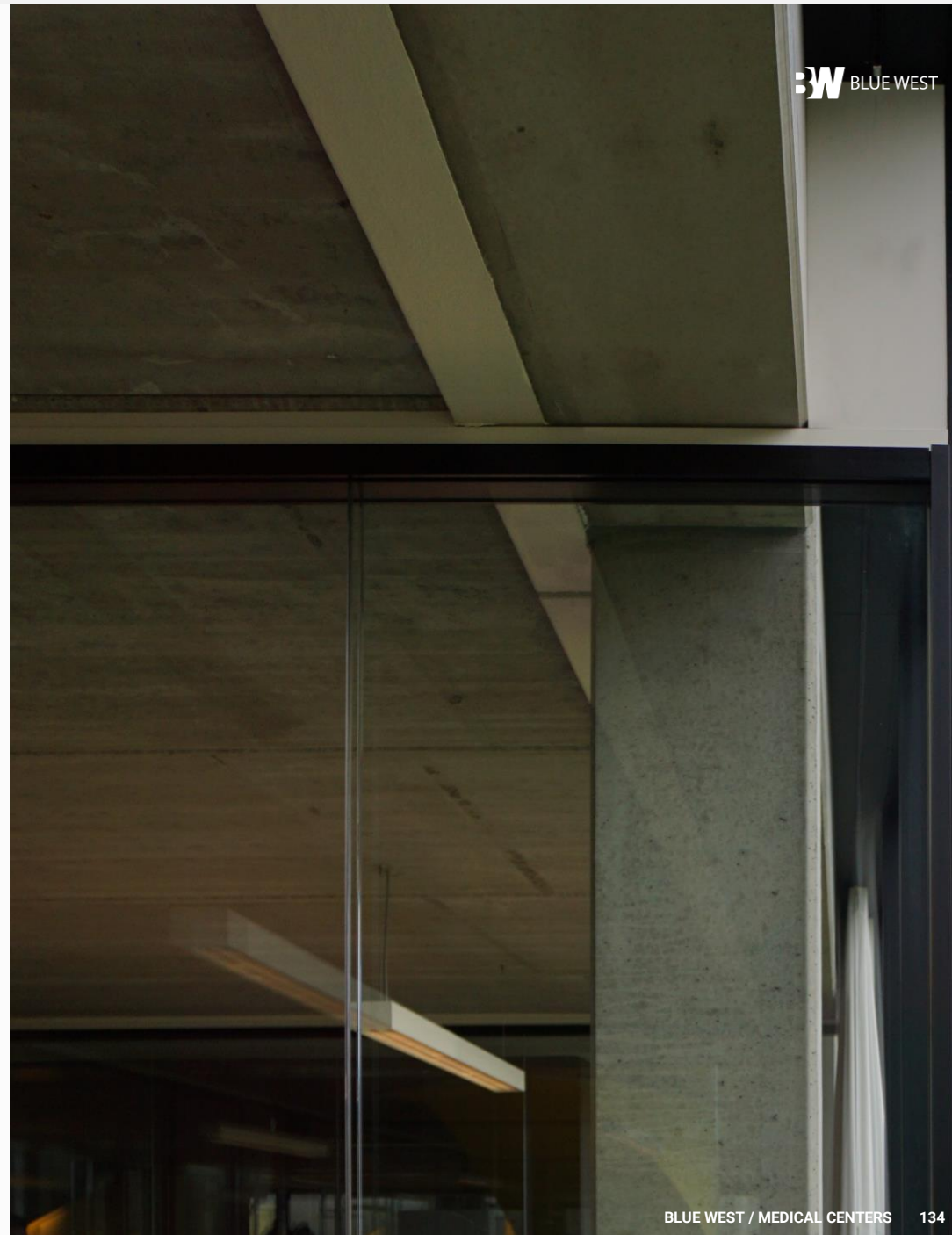
BW FACADE

ELEGANT WALL/FACADE CONNECTION PROFILE AND AN OPTIONAL CONNECTION IN CASE OF HEIGHT DIFFERENCES

We provide a seal between your office walls and the facade with an elegant connection profile. We can even eliminate a height difference between the wall and the facade.

Our **BW** solutions are unique thanks to the many possibilities to connect and integrate our products with floor ceilings, walls and facades.

The contemporary working environment requires that all new techniques are easily accessible. Our range of options & integration ensures that you can enjoy your workshop in comfort.



DISCRETION

OPTIONAL PROVIDING OF SCREENS OR INTEGRATION OF ADJUSTABLE BLINDS BETWEEN GLASS PANELS

Organize your office without sacrificing transparency and sense of space? Our glass partition walls and doors are ideal for this. Still, there is a need for some privacy now and then. Integrating slats in double-glazed wall gives you the option of closing off your working environment.

Our **BW** solutions are unique thanks to the many possibilities to connect and integrate our products with floor ceilings, walls and facades.

The contemporary working environment requires that all new techniques are easily accessible. Our range of options & integration ensures that you can enjoy your workshop in comfort.





BW SAFE SLIDING WALL SYSTEM

BW SAFE offers enhanced convenience and security for the installer and user. The new door rail enables an effortless and time-saving installation thanks to proven Clamp & Glue technology. Suitable for toughened glass thicknesses 10-19mm with optional safe use of laminated safety glass for added safety.



Features

The new 3-in-1 multi-lock offers three options for secure locking. Additional intelligent solutions like a status display, a concealed door closer and double brush seals to minimise drafts, ensure more convenience and security. Extensive design freedom allows adaptation to any interior ambience.

- Hassle-free installation thanks to new Clamp & Glue technology
- Enhanced safety in use with laminated safety glass (LSG)
- 3-in-1 multi-lock gives more locking possibilities in one component
- New status display clearly shows the locking status of the door panel
- Less draft, greater comfort with innovative double brush seals
- Glass panes can have the following glass thicknesses: 10mm, 12mm, 12.8mm, 13.5mm, 15mm, 17mm and 19 mm.

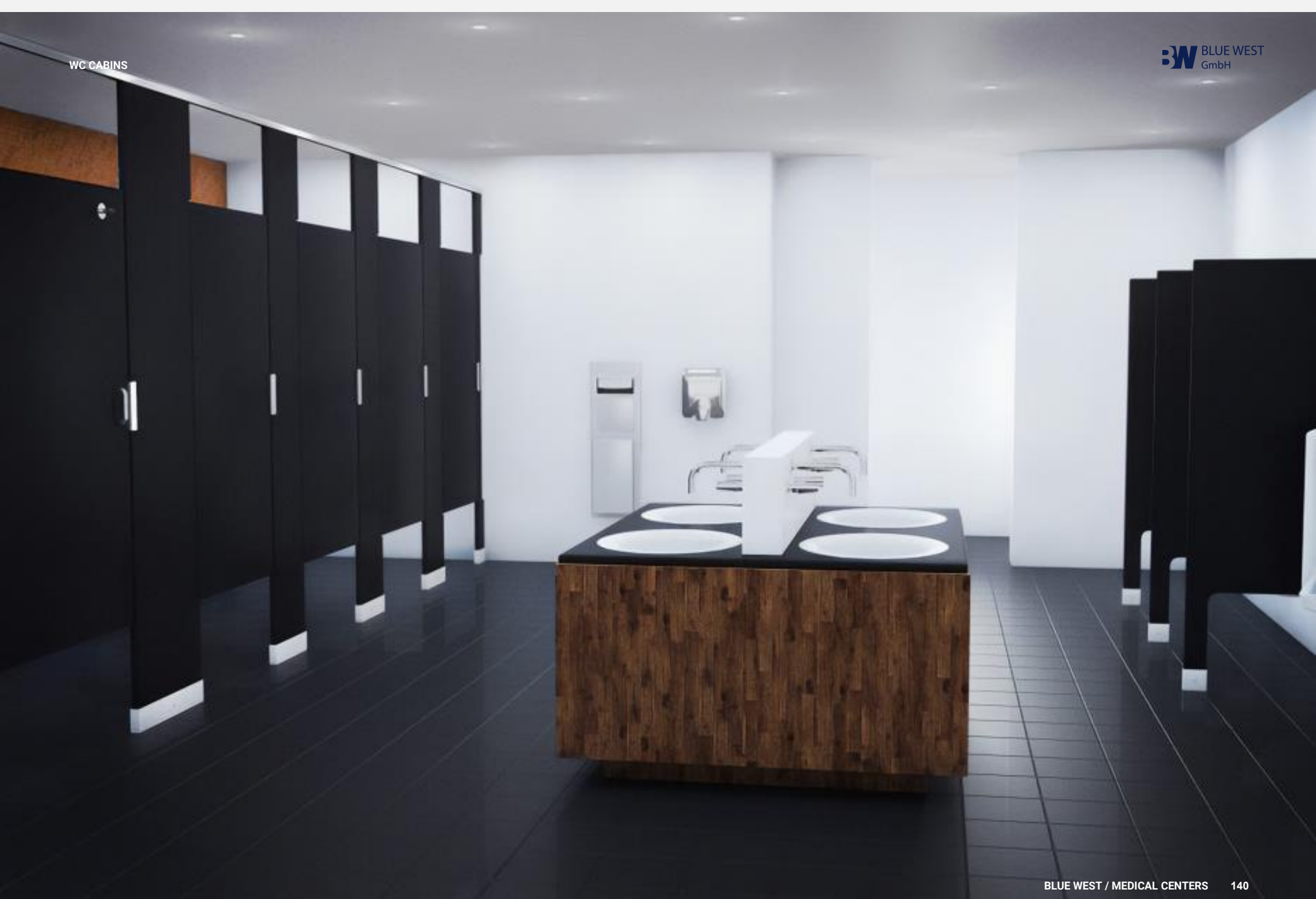
DATA

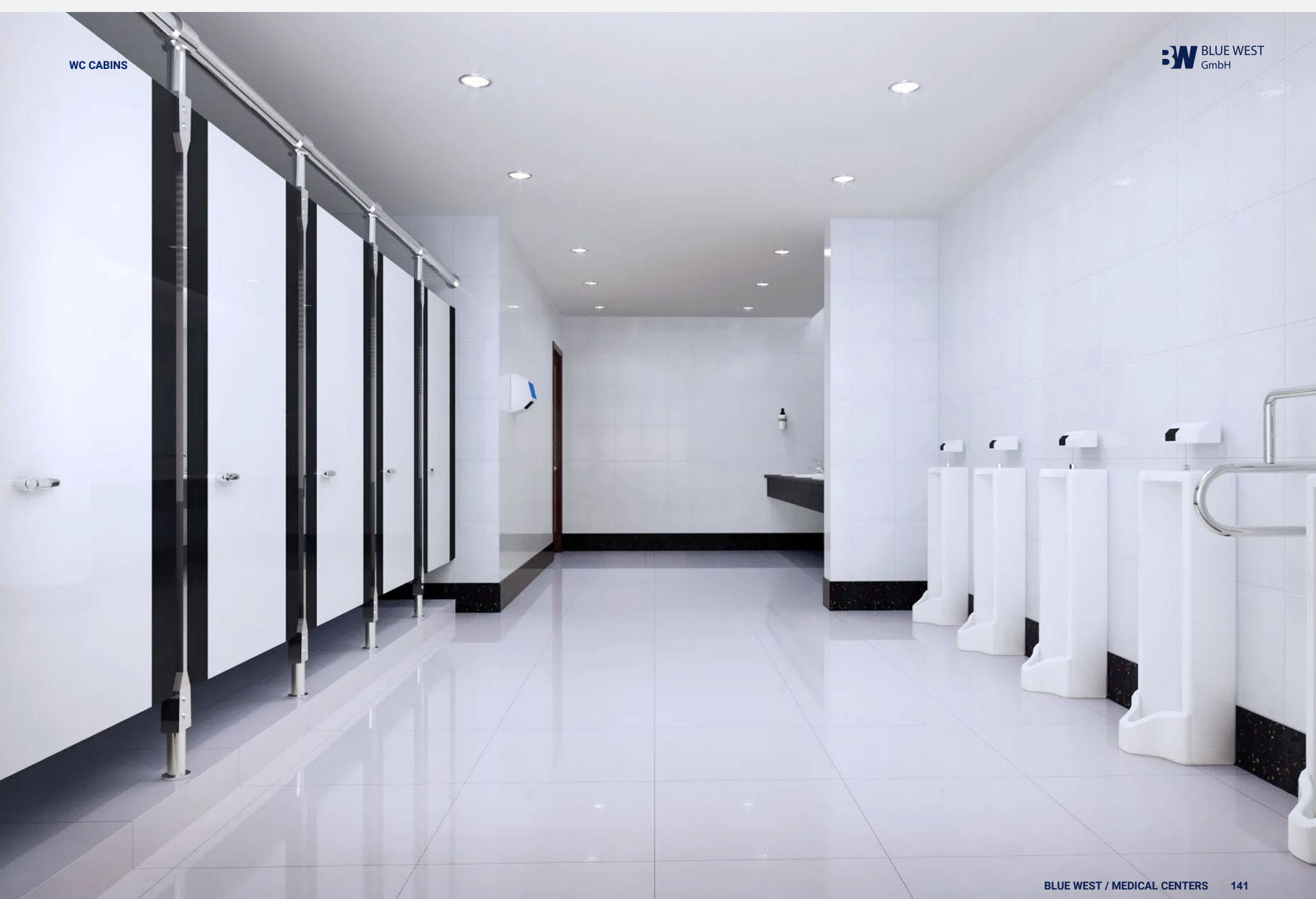
Max. system height:	4000 mm
Max. panel width:	1250 mm
Max. panel weight:	150 kg Seamlessly accepts glass thicknesses ranging from 10 to 19 mm
Tested and certified:	Wind load (frame bending): EN 12211 Class 1 Fatigue strength: DIN EN 1527 Class 2 and DIN EN 1991 Class 3 Shock test: DIN EN 13049 Class 5 (highest class) Corrosion test: DIN EN 1670 Class 4 EPD (Environmental Product Declaration): ISO 14040

WC CABINS













FIRE RATED DOORS



Fire Doors







PANIC BARS

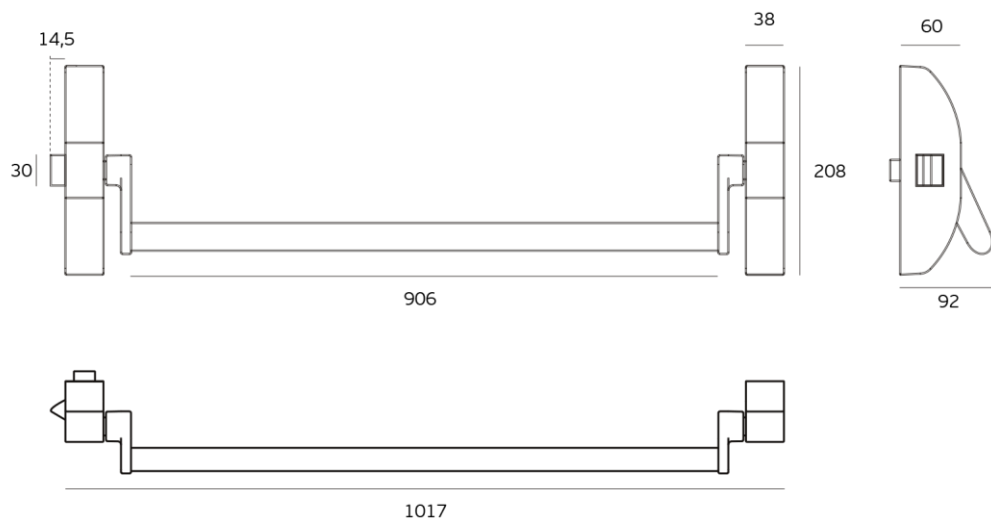


BDE-3.20.951.K1

PANIC EXIT DEVICES FOR GLASS DOORS



Reversible anti panic door lock for single glass doors. Closing system through a side latch. Without access from external side.



PANIC EXIT BAR FOR GLASS DOORS

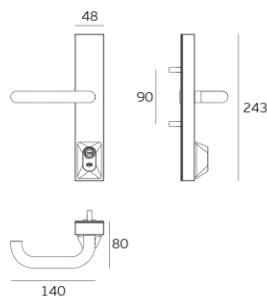
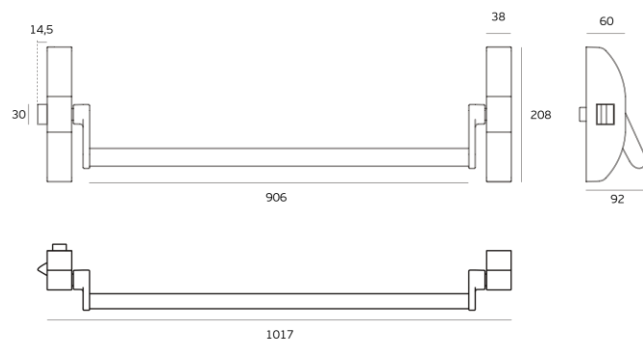


BDE-3.20.952.K2

PANIC EXIT DEVICES FOR GLASS DOORS



Reversible anti-panic door lock for single glass doors. Closing system through a side latch. Opening by key from the outside. Lever handle with plate and cylinder included.

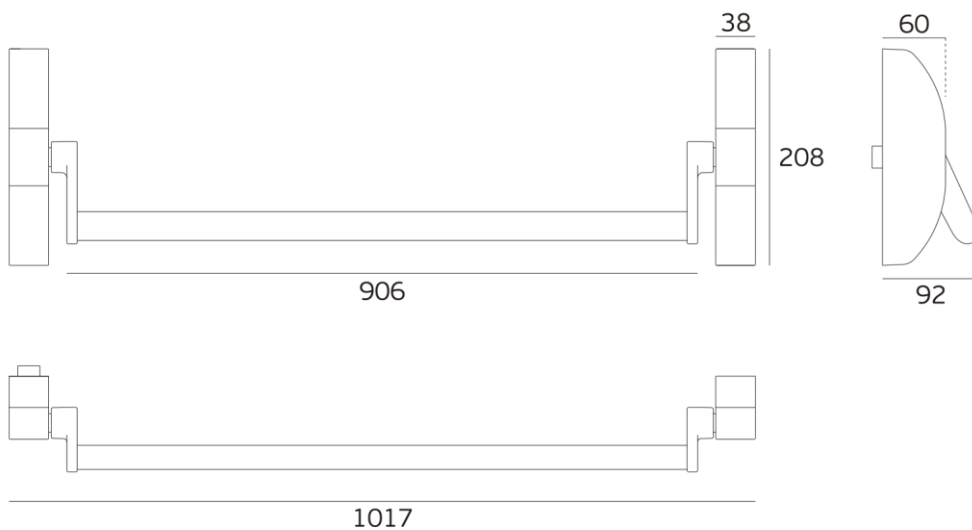


BDE-1.20.957

ANTIPANIC LOCK



Reversible panic exit device for single doors. Without side latch.
 Applicable with mortice door lock BDE-1.20.960/BDE.1.20.960.C.
 Opening by key from the outside.
 Lever handle with plate and cylinder not included



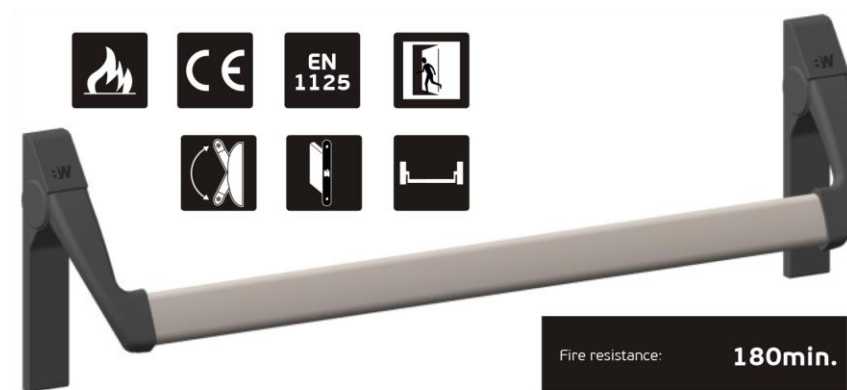
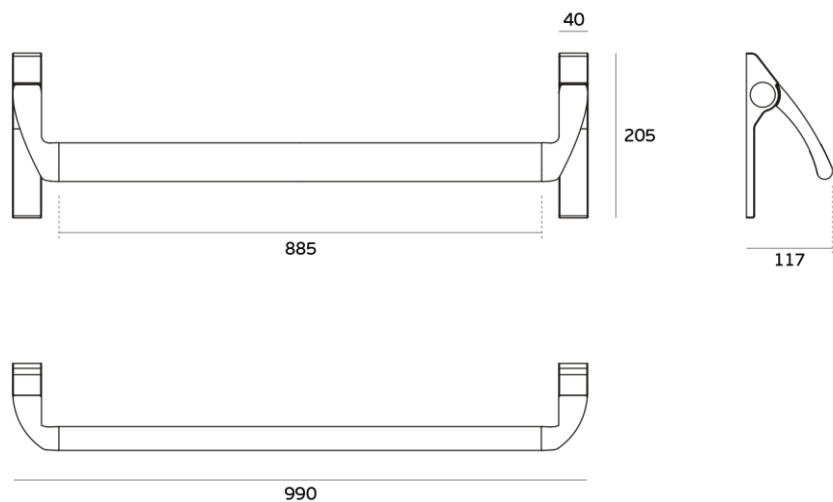


BDE-F1.20.945

ANTIPANIC LOCK



Reversible anti-panic door lock for single doors. Without side latch. Applicable with mortise lock .Opening by key from the outside. Lever handle with plate and cylinder not included

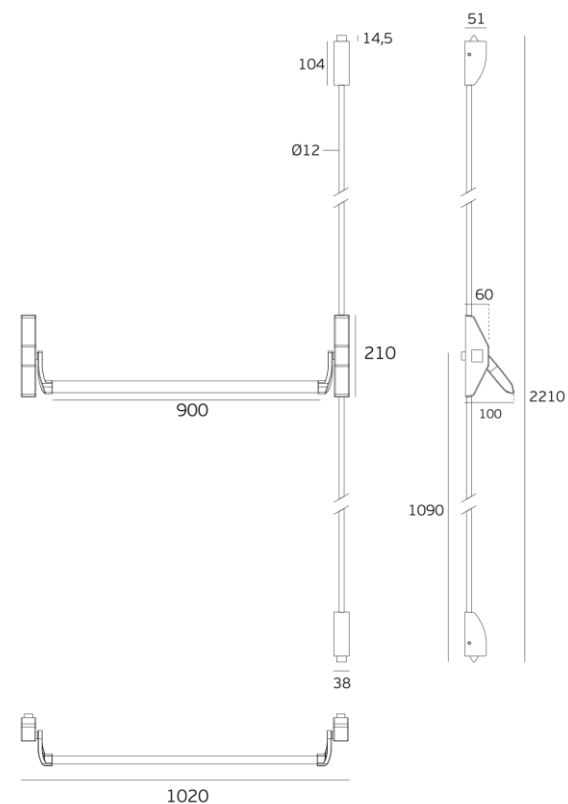
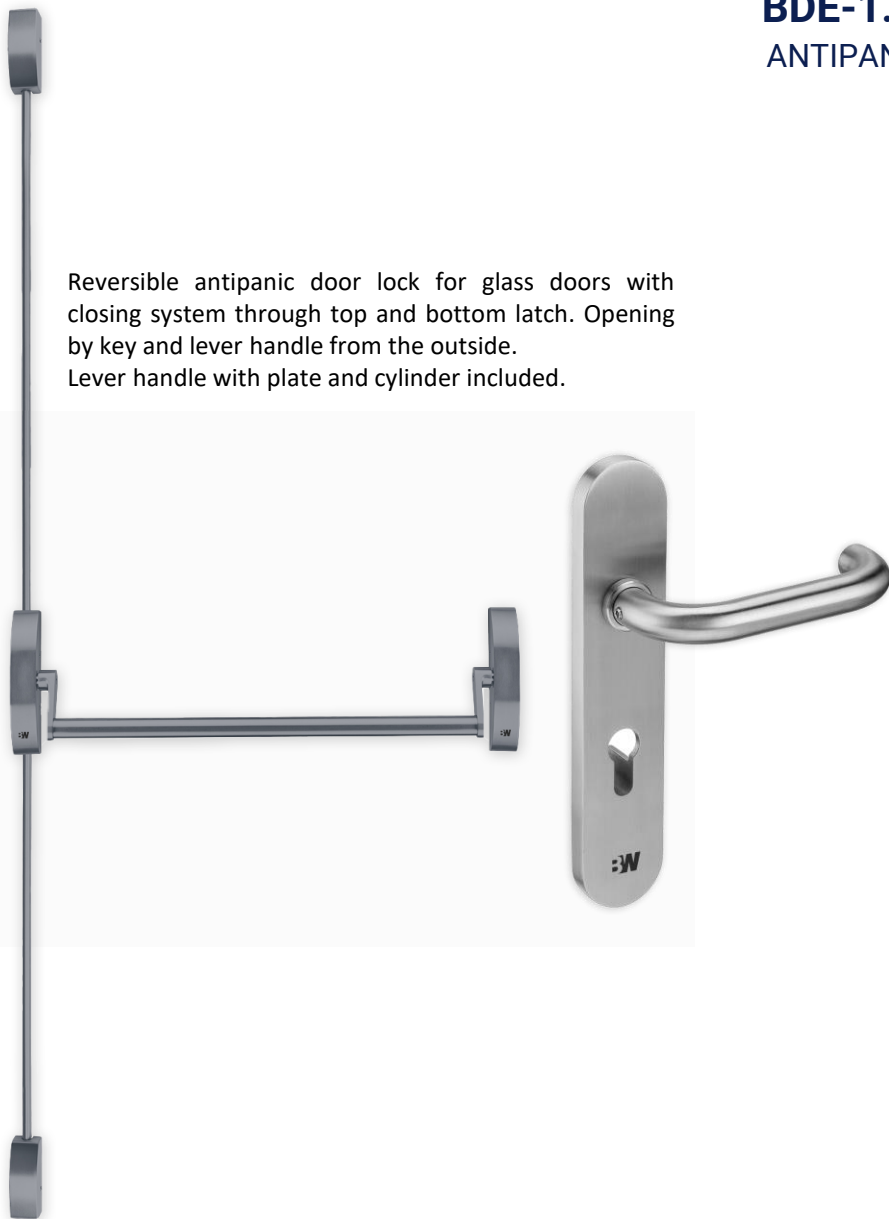




BDE-1.20. 954.KIT

ANTIPANIC DOOR LOCK

Reversible antipanic door lock for glass doors with closing system through top and bottom latch. Opening by key and lever handle from the outside. Lever handle with plate and cylinder included.

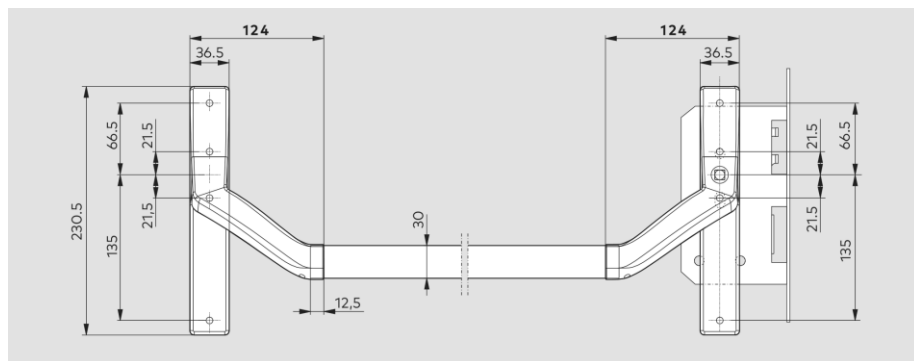


BDE-D2500

TOUCH BAR FITTINGS FOR TIMBER DOORS



With its series **BDE-D2500** (touch bar), the **BLUE WEST** Premium project door furniture and corresponding complementary accessories, **BLUE WEST** is able to offer a high-performance panic hardware system ideal for both internal and external timber door applications. The integrated mortise panic/emergency escape lock enables the door to be engaged by both latch and bolt.





ACCESS CONTROL DEVICES





BW-OP-VID-PRO-RDR



The **BLUE WEST** Video Reader Pro combines the heightened security of a built-in high resolution camera with the form factor of a mullion door reader. Automatically associate video footage with access events, alerts, and motion, and visually monitor entries in the **BW** mobile app, and the Control Center.

The Video Reader Pro is a multi-technology reader that supports both low (125 kHz) and high (13.56 MHz) frequencies. The camera angle is adjustable during installation, ensuring optimal video coverage. The Video Reader Pro is ONVIF Profile S and T compliant to easily integrate with third-party video management systems, and connects to legacy access control panels in Standalone Mode or via Mobile Gateway.



Fast & reliable

Patented Triple Unlock with Bluetooth, WiFi and cellular data



Touchless access

Supports hands-free Wave to Unlock, mobile or watch app, tablet, HF and LF keycards, fobs, and Cloud Key



Video at the door

Associate video with access events or alerts and visually monitor entries from the app or Control Center



Cloud security

Encrypted end-to-end communication, strong public key cryptography



Interoperability

Easily integrates with physical on-premise systems and logical software systems



Simple management

Software runs in the cloud, no need to set up or maintain local servers and software



Capacity tracking

Track occupancy and enforce capacity limits with innovative BLE functionality



Monitoring

Built-in diagnostic and real-time troubleshooting insights



Reliability

Instant software upgrades ensure consistent, high-quality performance



BW-OP-VID-PRO-INT



The **BLUE WEST** Video Intercom Reader Pro combines a built-in high resolution camera, intelligent intercom, and multi-technology reader into a slim and sleek form factor. Visitors use the intercom to initiate calls, communicate with assigned users, and are visually identified within the **BLUE WEST** app. Automatically associate video footage with access events and visually monitor entries in the **BW** Control Center. The Video Intercom Reader Pro is a multi-technology reader that supports both low (125 kHz) and high (13.56 MHz) frequencies. The camera angle is adjustable during installation, ensuring optimal video footage.



Works with any system

Easily integrates with legacy access control systems, logical software systems, and existing video systems via ONVIF-compliant platform



Touchless reliable access

Our patented Triple Unlock technology supports hands-free supports hands-free Wave to Unlock, mobile or watch app, tablet, HF and LF keycards, fobs, and Cloud Key



Video at the door

Associate video with access events or alerts and visually monitor entries from the app or Control Center



Smart intercom

Visitors can say the name of the person they're visiting, ask to speak to a receptionist, or leave a voicemail, all via the intercom's intelligent voice interface



Clear calls

Two-way audio streaming with echo and noise cancellation lets you easily communicate with guests at the door



Easy to install

Sleek mullion form factor is easy to mount and install with simple PoE connectivity and snap-in design



Cloud security

Encrypted end-to-end communication, strong public key cryptography



Capacity tracking

Track occupancy and enforce capacity limits with innovative BLE functionality



Monitoring

Built-in diagnostic and real-time troubleshooting insights



BW-OP-R2-STND Standard Door Reader



The **BLUE WEST** Standard Smart Reader v2 leverages industry leading security combined with an elegant design that will enhance any door and office environment. The reader supports multiple touchless access methods, including Wave to Unlock, in-app and remote unlocks, and unlocking via a Smart Watch. This multi-technology reader supports both low (125 kHz) and high (13.56 MHz) frequencies, plus a wide variety of key cards and fobs.



Fast & reliable

Patented Triple Unlock with Bluetooth, WiFi and cellular data



Touchless access

Supports hands-free Wave to Unlock, mobile or watch app, tablet, HF and LF keycards, fobs, and Cloud Key



Reader security

Stores no sensitive data, tamper resistant



Fail safe

Designed to withstand power failures and Internet outages



Easy to install

Standard wiring, easily replaces legacy systems



Capacity tracking

Track occupancy and enforce capacity limits with innovative BLE functionality

BW-OP-R2-MULL Mullion Door Reader



The **BLUE WEST** BW-Mullion Smart Reader v2 leverages industry leading security combined with an elegant design that will enhance any door and office environment. The reader supports multiple touchless access methods, including Wave to Unlock, in-app and remote unlocks, and unlocking via a Smart Watch. This multi-technology reader supports both low (125 kHz) and high (13.56 MHz) frequencies, plus a wide variety of key cards and fobs. Innovative BLE functionality allows the reader to track occupancy and supports contact tracing. The mullion form is ideal for surface mounting where space is limited, like on a doorframe.



Fast & reliable

Patented Triple Unlock with Bluetooth, WiFi and cellular data



Touchless access

Supports hands-free Wave to Unlock, mobile or watch app, tablet, HF and LF keycards, fobs, and Cloud Key



Reader security

Stores no sensitive data, tamper resistant



Fail safe

Designed to withstand power failures and Internet outages



Easy to install

Standard wiring, easily replaces legacy systems



Capacity tracking

Track occupancy and enforce capacity limits with innovative BLE functionality

PHYSICAL ACCESS CONTROL SOLUTIONS (OUTSIDE)



BW-AC30 HIGH SECURITY CYCLOPE SERIES



BLUE WEST BW-AC30 high security Cyclopes ensure the highest level of anti-ramming protection. It was tested and certified according to ASTM F2656/F2656-15 and IWA14-1:2013 standards. The blocking segment is operated from an external control box with the HPU and PLC. Interconnection between the two elements is provided via the interconnected power and oil hoses. The equipment has been designed, engineered and extensively tested to maintain high intensity operations. A wide range of optional configurations enables the **BLUE WEST** high security Cyclopes to be an ideal security solution for a variety of projects under different environment conditions. This solution greatly simplifies the installation and service maintenance procedures. The combined features make Cyclopes an ideal solution for a multitude of projects.



BOOM BARRIER



BLUE WEST automatic Boom Barriers are a fully automated solutions for controlling the access of cars to a protected area. Housing of boom barrier is available in different RAL colors. High speed of operation makes arm barriers providing high territory security. It should be installed nearby exit /entrance gates and operates in complex with a parking system devices to provide high security access.

THANK YOU FOR YOUR ATTENTION

FOR MORE TECHNICAL INFORMATION CONTACT US



Neuer Wall 71 c/o WorkRepublic 20354
Hamburg - Germany
+49 (0) 40 9999 9442-9
www.bluewest.de
info@bluewest.de



Sale office

Maslak 1453, Ticari T4b blok -7kat Daire
153, Sariyer-Istanbul
+90 850 305 930
info@bluewestmiddleeast.com