

Bluewest.de
info@Bluewest.de

ADDRESS:

Neuer Wall 71, c/o WorkRepublic
20354 Hamburg
Germany

TEL & FAX: +49 40 99 99 94 42 9



BLUE WEST
GmbH

GLASS HINGES

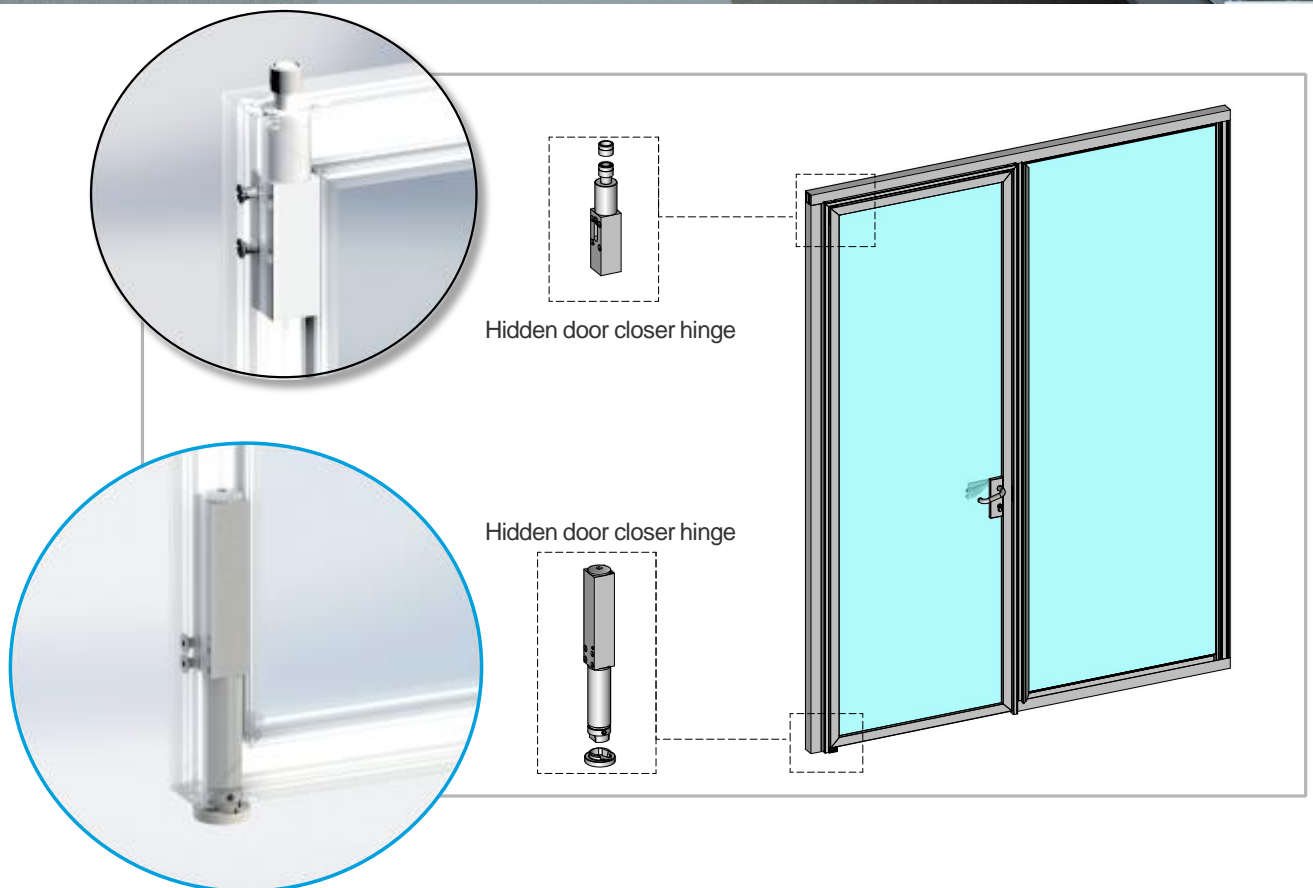
For impressive entrances
For high quality solutions
For many applications



BGH 31-845E

Hidden Hydraulic Hinge





BGH 31-845E10

New hidden oil dynamic door closer hinge



The new completely hidden oil dynamic door-closer hinge, for framed doors with a stop.

Features:

- Hydraulic Closing;
- Invisible – hidden into the profile;
- Customizable, in order to satisfy every specific project;
- Adjustability of the closing speed;
- 90° Stop
- Minimum dimensions 25x25 mm

BGH 31- 845E 20
Upper hinge

The installation of the upper hinge is completed by the dedicated hidden lower hinge



Note : The our hydraulic hinges got TÜV certification EN 1154 that levels them to all intents and purposes to floor springs, even if they have a higher performance (over 90% for the hinges 50-60% of traditional floor springs).

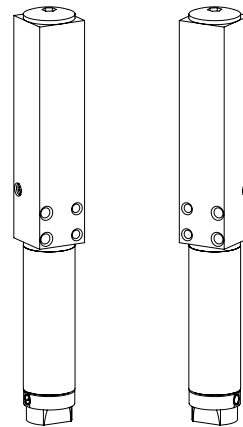
BGH 31- 845E 10
Bottom hinge

BGH 31-845E 10

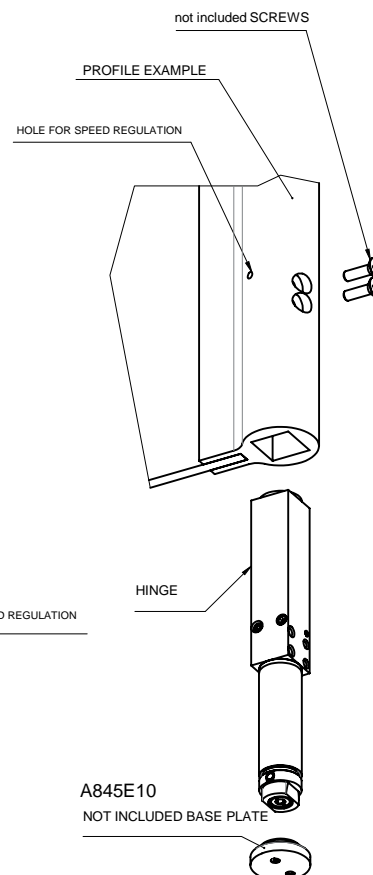
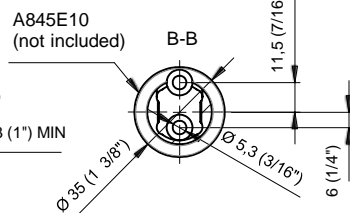
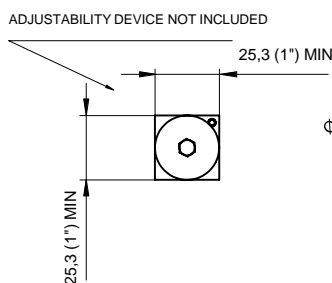
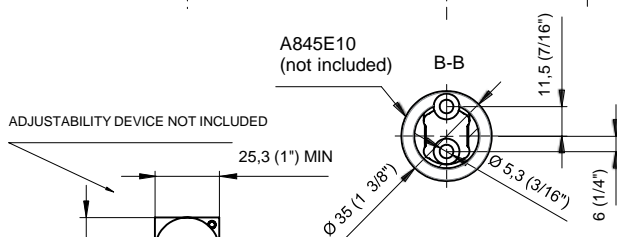
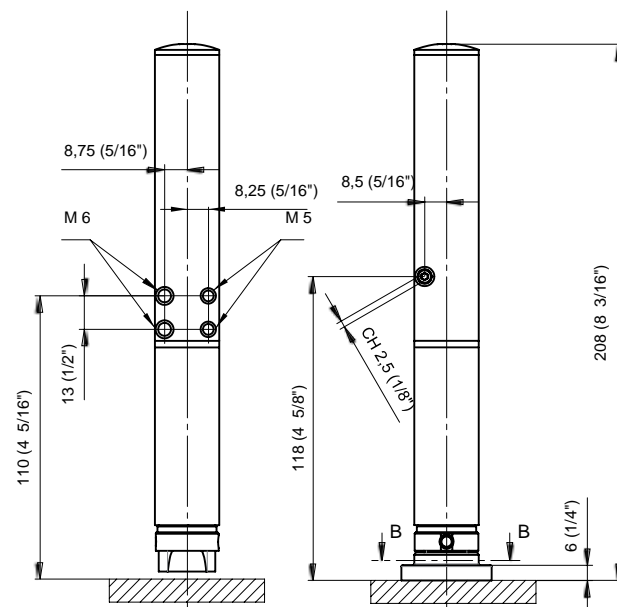


Hidden bottom hydraulic hinge. For framed doors with a stop. Adjustable closing speed and constant braking control; the door opens up to 180°. Stop at +90°, and at +180° according to wall project.

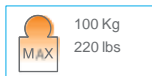
BGH 31-845E10 R = right
BGH 31-845E10 L = left



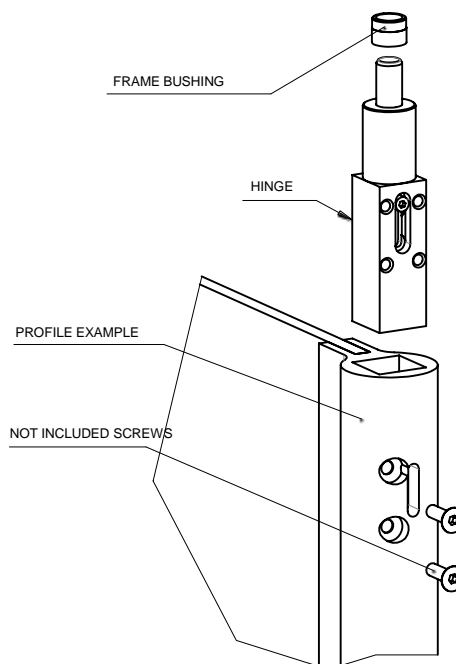
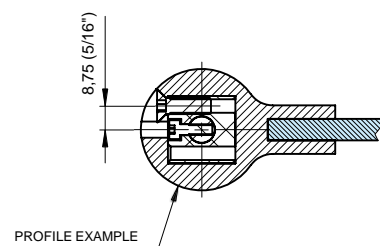
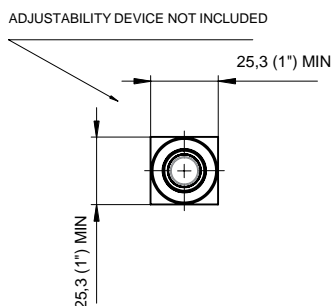
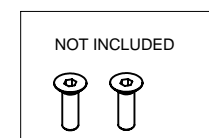
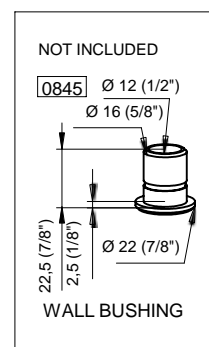
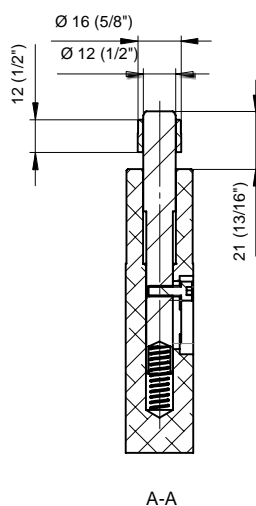
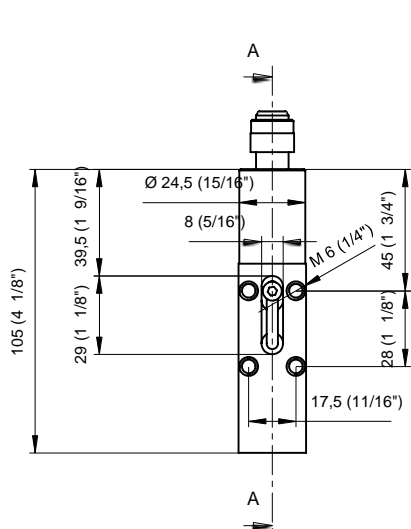
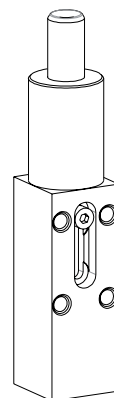
BGH 31-845E10 L BGH 31-845E10 R



BGH 31- 845E 20



Hidden top hinge. For framed doors with a stop.
To be matched with BGH 31-845E10



BGH 32-835E

Oil dynamic Hinges

different.



Oil Dynamic Hinges

BGH 32-835E10N



BGH 32-835E50







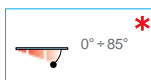
Prodigious and revolutionary:

- Hinge with integrated door closer for doors with stop both internal and external.
- The first hinge with adjustable closing and constant braking control.
- For all door opening angles up to 180°. Also available in the version with automatic closing from 90° to 0°. Free hinge from 90° to 180°.
- It prevents unhinging through a shock absorber and has an over-pressure device that avoids breaking in accidental shoving scenarios.
- May be fixed to wall, wood or profiles with a stop.
- Jamb depth from 30 to 50 mm.



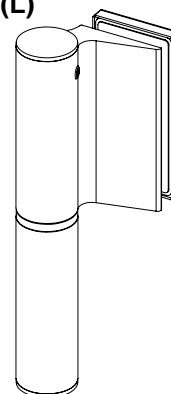
BGH 32-835E10N

 8÷21,52 5/16" to 7/8"	 800÷1200mm 31.49" to 47.24"	 120 Kg 264 lbs	 -15°C +5°F +40°C +104°F
--	--	---	--

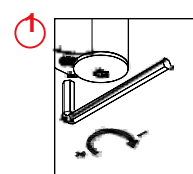
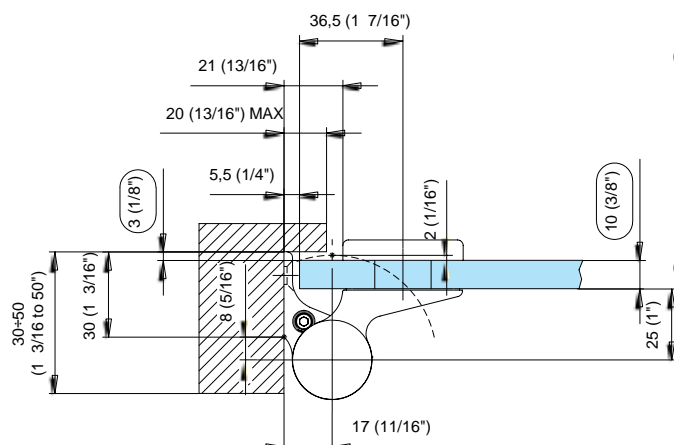
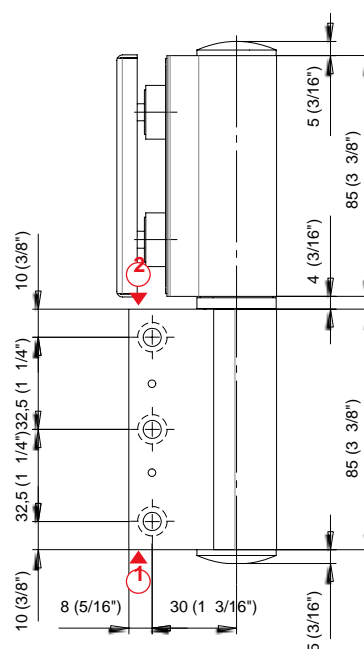
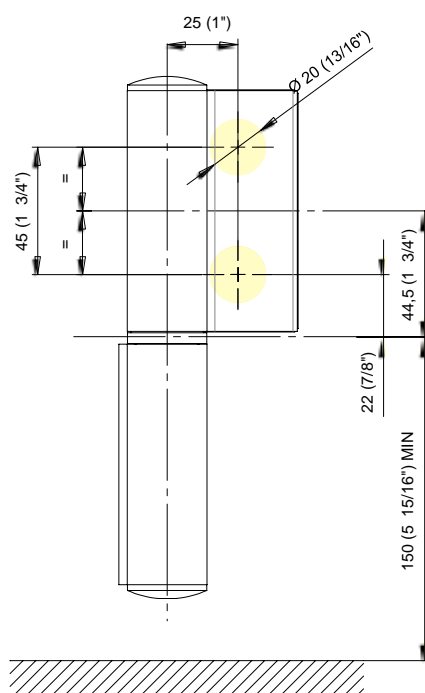
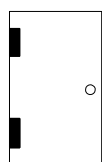


Hydraulic hinge glass to wall for doors with stop, with adjustable closing speed and consent braking control: the door opens up to 180°. Stop at +90° 180°.

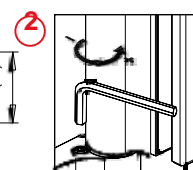
BGH 32-835E10N (R)
BGH 32-835E10N (L)



The hinge has a loading and it is therefore necessary a closing stop.

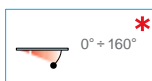
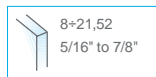


Final latch adjustment



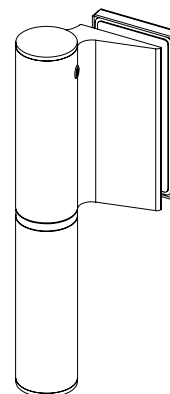
Closing speed adjustment

BGH 32- 835E11N

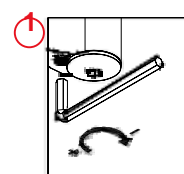
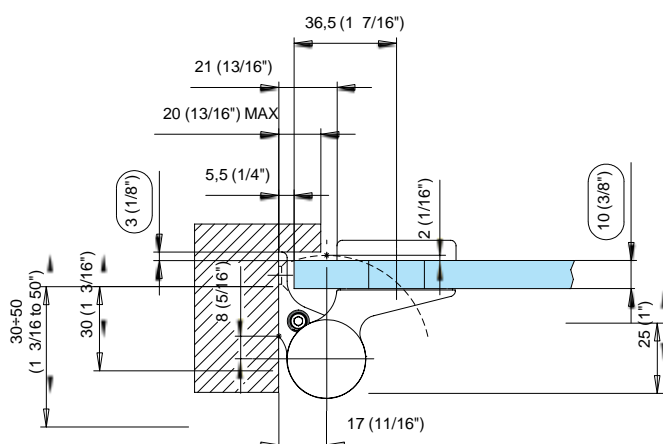
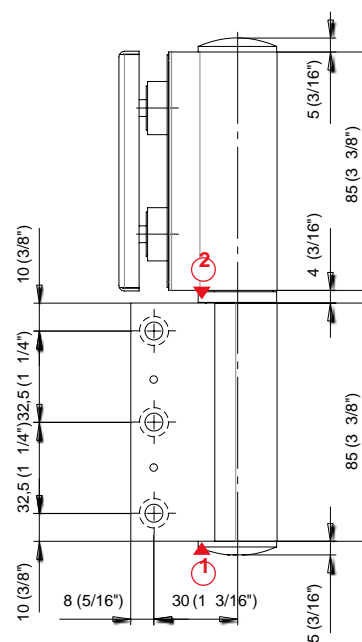
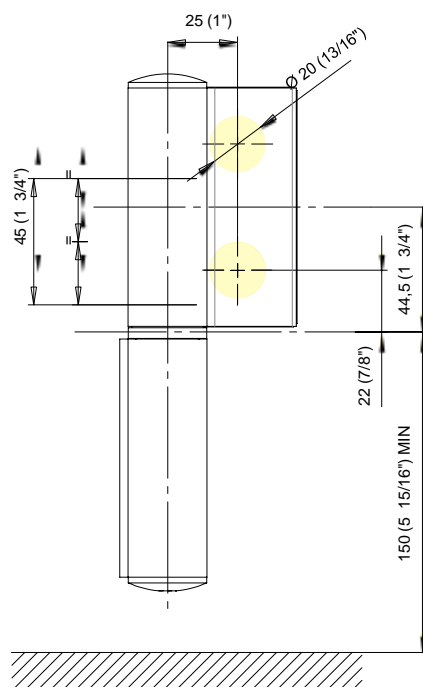
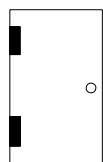


Hydraulic hinge glass to wall for doors with stop, with adjustable closing speed and consent braking control: the door opens up to 180°. Stop at +180°. Installed on doors with a profile on a stop. Jamb depth from 30 to 50 mm.

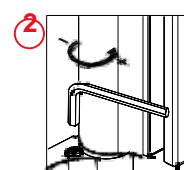
BGH 32- 835E11N (R)
BGH 32- 835E11N (L)



The hinge has a loading and it is therefore necessary a closing stop.

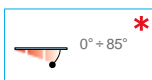
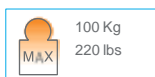
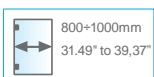
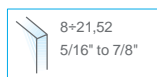


Final latch adjustment



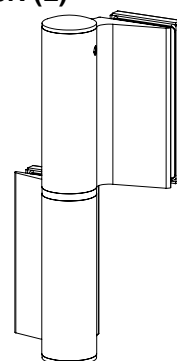
Closing speed adjustment

BGH 32-835E11N

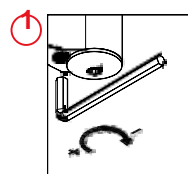
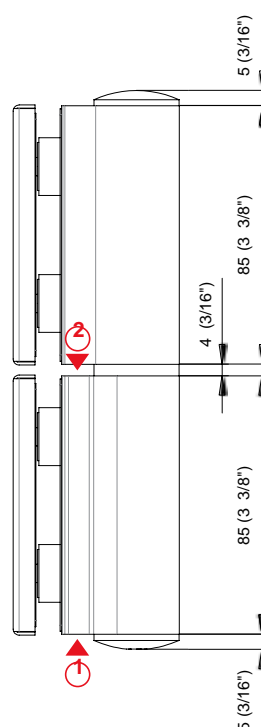
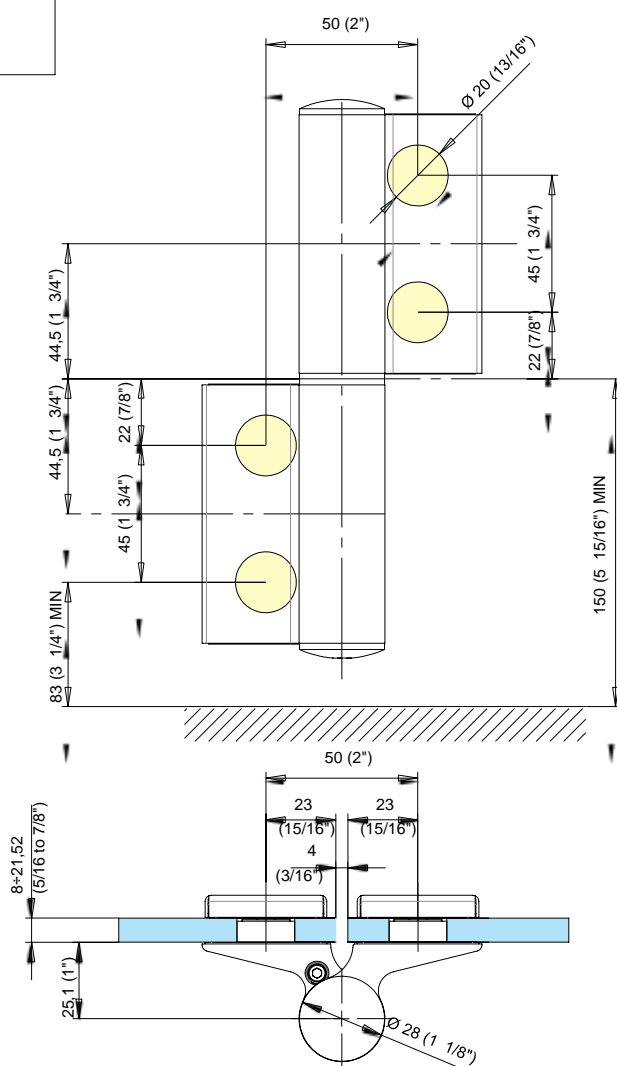
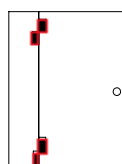


Hydraulic hinge glass to glass for doors with stop, with adjustable closing speed and consent braking control; the door opens up to 180°. Stop at +90° + 180°. Installed on doors with a profile on a stop. Jamb depth from 30 to 50 mm.

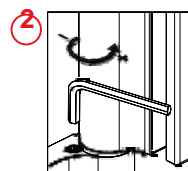
BGH 32- 835E50N (R)
BGH 32- 835E50N (L)



The hinge has a loading and it is therefore necessary a closing stop.



Final latch adjustment



Closing speed ajustement

BGH 33-101

Oil Dynamic Hinges



Oil Dynamic Hinges

BGH 33-101E10NF



BGH 33-100E20



BGH 33-100E25



BGH 33-A100E40

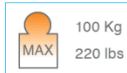
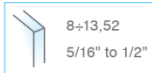
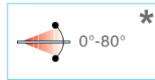


- The 101E series is also available in the version NF, without integrated braking system, for inner doors.
- These hinges combine a high technical quality and minimal design.
- They match to every type of patch fitting existing on the market
- They may have top hinges with same dimensions and design, both with wall and transom mounting (item 100E 20 and item 100E 25).



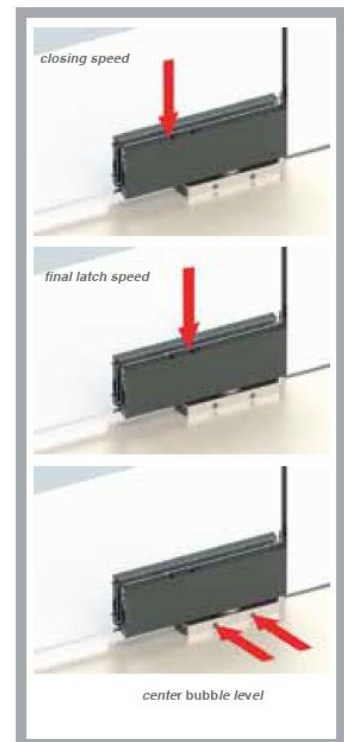
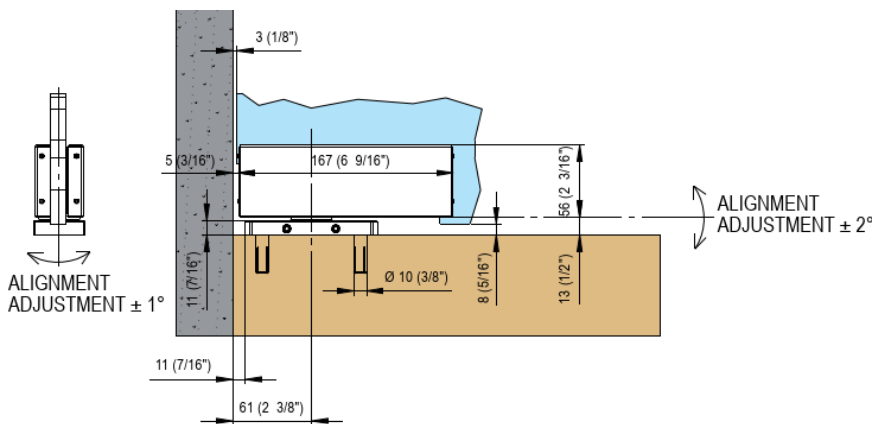
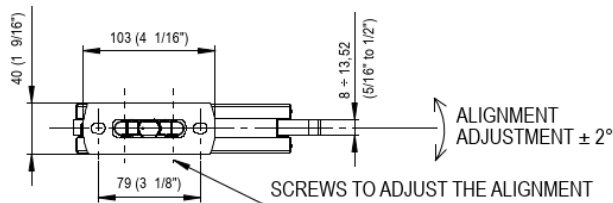
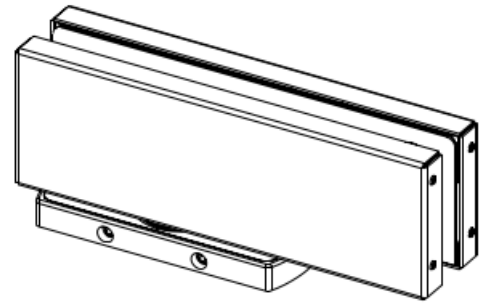
GLASS HINGES

BGH 33-101E10NF

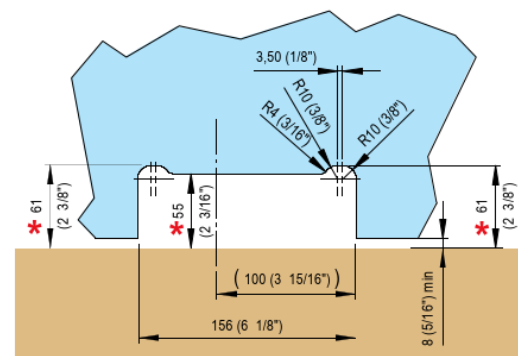
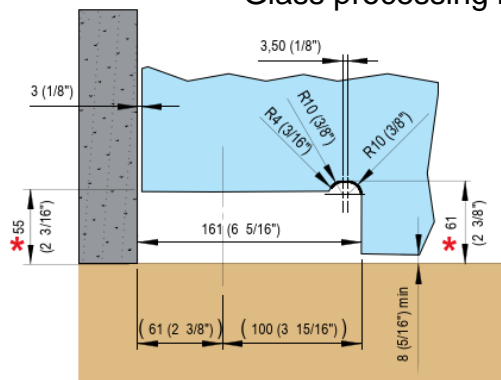


- Hydraulic hinge **without brake** but with closing speed & final latch adjustments.
- Can be combined with all patch fittings of the Maxima series.
- Useful also for pivoting applications. Stop at 0° +90° -90°

- The closing automatism kicks in within 70°-80° range.
- The closing is soft for the first 20° and becomes speed-adjustable from 60° up to complete closing.



Glass processing for pivoting applications

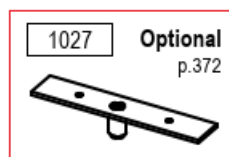
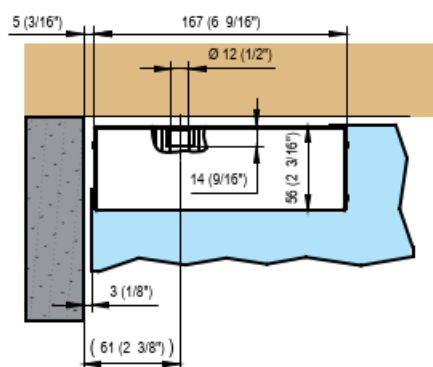
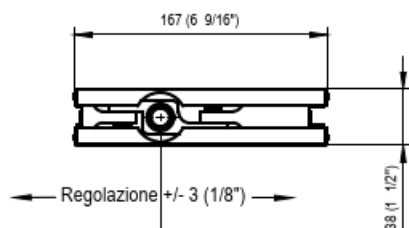
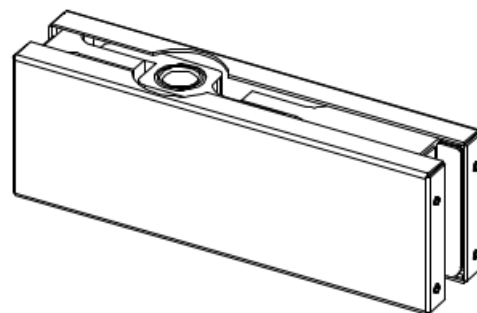


* DISTANCE FROM THE FLOOR

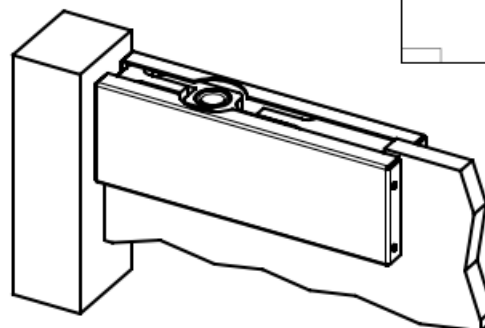
BGH 33-100E20

 8÷13,52 5/16" to 1/2"	 1000mm 39.37"	 100 Kg 220 lbs MAX
--	--	--

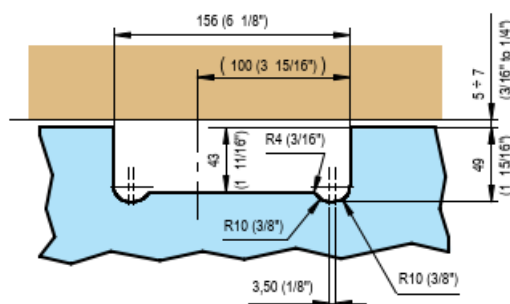
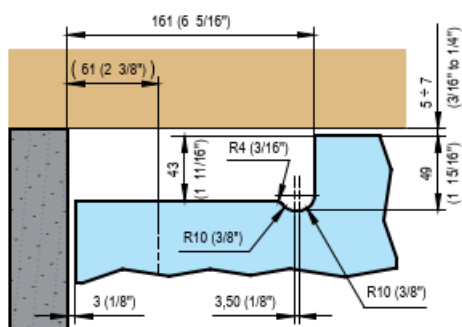
- Top Hinge



Optional
p.372



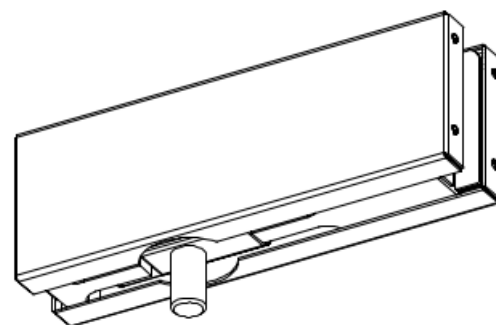
Glass processing for pivoting applications



BGH 33-100E25

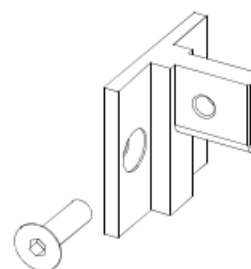
 8÷13,52 5/16" to 1/2"	 1000mm 39.37"	 100 Kg 220 lbs
--	--	---

- Transom link fitting for item 100E20.

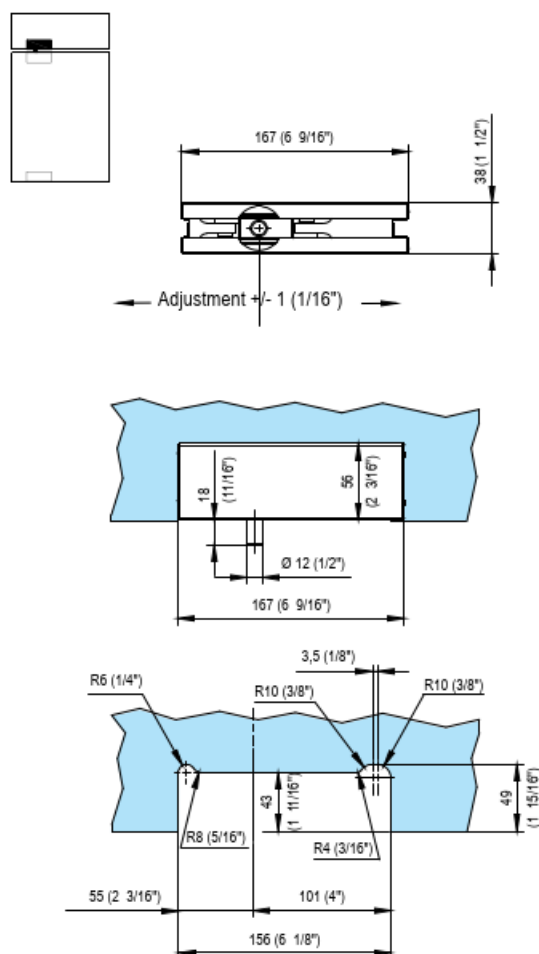


BGH 33-100E40

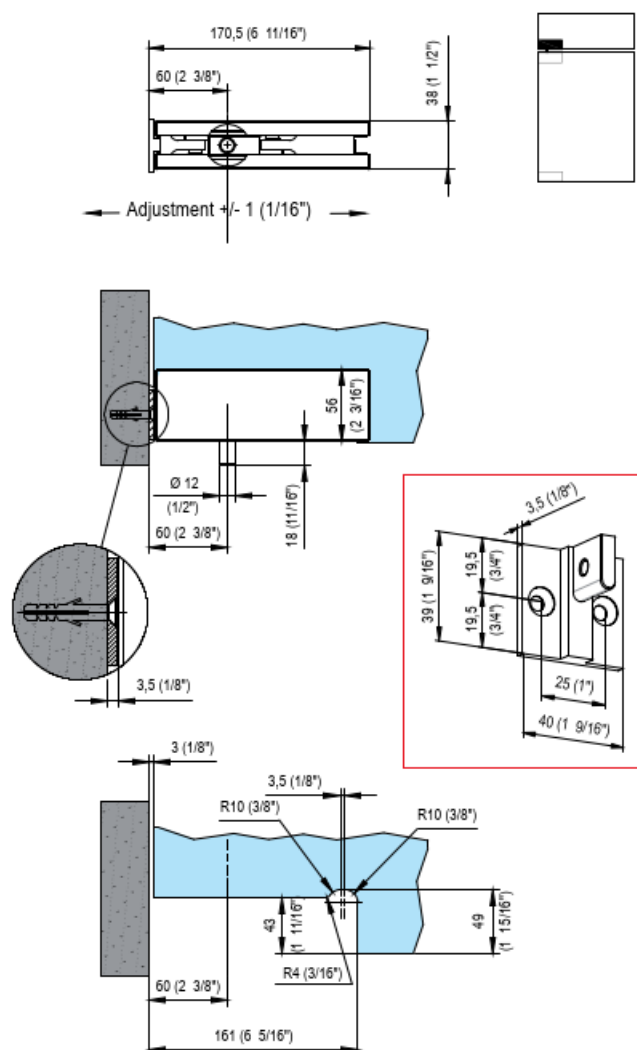
- Wall fixing accessory for item 100E25.



BGH 33-100E25



BGH 33-100E25+ BGH 33-100E40





BGH 33-106

Oil Dynamic Hinges



Oil Dynamic Hinges

BGH 33-106E10



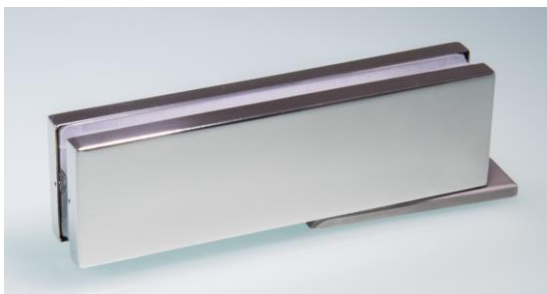
BGH 33-106E20/27



BGH33 is the new oil dynamic door closer hinge with automatic closing.

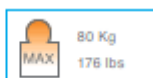
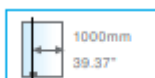
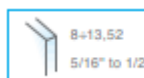
- Reduced dimensions and minimal design;
- Closing speed is pre-set and it is possible to make it slower;
- Suitable for inner applications;
- 0° point regulation;
- Turning point regulation;
- Quick-fixation finishing covers;
- Satin and polished stainless steel covers.

With an excellent quality-price ratio, BGH33 is sold in combination with the related upper hinge (106E20/27), which has the same dimensions.

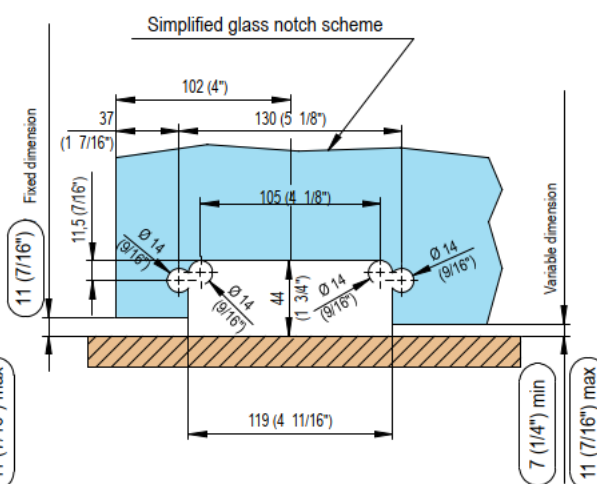
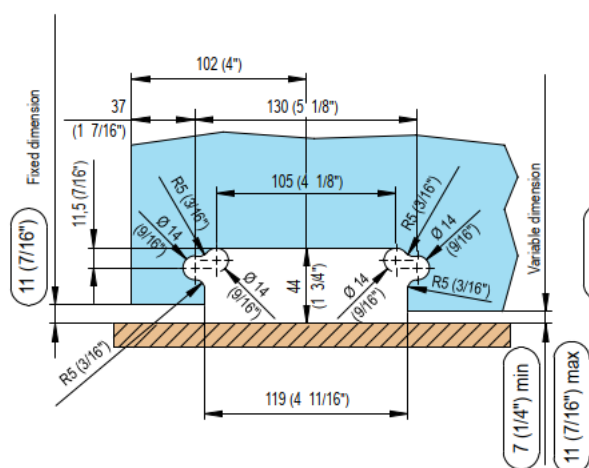
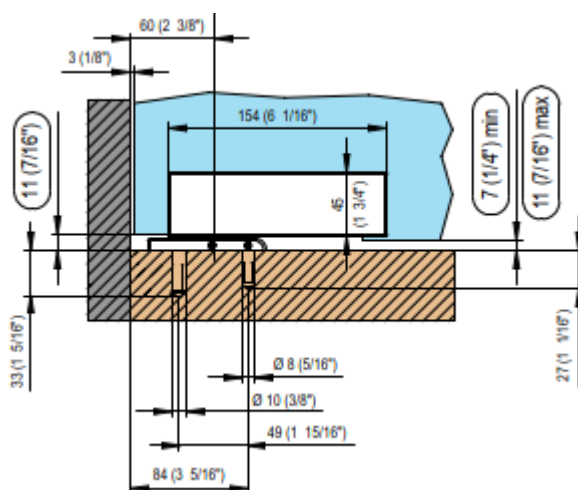
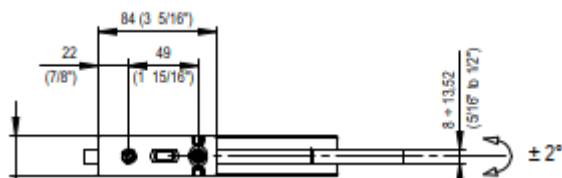
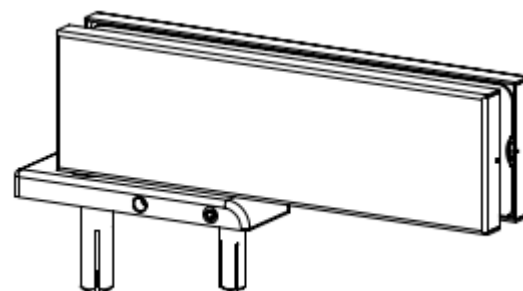


GLASS HINGES

BGH 33-106E10

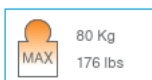
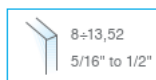


- Hydraulic hinge with predetermined, non-modifiable automatic closing.
- Stop at 0° +90° -90°.
- Suitable for doors with a stop.
- Combining the lower hinge with the upper one allows the reduction of closing speed of some seconds.

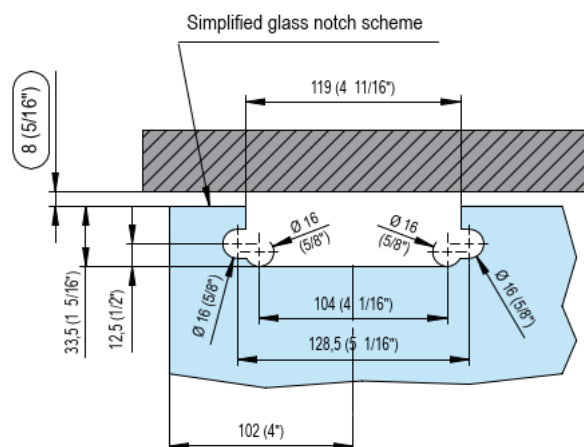
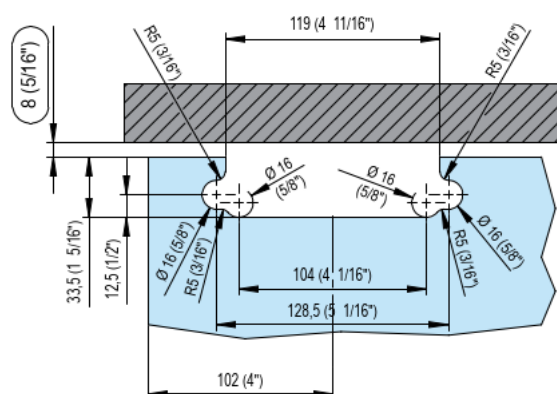
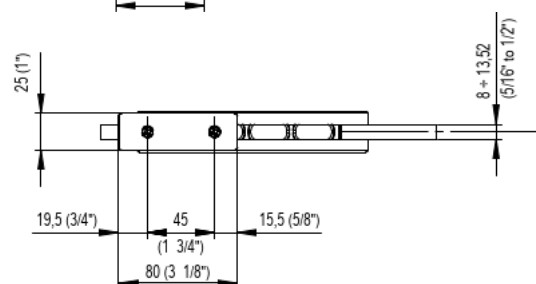
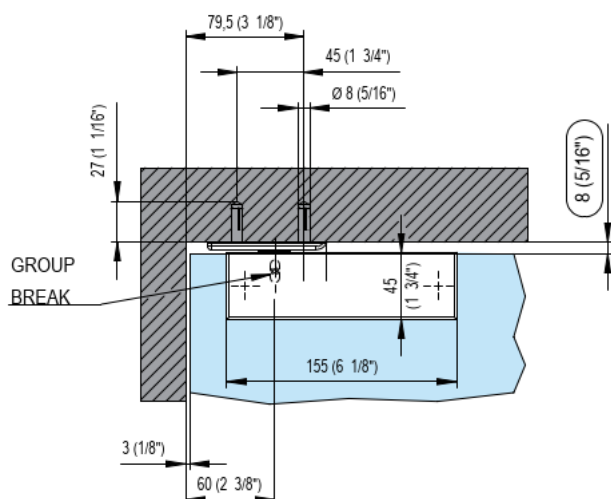
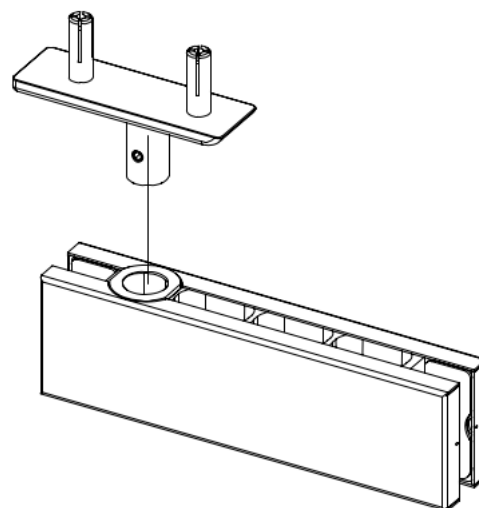


BGH 33-106E20

BGH 33-106E27



- Upper hinge with pivot and integrated braking system.
- To be used in combination with lower hinge art. 106E10



Thank you for your attention