



BW BLUE WEST
GmbH

2022

HOTEL SOLUTIONS
JOURNAL

For impressive entrances
For high quality solutions
For many applications



LOCKS	6	DOOR CLOSERS	51	WALLS & PARTITIONS	92	SHOWER CABINS	133
BW-J3080	8	BDD-1-775 BD	53	BLUE FEST	94		
BW-O3080	11	BDD-2-760 BSQ	55	BW ACOUSTIC	97		
BW-O3060S	14	BDD-D92	56	BW THERM	99		
BW-O3090	18	BDD-DS915	58	BW SAFE	103		
BW-O4010	20	BDD-DS96	60	FIXED WALL	104		
BW-D3030	22						
BW-S3074	24						
SAFES	26	HINGES	61	MANUAL SLIDING DOORS	110		
BW-O2010	28	BDH-2.05.064	63	BMS COMFORT	111		
BW-O2020	29	BDH-2.05.063.B	65				
BW-O2030PLUS	30	BGH-5.845E 10/20	67				
BW-O2040	31						
MINI BARS	32	MANUAL LOCKS	69	FIRE RATED DOORS	118		
BW-O35	34	BGL-DRON	71				
BW-40D	35	BGL-DGAL	72				
		BGL-DJUN	74				
		BGL-DARC	76				
ENTRANCE SYSTEMS	36	GLASS FITTINGS	78	PANIC BARS	122		
BW-S21	38	BGF-DMUN	80	BDE-3.20.951.K1	123		
BW-S20	40	BGF-DUNI	82	BDE-3.20.952.K2	125		
BW-ES200	42	BGF-DRP	86	BDE-1.20.957	126		
Revolving doors	44	NET PIVOT	88	BDE-F1.20.945	128		
BWW-100 / 250	49			BDE-1.20. 954.KIT	130		
				BDE-D2500	131		



BLUE WEST is an exceptional German company, specialized in commercial security and access solutions. We develop, produce, assemble, and market a complete range of sophisticated top end products, oriented towards openings. We are committed to the highest standards of quality and reliability in offering architectural solutions.

We continuously developing our extensive product range and services in conjunction with our reputable international production partners to ensure our customers benefit from the very latest global innovations. Our main objective is offering the ideal entrance solutions or security for all market segments like residential, commercial and institutional complexes .

We additionally customize solutions for customer needs in addition to our standard range of products. Through our architectural consultancy and specification services we support our partners to receive the best applicable product with commercial value in mind.



LOCKS





BW-J3080



BW-J3080 provides an easy-to use, secure, and flexible solution that is both visually attractive and high-performing. With its electronics concealed within the door, BW-J3080 visible hardware is minimal resulting in a lock design that integrates seamlessly with any hotel decor.

Motorized electronic lock with reader

Fire / smoke proof

Anti-panic function

Recommended for doors with heavy use

CE marking, Norms EN12209 / EN179

BW-J3080

Available Finishes





BW-03080



Design technology and innovation converge in **BW-03080** to provide an electronic hotel lock of high-performance. **BW-03080** incorporates an innovative access control technology, developed by BLUE WEST, which allows hotels to implement an unprecedented level of security and control.

Minimalist, thanks to its avant-garde and innovative design.

Customizable Design, designed for new doors, with a configuration allowing a free choice of handle, with all mechanisms, electronics and batteries located inside the door, a reader and customizable keyholes.

Unlimited Audit Trail, openings, opening attempts, exits, etc. Audit synchronized with the front desk PC.

Bluetooth, for guest openings, setting up, management and maintenance of the lock.

On-Line, remote opening and management by including Gateways in the installation.

BW-O3080

Available Finishes



PRIVACY



REVERSE HANDLE



3W

244

2
4
4

2
4
5

6

EXIT



BW-03060S



The BW-03060S electronic lock stands out for its slim design with narrow escutcheons that give the door and the room a plus of style and elegance.

Its high technological level combined with the opening via Bluetooth, MiFare proximity card and remotely online, through Gateway, make BW-03060S one of the models with the greatest projection in the hotel sector.

slim profile escutcheon, with narrow and straight lines for a minimalist aesthetic.
FINISHES: inox, black edition, white, gold, anti-bacterial

BLUETOOTH, for guest openings, setting up, management and maintenance of the lock.

remote opening and management by including Gateways in the installation.

electronic lock that adapts to existing mortise locks, even in narrow profile aluminum doors.

openings, opening attempts, exits, etc. Audit synchronized with the front desk PC.

BW-03060S

Available Finishes

**FINISHES**

INOX, BLACK EDITION
GOLD, WHITE, ANTI-BACTERIAL

**STRENGTH**

STAINLESS STEEL AISI 304 & 316

**DIMENSIONS**

38 x 300 mm





BW-O3090



Specially designed for Hotels, Offices and Residences, BW-O3090 integrates all security features into a single reliable and efficient device. The electronic proximity lock with the best quality/price ratio on the market.

Silent latch.

System of freely rotating lever in closed situation.

remote opening and management by including Gateways in the installation.

Anti-panic function, to guarantee emergency exits.

Anti-card device, to prevent undesired entries.



FINISHES

INOX, BLACK EDITION
GOLD, WHITE, ANTI-BACTERIAL



STRENGTH

STAINLESS STEEL AISI 304 & 316



DIMENSIONS

60 x 265mm

Available Finishes





BW-04010



BW-04010 electronic lock has been designed to adapt to existing mortises and modernize doors, providing them with a comfortable and safe access control system. Its remote management systems makes the electronic hotel lock **BW-04010** a perfect lock for small hotels, hotels without a 24h reception rural houses or decentralized tourist accommodation.

Once the reservation is confirmed, the hotel sends an electronic key and/or a code to the guest with validity as contracted on the reservation.

Opening, via Bluetooth, proximity card, code and online via Gateway.

Unlimited Audit Trail, openings, opening attempts, exits, etc.

Bluetooth, for guest openings, setting up, management and maintenance of the lock.

Privacy, privacy function to prevent entries of service persons.

Management, with OS ACCESS desktop software or RENT & PASS mobile APP.



OS ACCESS

Management software for hotels

upkey

Multifunction APP for workers and guests

RENT
PASS

APP mobile for holiday homes and hotels without 24-h reception





BW-D3030



The electronic door furniture **BW-D3030** is designed as flat as a mechanical door fitting, and lets you control access to the right areas at the right times. Its slim design has already been awarded with many design prizes. The **BW-D3030** is used on inside doors, and it is operated standalone, i.e. no wiring is required within the door because it runs with two standard batteries. Choose one of our system solutions suitable for you, depending on your requirements like the number of users and doors.

Flattest electronic furniture

Black or white cover

Narrow version for hollow profiled doors and wide version for solid leaf doors

Easy installation and fast replacement of mechanical door fitting

Choice of a large variety of access media: Access with card, key fob or key with RFID; use of smartphone

Combined with lever handle elements on the inside, the same look can be obtained on all doors (among others XEA Design)





BW-S3074



Electronic Hotel Lock
narrow body design

BLUE WEST
professional and innovative

BW-S3074 made of stainless steel, RFID technology model with separate reader, lock and cylinder, mifare 1K card, compatible with mifare energy saver, low battery warning (lower than 3.5 V), self-error detection with "Beep" , protection against vibration and moisture, CE and FCC certificate, ANSI standard.

Interface with most of the PMS system, Fidelio/Opera registered

CE & FCC Certified

Stainless steel color lasts more than 10 years

ANSI Standard mortise

Inside Deadbolt, Inside handle retracts latches and deadbolt

Multiple operators with different card issuing authorization

BW-S3074



SAFES





BW-02010



BW-02010 hotel safe facilitates management of the in-room hotel safe, offering high performance to satisfy demanding hotel guests.

general characteristics

Modern and elegant, the **BW-02010** safe stands out for its rubber backlit keypad in blue to facilitate its operation, whatever the room lighting may be. Comfortable and secure for the guest and operable for the hotel, it combines everything necessary for very demanding hotels.

Backlit rubber keypad and LED display in blue see color.

Motorized opening and closing.

Audit trail on display, by printer or with control unit for the last 100 openings and 100 closings.

Acoustic and visual signals to facilitate operation for persons with visual or hearing disabilities.

Door with opening spring

Emergency opening with:

Control unit with Bi-Code function which increases security. The control powers the hotel safe in the event that the batteries are exhausted.

Master code

Mechanical key

specific project options



110° wide opening



Left opening door



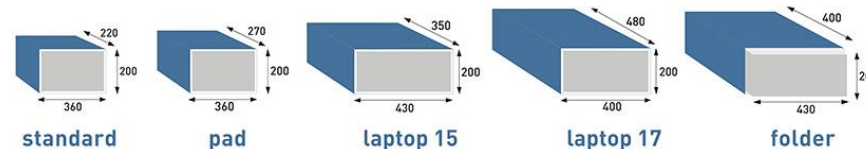
Change of dimensions



Change of colour, RAL chart



Opening with card, **BW-02010-Card** model



standard

pad

laptop 15

laptop 17

folder

BW-02010

BW-02010P

BW-02010L15

BW-02010L17

BW-02010F

BW-O2020



ACCESSORIES



Safe for hotel and office with advanced technological functions and with the highest security standards.

The BLUE WEST **BW-O2020** hotel safe allows you to simply and efficiently manage the security level offered to your guests, all electronically, as well as determining its use as free or under rental agreement.

An electronic hotel safe built of carbon steel, with motorized opening by code and confirmation of code and operation on the LED display. Hotel safe available in 7 sizes with front, top or front sliding opening.

Audit trail by software, by control unit or by printer for the last 100 openings and 100 closings.

Motorized opening and closing with configurable code of 4 to 6 digits

Emergency electronic delayed opening

Braille on keypad, acoustic and visual signals to facilitate operation for persons with visual or hearing disability

Low consumption LED interior lighting

Door with opening spring

110° wide opening hinge to introduce belongings without risk of damaging them

specific project options



Change of dimensions



Change of colour, RAL chart



standard

BW-O2010



pad

BW-O2010P



laptop 15

BW-O2010L15



laptop 17

BW-O2010L17



folder

BW-O2010F



avant 15

BW-O2010A15



avant 17

BW-O2010A17

BW-02030PLUS



ACCESSORIE



The BLUE WEST **BW-02030PLUS** hotel safe offers the balance between security, performance and comfort most requested by hotel guests and users.

The possibilities of managing the hotel safe in rental, showing the audit trail on display or printing audit trails make this a hotel safe that adapts to the most usual needs.

Hotel safe with high-visibility display and high security electronics. Easy to operate, with different methods of emergency opening and audit trails to resolve incidents, the hotel safe **BW-02030PLUS** represents versatility in hotel security and comfort.

Motorized opening and closing

Audit trail on display, and by printer for the last 100 openings and 100 closings

Customer code configurable, of 4 digits

Acoustic and visual signals to facilitate the hotel safe operation for persons with visual or hearing disability.

Door with opening spring

Emergency opening with:

Master code

Mechanical key.

Emergency electronic delayed opening.

specific project options



110° wide opening



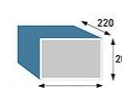
Left opening door



Change of dimensions

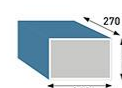


Change of colour, RAL chart



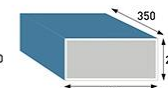
standard

BW-02030PLUS



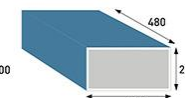
pad

BW-02030PLUS



laptop 15

BW-02030L15PLUS



laptop 17

BW-02030L17PLUS

BW-O2040



Installation
& management
with mobile APP



BI-MÁSTER
random
code

UNLIMITED
AUDIT

OPENING

Code | RFID | Bluetooth



Hotel safe with a high technological features.

Opening via Bluetooth, proximity tag and numerical code, plus Bluetooth management and maintenance; these are the identifying features of a hotel safe with a high technological DNA. Connectivity for the use and management of the hotel safe **BW-O2040** Installation, management and maintenance of the hotel safe via Bluetooth with a mobile app controlled by the hotel manager.

A hotel safe that guarantees the security of guests' property and gives you the extra convenience of being able to open the hotel safe with your smartphone, RFID tag or personal numerical code.

specific project options



Change of
dimensions



Left opening door



Change of colour,
RAL chart

Motorized opening and closing, with 4 to 6 digit customer code, RFID tag and Bluetooth.

Bi-Master with two code modes: fixed programmable and random single-use opening.

Emergency opening via:

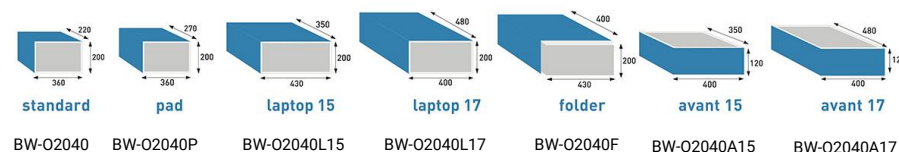
- Master code.
- Hidden mechanical key.

Different types of codes and Bluetooth authorizations: temporary, single use, permanent and cyclic.

ADA keyboard for the visually impaired.

Low consumption LED interior lighting.

110° wide opening hinge to insert belongings into the hotel safe without risk of damaging them.



MINI BARS





BW-035

Compressor hotel minibar equipped with an ultra-quiet, next generation compressor for hotels seeking a maximum performance minibar and high comfort level with minimum consumption.

Energy Efficiency: A++ (UE Norm 2020), C (UE Norm 2021)

EFFICIENCY

A++



RTC TIMER



24H COLD
LESS CONSUMPTION



PERFORMANCE



ELEGANCE



SAVINGS



General Characteristics

Energy Efficiency: A++ (UE Norm 2020), C (UE Norm 2021).

Technology: Ultra silent insulated compressor

Voltage: 220-240V (110V optional)

Power: 53 to 58 W

Standard Features

Auto-defrost

Low consumption interior LED

Additional hinge for left opening

Adjustable trays and bottle holders

Bottle holder for 1l bottle

Specific Project Options

Lock

Casters

RTC – Real Time Clock

Sliding guide

Glass door. Personalization optional

Dimensions

Model	Volume	Dimensions AxAxF	Consumption	Efficiency EU Norm 2020	Efficiency EU Norm 2021
BW-035	35 litres	510 x 382 x 456	0,133Kw/24h	A++	C
BW-045	45 litres	566 x 427 x 472	0,116Kw/24h	A++	D
BW-060	60 litres	640 x 550 x 560	0,26Kw/24h	A++	C

BW-40D

High performance with superior absorption new technology



BLUE WEST Absorption Minibar support 30 liter to 60 liter with black door and glass door

Features:

Cooling by ammonia

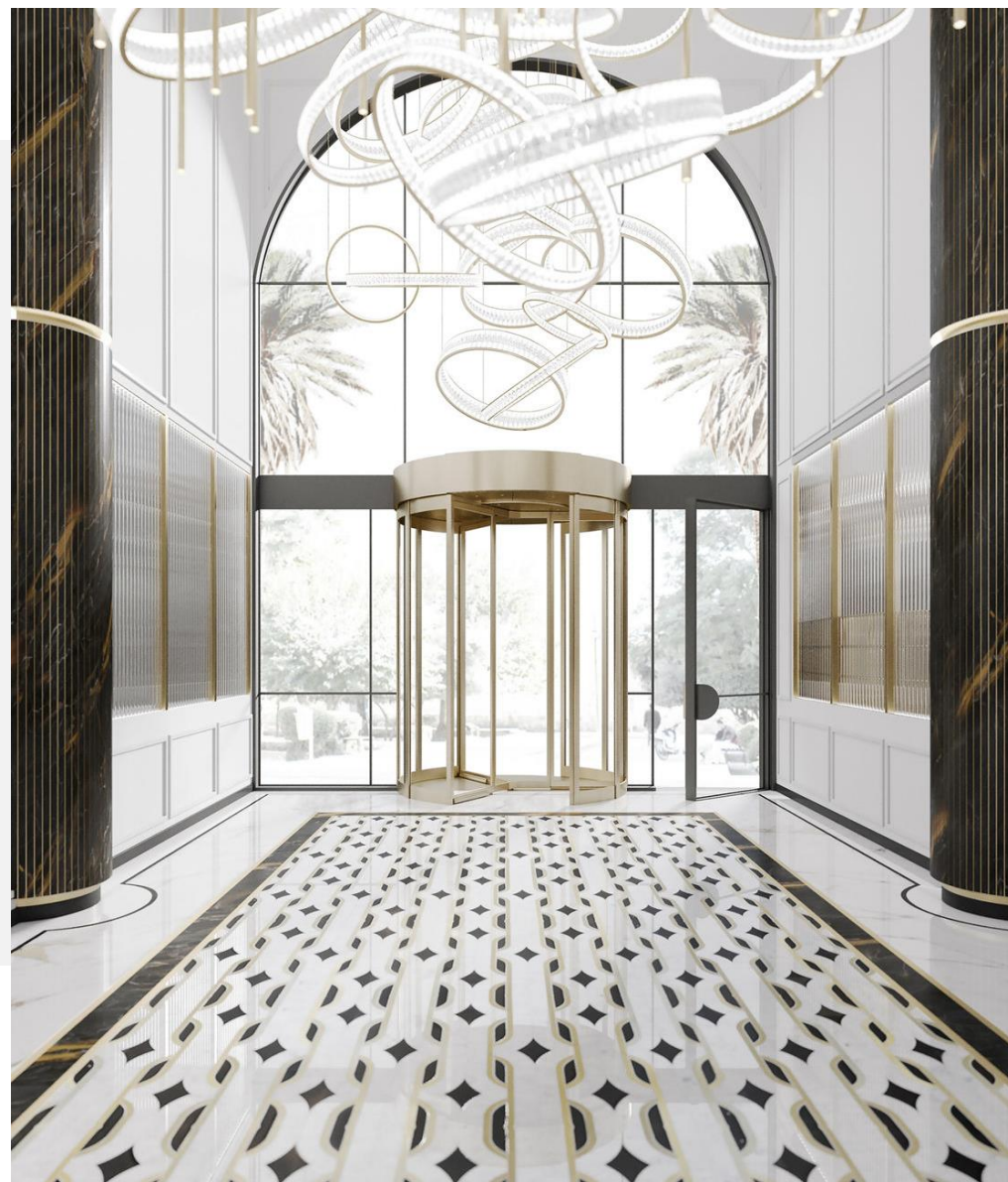
1.No moving part ,no compressor , no fan , no vibration , no noise(0 db)

2.Free maintenance & long life

Details

Model	BW-30D	BW-40D	BW-60D
Cooling Method:	Absorption	Absorption	Absorption
Storage Temperature (°C) :	0-12	0-12	0-12
Input Power(W):	65	65	65
Energy Consumption (kwh/24h):	0.9	0.9	0.9
Validity Capacity(L) :	30	40	60
Voltage(V):	AC220/110	AC220/110	AC220/110
Type of Controller:	Digital	Digital	Digital
Type of Door Seal	Removable	Removable	Removable
Net/Gross Weight(kg):	16/18	16/18	16/18
Shape Size(W*D*H)mm:	400*420*517	400*470*517	482*480*521
Packing Size(W*D*H)mm:	460*450*460	460*500*560	530*510*600

ENTRANCE SYSTEMS





BW-S21

Highly efficient and attractively designed automatic sliding doors product line BWS for exterior and interior.

Door Functions

- The doors can be left completely open
- The doors can be left completely closed
- Cancellation of one of the inner or outer radars
- Keeping the door 70 % open (winter position)
- Position Switch (Manual / Auto, single / double, on / off, full / half opening)

Activators

- Remote control (Standard)
- Safety Sensor (Standard)
- Active or passive microwave sensors (Standard)
- Fingerprint control (optional)
- Coded keypad and proximity (optional)

Optional Requests

- All anodized colors
- Stainless steel profiles and coating
- Different optional glass and color alternatives

Details

Door parameters

Single-panel sliding door	– Clear passage width LW	800 – 3000 mm
	– Door panel weight, max.	1 x 150 kg

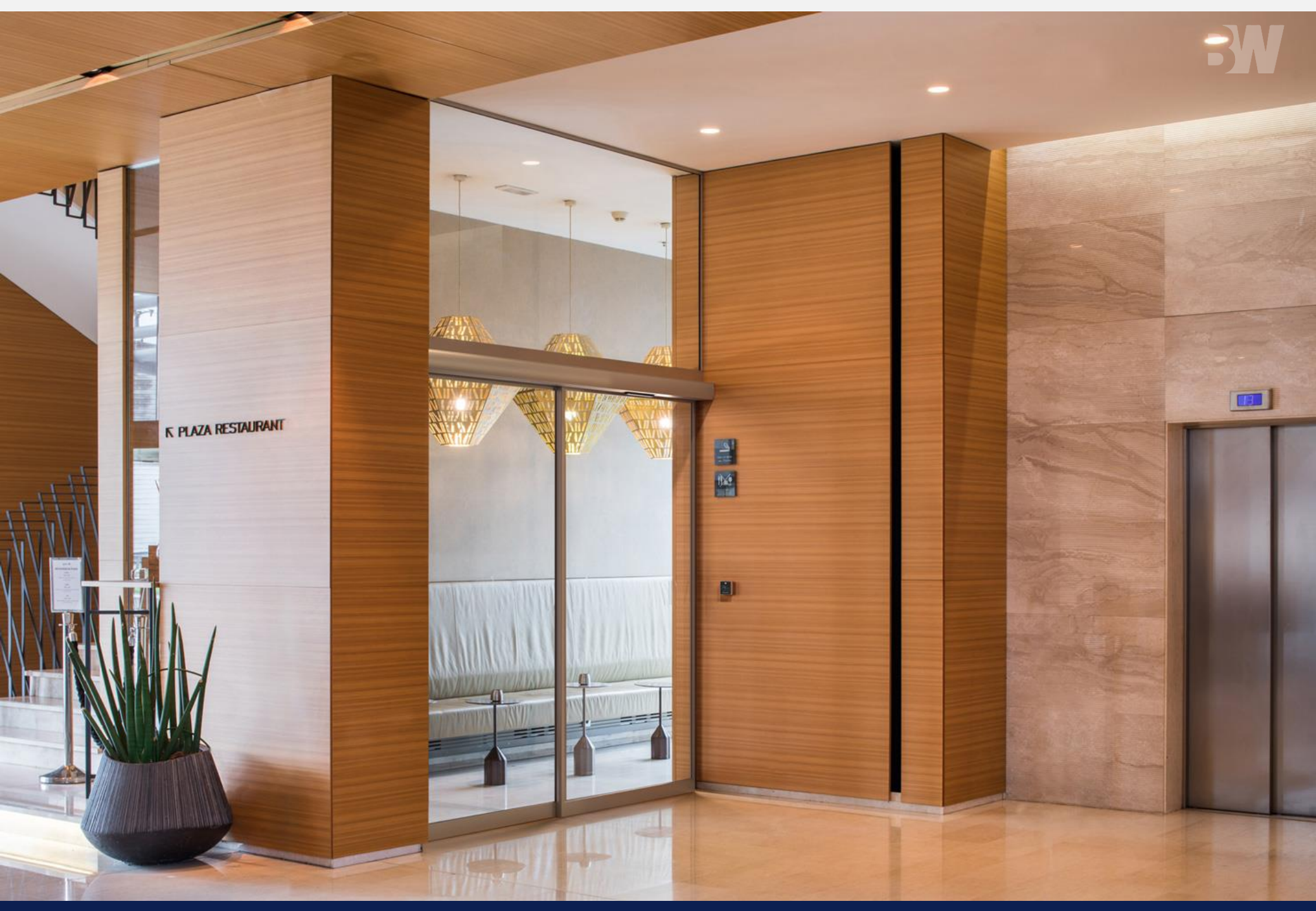
Double-panel sliding door	– Clear passage width LW	800 – 3000 mm
	– Door panel weight, max.	2 x 120 kg

Clear passage height*	2100 – 3200 mm
-----------------------	----------------

Technical data of operator

Motor Type	Brushless Dc motor
Height	8 - 12 cm
Installation depth	15 cm
Opening speed (incremental setting)	15 - 65 cm / s (single wing) 15 - 55 cm / s (double wing)
Closing speed (incremental setting)	10 - 45 cm / s (single wing) 10 - 43 cm / s (double wing)
Supply voltage, frequency	AC 80 V - 250 V (50 / 60 Hz)
Power consumption	70W
Class of protection	IP 54
Compliant with EU - Low Voltage Directive and EMC Directive	YES
Manufactured to ISO 9001	YES
Reliable activation and protection in automatic doors, with EN 16005 standard	YES

K PLAZA RESTAURANT





BW-S20

Product line BWS and its modern drive integrate into every building and meet the needs of even the most demanding users. Stylish, efficient and easy to use.

Door Functions

- The doors can be left completely open
- The doors can be left completely closed
- Cancellation of one of the inner or outer radars
- Keeping the door 70 % open (winter position)
- Position Switch with Digital LCD Display (Manual / Auto, single / double, on / off, full / half opening)
- SHOWING ERROR CODES

Activators

- Remote control (Standard)
- Safety Sensor (Standard)
- Active or passive microwave sensors (Standard)
- Fingerprint control (optional)
- Coded keypad and proximity (optional)

Optional Requests

- All anodized colors
- Stainless steel profiles and coating
- Different optional glass and color alternatives

Details

Door parameters

Single-panel sliding door	<ul style="list-style-type: none"> – Clear passage width LW – Door panel weight, max. 	800 – 3000 mm 1 x 150 kg
Double-panel sliding door	<ul style="list-style-type: none"> – Clear passage width LW – Door panel weight, max. 	800 – 3000 mm 2 x 120 kg
Clear passage height*		2100 – 3200 mm

Technical data of operator

Motor Type	German 63X55 Dunker Brushed DC Motor
Height	8 - 12 cm
Installation depth	15 cm
Opening speed (incremental setting)	3350 Rpm
Supply voltage, frequency	AC 230V (50Hz) ± 5%
Power consumption	100 W
Class of protection	IP 54
Admissible temperature	-15 ° C to + 50 ° C
Digital LCD Display for error codes	YES
Compliant with EU Low Voltage Directive and EMC Directive	YES
Manufactured to ISO 9001	YES
Reliable activation and protection in automatic doors, with EN 16005 standard	YES



CUATRECASAS



CUATRECASAS

Av. Diagonal 610 - 080



BW-ES200

The new, innovative BWS-ES200 SLIDING DOOR OPERATOR system offers the perfect solution for all applications and service requirements.

Door Functions

- The doors can be left completely open
- The doors can be left completely closed
- Cancellation of one of the inner or outer radars
- Keeping the door 70 % open (winter position)
- Position Switch with Digital LCD Display (Manual / Auto, single / double, on / off, full / half opening)
- SHOWING ERROR CODES

Activators

- Remote control (Standard)
- Safety Sensor (Standard)
- Active or passive microwave sensors (Standard)
- Fingerprint control (optional)
- Coded keypad and proximity (optional)

Optional Requests

- All anodized colors
- Stainless steel profiles and coating
- Different optional glass and color alternatives

Details

Door parameters

Single-panel sliding door	– Clear passage width LW	700 – 3000 mm
	– Door panel weight, max.	1 x 200 kg

Double-panel sliding door	– Clear passage width LW	800 – 3000 mm
	– Door panel weight, max.	2 x 160 kg

Clear passage height*	2100 – 3200 mm
-----------------------	----------------

Technical data of operator

Height	100 and 150 mm
--------	----------------

Installation depth	180 mm
--------------------	--------

Opening speed (incremental setting)	10 – 70 cm/s
-------------------------------------	--------------

Closing speed (incremental setting)	10 – 50 cm/s
-------------------------------------	--------------

Hold-open time	0 – 180 s
----------------	-----------

Supply voltage, frequency	230 V, 50/60 Hz
---------------------------	-----------------

Power consumption	250 W
-------------------	-------

Class of protection	IP 20
---------------------	-------

Compliant with EU Low Voltage Directive and EMC Directive	YES
---	-----

Manufactured to ISO 9001	YES
--------------------------	-----

Environmental product declaration in accordance with ISO 14025	YES
--	-----





Customized **Revolving door** with
invisible under floor drive. size
4'400x6'000 mm



BW All Glass Revolving Door

As works of art and defining landmarks, modern architecture demands an entrance that not only performs functionally but complements the design intent: unique yet elegant; leaving an impression that is lasting yet timeless.

Door Functions

- Intelligent control for safety and user-friendliness
- No-floor-pit structural design
- Manual free swing option anytime
- Unique features due to the gearless, beltless design of the drive technology
- Minimal wear-and-tear parts
- Minimal resistance when not powered
- Recovers easily from stoppages
- Faster, easier, mistake-proof commissioning
- Faster, easier troubleshooting/maintenance
- No need to keep the floor dry, e.g. during cleaning
- No underfloor maintenance
- No disruption to usage during maintenance work
- No need to think about pit size and position

Features

- Super thin made-in-Germany drive with proven electromagnetic propulsion technology, the first and only worldwide for revolving doors
- Elegant full-glass structure with heatsoaked glazing and minimal framing to ensure optimum transparency and structural reliability
- Eye-catching timeless design with minimalist illuminated halo for an enduring look
- High-tech image to the building's premium Branding
- Full-glass revolving door with top-mounted drive
- No floor pit and water drainage preparation needed as with conventional underfloor drives
- Door can be mounted on finished floors
- Easier to install and maintain

Details

Door parameters

Internal diameter(ID):	2000-3000
External diameter	ID +158
Passage height (PH):	2000-3000
Canopy height:	28 (17.52 laminated glass)
Total Height:	PH + 84

Traffic capacity

Internal diameter (D) (in mm)	Theoretical capacity person/hour <— —>		Maximum capacity persons/minute —>	
	3 wings	4 wings	3 wings	4 wings
2000	2520	3120	21	26
2600	3960	2640	33	22
3000	3360	4560	28	38



BW STANDARD AUTOMATIC REVOLVING DOORS

The STANDARD revolving door systems are perfectly suitable for installation in entrance areas where interior environment control coupled with elegant aesthetics are desired.



Benefits for the installer/fabricator

Flexible system to suit all requirements
Easy installation and rapid commissioning
Guaranteed state-of-the-art design and compliance with all regulations

Benefits for the architect/specifier

Extensive design flexibility in terms of planning and technical requirements
Visually, technically and economically the ideal solution.

Benefits for the user

Enhanced working conditions
Optimization of the building energy balance
Efficient noise protection

Features

- Three- or four-wing design
- Manual operation, positioning, Servo Matic or automatic drive system
- Flexible options (night shields, air curtain, locks etc.)
- Available with Direct drive system
- EN 16005 type approval and certification

Details

Door parameters

Internal diameter(ID):	2000-3800
Clear passage height	LH = 2,100 to max. 4,000 mm
Canopy height:	CH ≥ 100 to max. 1,000 mm

Traffic capacity

Internal diameter (D) (in mm)	Maximum capacity persons/minute →	
	3 wings	4 wings
2000	22	29
2200	20	27
2400	18	24
2600	34	23
2800	31	21
3000	29	39

Traffic capacity

Internal diameter (D) (in mm)	Maximum capacity persons/minute →	
	3 wings	4 wings
3200	41	36
3400	38	34
3600	36	32
3800	46	46





BWW-100 / BWW-250

The ED 100/250LE is an elegant electromechanical swing door operator ideal for room access and assistance on demand for various fields of application. The 'Wind Load Control' function is ideal for windy sites compensating for heavy wind loads. Suitable for emergency escape routes as well as use **on fire and smoke check doors**.

Benefits

- Flexible configuration: Customers only pay for the functions they actually require
- Inexpensive transportation and easy mounting thanks to the system's reduced weight
- Low-noise unit thanks to multi-stage gear
- Elegant visual appearance: BLUE WEST Contour design provides for an operator height of only 70 mm
- Various functions included as standard
- Field of application.
- For single- or double-leaf swing doors
- The pull version with slide channel and the push version with standard arm are both suitable for use on fire and smoke doors
- Thanks to its low- and full-energy versions, the system is suitable for automating both rarely and heavily frequented internal and external doors

- High torque for fully automatic swing doors with radar motion detector actuation

Features

Modular design and variable functional range
Automatic operation with "Wind Load Control"
Suitable for use on emergency escape and fire doors

Tested to 1,000,000 cycles

ED 100 - Door weights up to 160kg, door widths up to 1100mm

ED 250 - Door weights up to 400kg, door widths up to 1600mm

New: with integrated smoke detector

For single- and double-leaf swing doors

Details

Module

Operator

A compact and powerful unit.

Choose one of the following operator systems according to your individual door-leaf parameters:

BWW-100

EN 2-4 for door widths of 700 – 1,100 mm and a maximum door weight of 100 kg.

ED 250

EN 4-6 for door widths of 700 – 1,600 mm and a maximum door weight of 250 kg

BRC radio system

Easily operable via pushbutton.

BRC-R receiver

The receiver can easily be integrated in the standard operator.

BRC-H

hand-held transmitter Bi-directional system in new design.

BRC-W wireless wall transmitter (pushbutton-type)

Extra slim design, suitable for surface mounting.

BRC-T transmitter

Easy installation in commercial pushbuttons

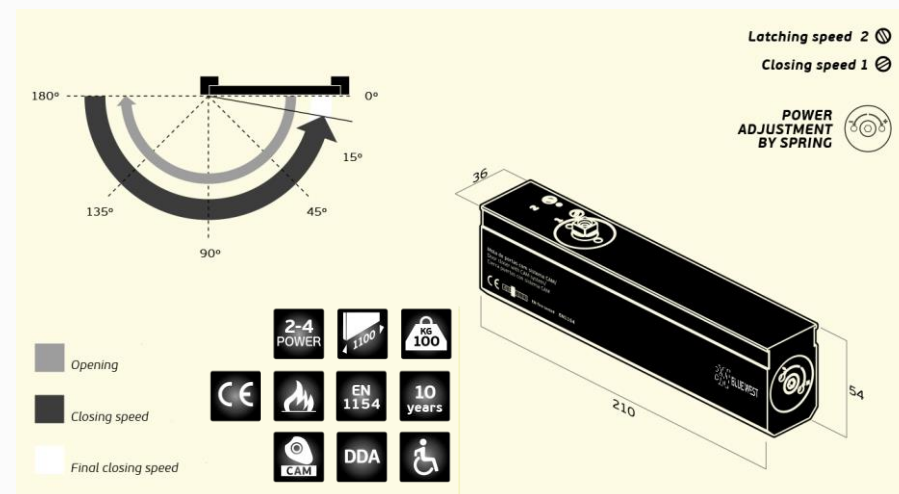


DOOR CLOSERS





CAM ACTION DOOR CLOSER : BDD-1-775 BD



Details

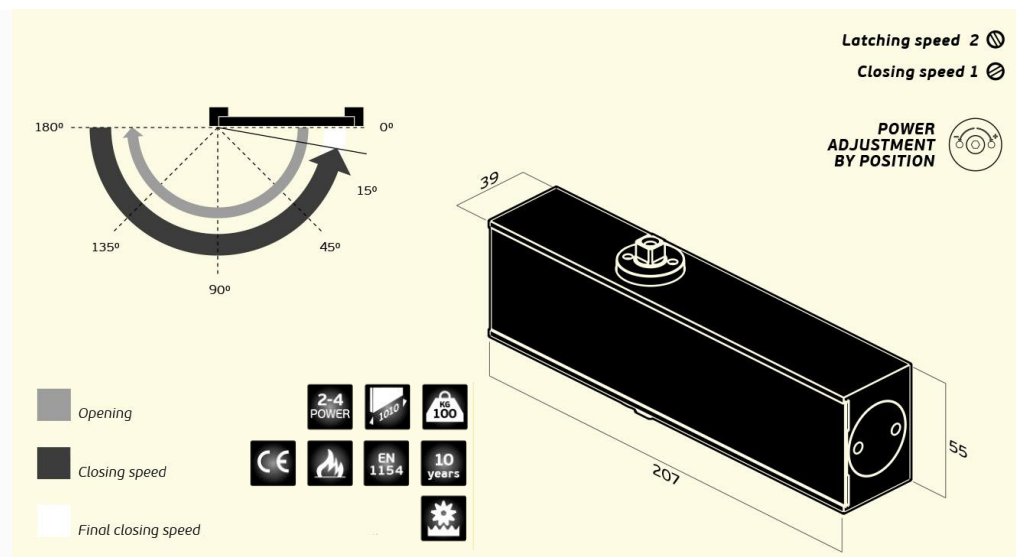
Door closer type	Hydraulic overhead door closer
Arm type	Sliding Arm
Adjustable Power	2 - 4
Maximum door width	1100 mm
Maximum door weight	100 Kg
Power adjustment	by spring
Mechanism	CAM action

Details

closing speed adjustable	by valve
Latching speed adjustable	by valve
Opening angle	180 °
Reversible door closer	YES
Certified Fire proof	YES
CE marking	YES



CAM ACTION DOOR CLOSER : BDD-2-760 BSQ



Details

Door closer type	Hydraulic overhead door closer
Arm type	Standard arm without retaining
Adjustable Power	2 - 4
Maximum door width	1100 mm
Maximum door weight	80 Kg
Power adjustment	by position
Mechanism	Rack and Pinion

Details

closing speed adjustable	by valve
Latching speed adjustable	by valve
Opening angle	180 °
Reversible door closer	YES
Certified Fire proof	YES
CE marking	YES

BDD-D92



Designed especially for BGF-DUNI interior applications, the BDD-D92 door closers in Contur design offer excellent ease of use due to their linear drive mechanism with the heart-shaped cam.

The Contur design ensures a uniform appearance in the complete building.

- Certified manufacture to ISO 9001.
- Especially for interior applications
- Door widths up to 950 mm (BDD-D91) / 1100 mm (BDD-D92)
- For single- and double-leaf doors
- Easy installation
- Quickly adjustable

Features

Benefits for the trade/distributor

- Inexpensive cam-action technology for standard interior doors
- Low storage costs and reduced inventory requirement thanks to uniform slide channels of the Contur series

Benefits for the installer/fabricator

- Non-handed
- Easy to fix and quickly adjustable

Benefits for the architect/specifier

- Excellent value for money
- Uniform appearance throughout the entire Contur slide channel range

Benefits for the user

- Exceptional ease of use and fully controlled closing action
- Optimum adaptability of the closing speed with reliable latching thanks to two regulating valves

Data and features

Closing force Adjustable	Size	EN 1–4
Standard doors	≤ 950 mm ≤ 1100 mm	– •
External doors, outward opening		–
For fire and smoke check doors		•
Non-handed design		•
Arm assembly type	Slide channel	•
Closing speed and latching action independently adjustable at two separate valves	180°–15° 15°– 0°	

• yes – no ○ optional

Data and features

Cushioned limit stay, mechanical		○
Hold-open		○
Dimensions in mm	Length Overall depth Height	281 47 65
Door closer tested to EN 1154		•
CE mark for building products		•



BDD-DS915



BDD-DS915 Cam-action door closer is designed and manufactured to high quality standards to meet the growing demand for an economical solution of high performance concealed overhead door closer with standard features.

- BLUE WEST Easy Open technology
- Optional hold-open
- Identical mounting position for both size 3 and 4
- Easy adjustment of two closing speeds
- Fire tested in accordance to EN1154

Features

Benefits for the architect / specifier

- Innovative engineering and design by BLUE WEST
- Compliance with statutory requirements for barrier-free building (UL listed, tested to EN1154)
- Unblemished appearance of prestige doors – concealed installation

Benefits for the trade / distributor

- Hassle-free ordering and inventory management – closer body (non-handed) and slide-channel arm assembly in one box for ease of handling

Benefits for the installer / fabricator

- Ease of installation - compact concealed cam-action (non-handed system) door closer with identical mounting position for both size 3 and 4
- Easy adjustment of the two closing speeds separately

Benefits for the user

- Barrier-free with BLUE WEST Easy Open technology - Easy access for all users and for children, seniors and the physically-disabled
- Convenience and Comfort - optional hold-open device and cushioned limit stay
- Enhanced protection against vandalism - concealed installation

Features		EN 3	EN 4
Standard doors	up to 950 mm	•	–
	up to 1100 mm	–	•
Fire and smoke check doors	up to 950 mm	•	–
	up to 1100 mm	–	•
Door leaf thickness		≥45 mm	≥45 mm
Max. door leaf weight in kg		60	80
Max. door opening angle		115°	115°
Dimensions in mm	Length	267	267
	Body Length	230	230
	Width	36	36
	Height	57	57
Non-handed design		•	•
Door Closer certified to EN 1154		•	•
C UL US listed		•	•
CE mark for building products		•	•

• yes – no ○ optional



BDD-DS96



The BDD-DS96 series offers the optimum solution for applications requiring concealed door controls. It is suited for virtually any door and frame combination in a variety of leaf thicknesses and configurations.

- Rapid decrease in opening force makes doors easy to open
- Efficient cam and roller design
- Non-handed
- Adjustable spring force size

Features

Cam and roller technology

The BDD-DS96 door closer's unique cam and roller technology meets the challenge of providing the operation and features necessary in a compact design.

Door applications

The BDD-DS96 Series is suitable for interior wood, hollow metal, and aluminum doors and frames. All BDD-DS96 models can be inverted to install the closer body in the frame. Maximum door opening is approximately 130°.

Certification

The BLUEWEST BDD-DS96 are listed by UL and CUL under their continuing reinspection programs. Meets the requirements for UL 10C for positive pressure. California State Fire Marshal (CSFM) approved. Meets the requirements of ANSI/BHMA A117.1 and ADA for barrier-free accessibility.

Data and features			
Variable closing force	Spring strength	EN 2–4	EN 3–6
Standard doors	up to 1100 mm	•	•
	up to 1400 mm	–	•
For fire and smoke check doors	up to 1100 mm up to 1400 mm	•	•
		–	•
Door leaf thickness	from 40 mm	•	•
	Non-fire doors from 50 mm	•	–
Max. door leaf weight in kg		130	180
Max. door opening angle (depends on door design)		approx. 120°	
Weight in kg		1.3	2.5
Dimensions in mm	Length	277	291
	Width	32	39.5
	Height	42	51
CE mark for building products		•	•

• yes – no ○ optional

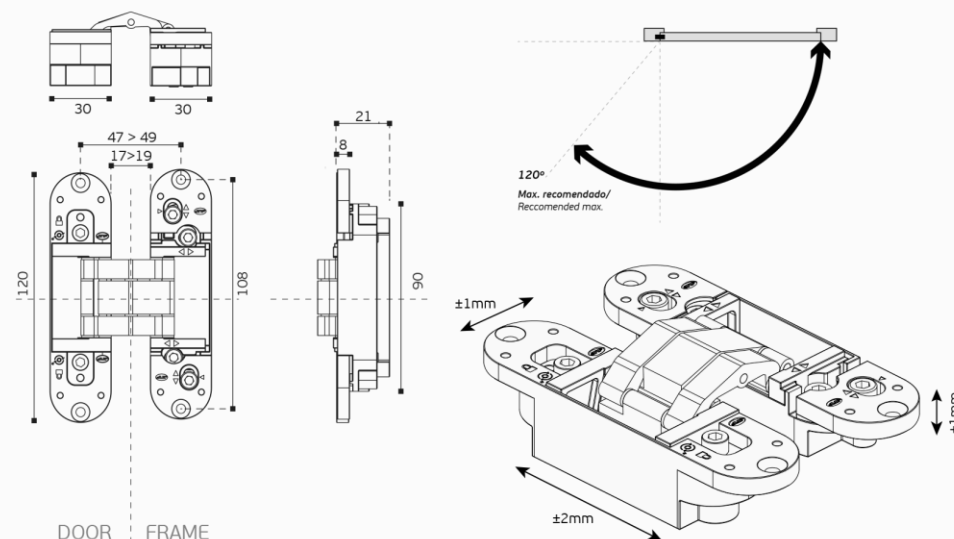
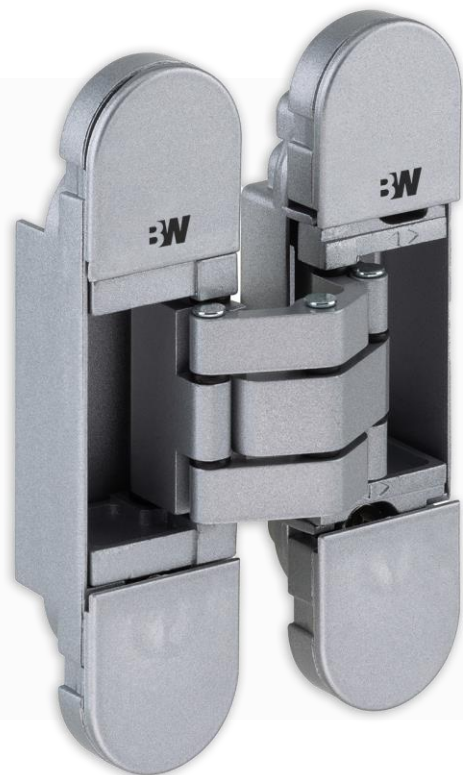
HINGES





BDH-2.05.064

Invisible hinge with 3D adjustment.



Finishes



3x

60
Kg

200.000 CYCLES

2x

50
Kg

200.000 CYCLES

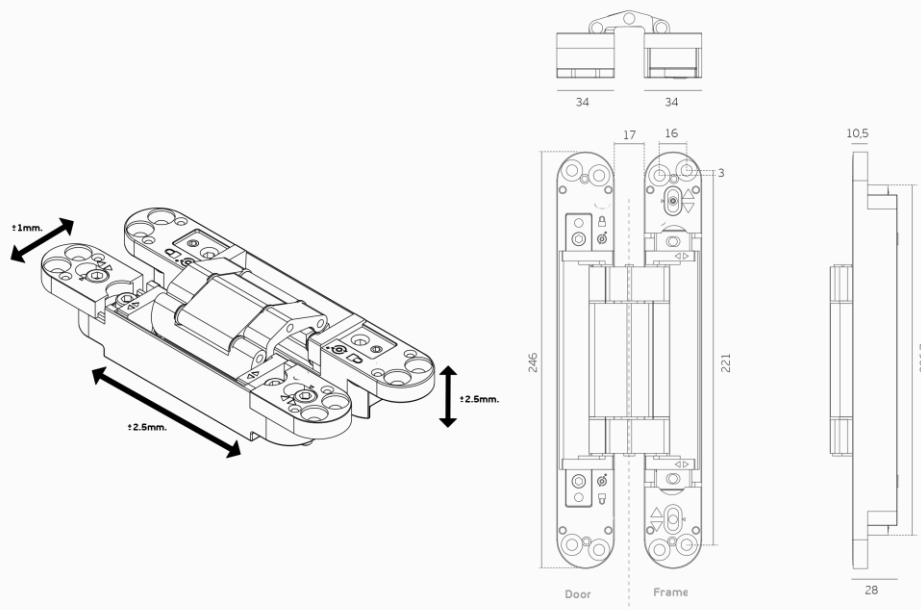


BDH-2.05.063.B

Invisible hinge with 3D adjustment.



Black Edition





BGH-5.845E 10**BGH-5.845E 20**

Hidden door closer hinges

The new hidden oildynamic doorcloser hinge, for framed doors with a stop. Upon customer request. This type is completely hidden into the profile, and adapted to every project.



BGH-5.845E 20
Upper hinge



Features:

- Hydraulic Closing;
- Invisible – hidden into the profile;
- Customizable, in order to satisfy every specific project;
- Adjustability of the closing speed;
- Height regulation +/- 3 mm;
- 90° Stop
- Minimum dimensions 25×25 mm.

The installation of the upper hinge is completed by the dedicated hidden lower hinge.



BGH-5.845E 10
Bottom hinge



MANUAL LOCKS FOR GLASS DOOR





BGL-DRON



- Lock insert with low-noise “whisper” functionality as standard. The whisper latch (study metal latch
- partially plastics-sheathed and damped latch motions for noise minimisation) satisfy particularly high expectations. Adjustable lever handle follower $+1,5^\circ / -1^\circ$, patent pending, for avoidance of “lever
- handle sag” (droop). Further on a special spring supported clamp follower holds the lever handle perfectly secure.
- The fully closed lock case provides optimum protection for the internal components which themselves are of rugged unit construction.
- Locks comply to the current DIN EN 12209.
- Moreover these locks were tested successfully by a neutral testing institute with 200,000 latch and 200,000 locking bolt operating cycles

BGL-DGAL



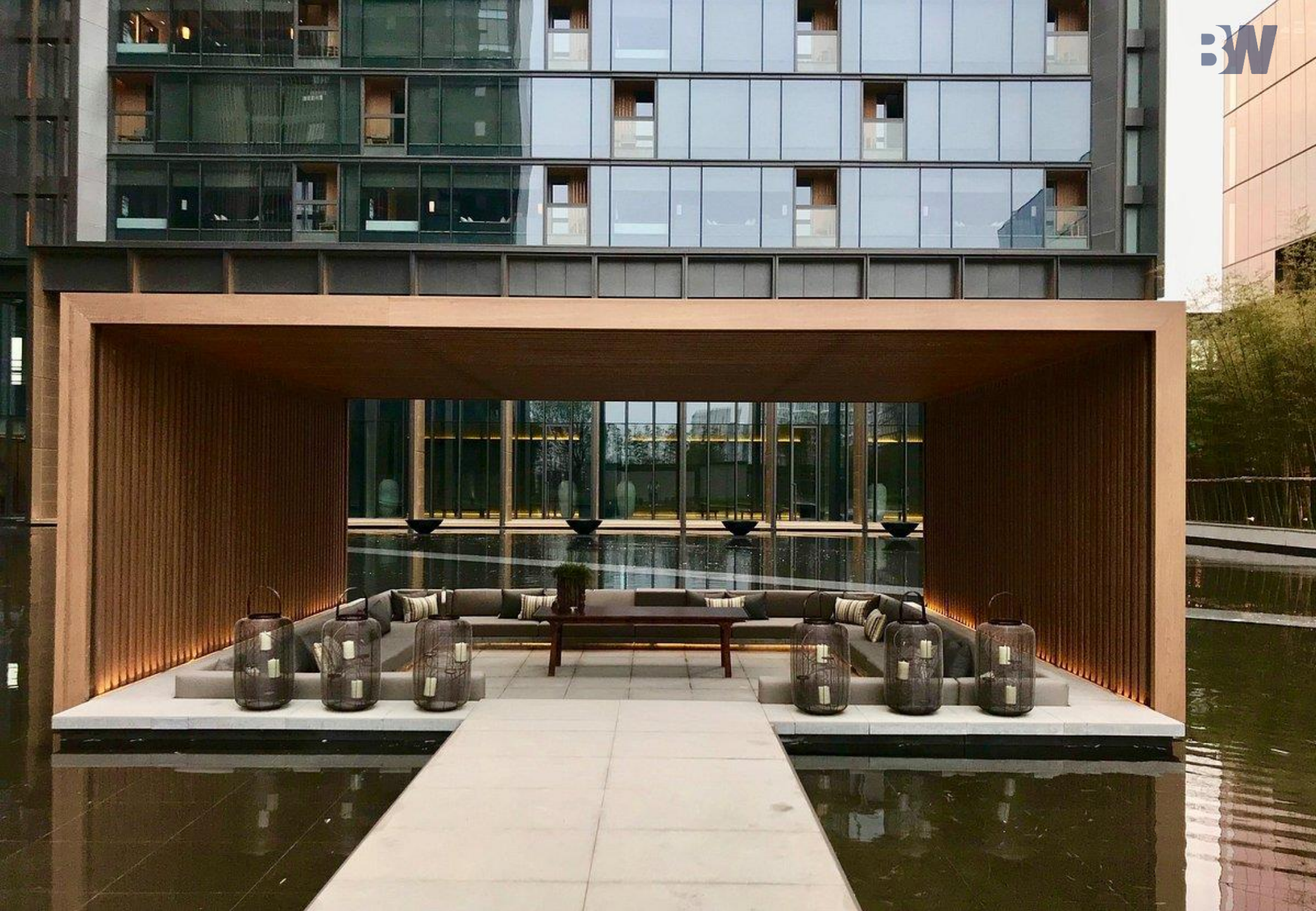
- Lock insert with low-noise “whisper” functionality as standard. The whisper latch (study metal latch – partially plastics-sheathed and damped latch motions for noise minimisation) satisfy particularly high expectations. Adjustable lever handle follower +1,5° / -1°, patent pending, for avoidance of “lever handle sag” (droop). Further on a special spring supported clamp follower holds the lever handle perfectly secure.
- The fully closed lock case provides optimum protection for the internal components which themselves are of rugged unit construction.
- Locks comply to the current DIN EN 12209.
- Moreover these locks were tested successfully by a neutral testing institute with 200,000 latch and 200,000 locking bolt operating cycles



BGL-DJUN



- Lock insert with low-noise “whisper” functionality as standard. The whisper latch (study metal latch – partially plastics-sheathed and damped latch motions for noise minimisation) satisfy particularly high expectations, including the requirements of government agencies and public authorities.
- Adjustable lever handle follower (+ / – 1°), patent pending, for avoidance of “lever handle sag” (droop). Further on a special spring supported clamp follower holds the lever handle perfectly secure.
- Locks comply to the current DIN EN 12209. They are designed for use in public buildings.
- Moreover these locks were tested successfully by a neutral testing institute with 500,000 latch and 100,000 locking bolt operating cycles.
- Special versions of the fitting manufactured in high-grade corrosion-resistant materials are available for wet room applications



BGL-DARC



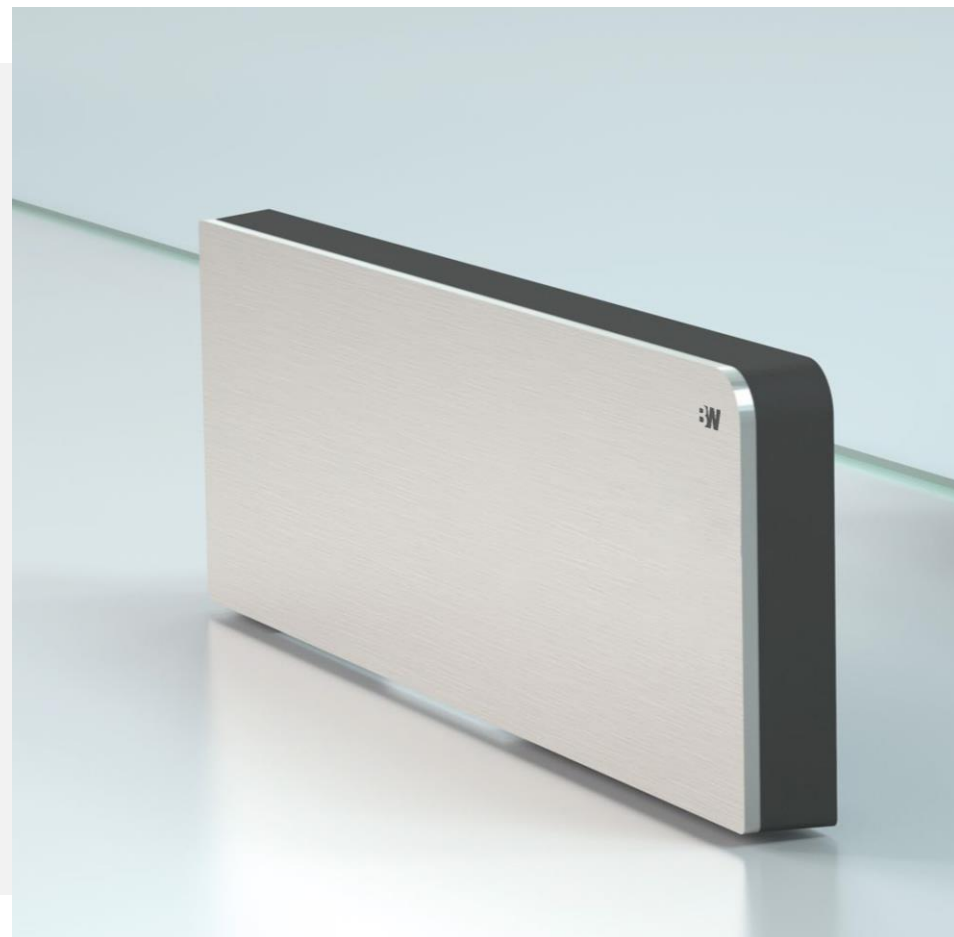
Complying to the current DIN EN 12209, successfully tested during extended type testing.

Locks supplied as standard for 8 mm glass thickness / 24 mm rebate depth, 10 mm glass thickness / 26 mm rebate depth resp..

- Lock insert with low-noise “whisper” functionality as standard. The whisper latch (study metal latch – partially plastics-sheathed and damped latch motions for noise minimisation) satisfy particularly high expectations, including the requirements of government agencies and public authorities.
- Adjustable lever handle follower (+ / – 1°), patent pending, for avoidance of “lever handle sag” (droop). Further on a special spring supported clamp follower holds the lever handle perfectly secure.
- The fully closed lock case provides optimum protection for the internal components which themselves are of rugged unit construction.
- Locks comply to the current DIN EN 12209. They are designed for use in public buildings.
- Moreover these locks were tested successfully by a neutral testing institute with 500,000 latch and 100,000 locking bolt operating cycles.
- Special versions of the fitting manufactured in high-grade corrosion-resistant materials are available for wet room applications.



GLASS FITTINGS



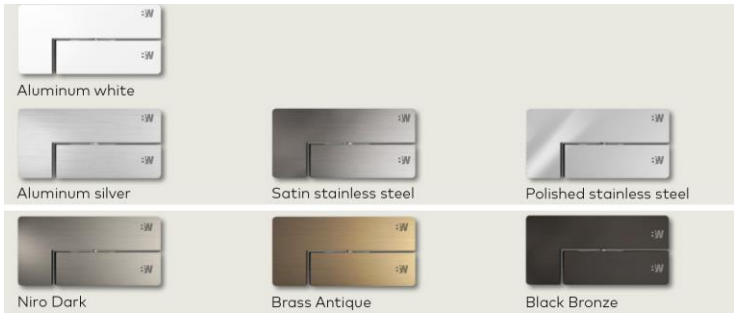


BGF-DMUN



- Clear design lines, no visible fixings
- Wide range of surface finishes, colours and materials
- Particularly easy to install: Many BGF-DMUN fittings can be mounted on the glass and fixed into place in their as-delivered condition
- Fast installation, simple in-situ adjustment of the installed system
- set up for the right glass thickness: adaptable to different glass thicknesses without the need to change gaskets
- Improved load-bearing performance and more secure hold thanks to high-strength materials (screws and threaded sleeves of high-grade stainless steel capable of absorbing high clamping forces)
- Use of laminated safety glass (LSG) using BLUE WEST’s proven Clamp&Glue technology for high quality and safety demands (BGF-DMUN Premium)

Available finishes



	BGF-DMUN Premium	BGF-DMUN Comfort
Max. load-bearing capacity	200 kg	150 kg
Max. panel width	1,300 mm	1,100 mm
Possible glass thickness	8 – 12 mm 12 – 15 mm 15 – 19 mm 19 – 22 mm	8 – 12 mm
Supported pivot points in mm	55, 65, 70 mm	55, 65, 70 mm
Offset adjustability in mm	Infinite (± 3 mm); 52 – 73 mm	Infinite (± 3 mm); 52 – 73 mm
Adjustability of the door/insert	Multi-dimensional	Multi-dimensional
Cover materials	Stainless steel, aluminum, glass etc	Stainless steel, aluminum



BGF-DUNI



With its broad spectrum of basic types and variants, the BLUE WEST BGF-DUNI range of patch fittings enables the creation of toughened glass constructions of almost any conceivable design. Toughened glass assemblies can be constructed with fixed part components in widely differing arrangements to suit double or single action doors in single leaf or double leaf designs.

- Easy glass preparation, secure fixing
- Suitable for common glass thickness
- Variable pivot point
- Reliability built in
- Matching range of locks
- Short delivery times

BLUE WEST BGF-DUNI fittings

These fittings are supplied as standard with gaskets to suit 10 mm and 12mm glass thickness. However, the fittings can be supplied to suit glass thickness from 8mm -19mm on request.

Suitable for most applications

The inserts for corner and overpanel patches in the BLUE WEST BGF-DUNI range have been designed and manufactured to give two options for the pivot point distance from the sidepanel or frame. It can be either 55 mm or 65 mm.

Easy glass preparation, secure fixing

BLUE WEST has an intimate knowledge of the special properties of glass as a building material. This has led to the design of fittings requiring only minimal glass preparation – a quick and easy cut-out with additional holes. Carefully considered and positive measures have been taken to create the maximum contact surface area for optimum clamping efficiency.

Matching range of locks

The BLUE WEST BGF-DUNI range includes every type of accessory and of course, a variety of locks and strike boxes in a matching design concept, giving the architect or specifier plenty of options to choose from.

Technical data

- Max. door leaf weight, 110 kg
- Max. door leaf width, 1100 cm
- Can be implemented with door rails up to 150 kg and 1400 cm









BGF-DRP



The popularity of concealed overhead closers has led BLUE WEST to furnish fully fabricated headers for every door and sidelite configuration. The RP Header System, which incorporate RTS overhead concealed door closers, offer the perfect solution for those who prefer the aesthetic advantages of a concealed closer.

- Modular system
- Innovative design and quality material
- RP Header System incorporates concealed overhead door closer
- Special damping system to protect the door against unwanted impact
- Integral hold open function

Features

BLUE WEST RP Patch Fittings with transom closer.

The BLUE WEST RP pivot door system works with a tubular transom profile in which the BLUE WEST RTS transom closer is integrated and concealed.

Attaches the all-glass door to the closer

This BLUE WEST RTS transom closer not only returns the door to the zero position each time it is opened, it also has a special damping system to protect the door against unwanted impact caused by over aggressive opening. In addition, the integral hold open, which also comes as standard, enables the door to be held open at an angle of 90°.

Innovative design and quality material

The popularity of concealed overhead closers has led BLUE WEST to furnish fully fabricated headers for every door and sidelight configuration.

Benefits for the architect/specifier

The perfect solution for those who prefer the aesthetic advantages of a concealed closer

Benefits for the trade/distributor

Applications

For indoor use, e.g.

- Doctor's offices
- Hotel rooms
- Office rooms
- Private residences





BW NET PIVOT DOOR SYSTEM



Thanks to the flexible modularity of the system, BLUE WEST BW NET offers architects and specifiers a free hand in implementing creative almost bespoke designs with space, vision and light as a foundation. The standard component is the single-point fixing which is countersunk into the glass and provides for a perfectly flush finish in all applications.

- High quality single-point fixings made of stainless steel
- Flexible modularity
- Available for several glass thicknesses
- Creative composition of light, space and vision
- Minimalist appearance

Features

Sliding door system

The BW NET sliding door system is ideal as an elegant addition to stylish interior concepts. Its main components take the form of a solid or tubular track rail and the roller carrier.

The range

The portfolio includes both glass-flush and proud single-point fixings. The sliding door system allows plenty of scope for individual ideas. In addition to the standard versions incorporated in toughened glass partitions or face-fixed on masonry openings, this hardware system can also be used to construct curved sliding doors, bi-parting sliding doors and parallel sliding doors.

Mechanical stops

Mechanical stops can be positioned on the track rail to ensure the door travel distance is effectively limited.

Easy installation

The system components come with numerous adjustment possibilities in order to ensure problem-free installation.

All the single-point fixings are designed for clip-on covers for easier installation.

Applications

- Insert for standard variants in toughened-glass partition walls or in front of wall openings
- Also suitable for curved sliding doors, divergent sliding doors and parallel sliding doors









❖ **MOVABLE & FIXED
PARTITIONS**

❖ **WALL SYSTEMS**



Concepts

FLEXIBILITY IS EVERYTHING!

BLUE FEST from BLUE WEST is an outstandingly versatile movable wall system that allows rooms to be adapted quickly and flexibly to changing usage requirements and group sizes. Wherever rooms need to be divided, reduced in size or enlarged, BLUE FEST demonstrates its special advantages. With a variety of system components, BLUE FEST offers individual solutions for practically any floor layout and application. Transparency and soundproofing can be combined with elegance, and the look, equipment and ease of operation can be selected according to requirements.



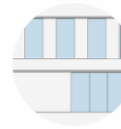
AUTOMATIC MOVABLE PARTITION

250
mm/s

High-speed travel to the
required position



ComfortDrive track drive system
with smart bus technology



Individually programmable for
flexible room management

STOP



Reliable safety with system stop
and reverse on contact with
obstructions



BW



FUNCTIONS

The visual appearance shapes the character of a room

With an almost infinite choice of designs and colors to meet even the most sophisticated design and layout specifications, Bluewest BLUE FEST comprehensively translates creative ideas into reality.

The BLUE FEST system is able to satisfy the most demanding aesthetic needs with a multitude of style options. In addition, the high-quality materials and their visual effect are unsurpassed.

Wide choice of high-quality materials

A broad array of finishes – from laminated surfaces and hardwood veneers to write-on magnetic surfaces and mirrors – guarantee the desired visual appearance for many years to come.

The use of exquisite materials alone or in combination can give a particularly attractive look.

R_w
58 dB

Sound reduction ratings up to R_w 58 dB with optimised profiles and seals.



Low specific weights per unit area for easy handling and obvious structural advantages



Smaller-dimensioned stacking areas and parking niches



Decorative melamine finishes from the "Classic Collection"

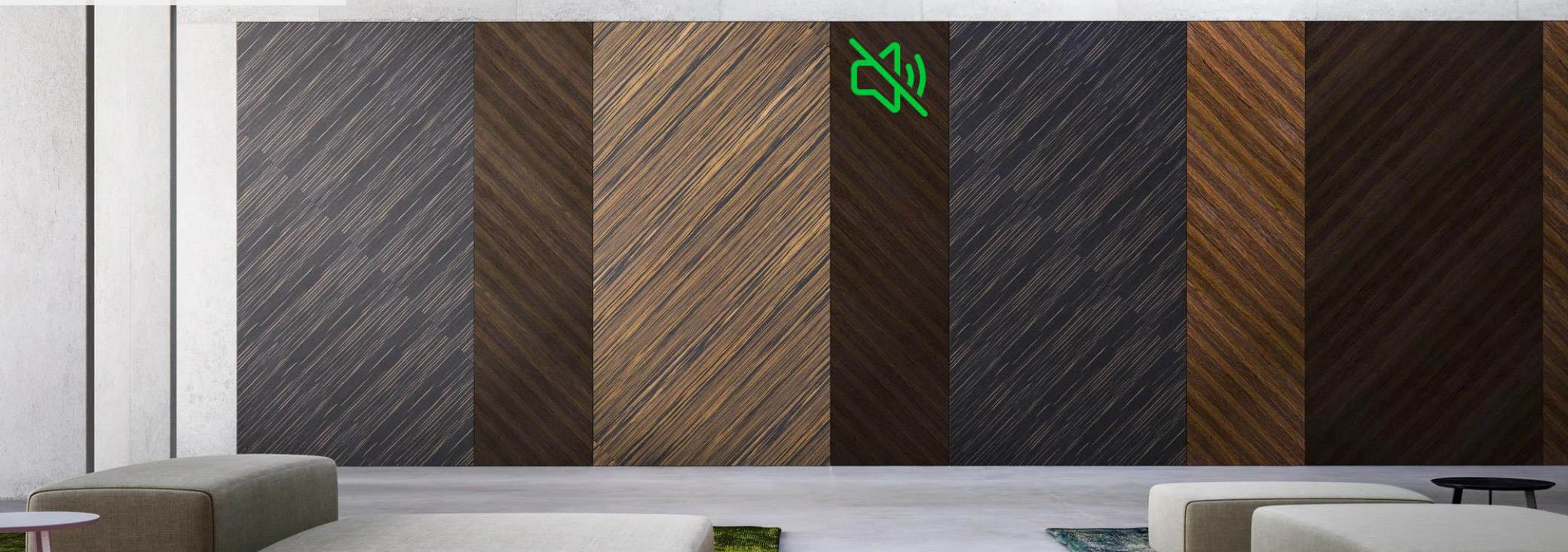
MOVABLE PARTITION



BW

QUALITIES

LEADING THE FIELD IN SOUND INSULATION



An excellent solution for parallel events

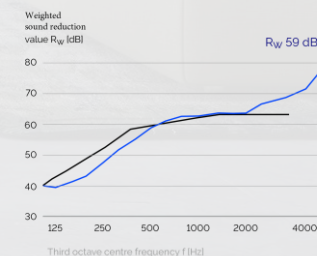
As well as having the function of visually sub-dividing areas, movable partition walls also have the role in many applications of filtering acoustic signals in order to prevent noise disturbing the users of the other rooms. Room partitioning with reliable acoustic insulation properties is a must, particularly when events run concurrently.

The BLUE WEST BLUE FEST system ensures unsurpassed sound insulation without compromising ease of use. As freely oscillating elements, the clip-on fascia boards reduce the transmission of structure-borne noise, thus ensuring extremely high acoustic performance.

Weighted sound reduction

Enhancing the well-being of room users

Special acoustic panels increase sound absorption and reduce reverberation. These advantages, coupled with the high quality standards and visual impact of BLUE WEST BLUE FEST, greatly enhance user comfort and offer incomparable benefits for areas where people come together to communicate.



ACOUSTIC MOVABLE PARTITION



Absorbs noise to create an improved in-room ambience



Exceptional absorption values



Wide range of surface finishes and a variety of perforation patterns



E1 quality committed to ensuring a healthy interior and environment

BW THERM SLIDING WALL SYSTEM

The BW Therm horizontal sliding wall system is a good choice wherever greater temperature differences must be separated from each other. Thanks to its easy latch operation on the pivoting/sliding panel, the BW Therm makes it really simple to switch the panel function in an instant. All other function elements are invisibly integrated into the re-designed, linear frame system.



Features

- Thermally-insulating closure due to circumferential frame profile with thermal separation at all panels
- A convenient movement for switching from the sliding to door functionality on the pivoting/sliding panel.
- Panel height up to 3500 mm (pivoting/sliding panel up to 3000 mm)
- All pivoting/sliding panels are equipped with the **BDD-DS96** with a hold-open device, which is invisibly integrated into the door profile.

Standards

Heat protection	<ul style="list-style-type: none">• Heat transition coefficient in accordance with DIN EN ISO 10077-1,• -2UD [W/m²K] = 1,8
Endurance strength	<ul style="list-style-type: none">• Class 3 in accordance with DIN EN 1527, corresponds to 25,000 cycles for hanging sliding doors > 100 kg• Class 3 in accordance with DIN EN 1191, corresponds to 20,000 cycles for door function for pivoting double-action panel, pivoting double action sliding panel and single-action door
Impact test	<ul style="list-style-type: none">• Class 5 (highest achievable class) in accordance with DIN EN 13049 (simulation and impact loads)
Corrosion test	<ul style="list-style-type: none">• Class 4 in accordance with DIN EN 1670 (proximity to coast)



**VERTICAL MOVABLE
WALL SYSTEM**



MOVABLE WALL SYSTEM

BW



BW SAFE SLIDING WALL SYSTEM

BW SAFE offers enhanced convenience and security for the installer and user. The new door rail enables an effortless and time-saving installation thanks to proven Clamp & Glue technology. Suitable for toughened glass thicknesses 10-19mm with optional safe use of laminated safety glass for added safety.



Features

The new 3-in-1 multi-lock offers three options for secure locking. Additional intelligent solutions like a status display, a concealed door closer and double brush seals to minimise drafts, ensure more convenience and security. Extensive design freedom allows adaptation to any interior ambience.

- Hassle-free installation thanks to new Clamp & Glue technology
- Enhanced safety in use with laminated safety glass (LSG)
- 3-in-1 multi-lock gives more locking possibilities in one component
- New status display clearly shows the locking status of the door panel
- Less draft, greater comfort with innovative double brush seals
- Glass panes can have the following glass thicknesses: 10mm, 12mm, 12.8mm, 13.5mm, 15mm, 17mm and 19 mm.

DATA

Max. system height:	4000 mm
Max. panel width:	1250 mm
Max. panel weight:	150 kg Seamlessly accepts glass thicknesses ranging from 10 to 19 mm
Tested and certified:	Wind load (frame bending): EN 12211 Class 1 Fatigue strength: DIN EN 1527 Class 2 and DIN EN 1991 Class 3 Shock test: DIN EN 13049 Class 5 (highest class) Corrosion test: DIN EN 1670 Class 4 EPD (Environmental Product Declaration): ISO 14040

FIXED WALL SYSTEMS

Designed by: Studio CSLB -
Caroline Sarkozy - Paris



FIXED WALL SYSTEMS

Design: Verhamme + De Vel
Architecten
Hotel Damier



3W

FIXED PARTITIONS

Architects: Foster + Partners
RMK
JEKATERINENBURG, RUSLAND



FIXED PARTITIONS

Architects: Foster + Partners
RMK
JEKATERINENBURG, RUSLAND



FIXED WALL SYSTEMS

3W





MANUAL SLIDING DOORS



BMS COMFORT

The compact, flexible manual sliding door system













BW



FIRE RATED DOORS









PANIC BARS

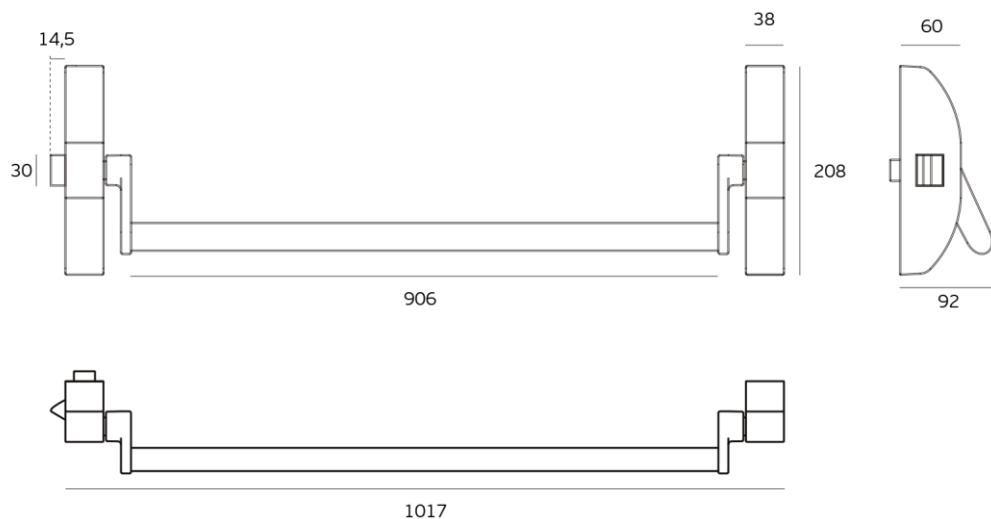


BDE-3.20.951.K1

PANIC EXIT DEVICES FOR GLASS DOORS



Reversible anti panic door lock for single glass doors. Closing system through a side latch. Without access from external side.



PANIC EXIT BAR FOR GLASS DOORS

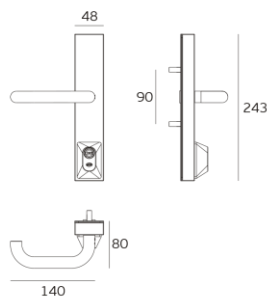
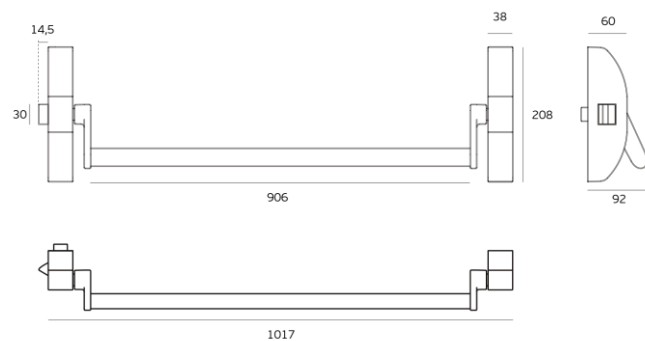


BDE-3.20.952.K2

PANIC EXIT DEVICES FOR GLASS DOORS



Reversible anti-panic door lock for single glass doors. Closing system through a side latch. Opening by key from the outside. Lever handle with plate and cylinder included.

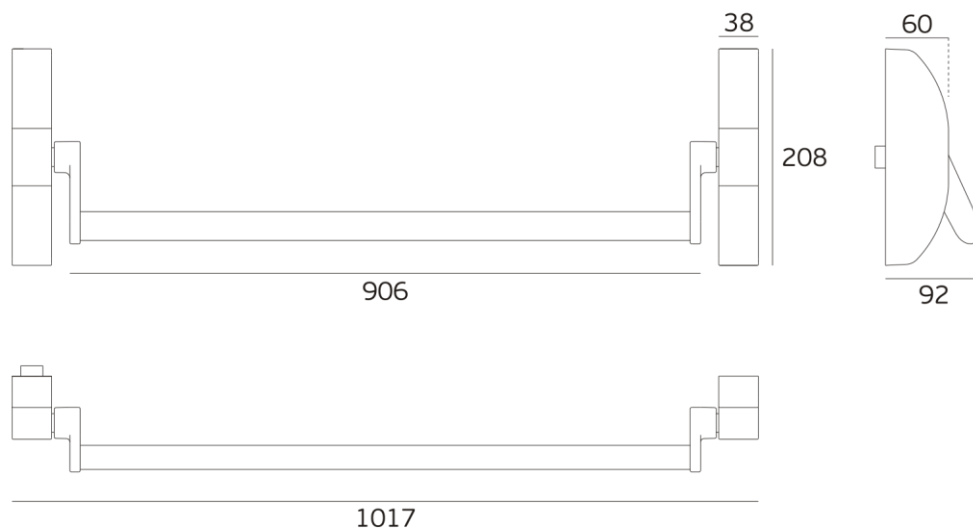


BDE-1.20.957

ANTIPANIC LOCK



Reversible panic exit device for single doors. Without side latch.
 Applicable with mortice door lock BDE-1.20.960/BDE.1.20.960.C.
 Opening by key from the outside.
 Lever handle with plate and cylinder not included



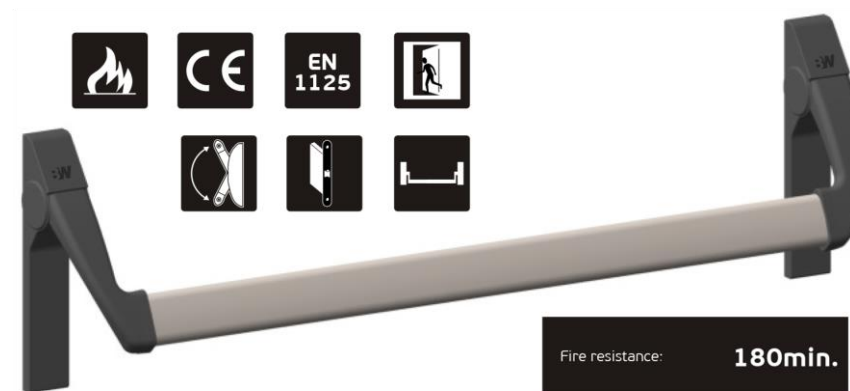
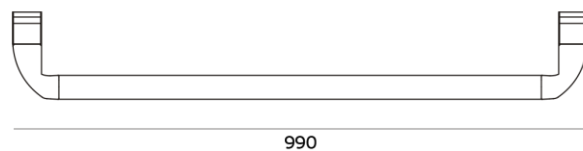
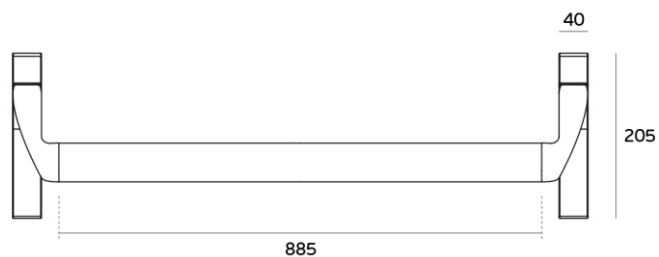


BDE-F1.20.945

ANTIPANIC LOCK



Reversible anti-panic door lock for single doors. Without side latch. Applicable with mortise lock .Opening by key from the outside. Lever handle with plate and cylinder not included

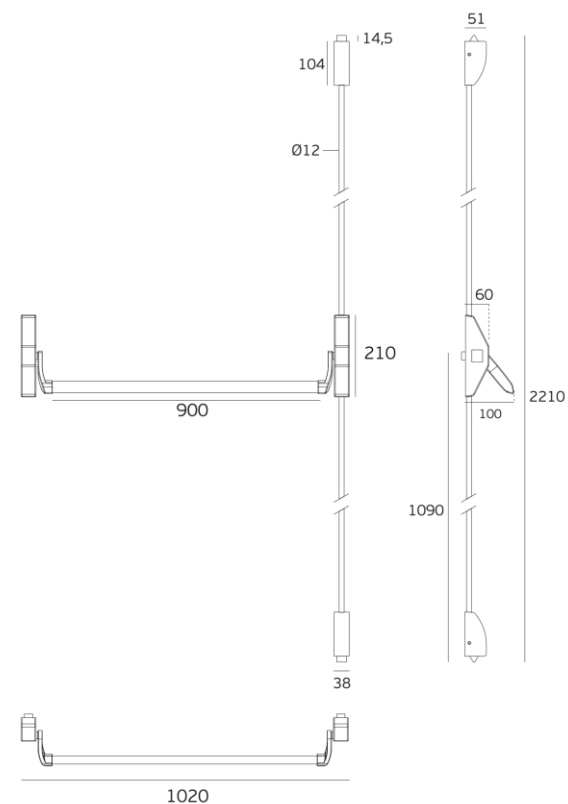




BDE-1.20. 954.KIT

ANTIPANIC DOOR LOCK

Reversible antipanic door lock for glass doors with closing system through top and bottom latch. Opening by key and lever handle from the outside. Lever handle with plate and cylinder included.

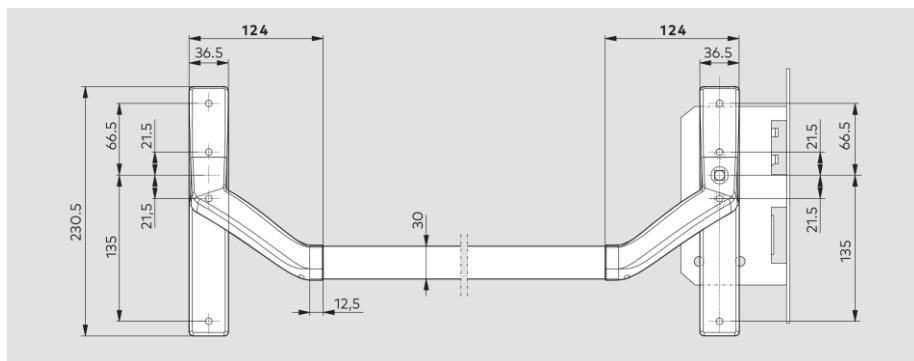


BDE-D2500

TOUCH BAR FITTINGS FOR TIMBER DOORS



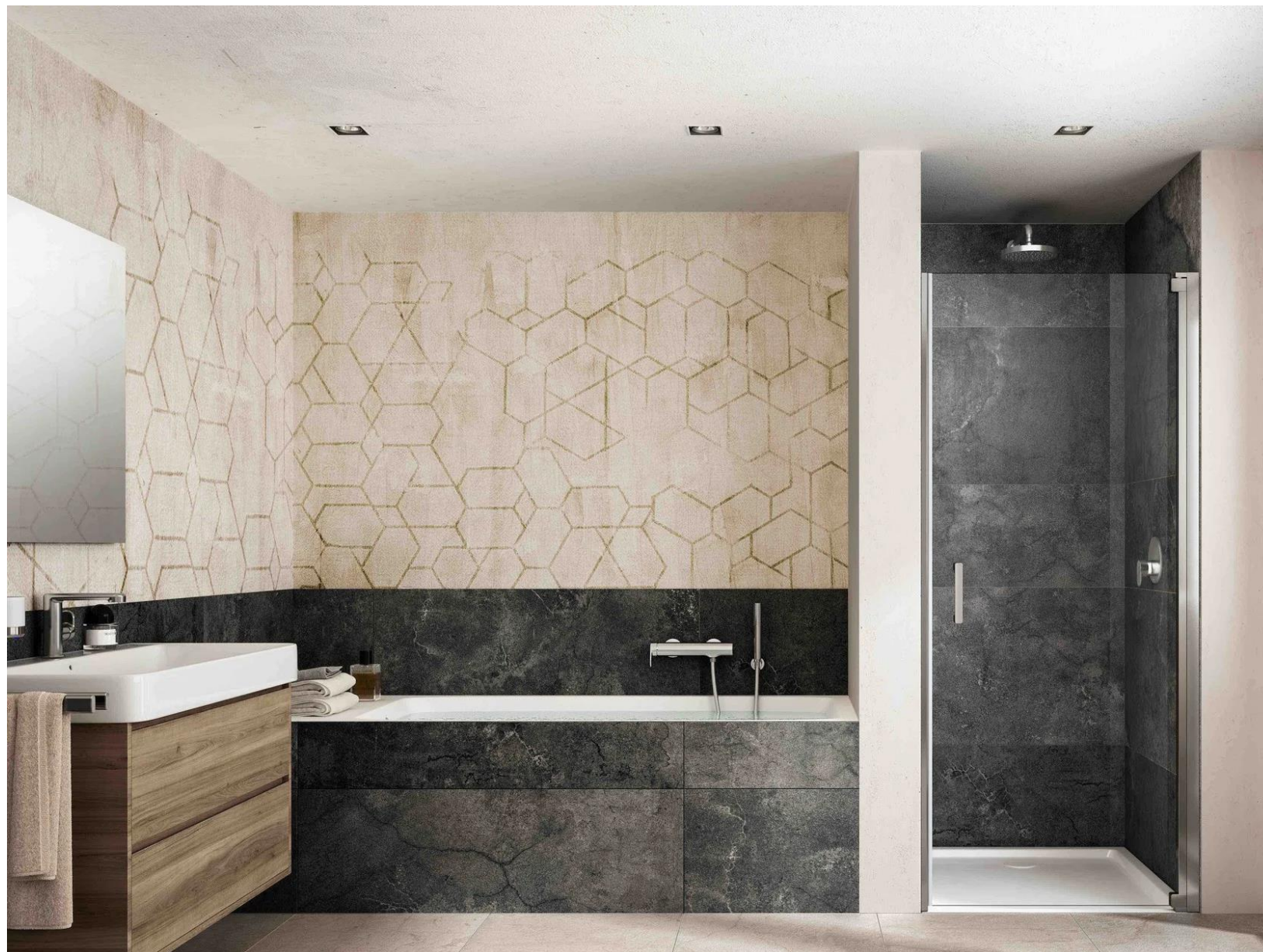
With its series **BDE-D2500** (touch bar), the **BLUE WEST** Premium project door furniture and corresponding complementary accessories, **BLUE WEST** is able to offer a high-performance panic hardware system ideal for both internal and external timber door applications. The integrated mortise panic/emergency escape lock enables the door to be engaged by both latch and bolt.





SHOWER CABINS















THANK YOU FOR YOUR ATTENTION

FOR MORE TECHNICAL INFORMATION CONTACT US



Neuer Wall 71 c/o WorkRepublic 20354
Hamburg - Germany
+49 (0) 40 9999 9442-9
www.bluewest.de
info@bluewest.de



Sale office

Maslak 1453, Ticari T4b blok -7kat Daire
153, Sariyer-Istanbul
+90 850 305 930
info@bluewestmiddleeast.com