

**Bluewest.de**  
info@Bluewest.de

**ADDRESS:**

Neuer Wall 71, c/o WorkRepublic  
20354 Hamburg  
Germany

**TEL & FAX:** +49 40 99 99 94 42 9



**BLUE WEST**  
GmbH

**BWS**

The trend-setting automatic sliding  
door system

Access Solutions Consulting  
& Sales Company

For impressive entrances  
For high quality solutions  
For many applications



## AUTOMATIC SLIDING DOORS – BWS



### BWS – Features

The BWS is the first automatic door system featuring interactive communication, simplified commissioning, intuitive control and greatly enhanced operational safety and reliability.

### Qualities

The BWS supplies the basis of our automatic door drives. It enables us to provide a wide range of models for the market, all of which are based on this system and use the same components, modified to suit the needs of the individual customer. The result is quicker assembly and lower service and maintenance costs. The BW BWS fulfils 2006 / 42 / EG industrial guidelines for machines, DIN18650 as well as meeting all relevant national and international norms and standards.



## Entrance Systems

### Standard Applications

The BWS covers practically the entire range of applications: single and twin leaf standard sliding doors, elegant two and four leaf telescopic sliding doors, even graceful curved and round sliding doors, Blue West's original angled sliding doors, as well as space saving folding doors: all these are based on the BWS.

### Special Applications

For special applications there is an abundance of models available. The BWS range of products is also available for escape routes or specially equipped for specific applications.

### Your Benefits

The BWS is the very latest generation in automatic door systems. In addition to the qualities for which Blue West has become legendary, i.e. exceptionally low-noise operation and typical Swiss quality, the innovative features of the BWS make it the market leader from the technological point of view.



## BWS – Qualities

The BWS enables the construction of a vast range of door models. Designed using modular construction principles, it can be adapted to suit the widest range of conditions and yet is largely based on the same components. This shortens installation time and reduces service and maintenance costs.

## Mechanics

The absence of noise is the most striking feature of Blue West automatic doors. Our combination of short, low-momentum toothed belts, rollers made from hard-wearing, low-noise plastic, acoustically decoupled running tracks, guide pulley wheels with ball bearings and door leaf guides with specially developed guide profiles all contribute to an exceptionally quiet running door.

## Electronics

The BWS components can communicate with one another interactively, which, among other things, enhances safety and security. The ability of drive, sensors and remote to communicate enables continuous monitoring of component status. The operational status of the door system and its individual electronic components also continuously undergo plausibility checks. Thanks to its learning capacity, the potential of the unit to malfunction is reduced to a minimum. Doors can be operated using a remote control featuring a graphic display with background lighting, and easy-to-use, menu-led navigation with text in the language of your choice; if required, an additional key operated switch is available.



## Design

For the BWS, there are 20 mm thick aluminium profiles available for 10 mm thick single glazed leaves, or 32 mm thick profiles suitable for 24 mm thick insulating glass to allow the greatest possible transparency. Even profiles of other manufacturers up to 65 mm can be fitted. Both profiles and drive unit cover can be anodized or powder-coated. Drive unit heights for both the normal, DUO and RED versions are available in either 108 mm or 150 mm; 200 mm for the BWS 30 reinforced models. The drive unit can be fitted to the lintel, freestanding or integrated in the ceiling.

|                         | Linear standard-sliding door  |   | Linear telescopic sliding door   |   |
|-------------------------|---|---|--|---|
|                         |  |  |  |  |
| Door type               | BWS 20/30   | BWS 20/30   | BWT 20/30  | BWT 20/30   |
| Opening width           | 800 – 3 000 mm  | 800 – 3 000 mm  | 800 – 3 000 mm   | 1 200 – 4 000 mm  |
| Clear height of passage | 3 000 mm  | 3 000 mm  | 3 000 mm   | 3 000 mm  |
| Max. door leaf weight   | 1 x 150 kg  | 2 x 120 kg  | 2 x 90 kg  | 4 x 80 kg   |
| DUO/RED model           | 1 x 150 kg  | 2 x 150 kg  | 2 x 120 kg   | 4 x 90 kg   |
| Reinforced (20-200/22)  | 1 x 200 / 1 x 250 kg  | 2 x 150 / 2 x 200 kg  | 2 x 130 / 2 x 170 kg   | 4 x 90 / 4 x 130 kg   |
| Recommended application | single leaf door automation for tight spaces  | for most normal applications  | for maximum width of passage in tight spaces   | for elegant entrances and generous width of passage                                   |



## Entrance Systems

### BWS – Standard Applications

The BWS provides the right product for every application. Whether you require one of our highly versatile sliding doors, standard or telescopic, curved or angled, or one of our space-saving folding doors that fits into the tightest of spaces, BWS can deliver all of this and more.

#### Linear Sliding Door

Single or two leaf standard sliding doors can typically be seen wherever automatic sliding doors are required. Standard sliding doors have an opening width of 800 to 3000 mm, and the strongest model takes door leaf weights of up to 2 x 200 kg. Equally attractive and reliable, but more impressive in construction and range of motion, are our two or four leaf telescopic sliding doors. Thanks to their narrower door leaves, they require about 30 % less space compared to standard sliding doors, and can cover particularly large opening widths of up to 4000 mm.

#### Radial Sliding Door

Radial sliding doors are ideally suited to lending any façade a real touch of style. They provide the unsurpassed elegance of a revolving door, but are less complex and far more flexible with regard to looks. This type of door can be integrated into virtually any curved space, and be curved inwards or outwards.



#### Angled Sliding Door

This is a highly original design, eye-catching and unusual. Angles are available between  $\geq 90^\circ$  up to  $< 180^\circ$  and can open inwards or outwards.

#### Folding Door

Folding doors are necessary when the full width of entrance has, if possible, to be used. They are simple to retrofit, and integrate well into existing entrances. Typical applications for the BWF can be found in gastronomy, in the passage to the pantry, for example, or from the kitchen to the dining area, but a recent trend is to use the door to implement no smoking laws by separating non smokers from newly set up "smoking lounges".

|   | Radial sliding door   | Angled sliding door  | Folding door  |
|---|---|--|---|
|  |  |  |  |
| Door type   | One or two leaves   | Two leaves   | Two or four leaves  |
| Opening width   | 800 – 3000mm  | 800 – 3000mm   | 800 – 2000mm  |
| Clear height of passage*  | 3000mm  | 3000mm   | 2500mm  |
| Door leaf weight max.   | 1 x 200 or 2 x 100kg  | 2 x 120kg  | 2 x 37.5 or 4 x 37.5  |
| as DUO / RED model  | 1 x 250 or 2 x 200kg  | 2 x 200kg  | –   |
| Recommended application   | for elegant entrance solutions  | for impressive entrances   | for tight spaces and simple retro-fitting   |

## BWS – Non-Standard Applications

The BWS products are also available for use as escape doors or specially equipped for unusual applications.

### Door systems for Escape

#### Routes

The redundant model (RED) consists of two drive units, two independent controls and a rechargeable battery to ensure emergency operation in power failures. The drive with battery monitoring (BAT) is officially permitted in Britain and Denmark as an escape door system. Also available for the French market is the CO48 opening system with mechanical power storage.

Our standard sliding doors and folding doors can also be ordered equipped with the Total Opening System (BWB). The door leaves can be swung open in the direction of escape, enabling the largest possible width of passage. Doors with swing-out side screens can also be integrated into the BWB system (standard with escape door systems).

### Other Solutions

We can also provide you with suitable applications in addition to BWS. Whether you require a Blue West drive unit for swing doors, on way access systems or representative revolving doors, your Blue West partner can provide you with all the necessary information, including competent advice and service. Please ask for our detailed brochure.

### Special Applications

The Blue West CLEAN series of automatic door models are used when there are requirements for hermetic seals with clearly defined properties. It is often the case in the medical field, for instance in operating theatres, that our doors support the maintenance of a sterile environment by their hermetic closing and easy-to-clean qualities. These tightly closing sliding doors are available as single or twin leaf models.

The German Institute IFT Rosenheim has certified the Blue West SAFECORD RC 2, our burglar resistant sliding door, to resistance class RC 2, i.e. providing effective but unobtrusive protection against intruders. In addition to multi-point locking, reinforced running gear and continuous floor guides, this model also features special laminated safety glass and a framework reinforced with steel plates.

|                         | Escape route systems  |  |   |
|-------------------------|---|--|---|
|                         |  |  |  |
| Door type               | RED   | BAT (UK, DK) / CO48 (F)  | TOS   |
| Standard sliding door   | ●   | ●  | ●   |
| Telescopic sliding door | ●   | ●  |   |
| Radial sliding door     | ●   | ●  |   |
| Angled sliding door     | ●   | ●  |   |
| record SAFECORD RC 2    | ●   |  |   |
| Folding door            |   |  | ●   |

## Options and Equipment

### BWS:

- Standard sliding door, single or twin leaves.
- Telescopic sliding door, two or four leaves.
- Round or curved sliding door.
- Angled sliding door.
- Folding door.
- Specific sliding door solutions.

### Escape door systems:

- Redundant (RED)
- Electrical power storage device BAT (UK / DK)
- Mechanical power storage device CO 48 (F)
- Total opening system (BWB)

### Maximum Door Leaf Weight:

- Standard sliding doors [DUO / RED]: BWS 20 1 x 150 kg [1 x 150 kg], BWS 20 2 x 120 kg [2 x 150 kg]
- Telescopic sliding doors [DUO / RED]: BWT 2 x 90 kg [2 x 120 kg], BWT 4 x 80 kg [4 x 90 kg]
- Reinforced models BWS : BWS 30 1 x 200 kg [1 x 250 kg], BWS 30 2 x 150 kg, [2 x 200 kg], BWT 30 2 x 130 kg [2 x 170 kg], BWT 30 4 x 90 kg [4 x 130 kg]

### Profile Systems for Door Leaves, overhead lights and side panels:

- Aluminium 20 mm for 10 mm single glazing.
- Aluminium 32 mm for 24 mm insulating glass.
- Other brands of profile up to 65 mm.

### Surface Finishes and Treatments:

- In any RAL finish, powder-coated.
- Clear or special anodized finish.

### Control Unit (STM):

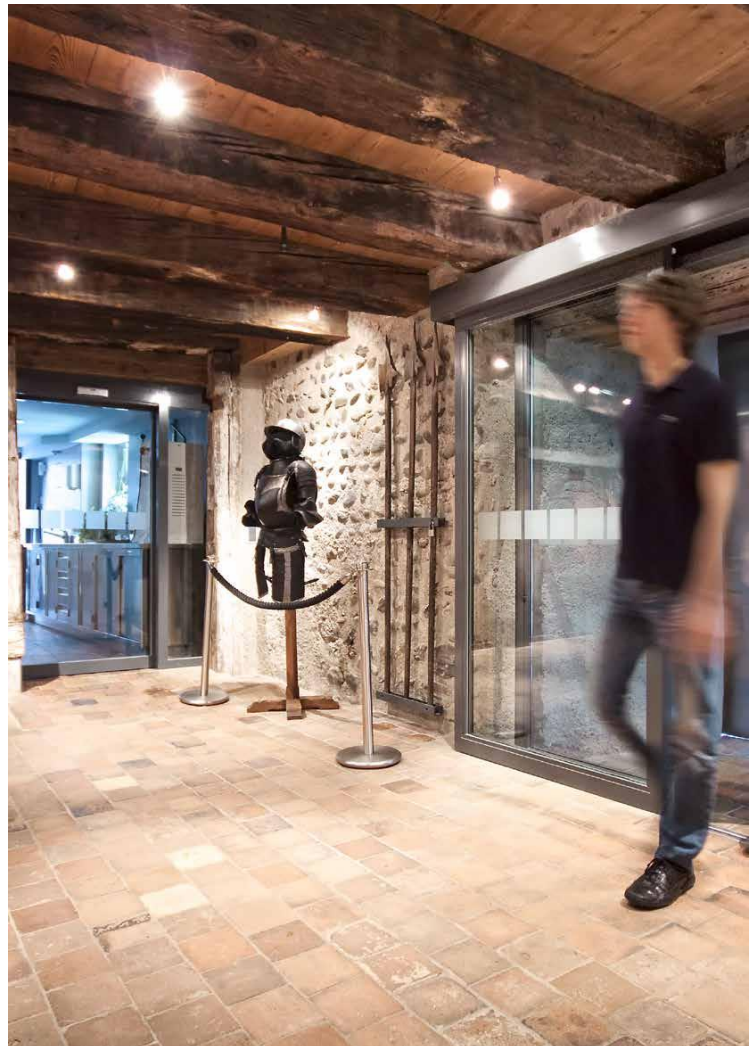
- Self-learning, 32-bit microprocessor control.
- Controllable, adjustable door leaf motion sequence.
- Low power consumption despite very high-performance drive unit.

### Drive Covers:

- Drive unit height 108 mm and 150 mm.
- 200 mm drive unit height for reinforced models BWS30.
- Hinged, foldable drive unit cover and / or in several parts.

### Burglar Protection Options:

- SAFECORD RC 2 burglar-resistant sliding door (tested and approved by RC 2).
- Multipoint locking (MPV).
- Floor rails (stainless).
- Safety rails.
- Floor locks (mechanical).





## Options and Equipment

### Special Options:

- Optical locking display (OVA).
- Use- dependent opening width (TOWA).
- Bell contact.
- Monitoring of locking.
- Other options available in line with customer's wishes.

### Fire Protection System:

- Several country-specific systems in accordance with E 30, EI 30.

### Trigger Devices, Safety and Security Sensors:

- BW RAD 290 (Radar motion sensor)
- BW AIR 290 (Active infrared motion sensor / monitoring of persons)
- BW RIC 290 (combined sensor)
- Proximity switch (Infrared)

### Buttons and Switches:

- Wireless trigger device EASY open.
- Remote Control Device for RADAR.
- Passive infrared sensors (PIR).

### Key-operated contact (SSK):

- Built-on or remote controlled.

### Manual Unlocking:

- HEI (indoors)
- HEA (outdoors)

### Rechargeable batteries for emergency operation:

- Available in a range of capacities.

### Locking:

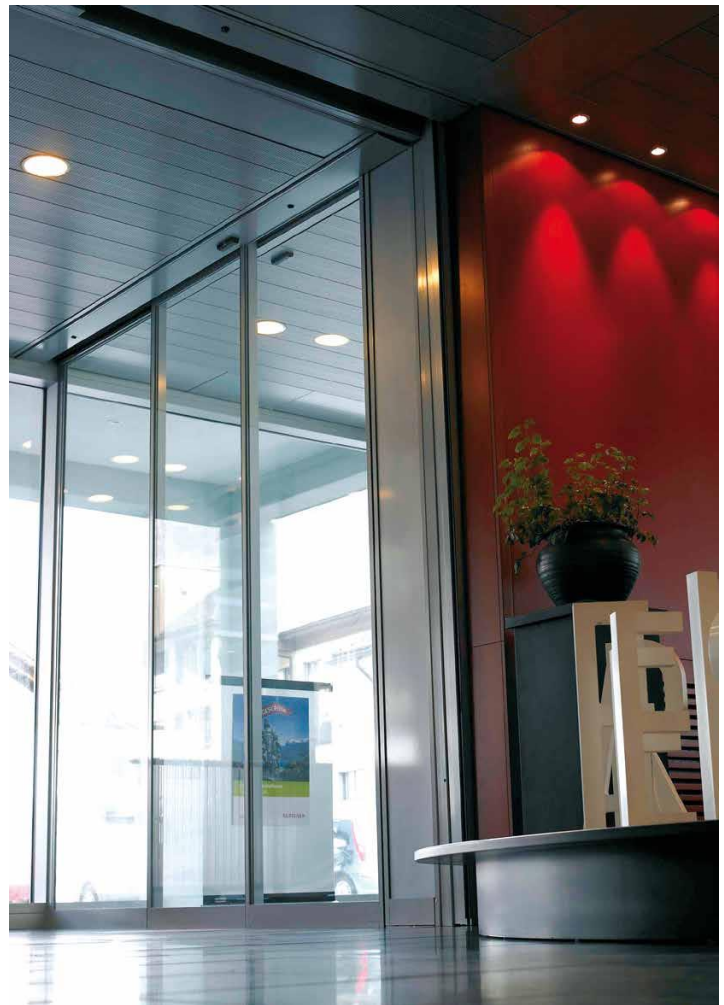
- Motorized bolt- operated locking (VRR 20)
- Magnetic locking (VRR 16)
- Multipoint locking (MPV)
- Magnetic catch

### Protective screens:

- Elegant protection against trapping.

### Remote Control Devices:

- BDE- D (display with background lighting).
- Available in narrow fitting or square for standard built-in frames.
- Equipped with key- operated lock if required.





Thank you for your attention